

Crystal Nails[®]

2025 FALL / WINTER



2025 FALL / WINTER TREND COLORS

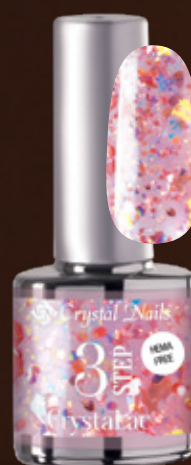
PEACHES OF AUTUMN

Damson

Mulberry is a deep, velvety plum-purple shade that exudes a sense of unique elegance and character. Autumn Punch / Damson is both classic and modern at the same time: its depth gives it a subtle dramatic flair without being too bold, making it the perfect choice for those who love a feminine and harmonious effect. This shade looks stunning on its own, but when paired with gold or nude, it creates a luxurious feel. Combined with black, it gives a truly powerful and confident appearance.



New! 3S249
Autumn punch/
Damson



New! 3SD4
Hawthorn
Glitter



New!
Mulberry

GREENS OF AUTUMN

Fanfare

Pine is a truly special deep green shade that strikes the perfect balance between emerald and darker moss tones. It is both refreshing and soothing, while also carrying a sense of mystery and confidence. Green Reverie / Fanfare is especially well-suited for the autumn-winter season — it not only radiates self-assurance but also conveys a calm strength and inner harmony. It pairs beautifully with gold, bronze, or champagne for an elegant, festive appearance, but also looks stunning with black or white for a modern, minimalist effect.



New! 3S248
Green reverie/
Fanfare



New! 3SD2
Sparkling Mint



New!
Pine



Nails by: Ágnes Sebestyén
Photographer: Vivien Borzi
Model: Olívia Csupor

The nail set was made with Xtreme Pudding+ in the Cover Blush shade, 3S249 3 STEP CrystaLac, and red, black, and white Art Gel Pro painting gels.

NEW SHADE!

XTREME PUDDING+ COVER BLUSH

Free from Di-HEMA and HEMA ingredients

Discover the newest member of the Xtreme Pudding+ family – the elegant Cover Blush shade! This medium-density builder gel has a soft, pudding-like texture and is self-leveling, which makes application quick and easy – even in colder months. Its soft, rosy cover shade gives a natural look while providing excellent coverage and sculptability. It is suitable for nail building, refills, and even no-file techniques, making it an ideal companion for both salon work and competition-level designs. It naturally forms the desired curve, making the final result not only aesthetically pleasing but also time-saving. The new luxury rose gold-silver jar is not only elegant but also practical – a worthy addition to the latest trends.

We recommend using a larger, softer brush such as the Nero Merlo III or the Xtreme Gel brush.

Curing time: 2-3 min in UV, 1-2 mi in LED.

Bending time: 20-25 sec in UV, 8-10 sec in LED.

5ml

15ml

50ml



Nail: Emerald Enchantment

The nail set was made with 1: NEW! Xtreme Pudding+ Builder Gel Cover Blush, 2: NEW! 3STEP CrystaLac 35248 – Smoky Mint, and 3: 3SD2 – Sparkling Mint shades, as well as 4: Nova Crystals rhinestones. (by Edina Sikari).

2025 FALL / WINTER

 Crystal Nails®



NEW SHADE! XTREME PUDDING+ COVER BLUSH

 SBS here:



 Video here:





NEW!
COVER REFILL HARD XTREME PINK



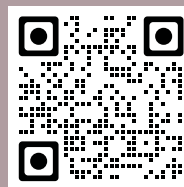
NEW SHADE!

COVER REFILL HARD XTREME PINK

EXCLUSIVE PREMIERE:

First at the Beauty Expo, on September 28.

*Scan the QR **code** to learn more about the event!*



The newest member of the Refill family has arrived – a truly unique innovation. Crystal Nails' popular Refill Hard builder gel line is expanding with a brand-new shade and an improved formula: introducing Xtreme Pink. This shade enhances salon nail creations both aesthetically and technically. The new formula is thick yet easy to shape – it doesn't run, making it ideal for both beginner and experienced nail technicians. Its significantly reduced heat generation ensures greater comfort for clients during curing. Compared to previous versions, the slightly harder material provides even more stability and long-lasting results.

As before, using a base gel is recommended as a base layer, especially for refills (e.g., Compact Base Gel). Xtreme Pink features an intense yet elegant pink shade – it offers perfect coverage with a natural look. It provides just the right amount of opacity, making it suitable for fast salon work and the popular baby boomer technique.

Curing time: 2-3 min in UV, 1-2 mi in LED.

5ml

15ml

50ml



Nail: Indigo Magic

The nail set was made with NEW! Cover Refill Hard Xtreme Pink builder gel, the NEW! Royal Top Gel RT39 – Indigo Kiss, and SENS Base&Builder in Aurora White. Created by Edina Sikari.

NEW COLORS!

COMPACT PRO BASE&BUILDER GEL

Free from Di-HEMA and HEMA ingredients

Discover the Compact Pro Base & Builder Gel, which provides even stronger adhesion for long-lasting, perfect nails. It has a slightly thicker density but is still easy to control with the brush, making every stroke precise and confident. Ideal for mediumlength nail extensions using forms, creating a stable C-curve, as well as perfect for base coating, nail strengthening, or securely attaching rhinestones.

Curing time: 2-3 min in UV, 1-2 min in LED, Soluble

This fall, natural-looking milky and cover shades are debuting:

Milky Rose: a pale pinkish-white with a milky effect, delicate and refined.

Milky Pink: a pastel, light pink that adds just a touch of color.

Baby Pink: classic baby pink, soft and natural-looking.

Cover Pink: a medium-toned pink, perfect as a nude base.

Cover Nude: a warmer, browner shade that matches the natural nail bed color.

8ml

13ml



*Free from
Di-HEMA and
HEMA
ingredients*

Nail: Starlit Elegance

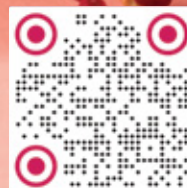
The nail set was made with the NEW! Compact Pro Base Gel - Cover Pink, the NEW! 3STEP Diva CrystaLac 3SD3 - Peach Glaze, and Art Gel Pro in white, red, and blue shades, adorned with NEW! Nova Crystals rhinestones. (by Dóri Kesztyűs).

NEW COLORS!

COMPACT PRO BASE&BUILDER GEL



 Video here:



NEW COLORS!

3 STEP CRYSTALAC TREND COLORS

 Video here:



NEW COLORS!

3 STEP CRYSTALAC TREND COLORS

Free from Di-HEMA and HEMA ingredients

This autumn's colors come back fresh, modern, and feminine. Discover the newest 3 STEP collection, which fits perfectly between cool mornings and sunny afternoons. 3S247 – an elegant, clean, and modern light gray. 3S248 – a fresh but soft smoky mint tone. 3S249 – a romantic and feminine powdery mauve pink, a forever favorite for a soft and balanced look. 3S250 – a bright pink shade that is perfect for Indian summer.

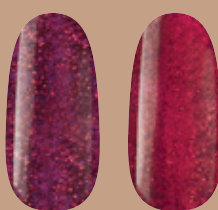
4ml
8ml

Free from Di-HEMA
and HEMA ingredients

NEW
COLORS!



New! 3S247 Gray Dew
New! 3S248 Green reverie/ Fanfare
New! 3S249 Autumn punch/ Damson
New! 3S250 Indian Summer

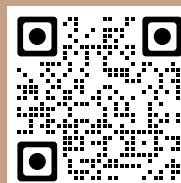


New! Burgundy Sunset
New! Fall in Fire

Exclusive Premiere:

The two shimmering shades will debut first at the Beauty Expo on September 28.

Scan the QR code to learn more about the event!



NEW! LIMITED!

Blush&Breeze

3 STEP CrystaLac Collection

The perfect blend of soft elegance and refreshing vibes. This autumn, the Blush & Breeze Collection brings you pastel-toned, harmonious shades — all packed in a box that transforms into a display.

4x4ml



Contents:

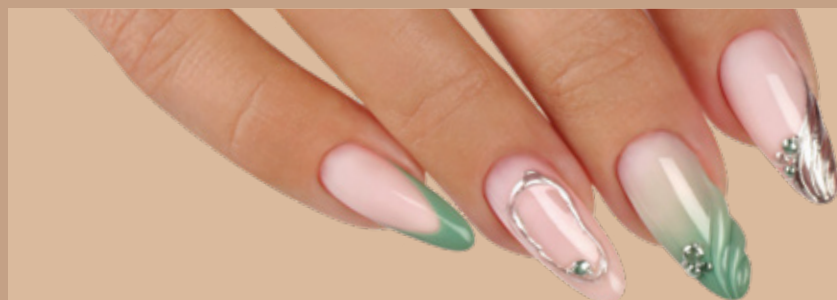
NEW! 3S247 Grey Dew
NEW! 3S248 Smoky Mint
NEW! 3S249 Powdery Mauve
NEW! 3S250 Indian Summer

NEW! LIMITED!



Nail: Silver Mint

The nail set was made with 1: Millennial Builder Gel – Mily Rose, the 2: NEW! 3STEP CrystaLac 3S248 – Green Reverie / Fanfare shade, and 3: ChroMirror Silver chrome powder. b(y Edina Sikari).



BRAND NEW!

3 STEP CRYSTALAC DIVA

Free from Di-HEMA and HEMA ingredients

The latest collection from Crystal Nails has arrived: Diva. With the cooler autumn season approaching, shiny, flaky, magical shades come back into focus, and this collection brings exactly that to you. Stunning flaky sparkle, glossy shine, and iridescent magic—each shade embodies stylish elegance that will keep your clients coming back again and again! 3SD1 Ice Veil – A clear, icy translucent base with white flakes, perfect if you desire a frosty, elegant look. 3SD2 Sparkling Mint – A fresh mint green shade with pink-gold flakes. Refreshing and unique. 3SD3 Peach Glaze – Shimmering opalescent flakes on a pink translucent base, creating a romantic and charming effect with a little extra sparkle. 3SD4 Hawthorn Glitter – Warm mauve-pink tones with intense, light-reflecting flakes.

Curing time: 2-3 min in UV, 1-2 min in LED.

4ml
8ml

Free from
Di-HEMA and
HEMA ingredients



New! 3SD1
Ice Veil



New! 3SD2
Sparkling Mint



New! 3SD3
Peach Glaze



New! 3SD4
Hawthorn
Glitter



NEW! LIMITED! Diva

3 Step CrystaLac Collection

The autumn-winter 3 STEP CrystaLac shades are now available as a set, so you can get all four dazzling colors at once – at a better price, in one package! A perfect choice if you don't want to miss out on all the season's trendy colors. The box can be converted into a display.

4x4ml



Contents:

New! 3SD1 Ice Veil
New! 3SD2 Sparkling Mint
New! 3SD3 Peach Glaze
New! 3SD4 Hawthorn Glitter

NEW! LIMITED!




Nail: Glitter Line

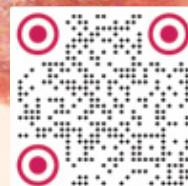
The nail set was made with Liquid Fusion – Liquid Polygel in Clear and Cool Nude, Art Gel Pro White, and the NEW! 3STEP Diva CrystaLac 3SD3 – Peach Glaze shade.
(by Virág Halász).

BRAND NEW!

3 STEP CRYSTALAC DIVA



 Video here:



NEW PACKAGING!

2 STEP SMARTGUMMY RUBBER BASE GEL IN A JAR

Video here:



NEW SHADE!

ELASTY HARDENER MILKY WHITE

Video here:



NEW SHADE!

ELASTY HARDENER MILKY WHITE

Flexible, soluble brush-on hardener and liquid builder gel with outstanding adhesion

Introducing the new Milky White shade in the Elasty Hardener family! This milky white color fits perfectly with the clean, simple trends of autumn and winter. This flexible, soluble brush-on base gel offers excellent adhesion, making it ideal for everyday salon work. Suitable for strengthening as well as extending nails in sizes S and M. CN tip: Use it to fix metal decorations, microbeads, rhinestones, and stones on the nail surface. It also works well for adding nail art decorations. For decorations that are less durable, apply a thin layer under the top gel (great for chrome powders, watercolor painting, and water decals).

Curing time: 2-3 min in UV, 1-2 min in LED.

8ml
13ml



New!
Milky
White

NEW PACKAGING!

2 STEP SmartGummy Rubber Base Gel - in a jar

Smart – because it's clever: it self-levels beautifully and blends into the surface on its own.

Gummy – because it's flexible and elastic, with a "rubber-like" feel.

Rubber Base – because it's perfect for base layering, filling in the natural nail, and forming a C-curve. However, it's not recommended for building long extensions on forms – for that, use one of our brush-on builder gels from the Compact line, the Elasty Hardener Gel, or the SENS Base&Builder range.

This is a new, innovative-textured Base Gel that stands out for its extremely easy application, high flexibility, and strong adhesion. Creating a smooth surface is effortless – the material gently settles with minimal help, and surface irregularities quickly disappear. It holds the desired shape well and doesn't run easily toward the cuticles, making it ideal for those who prefer working with medium-soft viscosity materials. It allows for a fast work pace with minimal correction needed. Its flexibility makes it unique among Base Gels – it adapts to the natural movements of the nail, making it highly resistant to mechanical impacts. Adhesion is outstanding, ranking at the top among all Base Gels.

Curing time: 2-3 minutes in UV, 1-2 minutes in LED (depending on lamp strength). After curing, it remains tacky. For best results, use Cool Top Gel as a top coat. When used alone, we recommend it for mini-length nails (up to fingertip length).

30ml

CN Tip: We recommend applying a clear bond layer under tinted base gels – this helps protect the natural nail, especially during product removal or replacement. Apply a thin base layer of the tinted base gel over the cured clear bond layer, then build the C-curve using the same tinted base gel to shape the nail as desired.



By popular demand, the three bestselling shades (Nr01 – Baby Pink, Nr02 – Milky White, Nr14 – Milky Rose) are now available in a new, economical jar packaging!

NEW
PACKAGING!

Free from
Di-HEMA and
HEMA
ingredients



New! Nr01
Baby Pink



New! Nr02
Milky White



New! Nr14
Milky Rose

RETURNED!

ART GEL PRO

White, Black, Blue, Yellow, Red

A creamy, fine-textured, highly pigmented decoration gel that makes painting even easier!

The classic Art Gel Pro has arrived in an upgraded version — creamier, more pigmented, and easier to handle! The super-pigmented, non-cleansing formula provides full coverage even in a thin layer, remains shiny after curing, and does not require extra top coat. It gives an immediate glossy and vivid color after curing without fixation. The shades can be mixed to create any custom color.

Its creamy, thick consistency prevents it from spreading, making it ideal for contours, thin lines, geometric and abstract patterns, or even detailed hand paintings with stencils. Colors blend easily — perfect for the one-move technique as well

Tip for use: Try using a size 0 or Art brush for maximum precision; the brush glides almost by itself on the surface, lines do not break, perfect for detailed patterns.

CN Tip: Use it extra thinly so the material cures through — only a minimal amount on the brush is enough! Use Art Gel decoration gel exclusively for decorations! For full coverage and free edge work, Royal Gel gels are best. With a sponge-head ombre brush, perfect color gradients can be created with Art Gel decoration gels! Cure in LED lamp for faster work!

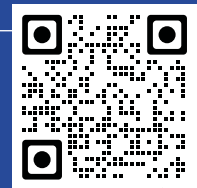
Curing time: 3-4 min in a UV lamp, 2-3 min in a LED lamp.

5ml



Exclusive Premiere:

The two shimmering shades will debut first at the Beauty Expo on September 28.



Scan the QR code to learn more about the event!

Nail: Autumn Flowers

The nail set was made with the NEW! 3STEP CrystaLac 3S249 - Powdery Mauve and 3S250 - Indian Summer shades, along with Art Gel Pro painting gels. (by Dóra Kesztyűs).



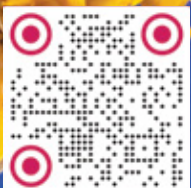
RENEWED!

Free from
Di-HEMA and
HEMA
ingredients

RETURNED!

ART GEL PRO

 Video here:




NEW COLORS!

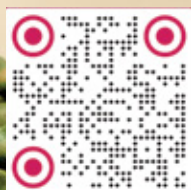
TIGER EYE LUX CRYSTALAC



*Tiger
Eye*



 Video here:



NEW COLORS!

TIGER EYE LUX CRYSTALAC

Free from Di-HEMA and HEMA ingredients

An autumn magic dipped in gold. The shades of the Tiger Eye Lux collection are deep, magnetic gel polishes that shimmer amazingly in the light with every movement. Inspired by nature, the elegant tones perfectly complement the autumn-winter mood:

Maple – A golden, caramel brown shade that enchants anyone with its warm glow and subtle elegance.

Mulberry – A deep, burgundy-purple tone with sparkle, a true special that creates a gently dramatic effect.

Pine – A dark pine green color with silvery light play; a natureinspired yet unique choice.

Spice – A rusty, warm orange-brown shade that brings the atmosphere of autumn forests, adding warmth to every manicure.

Let the harmony of light and nature shine in every brushstroke.

CN tip: use any of our magnets (double-sided, multiform, or Xtreme Force) with it!

Curing time: 2-3 min in UV, 1-2 min in LED (depending on lamp strength)

4ml

Free from
Di-HEMA and
HEMA
ingredients



NEW
COLORS!



New!
Maple



New!
Mulberry



New!
Pine



New!
Spice



Tiger Eye

Nail: Autumn Magic

The nailset was made with the NEW! Compact Pro Base Gel – Cover Pink, NEW! Tiger Eye Lux Crystalac – Mulberry, as well as SENS AcrylGel Clear and Xtreme Superior Gel Clear. Created by Dóri Kesztyűs.

NEW COLORS!

ROYAL TOP GEL

Color and top shine in one – for artificial nails or over a base gel layer

The latest shades of Royal Top Gel designed for the autumn-winter season have arrived! Four stunning new colors that capture the mood of the season: from the passion of scarlet red to deep mauve and chocolate tones, everything you'll love about autumn is here. First is RT37 Scarlet Red, a flaming scarlet, a reimagined classic red. A powerful, striking shade that will definitely make you stand out. RT38 Pumpkin is a bright, warm orange tone, a favorite of the pumpkin season. Cheerful, energetic, and eye-catching. RT39 Indigo Kiss is an indigo purple with a special grey depth. Elegant, modern, and distinctive, perfect for both subtle and bold styles. RT40 Mocha Velvet is a chocolate pudding shade of brown, with a clean, natural look that complements nude nails beautifully. Royal Top Gel is a creamy, easy-to-apply, perfectly spreading formula, a softer, glassier version of the Royal Gels, making it a new favorite for salon nail professionals as it speeds up work and makes applying colors a joy. One layer is enough for full coverage! Non-cleansing, non-soluble, colored gel in a bottle. Curing time: 2-3 min in UV, 1-2 min in LED (depending on lamp strength)

4ml



New! RT37
Scarlet Red



New! RT38
Pumpkin



New! RT39
Indigo Kiss



New! RT40
Mocha Velvet



CN tip:

You can enhance its shine by using a top gel. Can be used over almost any base, with gel polish only on base gels used for reinforcing technique.

CN tip:

If it settles or separates during storage, do not shake due to thickness, stir with a decorating stick inside the bottle.

Nail: Spiced Orange

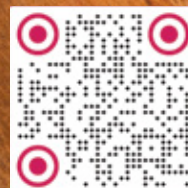
The nail set was made with SENS AcrylGel Clear, the NEW! Royal Top Gel shades: RT38 – Pumpkin, RT37 – Scarlet Red, and RT39 – Indigo Kiss, as well as NEW! Nova Crystal rhinestones. Created by Mona Majnik.

NEW COLORS!

ROYAL TOP GEL



 Video here:



RENEWED!

GLASSY TOP GEL

GLASS-LIKE SHINE TOP GEL

AVAILABLE FROM OCTOBER!

Colored but fully transparent, non-cleansing, soak-off top gels that allow you to change the color of the nail with a thin layer. Since they do not dull the sparkling effect but only tint it, they look beautiful over any glittery surface. Can be used to modify the look of glitter gel polishes, Tiger Eye Infinity Crystalac shades, transfer foils, platinum foils, chrome powders, and Glam or Diva Glitters. Also excellent for various nail art techniques. Curing time: 3-4 min in a UV lamp, 2-3 min in a LED lamp.

4ml



New!
Hot pink

New!
Red

New!
Orange



CN tip:

To achieve a nice, even color effect, Glassy Top Gel must be applied in a smooth layer. That's why it is important that the surface underneath is already even, as using the colored top to level the surface is not recommended – it would result in patchy color.

Nail: Magnetic Glass Effect

The nail set was made with Sens Magnetic Flash Rose and Glassy Hot Pink Top Gel. (by Virág Halász).

NEW! SCENT PAIRS

NAIL CARE OILS AND HAND, FOOT AND BODY LOTIONS

Two returning favorites are available again, plus a brand-new scent inspired by autumn has arrived!

Our cuticle oils deeply nourish and regenerate the nail bed, while our lotions leave the skin silky soft and fragrant without a greasy feeling.

Opium

A blend of dark flowers, smoky notes, and oriental spices that transports you to the mysterious world of the night. Passionate, powerful, and intriguingly elegant – for those who love impactful, memorable scents.

Oil 4 ml
Cream 30 ml
Cream 250 ml



Pumpkin Pie

A creamy pumpkin, warm cinnamon, and soft vanilla magical harmony. This scent wraps around you like a soft, warm blanket on cool autumn evenings. Perfect if you want a cozy, gently spiced yet feminine mood.

Oil 4 ml
Cream 30 ml
Cream 250 ml



Bellissima

A sweet, floral, light scent that brings a smile to your face. The essence of femininity, positive energy, and happiness all in one bottle. Fresh, refined, irresistible.

Oil 4 ml
Cream 30 ml
Cream 250 ml



NEW! NOVA CRYSTALS RHINESTONES

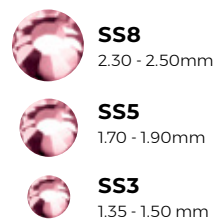
Iridescent, adhesive glass rhinestones for decorative nail designs. Their unique shades bring stunning light and elegance to every manicure. In addition to the popular colors among nail artists, new shades have arrived.

Light Purple – A delicate, light purple rhinestone that highlights the manicure with a soft, elegant sparkle. Perfect for romantic, pastel, or nude bases when you want a subtle feminine effect.

Lotus Purple – An intense, deep purple crystal with a special shine reminiscent of flower petals. A bold, eye-catching choice for darker tones or more extreme nail designs.

Available sizes: SS3, SS5, SS8

Packaging: 100 pcs/jar



CN Tip: For continuous patterns (where many rhinestones touch), surround with a Top gel using a 0 Short brush for an even more durable finish!

NOVA



New! Light Purple



New! Lotus Purple

NEW!

NEW! SENS PINK REVERSE TIP

The new generation of reverse tips has arrived! The SENS Reverse Pink Tip French Edge is an upgraded version of the classic reverse shape, featuring a deepened nail bed area for even more precise fit and a perfect French smile line. The result? A beautiful, natural C-curve, a modern and slim shape, and a professional finish every time. If you already loved our reverse tips, you'll fall in love with this one: new shape, new possibilities – same trusted SENS quality!

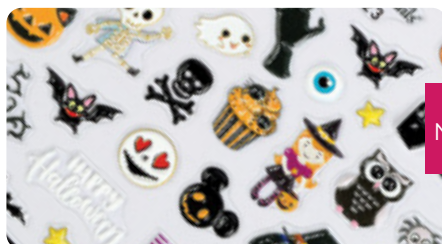
15 sizes – 150 pcs/box – for every hand shape and every technique.



NEW!

NEW! NAIL STICKERS

Get ready for the autumn season and Halloween in style with three nail sticker designs, each with a different vibe for the season! All three products are excellent choices for quick and striking nail decoration, so every client can find a design that best suits their personality. The CN-23 features cheerful, charming patterns on 3D stickers that perfectly capture autumn playfulness. The CN-24 offers nature-inspired, warm-toned leaf motifs for those who appreciate the refined beauty of fall. Creepy Chic presents elegant gold horror elements on water decals, providing a sophisticated yet impactful look for the Halloween season.



NEW!

CN-23



CN-24



NEW!

Creepy Chic

NEW!

2026 CALENDAR COVERS

*Weekly layout, 2026 nail tech planners
in two stunning designs*

Discover our 2026 calendars featuring two gorgeous cover options: a romantic pink marble pattern and a dazzling butterfly holographic design! Both versions perfectly embody femininity and uniqueness – made for those who not only want to stay organized, but also express their style every day. The planners are covered in soft, faux leather that's pleasant to the touch, with a snap closure and a builtin pen holder for extra practicality. Inner pockets are perfect for storing business cards, appointment cards, or other small essentials. Thanks to their compact size (117 mm × 185 mm), they easily fit into most handbags – so you can jot down your clients' next appointments anytime, anywhere!



NEW! CN & SENS SCISSOR HOLDER CASE

Discover the Crystal Nails scissor holder case in two charming shades of pink, or choose the SENS by Crystal Nails version in the classic, elegant black – a practical and stylish solution for storing your scissors! Made from easy-to-clean faux leather, it helps protect your tools from scratches while adding a chic touch to your nail kit. Pick the color that suits you best and keep your tools organized – simply, yet tastefully!



2025

BEST OF

Crystal Nails®

This year, our product range has expanded again with exciting new materials and shades. Let's take a look at the top favorites from the spring and summer seasons!

Feel free to mix and match them with the new fall-winter releases as well!

BEST OF
Crystal Nails®

