



  
*Crystal Nails®*

GRAND  
OPENING  
SALES  
**LIMITED  
PRICES**

CrystalNails  
 quick  
 SPA essence soak off gels  
 perfect smile line mix ratio  
 100% client satisfaction  
 manicures  
 nail enhancement  
 nail tips  
 colors  
 no lifting  
 CrystalLac  
 SPA essence  
 pinch manic  
 manicures  
 100% client satisfaction  
 ratio  
 curve  
 nailbed extensio  
 time sav  
 European quality  
 colors  
 gel nai  
 soak  
 quick & easy shape  
 nail art  
 100% client satisfaction  
 forms  
 mix ratio  
 drills  
 pamper  
 perfect smile line

# The Crystal Nail Success Story

Since the early 1990's, Crystal Nails has been developing a high quality product line for the most ambitious nail technicians, giving them choices to gratify their never-ending creativity and to guide them toward becoming a top professional.

We are proud of the Crystal Nails competitors who won two World Championships and fourteen other trophies at the Nailympics London, and have received more than sixty-nine (69!) 1st place trophies, making them the overall World Nail Champions.

If you try Crystal Nails, you will certainly fall in love with them. How do we know? The seasonally-driven collections bring you the latest and newest products and put them straight onto the hands of your trendy clients.

Crystal Nails is a top product line in Europe, and the number of satisfied nail technicians using the product are growing. Our legendary yearly events in Budapest, in the heart of Europe, the "Nails' Day" and the "Nail Ship" are attracting and satisfying thousands of nail technicians.

Crystal Nails – the nail innovator



victories in the world

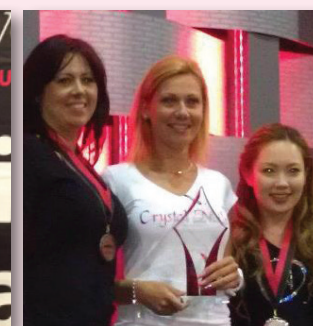
Name	Score	Placement
Erina Ogawa - Nailpro Cup Winner!	1158.25	1
Gabriella Kovacs	1139.75	2
Azumi Kanene	1110.75	3
Amy Becker	1020.25	4
Allison Baker	758.75	5
Brandy Graham	656.50	6
Megumi Swase	654.75	7
John Hawk	450.75	8
Viv Simmonds	445.50	9
Mayu Tsuyuri	426	10

TEAM	Score	Placement
ONS - Nailpro Team Winner!	5221	1
Masterworks	1234	2
Crystal Nails	1139.75	3



2 gold medals in Las Vegas



3 gold medals in Orlando



Tom Holcomb as Crystal Nails contestant







## Spray Prep

Natural nail surface cleanser, and sanitizer that cleanses, and temporarily dehydrate the nail plate. Kills all pathogens, and helps prevent infections.

0,5oz: \$3.38  
Refill: \$19.61



## REGULAR PRIMER

a strong, effective bonding agent that can be used if necessary only. Before apply white acrylic, helps to create a crisp smile line, as it dries to a dull surface.

0,5oz: \$6.65



## Nail Prep

PREP booster that deeply dehydrates every layer of the natural nail, and helps improve adhesion on lift-prone clients.

0,5oz: \$3.90



## Base Gel

Covalent and ionic UV cure bonding agent that add an absorption layer between the nail plate and the gel. Permanently adheres any gel system to the natural nail. Can be soaking off.

0,5oz: \$13.37



## ACID FREE PRIMER

acid free bonding agent that acts like a double side adhesive, add an absorption layer between the nail plate, and the product. It dries to a sticky surface, do not use before apply white acrylic, as it make the smile line refinement hard.

0,5oz: \$7.80

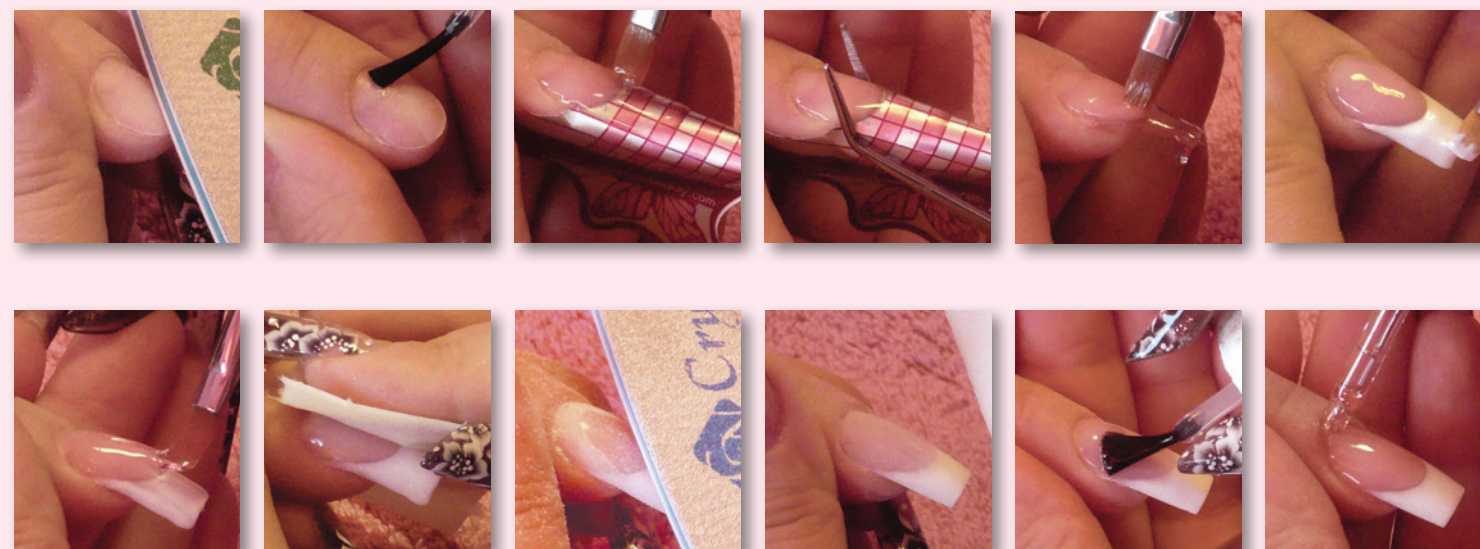
**Primer Stick** Contains acid free primer. Avoid skin contact. \$3.90



**Extreme curved file (150/150)** – Can be used for safely shape the free edge of the natural nail, and can be used to gently remove the shine of the natural nail plate, near the sidewalls, and the cuticle area, where is difficult to get at.



**Sanded buffer (220/280)** – Spongy padded, sanded buffer used to gently remove the shine from the surface of the natural nail, and the natural free edge area.



## PREP Technique:

1. Have the client wash their hands, and towel dry.
  2. Spray a small amount of Spray Prep to the nails, and hands to sanitize.
  3. Gently push back the cuticles slide along the nail plate toward the cuticle area, and toward to the lateral folds. Be sure, there is no remaining tissue adheres to the nail plate.
  4. If necessary, use a curette to rub off the non living skin from the nail plate.
  5. If necessary, use a manicure nipper, to carefully remove the pieces of hang skins.
  6. Shape the free edge of the natural nail with an Extreme Curved File (150/150) and gently remove the shine of the nail plate, near the sidewalls, and the cuticle area, where is difficult to get at.
  7. Gently buff the surface as well as the free edge area with a Sanded buffer (220/280)
  8. Remove dust, and deeply cleanse, dehydrate, and sanitize all layer of the nail plate, with Nail Prep.
- Before tip application, skip this step. Adhesives have superior properties, so it's not necessary to dehydrate the nail plate is*
9. For clients, who have got lifting problems, use a small amount of Acid Free Primer (avoid skin contact) to create an absorption layer between the nail plate, and the product. Apply only to the natural nail plate.





# CLEAR BUILDER GELS

Gel enhancements became popular in the mid 1980's. In 2006, Crystal Nails has been developed a gel system offerings a workable, easy to use formula, which ensures success for beginners, and experienced nail technicians. These gels had cured in UV light, and produce some heat during the polymerization. The newly developing Titanium Gel systems produce less heat, keeping the results of great adhering, and the long lasting wear ability. Crystal Nails gels are non-acrylate based, and don't need acid primers to achieve the perfect adhering. The Europeans' favorite service is the "nail bed extension" which provides facilities clients to have beautiful, natural, slim nail beds, and

an optimal balance of nail bed and free edge. Crystal Nails offers a complete range of colors, and coverage, to find the best shade for your client's skin tone, and fashion style. Crystal Nails colored gels are the number one in Europe. The key of success is the up-to-date developed base gel, fill with high pigments. These are the secrets of the Crystal Nails colored gel's incredible covering, and the highlight colors. These gels are soft, but strong enough to never flow over into the folds. Please check out the Crystal Nails Gel Lines, to get the satisfaction of your clients, and get success in your job with an easy, and great resulting work.

## Builder Clear #1

Thick, non self level builder gel. Easy to create the arches in one layer, without flooding the folders. Contains UV filter, and color refreshing formulas. The favorite builder gel of our students. The best in hot weather, because of the thick consistency. Cure time: 3 minutes in regular UV Lamp.

**Top Tip:** After curing, wipe off the sticky layer with a clean brush, before apply the next layer. This technique allows you a crisp smile line, and an even color.



0,18oz: \$7.68  
0,5oz: \$11.73  
1,8oz: \$29.53

## Builder Clear #2

Low consistency, high shine, water pure builder gel. Ensures easy, and quick backfills, or can be used to stick on nail art tools. Cure time: 3 minutes in regular UV Lamp, or 30 seconds in LED Lamp.



0,18oz: \$7.68  
0,5oz: \$11.73  
1,8oz: \$29.53

## TITANIUM

Non-acrylate based, formaldehyde free unique formula. Developed to create a workable, and long lasting product. Medium viscosity, non stringy builder gel, self level, but strong enough to hold the created shape, and never runs into the folders. Easy to pinch into a beautiful, slim shape. Cure time: 3 minutes in regular UV Lamp. 15 seconds in LED Lamp. Zsuzsanna Fekete, Nailympics winner used this product.



0,18oz: \$8.86  
0,5oz: \$15.67  
1,8oz: \$37.99

## XTREME CLEAR

Thick, but self level builder gel, which covalently and ionically bonds to the natural nail. Contains UV filter, and color refreshing formulas. Cure time: 3 minutes in regular UV Lamp. 15 seconds in LED Lamp.

0,18oz: \$8.86  
0,5oz: \$15.67  
1,8oz: \$37.99



## FUNGICIDE PEDI GEL

The most effective treatment which can kill fungus, or prevents fungal infections. Contains Chlotrimasol, which is an effective fungicide substance. Can be used on fingernails, and toenails. Cure time: 3 minutes in a regular UV lamp, or 30 seconds in LED.

0,18oz: \$8.66  
0,5oz: \$15.55



## Builder Pink

A semi-sheer pink builder gel. Great to reinforce the C curve, build the cuticle area thin, and invisible the new growth area. Use it with the Cover Pink, to create forever French, never outgrow, long lasting perfect nails. Cure time: 3 minutes in regular UV Lamp, or 30 seconds in a LED Lamp.

0,18oz: \$7.68  
0,5oz: \$11.73  
1,8oz: \$29.53



## Xtreme Pink

A semi-sheer pink builder gel, reinforced with fibers. Medium viscosity, self level product. Apply in thin coat, and place the client's hand in front of the UV lamp, for 15-20 seconds, than cure for 3 minutes in the UV lamp. Can be cured in a LED Lamp as well – for 30 seconds.

0,18oz: \$8.46  
0,5oz: \$13.98  
1,8oz: \$34.84



## Cover Pink Crystal

Shimmer frost crystal effect. Medium viscosity, self-level gel, which makes the nail bed interesting frosty shimmered.

0,18oz: \$7.68  
0,5oz: \$11.73



## Cover Pink

Opaque natural color, especially for beautiful nail bed extensions. Medium viscosity product, with a natural color. Can create the new growth area invisible for weeks. Apply thinly. For the natural result, put a small amount to the smile line area, than spread it over the cuticle to create a fade halfway the to cuticle. Perfect the smile line's inverse, cure, than fill the cuticle area using the Builder Pink. Build the arches by using any Crystal Nails Clear Builder Gel. Cure time: 3 minutes in regular UV lamp, or 30 seconds in a LED Lamp. (The World Champion's favorite)

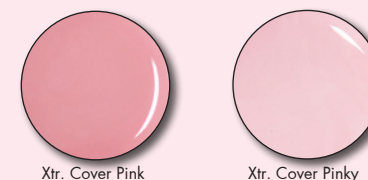
0,18oz: \$7.68  
0,5oz: \$11.73  
1,8oz: \$29.53



## XTREME COVER PINK

Medium viscosity, non stringy builder gel, self level, but strong enough to hold the created shape, and never runs into the folders. Opaque colors, especially for beautiful nail bed extensions. For the natural result, put a small amount to the smile line area, than spread it over the cuticle to create a nice fade. Perfect the smile line's inverse, cure, than fill the cuticle area using the Builder Pink. Build the arches by using any Crystal Nails Clear Builder Gel. Cure time: 3 minutes in regular UV lamp, 15 seconds in LED. Available in blush, and natural pink shades.

0,18oz: \$8.27  
0,5oz: \$12.80







# WHITE BUILDER GELS

## Xtreme White Builder

Snow white, thick builder gel. Workable, easy to create a crisp, perfect smile line.

0,18oz: \$8.86  
0,5oz: \$15.67

### Top tip:

Apply a thin base layer of clear builder gel to the natural nail, and the forms, create the nail extension's shape, and length. Cure, do not cleanse. Remove the forms, and then create the free edge, and perfect the smile line, using the Xtreme White Builder gel. Cure for 3 minutes. This technique allows the white gel to totally cures from up to down.



## Builder White

Snow white, medium viscosity builder gel. Perfect shade for clients with cold skin tone. Easy to create a crisp, perfect smile line. Use the base layer technique, to ensure the gel to totally cure. Cure time: 3-4 minutes.

0,18oz: \$7.68  
0,5oz: \$11.73



## Builder Soft White

A medium viscosity, workable builder gel, for clients, who like the natural white free edges. Perfect for championships, to create the lunula. Cure time: 3 minutes.

0,18oz: \$7.68  
0,5oz: \$11.73



# BUILDER GEL KITS



## XTREME Builder Gel sample kit

Xtreme Clear Builder Gel 0,18oz  
Xtreme White Builder Gel 0,18oz  
Cover Pink Gel 0,18oz  
Top Shine 0,14oz  
Cleanser 1,4oz  
Sponges  
Nail Form samples

\$ 17.99



## TITANIUM Builder Gel Sample Kit

Titanium gel 0,18oz  
Builder White Gel 0,18oz  
Cover Pink Gel 0,18oz  
Top Shine 0,14oz  
Cleanser 1,4oz  
Sponges  
Nail Form samples

\$ 17.99



## Cover Pink Trial Kit

Extreme Cover Pink Gel 0,18oz  
Cover Pink Gel 0,18oz  
Cover Pink Extra 0,18oz  
Top Shine 0,14oz  
Cleanser 1,4oz  
Sponges  
Nail Form samples

\$ 17.99







# GLOSS GELS

## Top Shine Gel

A hard, high gloss brush on gel, can be used the top of any enhancements, after the finishing, or the nail art service. Seals, and protects the enhancements. No sticky layer, no cleanse. Apply a very thin coat. Cure time: 2 minutes.



best seller!

0,5oz: \$13.37

Available in clear (the bestseller in Europe), and 2 transparent, shimmer colors.

## Top Seal Gel

A thicker, high gloss brush on gel. Eliminate buffing by filling the tiny lower spots. Holds the nail art strasses, and the thicker nail art products. Seals, and protects the enhancements. Cleansing: needed. Available in clear.



0,5oz: \$11.73



## Easy Off Top Shine Gel

Soak off, high shine, flexible brush on top gel, can be used for natural nail services.

0,5oz: \$11.73



## Mega White Film Gel

Thin, white gel paint for crisp smile lines. Can be used for the top of any enhancement, or for nail art. Apply two extremely thin coats.

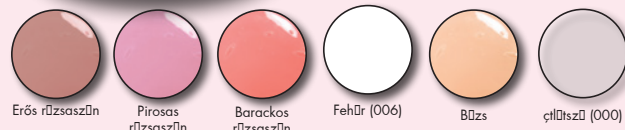
0,5oz: \$11.73



## French Top Gel

High gloss top gel, can be used the top of any enhancements, after the finishing, for a nice French look. Seals, and protects the enhancements. Apply a very thin coat. Do not apply any Top Shine, or Gloss Gel over it. Cure time: 3 minutes.

Available in clear (the bestseller in Europe), and 5 french colors.



Erős rúzsaszín

Pirosas rúzsaszín

Barackos rúzsaszín

Fehér (006)

Búzs

chítsz (000)

0,18oz: \$7.68

0,5oz: \$11.73

## Cleanser

Developed to remove the sticky, uncured layer or the builder gels and the gloss gels as well, create a super shiny, smooth surface.



1,35oz: \$2.56

3,38oz: \$5.47

17oz: \$19.61

# SOAK OFF FAMILY



## Double Manicure tip

For clients, who don't want to wear nail enhancements, but need to reinforce their natural nails. Perfect pink& whites, with crisp smile lines in 20 minutes. Over the white French tip, there is a clear guide tip, which has to be removed after the tip application. 14 sizes for perfect fit. Bestseller natural nail service in Europe. Available in French white, purple and pink.

Box/140pcs: \$10.05

Refill 20pcs of each size: \$3.35



## Easy Off family (Soak off gels for natural nail services)

### Base Gel

Covalent and ionic UV cure bonding agent that add an absorption layer between the nail plate and the gel. Permanently adheres any gel system to the natural nail. Can be soaking off.

0,5oz: \$13.37



### Cover Mani Gel

Soak Off, soft gel which is especially developed for natural nail services. Camouflage the natural nail plate, ensures an invisible new growth area. Can be used with mani tip, or any other Crystal Nails soak off gel. Can be used for fingernails, and toenails as well.

0,18oz: \$8.66



### Easy Off Gel

Especially for strengthen the natural nails. Easy to soak off. Flexible, and strong at the same time. The own brush ensure the application as easy as a nail polish. Available in clear, and transparent pink, and milky pink (semi-share).

0,5oz: \$11.73



### Easy Off Top Shine Gel

Soak off, high shine, flexible brush on top gel, with incredible and long lasting shine. Cure time: 2-3 minutes. Cleanse after curing. Can be used on the top of gel, or acrylic nails, nail art, any easy off color, or easy off mani gel.

0,5oz: \$11.73







## Mani Tip Application

1. Push back cuticles, and gently remove shine from the natural nails, with a 180 grit Crystal Nails Green Extreme file. Do not shorten, just shape the free edge.
- \* do not over file the natural nail, but be sure, there are no shiny spots on the nail plate, for proper adhesion, and to eliminate lifting.
2. Wipe off dust, and deeply dehydrate, and sanitize the natural nail with Crystal Nails Spray Prep.
3. Match the tip to the natural nail. The tip should fit from side to side of the natural nail, within the finger's lateral sidewalls.
4. Place a small amount adhesive to the white tip. Be sure, you spread the adhesive even, also to the corners.
5. Secure the Crystal Nails Mani Tip to the natural nail's free edge, and hold it for a few seconds. Press firmly against the free edge, to be sure, it's securely adhered. Be sure, that the tip is fitting side to side to the natural nail's surface, and the smile line is in the right place, and direction.
6. Clip off the clear guide tip, and the tab.
7. Refine the mani tip's free edge, with a Crystal Nails Green Extreme Curved abrasive, and gently buff the surface of the tip.
8. Wipe off the dust, and use a very thin layer of acid free primer (only on the natural nail's surface). Let the primer dry.
9. Apply a thin layer of Easy Off Base gel. Avoid skin contact, and be sure to cap the free edges.
- Cure for 2 minutes in regular UV Lamp or 10 seconds in LED.
10. Apply a coat of Crystal Nails Cover Mani Gel thinly, over natural nail. Do not cover the free edge. Be sure that the gel didn't flow into the cuticle, and into the lateral folds. Create a beautiful fade halfway to the cuticle, to make the new growth area invisible.
11. Refine the smile line with a clean brush, and double check, the cover gel is separated from the tip.
12. Apply a thin layer of Easy Off Top Gel, and cure for 2 minutes.

\* Avoid skin contact, and be sure, to cap the free edges as well.

Amazing colors and hues, impressive effects, inimitable quality.

## Bold Color Gels

The key of success is the up-to-date developed gel, fill with high pigments. These are the secrets of the Crystal Nails colored gel's incredible covering, and the highlight colors. These gels are soft, but strong enough to never flow over into the folds, it's easy to create firm strokes, or 3D effect nail art symbols. Cures fully in 2-3 minutes in UV lamp. 0,18oz: \$8.66

## Bold Color







The secret is the amazing glitter pieces, which are incredible shiny, almost jarring, and illuminating. Rich colors, and real jewel impression.  
Top Tip: Apply between two layers of clear builder gels.

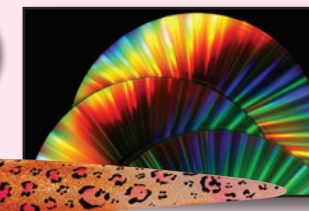
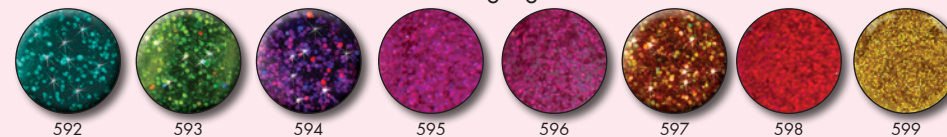
0,18oz: \$8.66

## Brilliant Collection



## Laser Brill Collection – Acts like the highlight of laser.

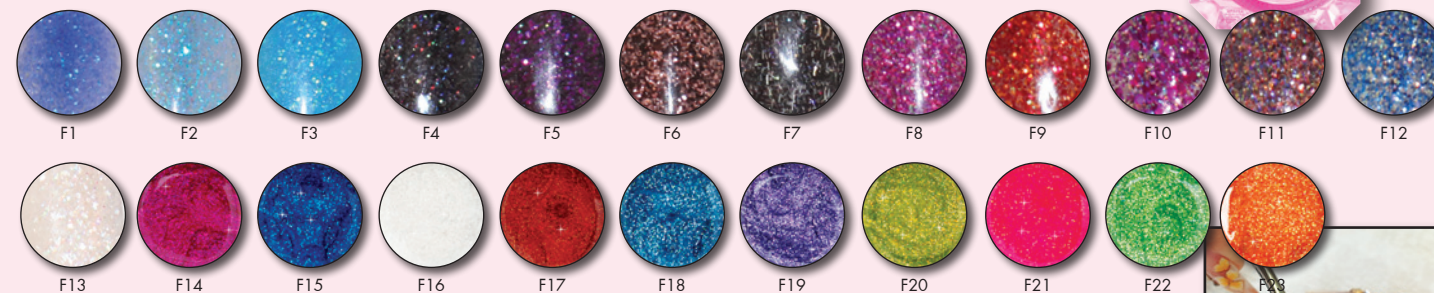
0,18oz: \$8.66



## Fly Brill Collection



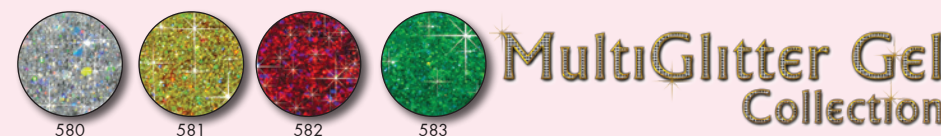
New formulated Crystal Glitters, which dazzles, like a jewel. Easy to apply, because the glitters never dipping to the bottom of the jar. Spectacular, and workability. 0,18oz: \$8.66



## Multi Glitter Collection

Four components of glitters ensure the amazing dazzle, and the special lightening effects.

0,18oz: \$8.66

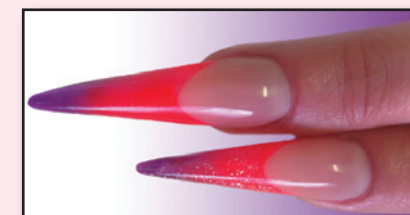
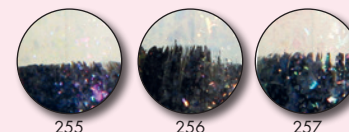


## MultiGlitter Gel Collection

## Crystal Magic Collection

Effect gels. Customize your gel colors. Indulge in our palette of colored gel hues, in special effects. Add a bit of glint with a layer of special sparkle effect for nails that are dressed to impress.

0,18oz: \$8.66

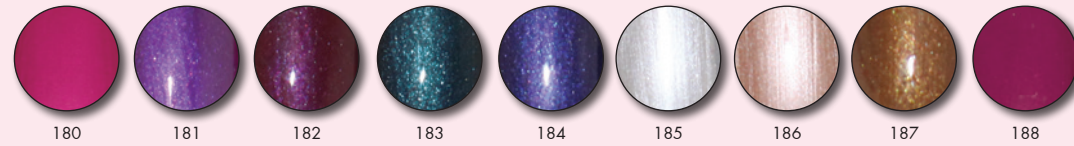




## Metal Collection – Intensive chrome colors. 0,18oz: \$8.66



## Pearl Collection – Dressed to luxury. 0,18oz: \$8.66



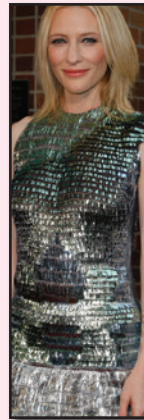
## Silk Metal Collection – Revived luxury. 0,18oz: \$8.66



## Sparkling metal Collection – Chrome colors spiced by tiny glitters for the elegant look.



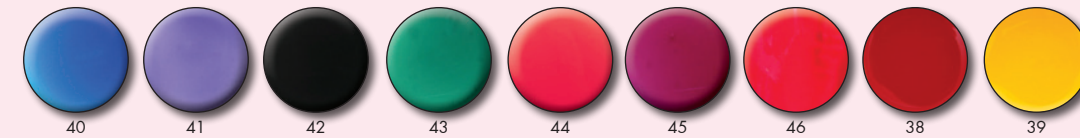
## Ice Metal Collection Top Trend of 2012. Colors and lights playing together on the nails.



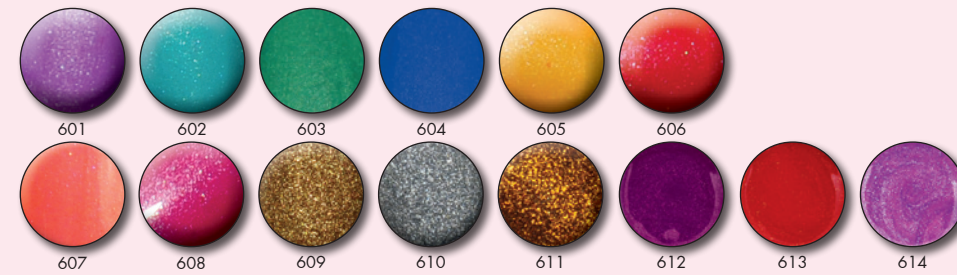
## Snow Crystal Collection – Cold sparkling effects. 0,18oz: \$8.66



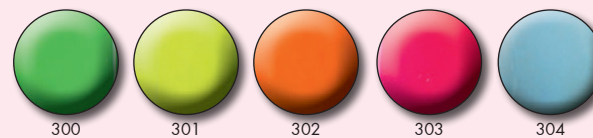
## Glass Effect Colors – Transparents hues. 0,18oz: \$8.66



## Sparkling Collection – The luxury of champagne. 0,18oz: \$8.66



## Neon Collection – Bold neon colors. 0,18oz: \$8.66



**NEON**

## Neon Crystal Collection – Bold neon colors with a tint of glitter. 0,18oz: \$8.66







# COLOR GELS

## Tiny Fiber-glitterized Collection – With tiny fibers.

0,18oz: \$8.66



## Glitter Effect Collection – Give MAGIC into your colored gels.

0,18oz: \$8.66



## Hot Summer Colors

The best-seller fashion colors. More pigments for rich colors, and detailed work.

0,18oz: \$8.66



## 3D GELS – Really thick colored gels, to create spatial, 3D nail arts.

0,18oz: \$8.66



18 821 822 823

www.crystalnails.com

## Giga Pigment Gels –

More pigments for rich colors, and detailed work. Easy to create tiny, slim strokes, and perfect for the unique Crystal Nails stylus nail art technique. The secret magic to create color gradients, and for spatial designs. Apply thinly for best results.

0,18oz: \$9.45



# CHAMELEON GELS



Exotic hot trend. Bright, custom, capricious, expressive, bold. Like a real Chameleon.

0,18oz: \$9.45

## Thermosensitive

Body warm

cool



230 Turquoise to Ocean 231 Pink to Sky 232 Red to Wine 233 Yellow to Orange

## Photosensitive

Shadow

Sunlight



240 Sky to Indigo 241 Punch to Magenta 242 Rose to Bordeaux 243 Sun to Red

Rainbow different colors, changes by movements.



260 261 262 263 264

Transparent light color tint, semi sheer "Rainbow" effect.



250 251 252 253 254



www.crystalnails.com

19





# COLOR GEL KITS

Take a try, and we guarantee to fall in love with Crystal Nails.



**Favorite Colored Gel Kit (Bold Colors)**



\$51.97

**Favorite Colored Gel Kit (Metal-Neon-Pastel)**



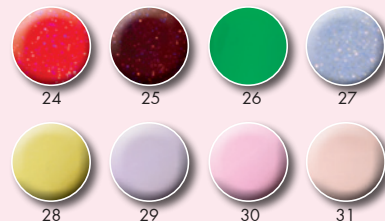
\$51.97

**Snow Crystal Kit**



\$51.97

**Spring Colors**



\$51.97

**Autumn/Winter Colors**



\$51.97

**Winter Fashion (Blues & Greys)**



\$51.97

73, 74, 75, 82, 86, 183, 184, 185

**Fly Brill Kit**



\$51.97

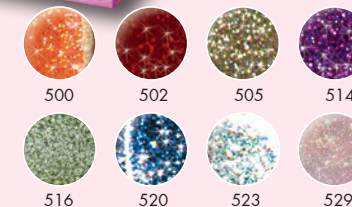
**Summer Hot Brill**



\$51.97



**Brilliant Gel Kit Variation 1**



\$51.97



**Brilliant Gel Kit Variation 2**



\$51.97



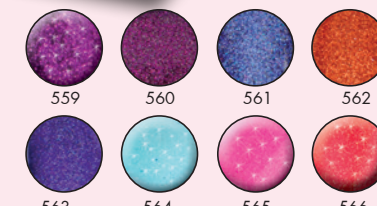
**Brilliant Autumn /Winter Collection**



\$51.97



**Brilliant Spring 1**



**Giga Pigment Gel Kit**



\$56.69

**Sparkling Kit**



\$51.97



**Brilliant Spring colors 2**



\$51.97





# LIQUID & POWDER SYSTEM

## Monomers



### Crystal Nails odorless liquid

For nail technicians, who doesn't like to smell the liquid while working. For best results, use it with the odorless system's powder.

1,35oz: \$11.73  
3,38oz: \$23.5



### Crystal Nails Liquid

A reinforced cross-linking sculpting liquid especially for lifting-problems, and cracking problems. Creates tough, crack-resistant enhancement with superior adhesion to the natural nail. Can be used with any Crystal Nails powder.

1,35oz: \$7.83  
3,38oz: \$15.67  
17oz: \$51.97

## Crystal Nails powders

**Master Powders** – Fine grounded powder, with an easy workability, and long lasting color. These powders activate the cross-linking, and polymerization of any Crystal Nails Liquid. Available in 2 different semi-share pink, a bright white, and a crystal clear. Fast cure product. The 2012 US champion has won the competition by using them.



0,6oz: \$7.8  
0,8oz: \$10.91  
3,5oz: \$25.91



# LIQUID & POWDER SYSTEM



## Master Cover Powders

– Gives full coverage to camouflage the nail bed problems. No more outgrowing! With the sculpting of cover powder, the sign of the new growth area will never be seen. Available in 6 different colors for the best custom pink & white results. Fast cure product. The 2012 US champion has won the competition by using them.



0,6oz: \$7.8  
0,8oz: \$10.91  
3,5oz: \$25.91

## Odorless System Powders

– Developed especially for the odorless liquids, but can be used with the regular Crystal Nails Liquid as well. Creamy consistence gives you a long, easy workability.



0,6oz: \$7.8  
0,8oz: \$10.91

## Slower Powders

Fine grounded powder, with an easy workability, and long lasting color. These powders activate the cross-linking, and polymerization of any Crystal Nails Liquid. Available in 3 different whites, a semi share pink, and crystal clear for the best pink & white results. Slow cure product. Ideal for beginners.



0,6oz: \$7.8  
0,8oz: \$10.91  
3,5oz: \$25.91

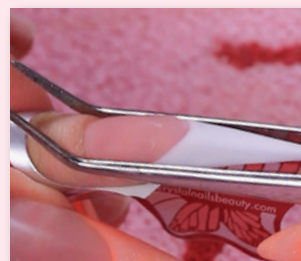
## Colored powders

More, than 140 colors, and hues. Crisp, and creamy colors, brilliant sparkling, pearls, cute pastels, metals, and 2012's best sellers the neon colors. The extra fine grains creates long lasting, rich colors.



0,25oz: \$5.87





After a proper prep and the form application

## Zone 1: The nail bed

Place a medium size bead of Custom color Cover powder, and press firmly into the one than the other side of the nail bed. Use a press and smooth motion, to spread the bead perfectly. Pull into the natural free edge too, to create the illusion of long, and sleek nail bed. Shape the smile line's inverse.

## Zone 2: Cuticle area

Raise the nail bed with a medium size bead of Crystal Nails Dark Pink Powder, to fill the cuticle area. Keep the product thin, and avoid touch the skin. This application technique makes the cuticle area invisible, to reach the never grown out effect.

## Zone 3: The free edge

Place a medium size bead of White Acrylic onto the form, and press firmly to equally wet it for easier sculpting control. Press up one side of the nail bed area (zone 1) with slow, small controlled presses. Continue to press up to the opposite side to refine your placement for a clean, continues line. Do not spread the bead only press it gently into shape. Refine the sidewalls, and the free edge length.

## Smile line:

Use the tip of your brush, to perfect the smile line. If necessary, place a tiny bead of white acrylic to the corners, to create the smile line's crisp and nicely pointed end.

## Building the arches:

Place a medium size bead of Crystal Nails Clear powder between the nail bed and the free edge. Use the press and smooth technique and firmly motions, spread the acrylic onto the entire free edge. Be sure to build the arches. Remember: less is best. To minimize the dust, and heavy filing, sculpt with your brush.

## How to pinch?

You can use a tool for pinch the nails, to make a dramatic C curve. Pinch the nail when it's half way hardened (about 1-2 minutes after the application). Pinch along the sidewalls of the nail bed, and the free edge at the same time. Use a metal pinch tool than you can put a pinch clip on to create long lasting dramatic C curves.

Finish the nails, and bring to a high shine.



## Odorless Trial Kit

Odorless Clear 0,11 oz, Transparent Pink 0,11 oz, Ultra White 0,11 oz, Odorless Liquid 0,7 oz, Form samples

\$10.39



## Master Trial Kit

Master Dark Pink 0,7 oz, Crystal Clear 1,7 oz, Super White 0,7 oz, Crystal Nails Liquid 0,7 oz, Form samples

\$10.39



## Master Nail bed extension Trial Kit

Master Cover 0,7 oz, Crystal Clear 1,7 oz, Super White 0,7 oz, Crystal Nails Liquid 0,7 oz, Form samples

\$10.39



## Slower Trial Kit

Slower Transparent Pink 0,7 oz, Ultra White 0,7 oz, Brilliant Colored Powder 0,7 oz, Crystal Nails Liquid 0,7 oz, Form samples

\$10.39





# ACRYLIC ACCESSORIES



## UV Filter

Color refreshing, and UV filter formula, which prevents yellowing, and protect from UV light, or sunlight. Can be used the top of the acrylic nails, or the natural nails, by refreshing their colors.

0,5oz: \$3.90



## ACRYLIC REMOVER

Remove tips, soak off gels, Crystalac, and acrylic nails. Contains lanolin, to protect the natural nails, and skin.

\$3.90



## Pinch tool

A must be tool for sculpted nails, to create beautiful C curves. Stainless steel, washable.

\$7.8



## C curve clip

Helps to hold the beautiful C curve of the pinched nails, to make the curve permanent. It's a must have tool for championships, and can be used at saloon works as well, to create sleek, and beautiful curved nails instead of flat, wide enhancements.

\$5.51

## Remover Foils

Use the remover foils, by apply a few drops of acrylic remover to the cotton, inside of the foils, than cover the fingertip tightly. Under the foils, heat arises, makes the remover process more efficient. After 10-15 minutes, remove the foils, and gently remove the coat (acrylic, soak off gels, or CrystaLack) from the natural nails. Nurse the natural nails by apply a few drops of Crystal Nails cuticle oil. 100pc/box.

\$10.40

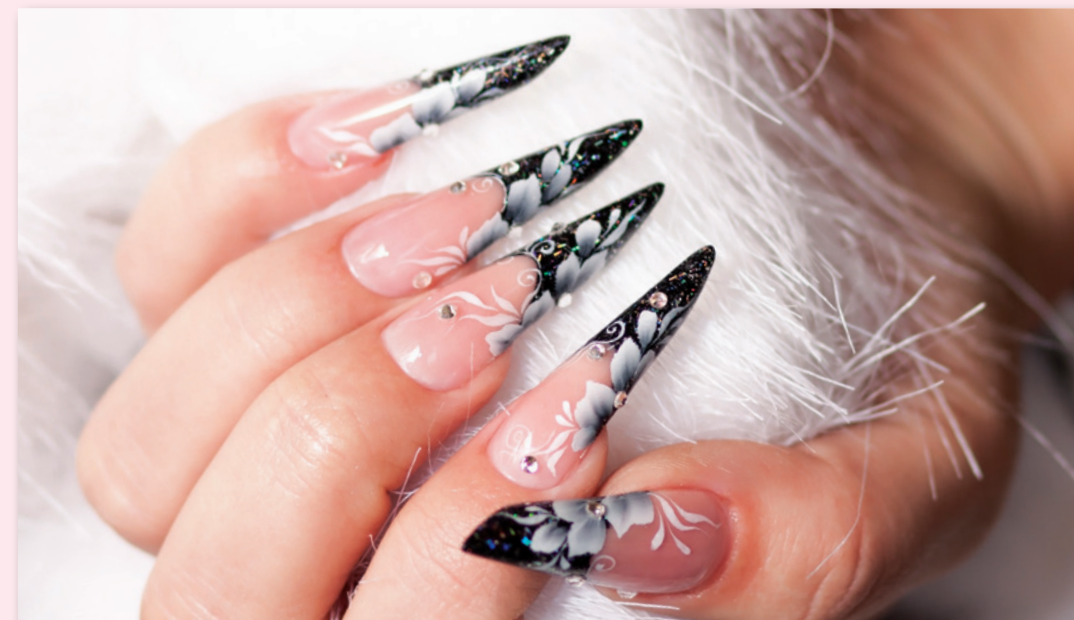
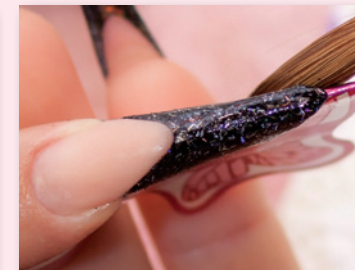


**Top Tip:** Use the remover foils, by apply a few drops of acrylic remover to the cotton, inside of the foils, than cover the fingertip tightly. Under the foils, heat arises, makes the remover process more efficient. After 10-15 minutes, remove the foils, and gently remove the acrylic from the natural nails. Nurse the natural nails by apply a few drops of Crystal Nails cuticle oil.

# ACRYLIC ACCESSORIES



**Modern "pipe" shape – the European client's favorite** Are you interested in the NEW SHAPE? (Visit our website at [www.crystalnails.com](http://www.crystalnails.com))





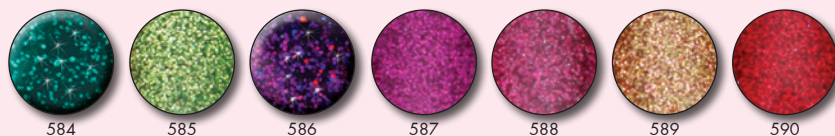


# COLORED POWDERS

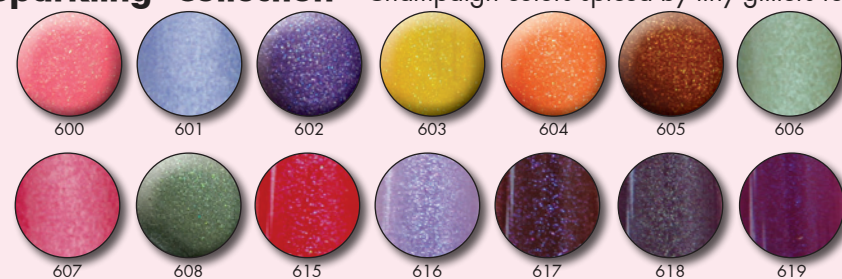
**Bold colors** – Great covering, intensive colors, highly pigmented. 0,25oz: \$5.87



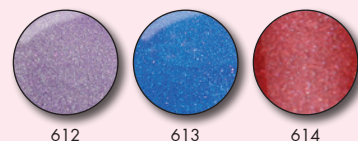
**LaserBrill powders** Amazing shine, unbelievable impressions. The best seller in Europe, the No1 favorite of clients. 0,25oz: \$5.87



**Sparkling Collection** – Champaign colors spiced by tiny glitters for the elegant look. 0,25oz: \$5.87



**Ice Metal Colors**  
Cold metal colors. 0,25oz: \$5.87



# COLORED POWDERS



## Giga Pigment fine powders

Fine grounded powder s, contains more pigments for rich colors, and detailed work. Easy to create tiny, slim, flat designs. The secret magic to create color gradients, and for spatial designs. The new generation of 3D acrylic nail art.

0,25oz: \$5.87



## Crystal Magic effect powders

Special effect powders. Customize your colors. Indulge in our palette of colored acrylics hues, in special effects. Add a bit of glint with a layer of special sparkle effect for nails that are dressed to impress.

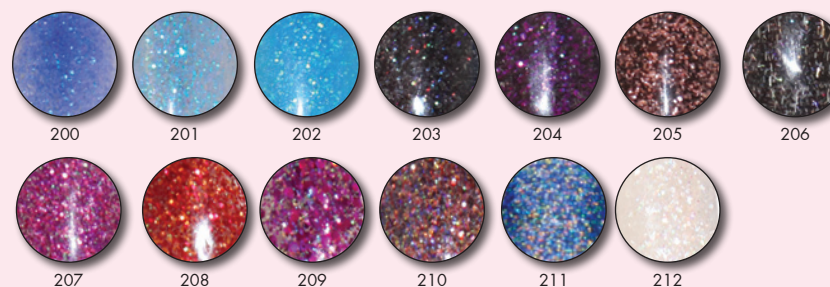
0,25oz: \$5.87



## Fly Brill Collection

New formulated Crystal Glitters, which dazzles, like a jewel.

0,25oz: \$5.87



## Neon Collection

Bold, and sparkle colors.

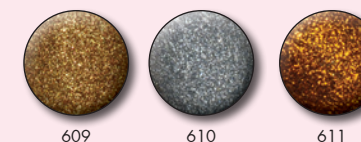
0,25oz: \$5.87



## Mercury Colors

Mercury colors. Interesting, special effects.

0,25oz: \$5.87







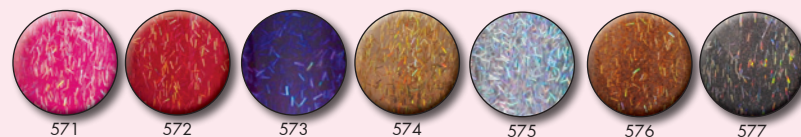
# COLORED POWDERS

**Brilliant Collection** – The secret is the amazing glitter pieces, which are incredible shiny, almost jarring, and illuminating. Rich colors, and real jewel impression. 0,25oz: \$5.87



## Small Fiber-glitterized Colors –

With tiny fibers  
0,25oz: \$5.87



# COLORED POWDERS



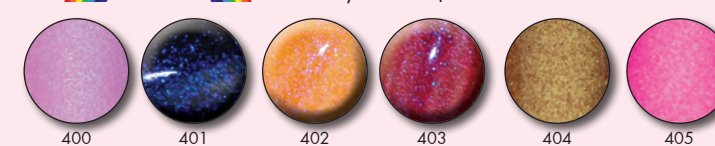
## Thermosensitive Powders

0,25oz: \$6.89



## Rainbow Colors

0,25oz: \$6.89







# COLORED ACRYLIC KITS

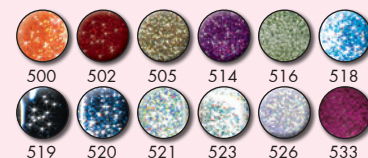
Buy 9, get 12, \$35.08



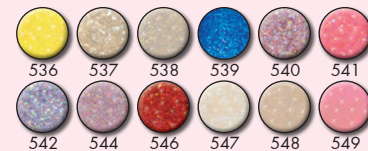
**Favorite classic colors**



**Favorite Brilliant Colors**



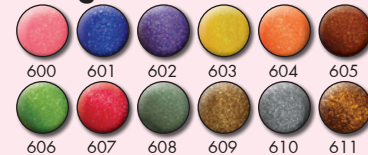
**Variations of Brilliant Collection**



**Snow Crystal Colors**



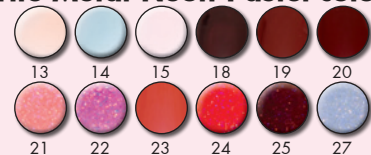
**Sparkling Color**



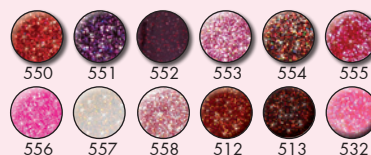
**Favorite Color Powder Kit Spring Collection**



**Favorite Metal-Neon-Pastel colors**



**Brilliant autumn/Winter**



**Pastel Colors**



**Giga Pigment Fine Colors**



**Summer Hot colors**



**Brilliant Summer Hot Colors**



# COLORED ACRYLIC KITS





Crystalac: Crystal Nails Crystalac gel polishes are the future of natural nail services, the European nail professionals swear by it. Crystalac goes on like polish, wears like gel, and can be soaking off in minutes. Dries in seconds, resists chips, peels, and smudges. Stay on natural nails, or enhancements for minimum 21 days, keep on their incredible color, and high shine. The highest coverage instead of the other gel polishes on the market ensures to apply also in one layer. The gels come in over 100 colors, and shades, and have got a special, flattened own brush, which ensure the perfect, even, and easy application. Cure in LED lamp (30 seconds), or regular UV lamp (2 minutes). Begin every service by using a Base Gel, and finish by apply the GLO top shine. Available in 0,14 oz (Trial Size), and 0,5oz bottles.

0,13oz: \$7.40  
0,5oz: \$13.78



## Bold colors



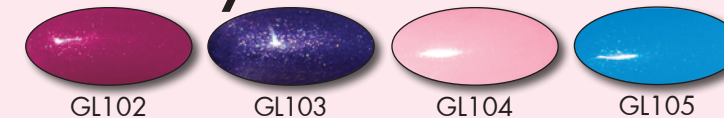
## Ice Cream Colors



## Paris Colors – the trend colors of the capital of fashion

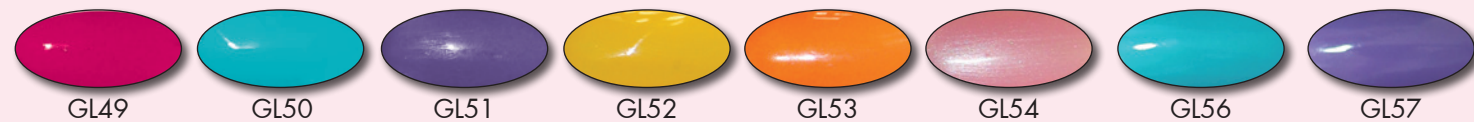


## Snow Crystal Colors – act like velvet





## Fashion Summer



## French Colors



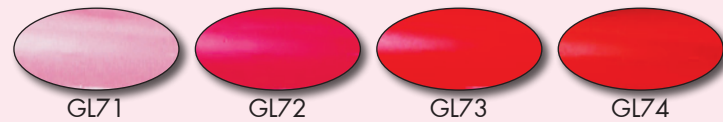
## Military Colors



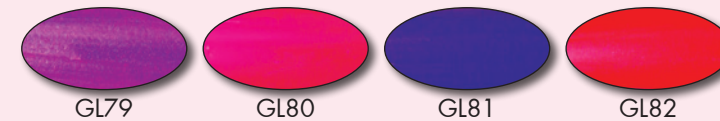
## Brill Colors



## 2012 Spring/Summer colors



## Metal Colors – the cold shade of steel in warm color hues.



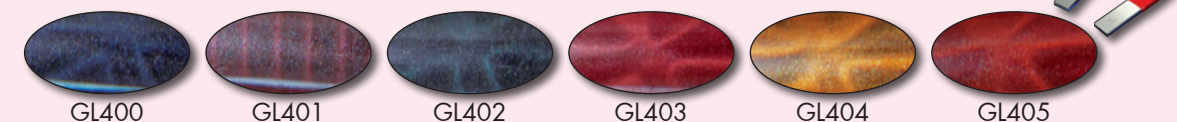
## Neon Colors **NEON**



## WINTER COLORS



## Magnetic Colors



## Magnet kit for magnetic CrystalLac - With 3 different magnets and designs: \$5.12





Buy four, get six \$58.66

## Summer Hot Colors



## French Colors



## Elegant Shades



## Ice Cream Colors



## Paris Colors



## Exclusive Shades



**Crystal Lac White** – Great covering, bright white color with only one layer. Cures totally. Dries only in LED, or UV Lamp, ensure enough time to create a crisp, beautiful smile line.

0,5oz: \$13.78

## Crystal Lac French Colors

Semi-sheer colors, which camouflage the nail bed problems, but let the cuticle area thin, and invisible of new growth area.



## Base Gel

Covalent and ionic UV cure bonding agent that add an absorption layer between the nail plate and the gel. Permanently adheres any gel system to the natural nail. Can be soaking off.

0,5 oz: \$13.37



## Easy Off Top Shine Gel

Soak off, high shine, flexible brush on top gel, with incredible and long lasting shine. Cure time: 2-3 minutes. Cleanse after curing.

0,5oz: \$11.73







# NATURAL NAIL CARE



## BASE COAT

Sticky base coat, designed to create a strong adhesion between the enamel, and the nail plate. Protects the natural nail from yellowing, or messing by colors.

0,5oz: \$3.90



## ANTI-FUNGUS

A fungicide solvent contains tolnaftate, which kills especially nail fungus. Buff a drop for each nail.

0,5oz: \$6.10



## CUTICLE REMOVER

Remove strong, thick cuticles, ensure easy remover from the nail plate. Drop a small amount around the cuticle of each nail, wait for 2 minutes, gently remove the dead skin from the nail plate, and then rinse with warm, soapy water.

0,5oz: \$3.90



## Dull Top Coat

The last European trend is to make enamels, or colored gels, acrylics dull. Ensure to create trendy nail arts, playing with the shiny, and the dull surfaces contrasts.

0,5oz: \$5.00



## Dropper Dry

Protects the nail polish, and reduces dry time. Deeply penetrates, and nourishes the cuticles.

0,5oz: \$5.24



## DEFENDER

Fast dry top coat that seals the surface of enamel. Provides a hard, scratch-resistant top layer, with long lasting, high shine.

0,5oz: \$3.90



## HARDENER

Strengthening base coat with cross linkers, that is safer like formaldehyde. Recommend for thin, weak, or brittle nails. Use 2-3 times a week for optimal results.

0,5oz: \$3.90



## HIGH SHINE

High Gloss top coat, with an incredible shine, because of the tiny diamond pieces.

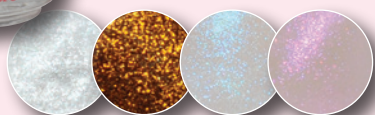
0,5oz: \$3.90



## HOLOGRAM TOPCOAT

Sparkling effects top coat comes in silver, gold, diamond, and pearl shades.

0,5oz: \$3.90



## RIDGE FILLER

Ridge filling base coat, designed to camouflage nail imperfections, by creating a smooth surface. Contains seaweed essence to keep the nails healthy, and regenerate the nail plate.

0,5oz: \$3.90



## UV TOPCOAT

Fast drying UV-activated top coat. Dries in 60 seconds in UV lamp, and create a durable, high shine.

0,5oz: \$5.71



## Cuticle Oil

Deeply penetrate, and nourish skin, and nails. Neutralize the chemicals used during the enhancement service. Can be used also for acrylic nails to buff into the nail enhancement, give them back a high shine. Available in vanillin, coconut, peach, freesia, and pineapple scents.

0,5oz: \$3.90



## Cuticle Oil with Tea Tree essence

Deeply penetrate, and nourish skin, and nails. Contains tea tree essence, that sanitizes, and makes the nails, and skin healthy.

0,5oz: \$5.00



## Cuticle oil pen

Precise application save product. Great product for sell to your client, or for a gift for them. Perfectly fits in a famine briefcase. For travelling, or for beach. Available in cute Bubble Gum scent.

0,5oz: \$3.80



# NATURAL NAIL CARE





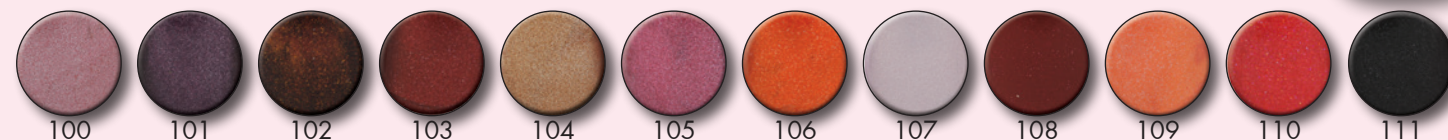


Professional-quality nail color that provides long-lasting wearability. The perfect viscosity ensures the even and easy application. The precise 440 hairs of its own brush ensure to apply the color without streaks. Formulated with the perfect balance of pigments and solvents.

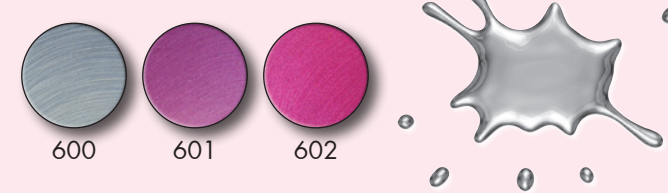
## Decor (bold) colors – 0,5oz: \$3.50



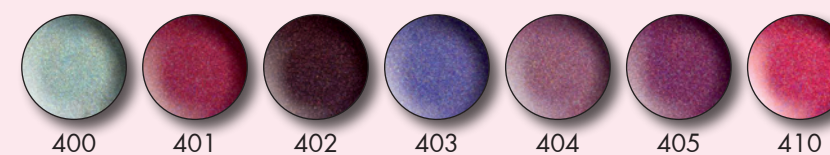
## Diamond colors – 0,5oz: \$3.50



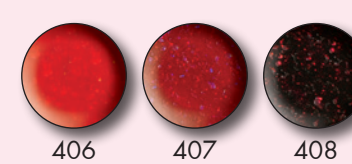
## METAL COLORS – 0,5oz: \$5.51



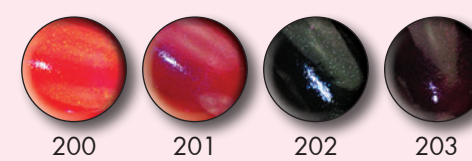
## Holoprism collection – 0,5oz: \$5.51



## Liquid Crystal Collection – 0,5oz: \$5.51



## GOLD GLAMOUR COLORS – 0,5oz: \$5.51



## French Colors – 0,5oz: \$3.50



## Nail polish thinner 1,4oz: \$3.70





## Crystal Nails sculpting forms



### Stiletto form

Long form, with guide lines especially for stiletto shape. You can easily sculpt stiletto nails, even by builder gels, or acrylics. Top Tip: Pinch the nails after the base layer, the nailbed extension, and the final arches layer.

250pcs: \$13.35



## Original Crystal Nails Form

There are 3 different surfaces on a form: an adhesive layer, a paper, and a light plastic. This specific coat holds the C curve in shape that will stand up for heavy pressure. The strong adhesive ensures the form will stay at the desired angle, under the client's free edge.

500pcs: \$13.35



## Extreme Butterfly Form

Provide a perfect fit with strategically placed tabs, and perforations. Use it for longer nail extensions, or extreme long nails, stilettos, or any other nail shapes. Great choice for sculpting regular saloon nails.

300pcs: \$13.35



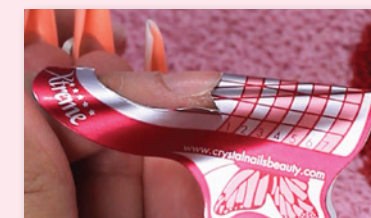
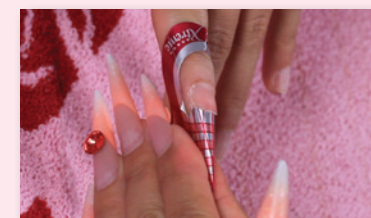
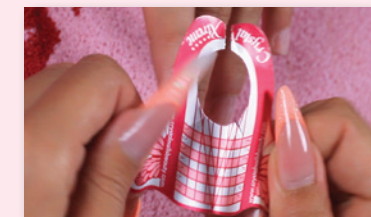
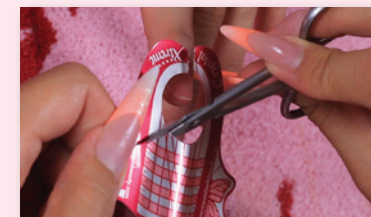
### Form feeder slim

\$7.8



### Form feeder

(for the Extreme Butterfly forms)  
\$7.4



## Form application

After prep the nail

1. Roll the form between your thumbs, to create a nice C curve.
2. Place the Crystal Nails Butterfly form under the natural nail's free edge, angle down, to create the desired arch. Be sure, to fit properly, and there are no gaps between the form, and the free edge.
3. If needed, use a manicure nipper, and pre-tailor the centered circle ensuring it fits snugly against the natural free edge. This will help prevent the product flow between the form and the client's free edge.
4. Use a manicure nipper to cut it a 45° angle, where the natural nail's free edge's corners are, to help creating the perfect C curve.
5. Squeeze the rear tabs to secure the form. The rear tabs may not pinch together or opened depends on the angle.
6. Squeeze the lower tabs together and press the form toward the nail to refine the tunnel shape.

You are ready to sculpting







# ABRASIVES



## Crystal Nails Red Extreme Curved file (100/180)

Two in one. You can be done with two different steps with only one abrasive. \$1.54



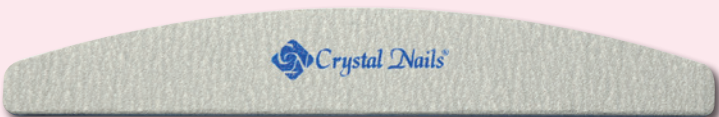
## Crystal Nails Blue Extreme Curved file (150/150)

Can be used for reducing existing product for rebalance file prep. \$1.54



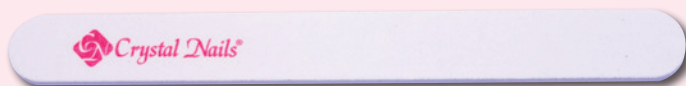
## Classic Crystal Nails Curved File (Red)

100/180 Ideal for filing off colored gels, french top gels, or nail art paintings. \$1.30



## Classic Crystal Nails Curved File (Blue)

150/150 Ideal for blending tips, or refine the enhancement's shape. \$1.30



**Combined 2in1 Buffer** Buffer and abrasive in one tool. One side is 180 grit for shape, and finishing nail enhancements, the other side is a regular buffer surface (240) to refine the shape. \$2.99



## Crystal Nails Pink Extreme Curved file (100/100)

Can be used on freshly applied UV gel, or liquid & powder product. Determine the free edge, and the enhancement's shape, or for rebalance file prep. \$1.54



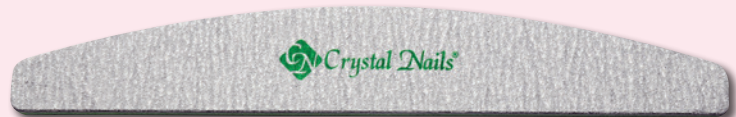
## Crystal Nails Green Extreme Curved file (180/180)

Can be used to freshly applied product, for smooth the surface. \$1.54



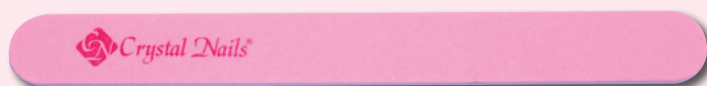
## Classic Crystal Nails Curved File (Purple)

100/100 Thinning nail enhancements before refill. \$1.30



## Classic Crystal Nails Curved File (Green)

180/180 Shape natural nail's free edge, or refine enhancements. \$1.30



## Pink abrasive (220/280) – For weak, thin natural nails.

\$0.98

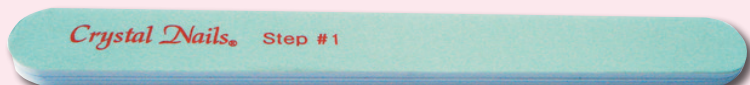


**Crystal Nails Sanded Buffer (100/180)** – Can be used to smooth the surface of the enhancement, or prep the natural nail plate. \$2.64

**Crystal Nails Sanded Buffer (220/240)** – Designed to smooth the surface of any enhancement, and eliminate fine scratches. Can be used for buff oil to the natural nail plate, or the enhancement. \$2.64



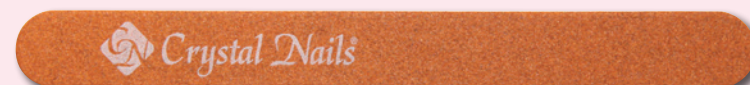
**Thin 3 way buffer** – Refine the enhancement's surface, create low shine to the natural nail, and the enhancements. The other surface of the abrasive creates high shine on enhancements and natural nails without removing layers from the natural nail. \$1.38



## Magic Shine Buffer– Give back high shine

in two easy steps.

\$1.38



**Crystal Nails thin wooden file** – Ideal for shape the natural nail's free edge during a manicure, a gel lac, or any enhancement service. Thin enough to glide under the free edge, without cut the soft tissue near the nail plate. \$0.59



## Chamois file – Chamois buffer for an incredible high shine.

\$1.8



## Sturdy 3 way buffer (240/800/3000) –

Shine in less time. It offers a firmer buffing surface, allowing more file pressure to finish natural nails, or enhancement with a high shine in seconds. Eliminate scratching by using the blue 240 grit side first, refine the shape with the white 800 grit side, followed by the gray 3000 grit side for brilliant shine in less time. \$1.77

# ABRASIVES



## Magic Shine buffer block

– Sturdy block, a huge surface can assort with the nail enhancements. Long lasting tool, for long lasting results.

\$2.64



## Buffer Block

The original buffer block (white). \$0.98



## Key-rack file –

Cute, and useful gift to your client. \$1.18



## Crystal Nails Files Tiger

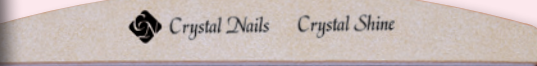
Dozen mini abrasives for natural nails (240/240). Great for client's gift. Dozen: \$3.86



## Crystal Shine System

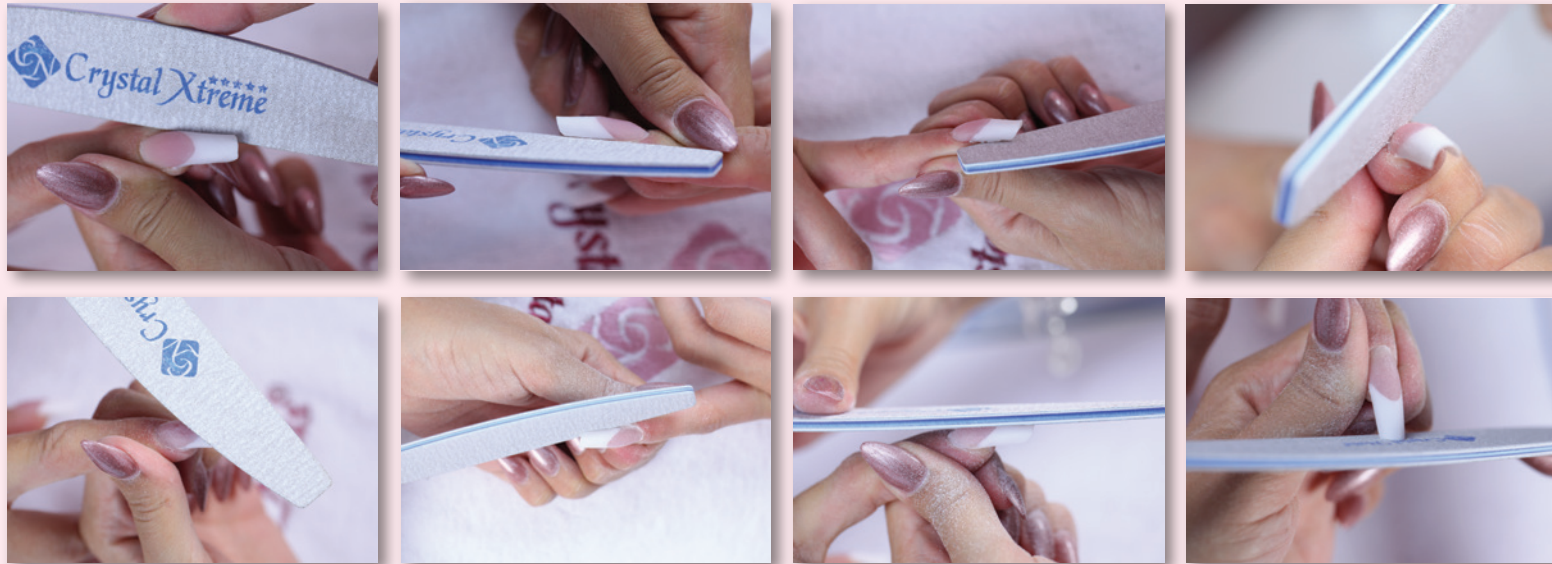
Gives the natural nail, and the acrylic coatings a long lasting, incredible shine. The oil penetrates to the nail plate layers, to protect, and create a healthy, beautiful look.

Includes: Shine Drops 0,5oz and a Chamois buffer 0,5oz: Crystal Shine drops: \$11.73



**How to apply? Buff the surface of the natural nail, or acrylic nail enhancement, using the Buckskin Buffer's black side. Than shake the Shine Oil, and massage to the nail surface. Than buff evenly to the nail plate (in one direction move only). Tom Holcomb used this on his last championship.**





## Finishing procedure:

- Sidewall refinement:**  
Establish the sidewalls line to come straight out of both the reverse, and the forward sides of the nail. Gently rotate the file underneath the enhancement to secure the crisp smile line corner, and the white, or colored free edge line.
- Bevel the reverse side of the nail evenly from cuticle to free edge.** The Crystal Nails Pink, or Blue Extreme Curved file is ideal for this step. Continue to bevel the forward side of the nail, to create a round surface at the sidewall point of the smile line.
- Cuticle line**  
Use firm, rounded motions to evenly refine the cuticle line an even and smooth surface. With this technique there will be invisible where the natural nail stops, and the enhancement starts.
- Barrel C curve**  
By hold the file at a 45° degree angle, bevel the extension edge to be thin and even. Use a multi directional movement to perfect the extension, and eliminate flat spots.
- Extension edge refinement**  
Shape the free edge for the client's needed. For a square nail, file parallel to the free edge. For a rounded shape, rotate the file under the nail.
- Refine the shape**  
Repeat all steps using one of the Crystal Nails Sanded buffers, to eliminate scratches.
- Shine buffing**  
Buff with the Crystal Nails 3 way Buffer for a high gloss shine. Be sure to cover steps 1-5 to ensure there are no fine scratches on the enhancement.

## Gel Sculpting "jewel" brushes



**Extreme Gel Brush #6** – Flat, square brush with synthetic hair, with a shorter, but reinforced hairs. \$10.16



**Jewel #4 Gel Brush** – Flat, square brush with synthetic hair \$7.80



**Jewel #6 Gel Brush** – Flat, square brush with synthetic hair \$8.27



**Firm Gel Brush** – Flat, square brush with synthetic hair, with shorter, brief, and firm hairs. \$9.76



**#6 Gel Brush** – Flat, square brush \$5.79







# LIQUID & POWDER SCULPTING BRUSHES



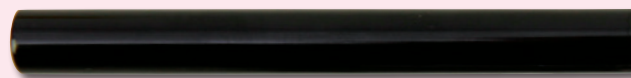
**Xtreme #8** – Reinforced hairs, extra large round taper brush head.  
\$15.67



**Jewel Kolinsky #6** – Large, round taper brush head  
\$9.37



**Jewel Kolinsky #8** – Extra large round taper brush head  
\$13.31



**The Big One #10** – Extra large round taper brush head, with the finest, but strong hairs.  
\$21.65



## CHAMPION BRUSH #10

Round taper brush head with reinforced hairs, and a perfect pointy flag. Strong at the shaft, and fine at the belly, ensure the perfect liquid & powder application. It comes with an exclusive box. Zsuzsanna Fekete's (Nailympics winner, twice European Champion) favorite.

\$23.23



# LIQUID & POWDER SCULPTING BRUSHES

**Kolinsky #6** – Round taper brush.

\$15.67



**Kolinsky #8** – Round taper brush

\$7.80



## One move nail art brushes –

Especially to create "one move" designs. By using the two side of the brush, ensures you to create incredibly quick, interesting, flat, and 3D designs to your client's nails.

Bevel (maxi) \$8.98

Bevel (mini) \$7.80

Straight \$8.98



One Move I.



One Move II.



One Move III.





# NAIL ART BRUSHES



**Twixi** – Especially for thin strokes, and precise nail art works. Can holds the water, and perfectly feeds to the very tip of the brush, let you mix a perfect acryl paint/water mix ratio.  
\$8.98



**Barbara Classic** – For fine, thin colored gel strokes. \$8.98

**Barbara II** – For siluettes, and shades. \$7.01



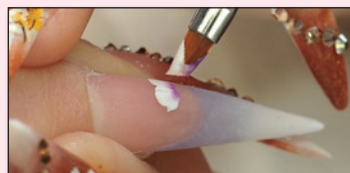
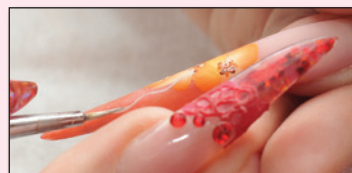
**P Brush** – Especially for aquarelle painting. Detailed, perfect shape ensures the fines strokes, or mixing the colors. \$8.89



**Gel Brush #3** – bevel, flat hairs especially for create crisp mile lines, and for brilliant colors nail art. \$7.01



**Aquarelle brush** – Especially for aquarelle painting. Makes the painting easy, the strokes crisp, and perfect controlled.



# NAIL ART BRUSHES



**Gel brush #2** – especially for gel painting

**#0 short brush** – especially for tiny, fine strokes. \$5



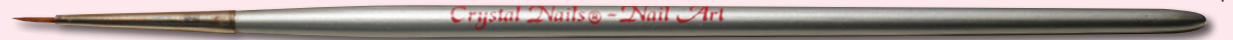
**#0 long brush** – especially for long, fine strokes. \$5



**#0 medium brush** – especially for outlines, shadows, fades. \$5



**Acrylic nail art brush #3** – Especially for acrylic nail art with short, round taper brush head \$7.60



**Acrylic 3D nail art brush #3** – Especially for acrylic, and gel nail arts for bigger surfaces. A little bit longer, round taper brush head



**Mini 3D acrylic nail art brush** – Short, round taper brush head especially for precise, small figures. \$10







# NAIL ART BRUSHES



**Sturdy 3D acrylic brush** – \$7.60



**3D gel brush** – Especially for thick, 3D gels. \$7.01



## Big Brush Kit

9 different nail art brushes, especially for gel nail arts.  
\$9.84



# TIPS



**Natural** – 100pcs: \$7.40  
50pcs refill in each size: \$4.33



**Clear** – 100pcs: \$7.40  
50pcs refill in each size: \$4.33



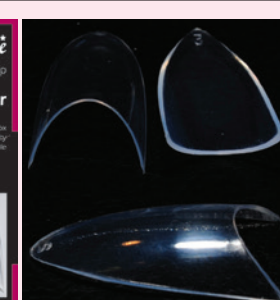
**French** – 100pcs: \$7.40  
50pcs refill in each size: \$4.33



**Curved tips** – 100pcs: \$7.40  
50pcs refill in each size: \$4.33



**Xtreme White Tip** – Deep smile line, dramatic C curve  
100pcs: \$10.59  
50pcs refill in each size: \$5.83



**Stiletto tip** – Build perfect stilettoes easily.  
100pcs: \$10.59  
50pcs refill in each size: \$5.83



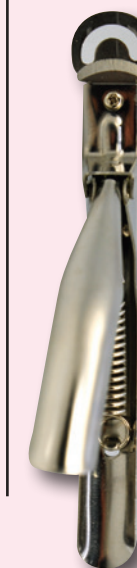
**Xtreme C Curve tips** – Straight free edge, with dramatic C curve  
100pcs: \$10.59  
50pcs refill in each size: \$5.83



**Brush on tip glue**  
Super strong nail adhesive, dyes in seconds. The own brush ensures easy, and quick application.  
\$3.03



**Nail Glue**  
The original nail adhesive.  
\$1.14



**Tip Cutter** –  
The precise scissor surface ensures to never squeeze the tip.  
\$8.98



## Theory of colors

The rainbow starts with invisible infrared and ends with invisible ultraviolet.

A color wheel normally has multiples of 12 segments.

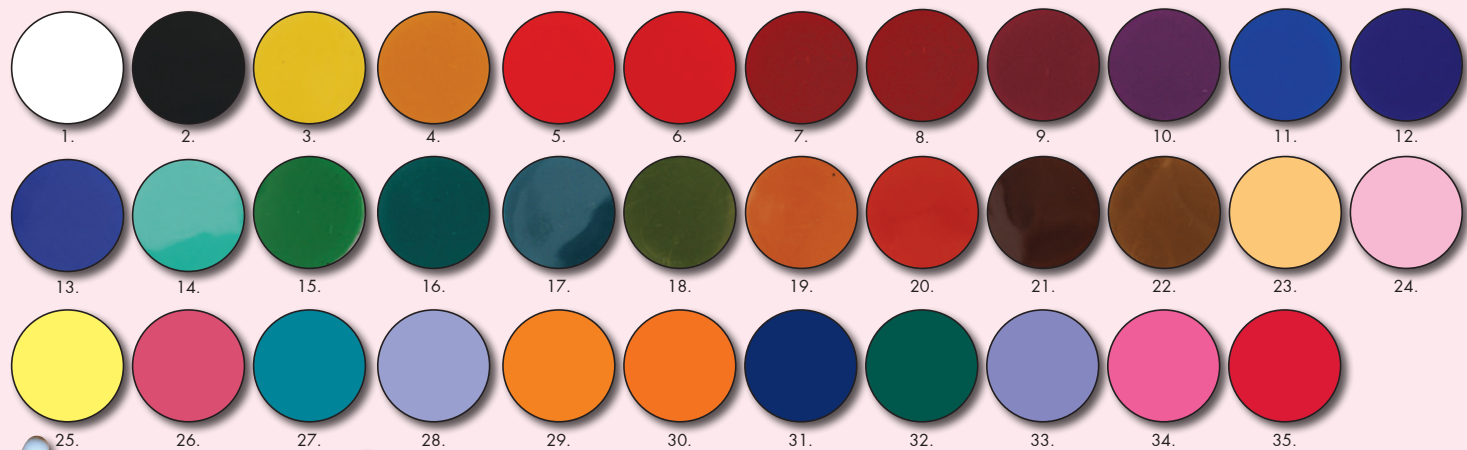
A basic color wheel shows the primary colors, secondary colors, and the tertiary colors and the relationships of these colors to each other.

- Primary colors are the three basic colors: Red, Blue, Yellow
- Secondary Colors: These colors are an equal blend of the two closest primary colors: Green, Orange, and Purple
- Tertiary Colors: Are made by mixing a Primary color with a secondary color. These colors are: Yellow- Orange, Orange-Red, Red-Purple, Blue- Purple, and Blue-Green
- The colors opposite each other on the color wheel are called complementary colors.
- The colors next to each other are called analogous colors.

Note that all of the classic aspects between colors can mixed together will cancel each other out. - Mix all the primary colors, all the secondary colors or all the Tertiary colors.

**One move acryl paint** – Creamy paints, especially for acryl nail arts. Be a miniature painter, compose unbelievable, inimitable nail arts for your clients. This will gain you to be a unique nail technician. Great covering, and slow drying acryl paints, give you enough time to make creative designs for your client's satisfaction. A unique product of Crystal Nails.

0,3oz:\$2.56



## Aquarell paint

Especially for light paints. Fresh, never fading colors, and easy application.

0,3 Oz: \$3.50



## Nail Wrap

The new Crystal Nails designer nail wrap range is designed to last up to 7 days on natural nails, taking just 15 minutes to apply. They won't chip or stain the nail and quicker to apply as no drying time required. Choose to embellish your nails with a vast choice of styles which can't be achieved with regular polish. Each kit comes in 20 different size, but can be pre-tailoring to ensure perfect fitting. Stick on labels. Coat with a regular top coat.

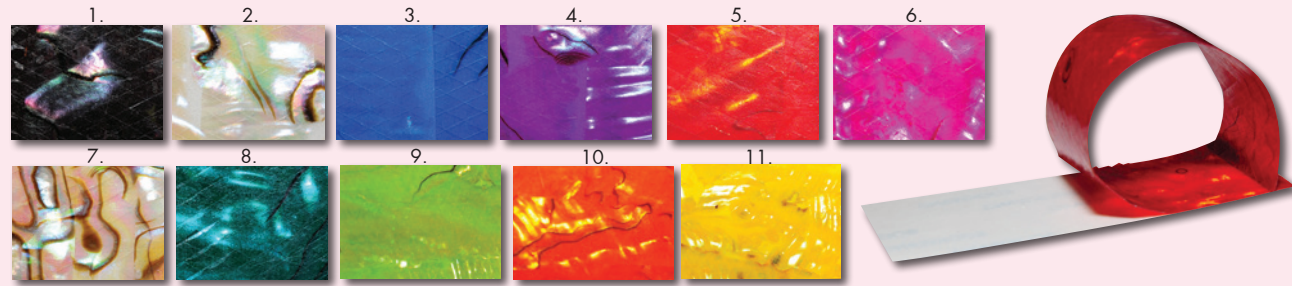
\$2.68





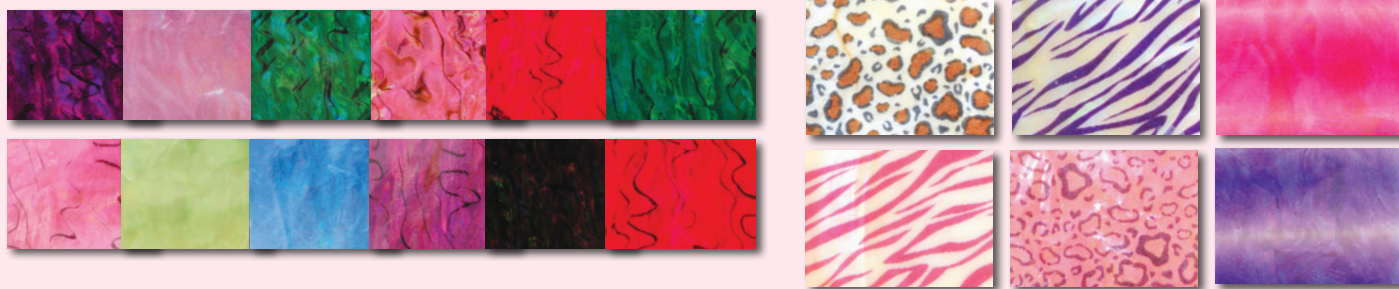
## Luxury Pearl sheet – Thin, flexible nail art. High quality.

\$3.90



## Flex pearl sheet – Flexible and shiny.

\$2.99



## Lacy Nail Art – glue on decal. \$1.50



## 18K Nail Art – Different lettering, and cool images. Available in gold, and silver. \$2.72



## Nail Art Hologram

– Easy to cut, and easy to place on. In 6 different colors.  
\$1.97



## Snake skin – We didn't kill animals for nail art. These thin pieces of the snake's already slough skin.

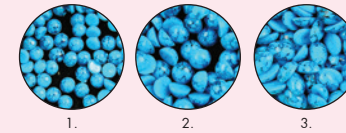
\$3.90



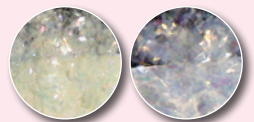
## Nail Art Drawer – Nail art painting was never easier. Just draw the designs like drawing with a pen. Red, yellow, green, purple, purple, pink, gold, silver, black, white colors. Keep it simple! \$3.86



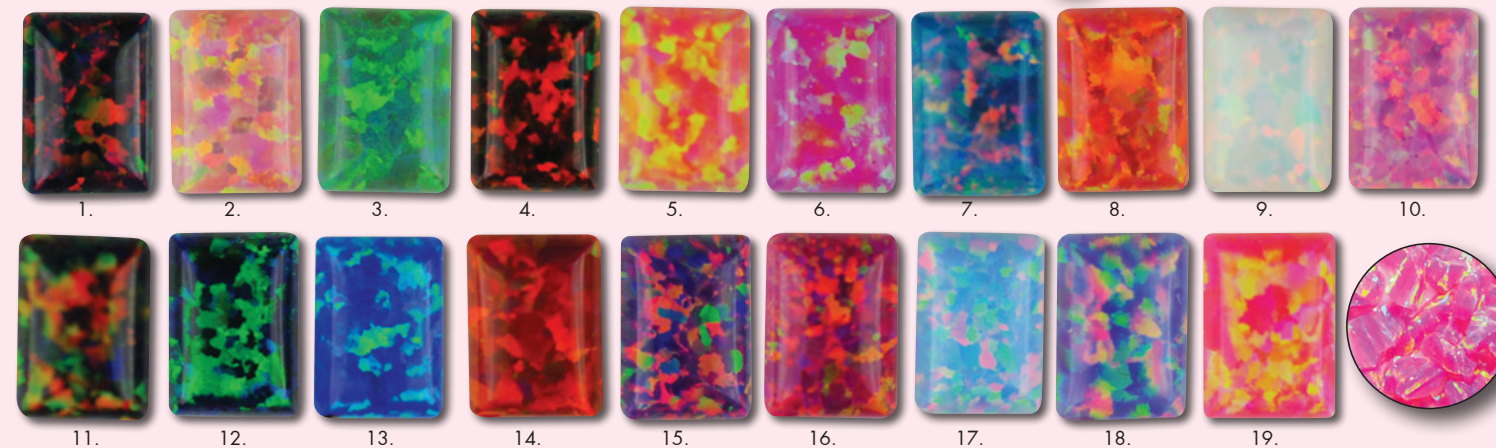
## Nail art stone Turquoise – 48pcs of turquoise stones. \$3.92



## Mica – Grounded minerals, with an amazing, special effect. \$3.92



## Crystal Opal – Grounded opals. Unbelievable impression, like jewels. Sissy queen's favorite was in the early 17th century. \$7.40







**Swarovski crystals. 14 facet Austrian Swarovski crystals. High Quality. Do not cover neither with top coat, nor top gels.**



CRYSTALLIZED™ – Swarovski Elements



## Swarovski crystals

In different shapes:

Square



\$1.97  
/10pcs

Star



\$3.15  
/10pcs

Flowers



\$3.15  
/10 pcs

Butterfly

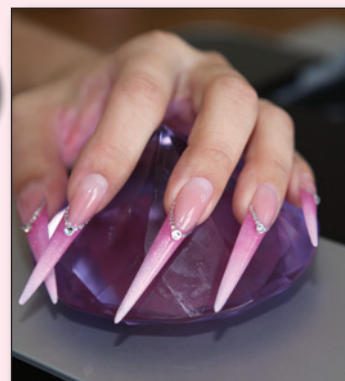


\$1.10  
/1pc

Round



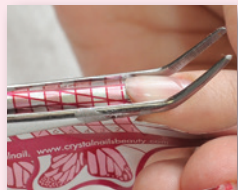
\$2.56  
/5pcs



CRYSTALLIZED™ – Swarovski Elements



**Mixing Spatula** A must be tool for colored gels, and nail arts. Stainless steel, washable, and may be disinfect. \$7.83



**Pinch tool** A must be tool for sculpted nails, to create beautiful C curves. Stainless steel, washable. \$7.80



**Dotting Tool** Helps to create detailed designs on nails with precision. Can be used for colored gel, acryl paint, regular nail polish, and Crystalac. Are you interested in our special nail design curses? Check out our "Step by step" hints, or click on the "Trainings" menu. \$7.80



**Fingernail nipper**  
Professional cuticle scissor, made by stainless steel.

\$4.72



### Professional cuticle scissor

The masters of manicures all know that a cuticle scissor needs to be Professional cuticle scissor, made by stainless steel.



### Cuticle scissor

For hard, thickened cuticles. Tip: For hard, and thick cuticles, use the Cuticle Remover to soften the non living skin before tailoring.

\$5



www.crystalnails.com

### Cuticle nipper

Stainless steel, ergonomic design ensures to push cuticle skin back on the nail plate. The other side is a safe scraper, to remove excess skin from the nail plate.

\$8.66



### Fingernail Clipper with long handle



### Pinch clip

A must be tool for nail championships, to bend the product into a beautiful C curves. Can be used for saloon work as well. Pinched saloon nails are favorites in Europe.

\$5.51

### Porcelain dish

Dish with a double wall. Keeps the temperature, ensure you to always get the correct liquid&powder mix ratio.

\$7.76



### Lint-Free Cosmetic Pads 500pieces

\$4.69



### Lint-Free Sponge Nail Wipes

Lint-free sponge wipes used to cleanse gel residue, nail polish, and more.

80pcs: \$4.96

### Business card holder – \$5.59



### Cotton gloves

\$2.72

www.crystalnails.com

### Brush Case with CN logo – be stored for 20 brushes

\$13.19





**Leatherette Brush case (pink, purple, black)**



\$9.45

**Brush case with photo frame (pink)**



\$12.99

**Exclusive Metal Accessories Kit**

Includes stainless steel pinch tool, Pro Cuticle Pusher, Dotting tool, Mixing Spatula, Tip Cutter, Cuticle Scissor, Fingernail Scissor. There are some extra spaces for files, and brushes (the file and the brushes are just illustration on the picture). In an exclusive, silver case.



\$53.94

**Manicure Tools Kit**

Includes Toenail Scissor, Fingernail Scissor, Cuticle Scissor, Cuticle nipper, Cuticle Pusher, Metal file.

\$30.71



**CN Color Palette (35 pcs)**

For demos, nail art, or practicing

\$3.46

**Nail Polish Display**

For 12 polishes: \$19.96  
For 30 nail polishes: \$77.95  
For 90 nail polishes: \$117.32  
For 180 nail polishes: \$129.92  
(Excluding lacquers)



**C curve bending set**

To create nice C curves, pinched nails. Also for saloon work. Include 6 pcs of different sizes.

\$15.35



**Mixing Palette**

\$2.20



**Wooden Stick**

\$0.16



**Arm Rest (pink, and white)**

\$7.36



**Corrector Pen**

\$4.61



**Liquid pump (Plastic)**  
\$3.90

**Manicure bowl (clear, red)**

\$3.15







**Exclusive Crystal Nails tapered T-shirt with real glitters black**  
\$11.92



**CN Fashion Extravagant Salon Top**  
\$19.29



**Half sided Top**  
\$14.76



**CN T-shirt White Exclusive LARGE with metal foil and real crystals**  
\$23.54



**Crystal Nails shirt (long-sleeved)**  
From \$11.92



**Crystal Nails T-shirt**  
\$11.92



**I LOVE Nails Top**  
\$15.55



**Fashion Top with hood**  
\$15.55



**Top with rainbow logo**  
\$18.90



**Apron Hot Pink**  
\$13.19



**Apron White**  
\$13.19



**CN Fashion Jeans look Street leggings**  
\$17.52



**CN Fashion Pants**  
\$21.65





# CRYSTAL FASHION

*Crystal Fashion*  
couture salon's boutique

*Crystal Fashion*  
couture salon's boutique

# CRYSTAL FASHION



**CN Phone Holder velvet bag**  
Available in Pink, and black

\$5.13



**CN waist warmer**  
(pink, black)

\$9.84



**Crystal Nails Apron**  
Pink

\$17.32



**Crystal Nails Apron**  
-Exclusive black with crystal

\$22.83



**Guest pillow to chair**  
\$3.90



**CN Beach Ball**  
\$1.54



**Tea Cup**  
\$3.86



**CN fashion leggings**

**CN WatchCrystal Nails Terry Towel**  
\$6.22



**White Towel with CN logo**  
\$3.66



**CN Watch**  
The latest trend, with Swiss structure. Available in purple, red, pink, white  
\$21.26







# UV AND LED LAMPS

## Crystal Nails Lamp

Nicely designed, strong (4x9W) UV lamp. Includes ventilation system, timer, and a digital dashboard. Available in pink and black colors.

\$77.95



## UFO UV Lamp

The best-seller UV Lamp in Europe. Comes with two 9W bulbs, and mirrors in each side inside. Produce less heat, and less noise.

\$35.04



## Euro UV Lamp

9W UV Lamp. Great for pedicures, or for travelling.

\$29.59



## UV Bulb 9W \$6.89



# DRILLS AND BITS



## Xtreme Drill

The first electric file manufactured specifically for the nail industry, the CN Xtreme Drill comes with a built-in foot control jack that allows for an optional foot operated speed control. When utilized the pedal provides fluid hands free speed control. The handpiece is made of stainless steel, and features a twist-lock chuck, making changing bits quick and easy. The control box allows nail technicians to choose between forward/reverse modes and has a variable sliding speed control that reaches 30,000 RPM.

Included: Handpiece, rubber handpiece cradle

One year Limited Warranty Included!

\$196



**Travel Drill** – Ultra light handpiece, 15,000 RPM, no speed control.

\$53.97



## Diamond Bit – Football Large

Great for cuticle work, and clean the free edge underneath

\$4.33



## Diamond Bit – Football Small

Great for cuticle work

\$4.33

## Sanding Bands

\$0,18

Rough, Medium, Fine



## Carbide Bit – Large Barrel (Gold)

This bit is used for surface work, shortening and backfill cutting. The only difference is the size of the circumference of the bit and tech preference.

\$14.96



## Diamond Bit Cylinder

This slim longer tapered bit can be used under the nails as well as at the cuticle or sidewalls.

\$6.89



## Carbide Bit – Small Barrel (Gold)



## Diamond Bit Slim

Thin, shank diamond bit. Diamond Bits are made with a Stainless Steel shank that adhesive is applied and rolled into diamond particles. You can get right underneath all those tight spots to gently bevel the undersides of the nails smooth without cutting the fingertip.

\$5.12



## Diamond Bit Kit

With 6 different diamond bit, a mandrel, and sanding band rings.

\$35.24





## Beauty Case (big)

Strong shaped, and easy to clean.  
Available in pink, purple, turquoise.

\$74.41



## Beauty case (small)

\$15.55



## Beauty case (maxi)

Can be opened for 3 separated rooms. Wheels, and a handles - ideal for travelling. Strong shaped, and easy to clean. Available in pink and purple.

\$136.61



## Beauty case (maxi) Bobby B)

Outside is fashion, inside is profession. The latest designed feminism cases, with the classic boxes of nail products. Let make your friends jealous.

Black: \$64.96  
Leopard: \$68.90



# Crystal SPA

Feet & Hands

High quality, German products with innovative consistencies, active substances, and vitamins.







## SPA Antiseptic Soap

Without color, and essence formulas. Antiseptic, hypoallergen. Kills all pathogens, and helps prevent infections. Drop a small amount to the pedicure bowl, and soak the feet for at least 3 minutes. Or use like a regular hand soap, wait for 30 seconds and then rinse with warm water.

1oz: \$1.77  
6,76oz: \$5.51  
17oz: \$10.83



## SPA SALT

Contains death sea salts, and aloe Vera essences. Soften, and cleanses the skin, and the calluses. Eliminates smells, pathogens, and fungi. Use a spoon amount for a pedicure bowl. Available in lime, tangerine, and mint flavors.

11,3oz: \$7.92



## Antiseptic Spray

An effective hand- and foot sanitizer. Hypoallergen. Spray before, and after the services.

1oz: \$1.54  
6,76oz: \$3.80



## Callus Remover Drops

Active callus remover, for the toenail's calluses, and any part of the feet.

1oz: \$4.72



## EXFOLIATING SCRUB (AVOCADO)

Contains jojoba oil, avocado essence, and sea weed. Scrub the calluses, and the top skin layer, with dead skin cells. Softens, and cleanse the skin. Use before pedicuring, after soaking. Rinse with warm water.

8,5oz: \$11.22



## SPA Salt-Oil-Menthol Scrub

Contains menthol- sweet almond- and peach oils. Moisturizes and freshening dry skin. The salt cleanses the skin pores, to help the vitamins, and oils penetrating.

1oz: \$3.35  
6,76oz: \$11.42

Brand new



## Crystal Peeling Gel

Contains fresh vitamin capsules. Contains Aloe, Vitamin-E, and Panthenol. Hypoallergen. Rich in amino acids, enzymes, and minerals. Moisturizing, tightening, and anti-aging. Contains antioxidant Vitamin-E capsules, which are penetrating deeply in the skin.

1oz: \$2.17  
6,76oz: \$7.68  
17oz: \$14.96



## Callus Softener Spray

Use during the pedicure, when buffing calluses, if you ever feel the feet dried out. Helps moisturize the skin, and softened calluses.

1oz: \$2.17  
6,76oz: \$7.28  
17oz: \$12.99







## Skin Butter

Luxury of feet care. Contains Shea butter, pomegranate, green fig, and Aloe Vera. Pampering, and deeply hydrating hands and feet. Not stringy, perfectly penetrate, rich butter. Shea butter is chemically close to the human body's protection emulsion. Softens, and protect dry skin.

1oz: \$2.76  
6,76oz: \$11.42  
17oz: \$23.23



## COOLING MASK WITH PAPAYA

Deeply penetrate to the skin. Contains mint, to refresh the feet.

8,6oz: 11.40



## SPA Skin Repair

Active softener for dry skin, or really thick calluses. Reach moisturize and softening effect, with vitamins, avocado essence, and silk. Repeated application eliminates calluses, and softens the feet.

1oz: \$3.54  
6,76oz: \$14.17



## PURE MOISTURE LOTION

Refresh, and rebuild dry skin. Perfectly penetrate, without left any cream on the top of the skin.

Available in Jasmine, Lavender, and Lilly scent.

8,45oz: \$7,92



## Cooling Gel

Contains mint and eucalyptus oil, to refresh the feet. Aloe Vera essences deeply moisturize the skin.

1oz: \$2.17  
6,76oz: \$6.69  
17oz: \$13.78



## Heat Balm

Contains lavender, rosemary, ginger, and camphor. Speed up blood circulation, and heating the hands, and feet. Urea, avocado oils, and Aloe Vera moisturizes the skin. Do not use on damaged skin. Avoid eye contact.

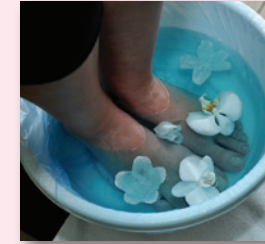
1oz: \$3.35  
6,76oz: \$13.39







**SPA Paraffin wax** in lavender, orange, peach, rose, jasmine, and tee tree. 16oz: \$6.10







# CRYSTAL NAILS EDUCATIONS



## Crystal Nails techniques (workshop)

Introduce the Crystal Nails products.

Demo: P&W acrylic nail sculpting with nailbed extension, and pinching. You never imagined how quick and easy to sculpt saloon nails with nailbed cover fades, and beautiful C curves.

Demo: P&W gel nail sculpting with nailbed extension, and pinching. Time saving tips and tricks.

Demo: Easy colored gel nail arts, and colored free edges

Demo: Easy colored acrylic nail arts, and colored free edges

## Basic technical training Gel

- How to performance a perfect prep? Forget lifting, and peeling. The secret is in the PREP techniques.
- The perfect form application. Helps to create beautiful C curves, and to create the nail shape structurally well to prevent cracking, and breaking.
- Quick, perfect saloon nails sculpting
- The latest nail trends: pink&whites with nailbed extension. How to perform never outgrowth, invisible pink&whites?
- How to pinch the nails for a beautiful C curve? In Europe, every nail extension service comes with pinching.
- Time saving tips. Avoid the unnecessary steps.
- Square, and almond shapes
- How to schedule perfectly, to fill every minute with work. Time saving tips.

## Basic technical training Acrylic

- How to performance a perfect prep? Forget lifting, and peeling. The secret is in the PREP techniques.
- The perfect form application. Helps to create beautiful C curves, and to create the nail shape structurally well to prevent cracking, and breaking.
- Perfect mix ratio
- Quick, perfect saloon nails sculpting: square, and almond shapes

- The latest nail trends: pink&whites with nailbed extension. How to perform never outgrowth, invisible pink&whites?
- How to pinch the nails for a beautiful C curve? In Europe, every nail extension service comes with pinching.
- Perfect finishing
- Time saving tips. Avoid the unnecessary steps.
- How to schedule perfectly, to fill every minute with work. Time saving tips.

## New Manicure Techniques

- Crystalac: the gel polish. How to create long lasting, perfect gel polishes?
- Quick, and easy gel polish nail art
- Manicure Tip: how to create perfect pink&whites quick and easy? (For natural nails only)
- The latest manicure trends: pink&whites with nailbed extension. Camouflage the nailbed problems on the natural nails. Invisible regrowth, thin coating.
- Easy Off techniques: quick manicure services with soak off gels.
- Quick, and easy gel nail arts

## Nail Art courses

Coming soon.

For the next nail art course ask for your local distributor, or the manufacturer on [www.crystalnails.com](http://www.crystalnails.com)



## Elite Cosmetix LLC

30011 Ivy Glenn Drive  
Laguna Niguel, CA  
92677

Phone: 949 280 98 26

Fax: 949 429 54 61

email: [info@crystalnails.com](mailto:info@crystalnails.com)

web: [www.crystalnails.com](http://www.crystalnails.com)

Follow us on FB: [www.facebook.com/crystalnailsusa](http://www.facebook.com/crystalnailsusa)

Videos: <http://www.youtube.com/crystalnailsinc>

Twitter: @crystalnailsus