

Miss World Hungary 2024



Crystal Nails®

2024 FALL/WINTER

2024 FALL-WINTER *Trend colors*

Scarlet Smile

Scarlet Smile is a deep, rich burgundy shade that has dominated the fashion world in recent years. A chic, truly passionate and versatile shade of vibrant red that instantly captures the eye. This color symbolizes energy, confidence and passion. Its rich color makes it popular, especially in the cooler months and it looks particularly good on a variety of skin tones. Perfect for those who want to add a little extra elegance and passion to their look.



NEW! HF3S17
Scarlet Smile



NEW! RT23
Scarlet Smile



NEW! GE52
Gel Effect Nail
Lacquer

Pinecone

Pinecone is a warm, earthy shade that reflects the beauty and peace of nature. This color radiates warmth, naturalness and elegance. That is why it is so popular during the autumn and winter seasons. These shades can be easily combined with other natural tones. Perfect for those who prefer a natural, harmonious look.



NEW! HF3S16
Pinecone



NEW! RT24
Pinecone



NEW! GE51
Gel Effect Nail
Lacquer

Miss World Hungary 2024



Nails: Ágnes Sebestyén
Photographer: Vivien Borzi
Model: Andrea Katzenbach (Miss World Hungary 2024)
The nail set was made with Sens Builder Gel Cover Nude, the new Sens Builder Gel Cover Nude shade. HF3S15, HF3S16, HF3S09 with the new 3 STEP CrystaLac, the new Sens Stream Gel and Nova Crystal rhinestones.

BRAND NEW!

Sens Flash **FLASH** (Reflective) Milky Rose Builder Gel

A brand new builder gel has arrived
in the SENS product line!

Flash Milky Rose Builder Gel contains the **light-reflecting glitter** known from the Flash 3G polish collection, which, **when intense light is projected onto it, sparkles like thousands of little stars**. This material provides a fine, solid and elegant nail wear, while its exciting shimmer appears when it is exposed to strong light. Self-spreading, filing-free builder gel with secure adhesion. Curing time in UV 2-3 minutes, in LED 1-2 minutes (depending on the strength of the lamp).

4ml
12ml
40ml

Density: ●○○○○



Free of Di-HEMA,
HEMA and TPO
components.



New!
Milky rose

Daylight

Strong
light



Sparkling milky rose

The nail set was made with the NEW! Compact Pro Base & Builder Gel and the NEW! SENS Flash Milky Rose Builder Gel (by Roxana Sárközy - Eigner).



"SENS Flash Milky Rose Builder Gel is an easy to use gel that provides a beautiful milky rose shade. Its special feature is that it contains the edge-reflecting mica known from the Flash 3G polish collection which shines differently like a diamond when exposed to different light effects. Its excellent adhesion and durability make it an ideal choice for building and strengthening gel nails."

Barbi Újvári, SENS by Crystal Nails ambassador

Brandnew Sens 3D Stream gel



You will be able to create one of the hottest decorations of the season with the brand new, non-cleansing clear decoration gel! Now you can easily create really trendy **3D wave shapes on the surface of the nail** with an ombre brush, then rub them with **any ChroMirror powder** for a spectacular result!
Curing time in UV 2-3 minutes, in LED 1-2 minutes (depending on the strength of the lamp).

5ml



New
Stream gel
Covered with ChroMirror
powder (Long waves)

Free of Di-HEMA, HEMA
and TPO components.



With many small waves



"With this new, innovative decoration gel, you can make your guests' nails special in no time. Anyone who likes chrome powder decorations will love this material. You can create a special surface effect with just a few moves."
Virág Halász, World Championship Bronze Medalist, Olympic Champion; Dublin Triple Gold Medalist, Certified Manicure and Pedicure Technician.



Shiny waves

The nail set was made with Xtreme Fusion AcrylGel Candy Floss, the NEW SENS 3D Stream Gel and ChroMirror Chrome Powder - Fine Aurora Sun (by Virág Halász).

sens by Crystal Nails®

New Colors!

HEMA FREE 3 STEP

CrystaLac fall-winter

TREND colors

This fall, shades of **burgundy (HF3S17)** and **coffee (HF3S16)** will be the trend colors! These will look fantastic in combination with light **nude (HF3S15)** shades. And if you're looking for something really special, don't miss the HF3S18, the **same color as the old favorite 1S77**, which is guaranteed to brighten up your look! And our HF3S Pumpkin shade, available from October will be a real must have color for the Halloween season.

Curing time: 2-3 minutes in UV lamp, 1-2 minutes in LED (depending on the strength of the lamp)

4ml
8ml



New!
HF3S15
Moonlight



New!
HF3S16
Pinecone



New! HF3S17
Scarlet Smile

Free of Di-
HEMA, HEMA
and TPO
components.

NEW COLORS!



New!
HF3S18
Hibiscus
charm



New! HF3S
Pumpkin

From October!



LIMITED!

Fall in Love 3 STEP CrystaLac collection

The Fall in Love kit shines in the colors of nature, where burgundy shades and earth tones create a harmony like the embrace of loving couples in the midst of autumn leaves. The box can be converted into a display.

4x4 ml



New!
HF3S15
Moonlight



New!
HF3S16
Pinecone



New! HF3S17
Scarlet Smile



New!
HF3S18
Hibiscus
charm



NEW

LIMITED!

Scarlet smile

The nail in the picture were made with the NEW! Hema Free 3 STEP CrystalLac HF3S15 - Moonlight and HF3S17 - Scarlet smile and the NEW SENS 3D wavy gel (by Mona Majnik).

New HF3S17
Scarlet Smile

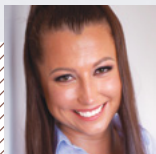
New! HF3S
Pumpkin

New!
HF3S16
Pinecone

New!
HF3S18
Hibiscus
charm

New!
HF3S15
Moonlight

Crystal Nails®
FALL IN Love
3 STEP CRYSTALAC COLLECTION
Crystal Nails®
3 STEP
CrystalLac®
HF 3S18
Crystal Nails®
3 STEP
CrystalLac®
HF 3S16
Crystal Nails®
3 STEP
CrystalLac®
HF 3S17
Crystal Nails®
3 STEP
CrystalLac®
HF 3S15



"If I had to describe the seasons in one word, I would say autumn is the season of variety. Everyone can find something to suit them from browns to reds and burgundies in our wide range of autumn 3 STEP shades. These colors are perfect addition to anyone's autumn outfit."

Edina Sikari

NEW packaging! 8ml

Hema Free 3 STEP CrystalLac

The colored materials of our creamy, well-covering, long-lasting HEMA FREE product line, which appeared in the spring, will now be available in a more economical 8 ml packaging! In the fall season the nude shades and red colors will be absolute guest favorites alongside the white and black base colors that cover in one layer, but of course the lovers of pink will also find the shades they like. The CrystalLac material offers the durability of color gels with the ease of lacquering. It spreads softly. It cures sticky, so it has to be covered/cleansed.

Cure in a UV lamp for 2-3 minutes, in an LED lamp for 1-2 minutes (depending on the strength of the lamp)

4ml
New 8ml



NEW PACKAGING



New!
HF3S01
White



New!
HF3S02
Black



New!
HF3S03
Red



New!
HF3S04
Coral



New!
HF3S04
Babypink



New!
HF3S06
Barbie pink



New!
HF3S07
Pastell
purple



New!
HF3S08
Pastell blue



New!
HF3S09
Nude



New!
HF3S010
Dark nude

Free of Di-
HEMA, HEMA
and TPO
components.



New!
HF3S04
Coral



New!
HF3S08
Pastell blue



New!
HF3S01
White

Shiny purple

The nail set was made with Hema Free 3 STEP CrystaLac HF3S07 and the NEW! Glam Glitters (N05) (by Virág Halász).



New!
HF3S06
Barbie pink

New!
HF3S07
Pastell
purple

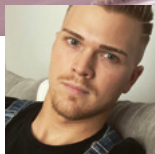
New!
HF3S04
Babypink

New!
HF3S02
Black

New!
HF3S03
Red

New!
HF3S010
Dark nude

New!
HF3S09
Nude



When the hema free range appeared on the market this spring, it gave a lot of nail professionals a new opportunity, because being sensitive to these components is a serious and real issue among customers. With these shades no one has to give up sophisticated nails. There are so many beautiful shades, so I think the 8ml versions are must have products in the salon.

Peter Kendik, Crystal Nails Ambassador

Brandnew

Compact Pro Base & Builder gel (Hema Free)

The newest member of our Compact product line has arrived. The **new HEMA FREE Compact Pro Base & Builder gel** has even more secure **adhesion**, is a slightly thicker material, but can be controlled with a brush. It can be perfectly used for **M-length nail extension** (with nail form), **C-curve, nail strengthening** and it also can be used as a **base layer**.

4ml
8ml
13ml

Thicker

Stronger adhesion

Can be used for M-length nail extension on a nail form

Free of Di-HEMA, HEMA and TPO components

BRAND NEW



New colors

Royal Top Gel

COLOR AND TOP IN ONE!

Four brand new autumn shades in the Royal Top Gel product line that works as a 2:1 color and top! The autumn collection of Royal Tops represents timeless elegance. **From the light peach color of Indian summer and mauve shades to darker tones**, everyone can find their new favorite. The Royal Top Gel is a creamy, easy spreading material, the softer version of Royal Gels, in bottle packaging, which will become the new favorite of professionals. **It covers in one layer**, so it is faster to work with. It will be a pleasure to apply the colors to the nail surface. **Non-cleansing, non dissolving**, colored gel in a bottle.

Curing time in UV 2-3 minutes, in LED 1-2 minutes

4ml

CN Advice: You can enhance its shine with top gel. In essence, it can be used on any base, but in case of gel polishes only on base gels used for the strengthening technique.

CN Advice: You can enhance its shine with top gel. In essence, it can be used on any base, but in case of gel polishes only on base gels used for the strengthening technique.



New! RT21
Peach
cream



New! RT22
Hollyhock



New! RT23
Scarlet Smile



New! RT24
Pinecone

NEW COLORS



Peachy rose

The nail set was made with the NEW! Royal Top Gel RT21 - Peach Cream and the NEW! RT22 - Raspberry Rose, decorated with SENS Metallic decor gel - Mirror Silver (by Edina Sikari).



New! RT21
Peach
cream

New! RT23
Scarlet
Smile

New! RT24
Pinecone

New! RT22
Hollyhock



"The newly launched Royal Tops come in true autumn colors. Every guest is guaranteed to find their favourite, plus they make our salon work easier."

Roxana Sárközy-Eigner, Manicure and Nail Design Educator

Limited!

New! Hand, foot and body lotions

Mystery and Mirage

SKIN CARE CREAM CONTAINING JOJOBA OIL, COCOA BUTTER AND VITAMINS WITH ROSEMARY AND ALOE VERA EXTRACT.

Let our **Mystery** cream take you to a mysterious world where elegance and sophistication meet. This **perfume scented hand cream deeply moisturizes your hands, feet, or even your entire body**, while adding a touch of mystery to your everyday life. Discover the candy dream world provided by Mirage! This cream tempts you with a sweet, playful scent that evokes the fondest memories of childhood. Let yourself be carried away by nostalgia and make Mirage a part of your daily skin care routine!

30ml
250ml



Limited!

New! Nail care oil

Our novelties include two special nail care oils that not only care for the skin, but also enchant your senses. Our **fantasy oil exudes a sweet and feminine scent with notes of jasmine and iris flowers**, as well as sweet fruity aromas. Our **Dream oil takes you to a luxurious dream, where sensuality meets playful notes**, especially dominated by spicy cherry and sour cherry.

4ml





New colors! Glam Glitters

The NEW, impressively sparkling Glam Glitters collection debuts in 4 dazzling shades for the fall season. The glitters evoking the colors of autumn create an incomparably bright effect.

CN Advice: Press it into the sticky layer or mix it with Compact Base Gel Clear or Compact Base Gel PLUS Clear and apply it to the surface of the nail. Because glitter is never enough! Use a top layer for durability and comfort.



NEW COLORS



New Selection of crushed shells

A special selection of **crushed shells** debuts this fall season, which contains thinner shell pieces and more special shades than before. You can create exciting sets for your guests with the shell collection of **12 different shades**. Use it **built-in** and cover it carefully for durability and to avoid possible accidents. For built-in we recommend Xtreme Superior Builder Gel Clear, Compact Base Gel, Elastic Hardener Clear, Sens Base&Builder Gel Clear.



Brand new Autumn leaves mix

We have brought a unique selection of **12 types of leaves** for the lovers of this season! You can create a real autumn atmosphere on the nails of your guests with these decorative leaves. **Use them built-in with** Xtreme Superior Builder Gel Clear, Compact Base Gel, Elastic Hardener Clear, Sens Base&Builder Gel Clear.





Shiny shells

The nail set was made with SENS Builder Milky Rose, the NEW! Selection of crushed shells and the NEW! Glam Glitter (N08) (by Edina Sikari).

Brand new Platinum Cuticle Scissors

Working with our new Platinum cuticle scissors will be a real pleasure thanks to its unique features (swallowtail design, pointed edge, and oval handles). In order to be able to use your metal tools for as long as possible, please follow our care recommendations. The correct procedure for disinfecting metal tools: Clean the metal tool from organic contamination (dust, pieces of skin, etc.). You can clean it manually under warm water with a nail brush or with Crystal Nails Xtreme PRO Ultrasonic cleaning machine. Wipe the tool dry. Spray the tool with a special disinfectant for tools. The disinfectant should apply to all used surfaces of the tool. Wait the time required for the disinfectant to take effect. Thoroughly rinse the disinfectant off the metal device with water. Wipe the device dry and put it in its storage place. Never allow the disinfectant or water to dry on the tool, as this may damage its quality.



New colors! Gel Effect Nail Lacquers

Gel Effect Lacquers provide perfect coverage, as if you just stepped out of the salon. They are made in harmony with the shades of gel polish of the fall season, so they are a perfect choice if you want to change the color of your nails to your mood. These four beautiful shades are guaranteed to brighten up your everyday life! Give your hands a little luxury, choose stylish colors for every occasion!

10ml



Blue elegance

The nail set was made with the NEW 3STEP CrystalLac HF3S15 - Moonlight and 3S45 shades, decorated with the NEW! metallic stickers (CN-14) and SENS Metallic decor gel - Mirror Silver (by Dóri Kesztyűs).

Brand new Xtreme Fusion *A* Pro brush

BRUSH WITH SPATULA FOR XTREME FUSION ACRYLGEL

We have brought an improved version of our Xtreme Fusion brush, specially designed for filling salon-sized nails. Similar to its previous model, one end has a practical stainless spatula, while the other end has a brush with rounded bristles. Thanks to the width of the brush, it is easy and quick to work with, and the length of the bristles also allows the material to be nicely smoothed over the nail surface. It is not only visually stunning, but working with it is a real experience!



New Nail Stickers

Discover the magic of autumn on your nails with our new, stunning nail stickers! In this fall season, we have brought the trendiest colors and patterns of the season. Two self-adhesive sheets (CN-12, CN-13) which were created in the spirit of autumn trend colors, as well as two thin, metallic-effect sheets (CN-14, CN-15) that will be perfect accessories for the season if you want an elegant and sophisticated look.

CN-12

CN-13

CN-14

CN-15



Brand new Easy On Gel Tip Glue

ADHESIVE GEL FOR GEL TIP BOXES

Brand new adhesive gel for gel tip boxes! The new bottle-packaged Gel Tip Glue can be easily applied to the surface of the tip with the help of a brush, as it has a softer texture than its jar version, but is still thick enough to fix the tip to the nail bed during the curing time.

It comes in two shades, a clear and a lovely warm nail bed shade Cover Nude which is pigmented enough to extend the nail bed so it will look great with a french free edge too!

8ml



Free of Di-HEMA, HEMA and TPO components.

CN Advice: Use with our No Limit lamp!



New Clear



New Cover Nude

Crystal Nails Calendar cover 2025

WEEKLY SCHEDULED, 2025 CALENDARS, IN TWO DESIGNS.

Leaf and marble patterns, soft colors and clean lines that show femininity in every detail. It is a perfect choice for those who love beautiful things and for whom it is important to fill their everyday life with a little elegance and punctuality. They are made of super soft textile leather, with patent lock and a pen holder. Business cards and appointment cards can also be stored in its practical inner pockets! Due to their size (117mm x 185mm), they fit in most women's bags, so you can schedule your guest's next appointment at any time.

Calendar cover

Calendar interior



New Candy Pink apron

Modern and fashionable water-repellent apron in charming pastel pink color, with black inscription.

2024

BEST OF *Crystal Nails®*

This year, we've expanded our product selection with unique materials and exciting innovations. Let's take a look at the top favorites from the spring and summer seasons! Feel free to mix and match them with the new fall-winter arrivals that are now available!

THE LIST:



Crystal
 *Nails*®