



Crystal  
 Nails®

SPRING-SUMMER 2025



# TREND COLORS OF SPRING-SUMMER 2025

## CHERRY BLOSSOM

The Cherry Blossom shade brings the freshness of nature and a romantic atmosphere this spring! This beautiful, powdery pink evokes the delicate, romantic hue of cherry blossoms in full bloom, while radiating elegance and femininity. Cherry Blossom is the perfect choice for those who appreciate a feminine, refined style and wish to showcase the renewal of spring on their nails. Pair it with spring hues or pastel colors for the perfect harmonious effect!

## CAMELIA

The Camelia shade represents the perfect balance of elegance and freshness this spring. This soft, warm pink-peach hue evokes the delicate yet rich colors of spring, while radiating femininity and sophistication. Camelia is an ideal choice for everyday wear, but it also suits special occasions perfectly. The color pairs beautifully with pastels and neutral shades, giving a fresh and elegant appearance.








**Nails: Virág Halász**  
**Photo: Vivien Borzi**  
**Model: Karina Farkas**

The nail set was made with the new 3 STEP  
Aurora CrystalLacs, smile line stickers and  
NOVA rhinestones.



# NEW COLOR

 Video here



SPRING-SUMMER 2025



# NEW COLOR!

## SENS

## ACRYLGEL

*Sheer White*

Discover the newest color in the Sens Acrylgel family, now with a semi-opaque, milky white shade! This harder-type acrylgel is the perfect choice for achieving a natural, understated elegance. It is ideal for full coverage, as the delicate milky white color gives nails a beautiful, clean look. The Sens Acrylgel milky white shade is a perfect choice for everyday wear or as a base for wedding and special occasion nail art. Combine it with other colors or embellishments for a stunning effect! It has a homogeneous texture and fully cures to the desired height.

**Curing time:** UV/LED lamp 2-3 minutes, LED 1-2 minutes.

**27ml (30g)**



**New**  
Sheer white



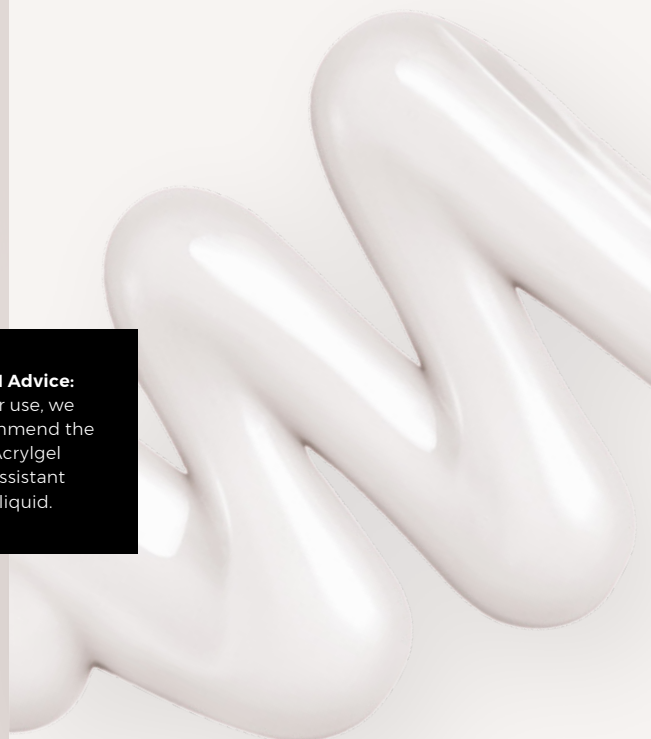
**NEW  
COLOR!**



### **Butterfly French**

The nail set was made with the NEW! SENS AcryGel in Sheer White and White shades, along with the NEW! nail sticker.  
(by Mónica Majnik)

**CN Advice:**  
For use, we recommend the Acrylgel Assistant liquid.





# BRAND NEW

## SENS FLASH<sup>+</sup>

### *Base & Builder Gel*

Following the stunning success of the FLASH Milky Rose builder launched last fall, the FLASH Base&Builder product line was born, taking the elegance and sparkle of nude shades to a new level. These milky-toned base gels contain delicate flash glitter that softly shines under normal light, while sparkling brilliantly in strong light or sunlight. The natural, understated color effect is the perfect choice for nude shade lovers who desire a little extra shimmer. This base and strengthening gel allows easy creation of the C-curve, and smaller (S) length extensions can also be achieved with it. It offers perfect adhesion, flexibility.

**Curing time:** 2-3 minutes in a UV lamp, 1-2 minutes in an LED lamp (depending on lamp strength).

10 ml



**New**  
Milky White

**New**  
Milky Rose

**New**  
Milky Pink

☀ In natural daylight


☀ In intense light  
☀

#### Sparkling Flower Garden

The nail set was created with the NEW! SENS Flash Base&Builder in Milky White, along with the NEW! nail sticker ( by Dóra Kesztyűs)



# BRAND NEW

 Video here



## FLASH<sup>+</sup>

SPRING-SUMMER 2025



NEW COLOR

 Video here





**NEW COLOR!**

# **XTREME SUPERIOR BUILDER GEL**

*Milky White*

The guest-favorite Superior, file-free builder gel, is now available in a beautiful, much-needed milky white shade that perfectly fits the elegant yet fresh vibe of spring! This stunning white color offers a sophisticated and clean look on its own, but if you're aiming for a truly special effect, combine it with the Superior product line's Cover shades, like Cover Pink, Natural Pink, or Milky Rose, to create dreamlike babyboomer sets.

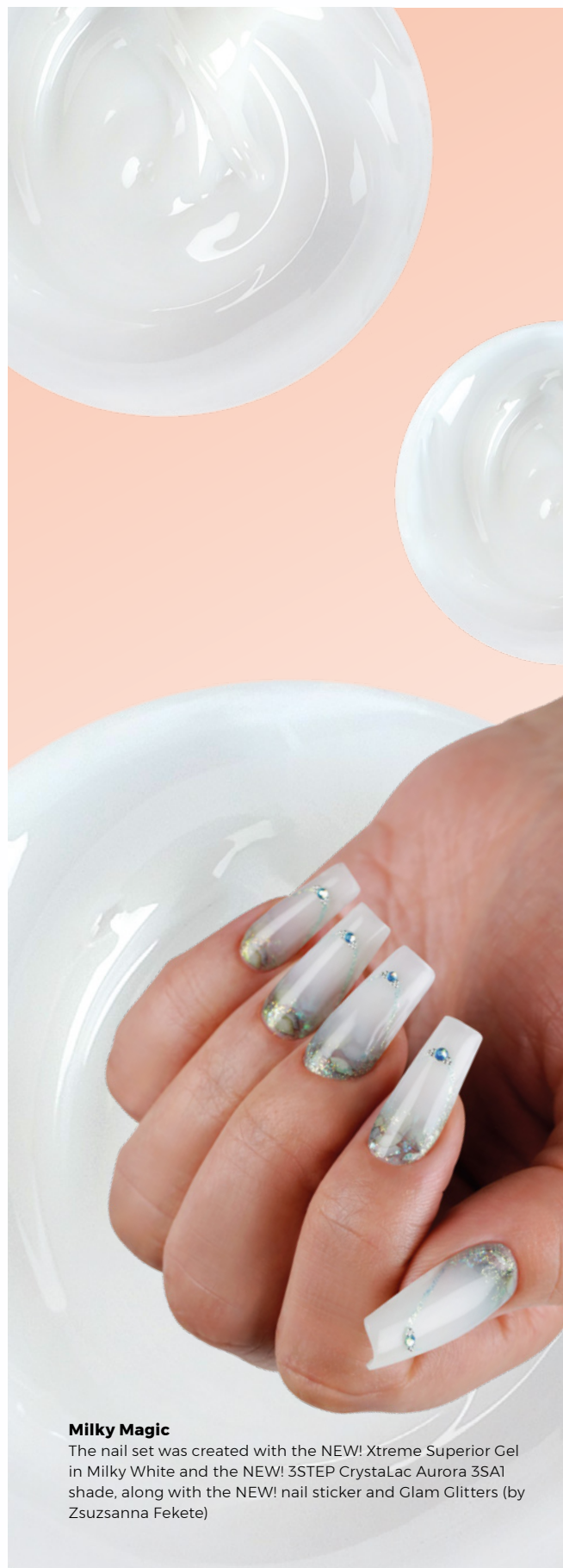
Thanks to the new, improved formula, the gel is even easier to work with, making every movement a pleasure.

**5ml  
15ml  
50ml**



Density: ●●●○○○

**New**  
Milky White



## **Milky Magic**

The nail set was created with the NEW! Xtreme Superior Gel in Milky White and the NEW! 3STEP CrystaLac Aurora 3SA1 shade, along with the NEW! nail sticker and Glam Glitters (by Zsuzsanna Fekete)



# NEW COLORS!

## 3 STEP CrystaLac

*Spring-Summer  
Trend Colors*

Bring the freshness of spring with the latest 3 STEP CrystaLac collection, inspired by the awakening of nature, capturing the magical colors of the season! Whether it's the gentle, tender green of 3S217, the fresh peachy shades of 3S219, or the soft coral of 3S220, everyone will find their favorite. One of the special pieces in the collection is the 3S218 pink, which revisits the iconic GL147 shade, enchanting once again. Get ready for the magic of spring, and dress your clients' nails in the glowing, nature-inspired colors!

Curing time: 2-3 minutes in UV, 1-2 minutes in LED.

4ml  
8ml



**New**  
3S217



**New**  
3S218  
Cherry Blossom



**New**  
3S219



**New**  
3S220



**Sparkling Camellia**

The nail set was created with the NEW! 3 STEP CrystaLac 3S220 - Camellia shade and Nova Crystals rhinestones (by Edina Sikari)

# LIMITED!

## Wildflowers

### 3 STEP CrystaLac collection

The shades inspired by the wildflowers of spring fields, all in one collection, presented in a display-friendly box.

4x4ml



LIMITED!

NEW

**The set includes:**  
New! 3S217, 3S218,  
3S219, 3S220



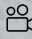
# NEW COLORS

 Video here





# Color of the Year 2025

 Video here



Mocha  
Mousse

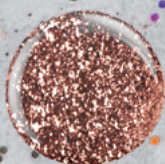
**PANTONE**



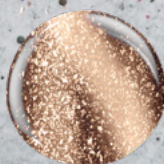
**HF3S10**  
Hema Free  
3 STEP Crystal Lac



**HF3S16**  
Hema Free  
3 STEP Crystal Lac



**3S208**  
3 STEP Crystal Lac



**HF3S10**  
Hema Free  
3 STEP Crystal Lac



**Nr41**  
2 STEP  
Smartgummy  
Rubber Base Gel



**RT14**  
Royal Top Gel



**N08**  
Clam Glitters



# NEW

## Color of the year 2025

### *Mocha Mousse*

The Pantone Institute has chosen Mocha Mousse as the defining fashion color of the year for global trends. This warm, rich brown shade evokes the delicate world of cocoa, chocolate, and coffee, radiating a soothing comfort and elegance. The color of the year, designed for the spring season, will be available in a stylish nude shade.

**Curing time:** 2-3 minutes in UV, 1-2 minutes in LED

4ml  
8ml



#### **Mocha Mousse**

The nail set was created with the NEW!  
3 STEP CrystaLac in the Color of the Year  
2025 Mocha Mousse shade.  
(by Edina Sikari ).



# LIMITED!

## Aurora 3 STEP CrystaLac

The Aurora 3 STEP collection captures the dazzling spring sunlight with its radiant glow. Use it on different bases to discover the playful nature of the colors. These magical CrystaLac shades provide excellent coverage on their own, creating a glass-like, softly shimmering effect. When applied over Milky Rose or Milky White bases, you'll achieve soft, color-shifting tones that evoke the freshness and delicacy of spring with a touch of sparkle. On darker bases, the collection reveals a more dramatic side, creating chameleon-like, captivating effects that will surely attract attention.

The Aurora shades perfectly complement the newly released 3 STEP decor colors, offering endless creativity and allowing the full blossoming of the spring mood.

**Curing time:** UV 2-3 minutes, LED 1-2 minutes.

4ml  
8ml



**New**  
3SA1



**New**  
3SA2



**New**  
3SA3  
Camelia



**New**  
3SA4  
Cherry Blossom



### Aurora Effect

The nail set was made with the NEW! 3 STEP CrystaLac Aurora Collection (By Virág Halász).

# LIMITED!

## Aurora

### 3 STEP CrystaLac collection

This set features all four stunning Aurora 3 STEP CrystaLac shades inspired by the mesmerizing colors of the Northern Lights! Create a springtime glow with these silky, shimmering shades. Easily craft impressive, unique designs that capture the season's freshness and radiance! The box can be transformed into a display!

4x4 ml



LIMITED!

NEW

**The set includes:**  
New 3SA1, New 3SA2,  
New 3SA3, New 3SA4





Video here





# NEW COLORS

 Video here



SPRING-SUMMER 2025



## NEW COLORS!

### Royal Top Gel

*Color and top in one –  
for use on artificial nails  
or on a base gel*

Discover the four brand-new spring shades in the Royal Top Gel product family, which can be used both as color and top in a 2-in-1 formula! The collection includes a must-have white shade (RT29), a perfect base for every style. You will also find a princess-like, romantic pink (RT30), which adds feminine charm and playfulness to your clients' nails, along with a unique, dried lavender tone (RT31) that exudes elegance and individuality. Last but not least, the soft Mocha Mousse nude shade (RT32) – the color of the year – is also part of the collection, perfectly fitting any style.

These shades are excellent choices to pair with any ChroMirror chrome powders!

4ml



#### Silver spring

The nail set was created using the new Royal Top Gel RT30 - Cherry Blossom and RT31 - Almond Blossom shades, along with decoration from the SENS Metallic Decor Gel (by Virág Halász).



**CN Advice:** You can enhance its shine even more by using a top gel. It can essentially be used on any base, but for gel polish manicures, apply it only on the base gels used for reinforcement.

**CN Advice:** If it settles or separates during storage, don't shake it due to its density. Instead, stir it with a decoration needle in the bottle.



New RT29



New RT30  
Cherry Blossom



New RT31



New RT32  
Mocha Mousse



# LIMITED!

## Hand, Foot, and Body Lotions

*Illusion, Secret*

A skincare cream containing jojoba oil, cocoa butter, and vitamins, with rosemary and aloe vera extract. Spring is the season of awakening nature, when the fresh scent of flowers and fruity aromas fill the air. Why not bring this feeling into your everyday life? Our new hand, foot, and body lotions offer the essence of the spring season: fresh, vibrant scents created from a magical blend of fruits, flowers, and warm woody tones. Our Illusion-scented cream features a playful, fruity fragrance, made irresistible by warm woody tones and sweet, soft notes. It's the perfect choice for those who seek a sense of lightness and confidence in a lotion. Another wonderful fragrance we offer is Secret, which is mysterious and seductive, radiating elegance and sophistication. It starts with fresh citrus notes, followed by a floral heart, and finally, deep woody tones embrace your senses. It's the perfect choice if you're longing for something truly special!

30ml / 250ml



New Illusion

New Secret

# LIMITED!

## Cuticle oils

*Desire, Affair*

Awaken your senses with our Desire and Affair cuticle oils! Desire's mysteriously passionate, sweet-spicy fragrance immediately captivates, while Affair is elegant and refined, evoking the mood of a sexy night. Both cuticle oils deeply hydrate and nourish the nail bed, leaving behind a magical, long-lasting scent cloud. Add a touch of luxury to your manicure and let the Desire and Affair oils pamper your senses!

4 ml



New Desire

New Affair









### **Velvety Peach**

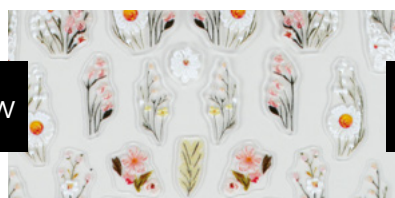
The nail set was created with the NEW! SENS Flash base & builder gel - Milky White, the NEW! 3 STEP CrystalLac 3S219 in the shades of Velvety Peach, along with the NEW! Glam Glitter in shade N15, and the NEW! spring nail sticker (by Dóra Kesztyűs).

## **New Nail Stickers**

Discover our new, stunning nail stickers, each adding a unique touch of magic to your nail art. We offer three beautiful designs: hand-drawn flowers with green leaves and inspiring quotes (CN-18) evoke freshness, spring bouquets (CN-19) bring a romantic vibe, and aurora-effect butterflies (CN-20) give a dreamy shine. The stickers are easy to apply, offering not only a beautiful but also a time-saving solution for nail decoration. They are guaranteed to make your nails dazzling for any occasion!



**New CN-18**



**New CN-19**



**New CN-20**



## New colors!

# Gel Effect Nail Polishes

The Gel Effect product line is expanding this spring with the Cherry Blossom collection! These delicate, romantic shades evoke the beauty of cherry blossoms. With Gel Effect nail polish, anyone can easily create a salon-quality manicure from the comfort of their home. The fuller, volumizing formula and stronger pigmentation perfect the nail painting experience. The creamy texture ensures easy application, while the moderately fast drying time and long-lasting wear guarantee that your manicure stays flawless for a long time. Available in beautiful, exclusive bottles with shiny silver lettering and matte silver caps.

CN Advice: Use our 2in1 Base & Coat product for base and coverage, or use the Gel Effect Top Coat, specifically developed for this product line, for an even longer-lasting result and to enjoy the beautiful finish on your nails!

10ml



## New Shades!

# Smile Line Sticker

Water-based nail sticker that allows you to quickly create an ombre-effect blurred smile line – featuring two neon pastel shades, perfect for spring. Cut the design carefully, soak it for a few seconds, then, using tweezers, place it on the surface of your nail and seal it with a top coat.



**New** French Line III.

**New** French Line IV.

## New

# Stamping Plates

Explore a new dimension of stamping with our Wild Spirit and Lines stamping plates! Wild Spirit features bold, daring animal prints, while Lines enchants with delicate lines and modern motifs. Join the latest trend and create nails that are sure to stand out!

**CN Advice:** Works perfectly with art gels or stamping polishes.



**New** Lines

**New** Wild Spirit





The nail set in the picture is created with the Press on Nail Tip - Red version.

## NEW Portable Brush Holder

Travel in style and stay organized with this special brush holder! The practical yet fashionable design ensures that not only your brushes but also your files and metal tools have a perfect place. Everything you need, all in one elegant case that not only organizes but also protects your favorite tools. Made of easy-to-clean faux leather. Size when unfolded: 43 x 23 cm.



## BRAND NEW Soft Drill Bit Holder

Travel in style and stay organized with this special brush holder! The practical yet fashionable design ensures that not only your brushes but also your files and metal tools have a perfect place. Everything you need, all in one elegant case that not only organizes but also protects your favorite tools. Made of easy-to-clean faux leather. Size when unfolded: 43 x 23 cm.





## NEW Press on nail tip

*Red, Babyboomer, White chrome, French wave, Aurora stream*

The package contains 30 tips to ensure that everyone can find the perfect size. It includes two types of adhesives – a double-sided adhesive for short-term wear (2 days) and a regular adhesive that allows the tips to stay on for up to 2 weeks. For long-lasting application, we recommend using base gel to avoid damaging the natural nail plate. The package also includes an alcohol wipe, a mini file, and a mini orange stick. The tips are reusable.



## New Replaceable File Core and Sandpaper

*100/10 pcs, 150/10 pcs, 180/10 pcs*

Hygiene and practicality in one tool! Our replaceable surface files are available in 100, 150, and 180 grit to meet every need. The durable file core easily accommodates any replaceable file surface, offering not only comfort but also an economical solution. One paper per guest – ensuring a clean and professional working environment.

The package contains 10 replaceable files. The core can be purchased separately!

File Core

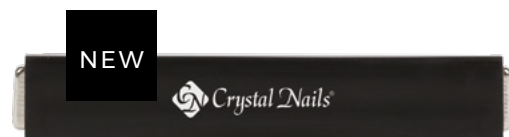
Package (10 pcs)



## NEW! Xtreme Force Magnet

A new, extra strong and super long magnet, the perfect tool for creating magnetic designs! The removable black plastic cover not only protects the magnet but also ensures comfortable and easy use. Thanks to its precise and durable design, you can effortlessly create any magnetic pattern, whether it's fine details or spectacular effects.

Size: 6 cm long.





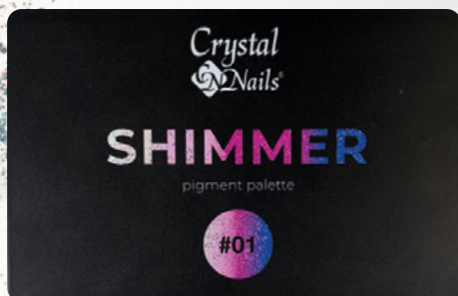




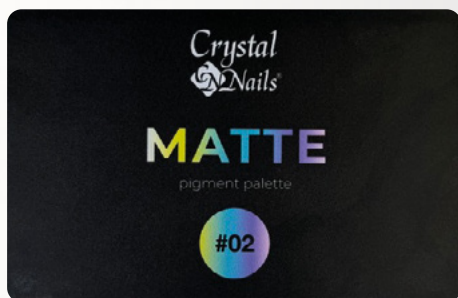
# BRAND NEW

## Pigment Palettes

Unleash your creativity with our pigment palettes! Choose from the sparkling shine of the glitter pigments or the elegance of the matte shades. You can use them in a slightly sticky layer (such as on Base Gels, 3 STEP CrystaLac, or 2 STEP® SmartGummy Rubber Base Gel), mix them with your favorite base materials, or explore new techniques – the possibilities are endless, it's up to you what you create.



**#01 Shiny**



**#02 Matte**

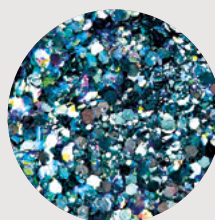
# NEW

## COLORS!

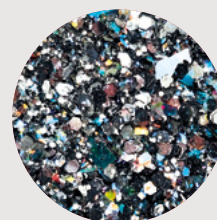
## Glam Glitters

The Glam Glitters collection has been enriched with new, enchanting shades that will captivate you in an instant! Discover the turquoise blue that evokes the depths of the ocean, the timeless elegance of soft grey, the gentle peach glow inspired by sunsets, and the romantic charm of powder pink.

**CN Advice:** Apply over a sticky layer, or mix with Compact Base Gel Clear or Compact Base Gel PLUS Clear, then apply to the nail surface. Because there's never enough sparkle! For durability and comfortable wear, be sure to use a top coat.



**New N13**



**New N14**



**New N15**



**New N16**



Samples made with  
Pigment palettes



Crystal  
Nails®

Glow everywhere  
in your style!

