

Crystal  
Nails® 





Crystal Nails 2020/2021

## INDEX

**3** | 2020 TREND COLOR

**4** | ACRYLGELS

**6** | BUILDER GELS

**22** | COLOR GELS

**31** | ROYAL GELS

**37** | ART GELS

**44** | 3 STEP CRYSTALAC

**60** | ONE STEP CRYSTALAC

**64** | ACRYLIC BUILDER POWDERS

**70** | ACRYLIC COLOR POWDERS

**74** | PREPARATORY AND ADDITIONAL LIQUIDS

**79** | NAIL POLISHES AND NAIL CARE

**88** | FILES

**94** | BRUSHES

**107** | FORMS

**114** | NAIL ART

**128** | ELECTRONICS BY CRYSTAL NAILS

**144** | ACCESSORIES

**152** | HAND AND FEET CARE





Pantone

Classic Blue

## The trend color of the year 2020

The Classic Blue of the color scale of Pantone has become the color of this year. This color will look gorgeous on our nails as well regardless of the seasons or any occasion. Take a look around the spectacular colors of the products of Crystal Nails!

*This blue,*  
looks good on everyone!



# ACRYLGELS



# CRYSTAL NAILS XTREME FUSION ACRYLGEL ACRYLGELS

THE UNIQUE ACRYLGEL IS A MEMBER OF OUR 'XTREME' PRODUCT LINE, WITH EASY AND TIMELESS FORMABILITY

**In five colors: the most popular Cover Pink, the brilliant Extra White, the transparent Clear, the perfect White which is perfect for Baby Boomer, and the gorgeous Transparent Pink for warmer shades.**

New generation, non-heating, Xtreme dense, perfect shaping and easy to file hybrid AcrylGel builder gel. During the sculpting, the controllability of the gel and the formability of the acrylic is almost characteristic. After curing, it will have the same flexibility of gel combined with the same strength of the acrylic. It can be filed easily after curing and cleansing.

The tube packaging provides cleaner working conditions. Accurate dispensing: a sufficient amount of the product is applied to the nail without any waste. Makes the sculpting faster compared to gels or acrylics. There's no need for base gel: use it with only cleanser.

Extremely easy to file: the work with this material is fast and sparing for the customer and the technician as well.

Recommended files: Xtreme 180/180 Green File, Classic 150/150 (Blue) Zebra File or the IronX 150/180 file.

It doesn't even lifting on the nails with cohesion problem, neither at sculpted nor the refilled nails.

It can be combined with any other builder product line of Crystal Nails.

Recommended top gel: Cool Top Gel Universal.

The application of this material is recommended with softer brush:

Nero Merlo I., CoverPRO Brush, Xtreme Acrylic brush, or any other natural (non-artificial), round formed brush.

Cure time

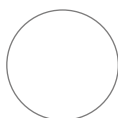
UV: 4-5 min

LED: 1-2 min

30g –

60g –

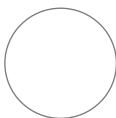
Thickness ● ● ● ● ● +



Clear



Cover Pink



Extra White



Transparent Pink



White



## TUBE SQUEEZER –

### FOR XTREME FUSION ACRYLGEL

We made this product for easier and faster salon work. Rollers made of aluminium so it is durable and long lasting. Suggested for Xtreme Fusion AcrylGel.

Using the squeezer prevents bubbling the gel after squeezing it out.







# BUILDER GELS

THE MOST IMPORTANT PARAMETERS OF THE CRYSTAL NAILS MATERIALS:

TOP QUALITY, UNIQUE  
REVOLUTIONARY CRYSTAL NAILS MATERIALS,  
LEADING THE NAIL TREND DEVELOPMENTS



## NEW! XTREME SUPERIOR GEL

### XTREME BUILDER GEL WITH CITRUS SCENT

A new generation of builder gels with a nice purplish tone which cures at lower temperatures due to its low heat generation formula. An easy-to-use crystal-clear Xtreme builder gel that provides fast work with its medium-density. Super-strong, flexible and still easy to file. It can be used as a builder gel for short and long nails as well.

Curving time UV lamp 20-25 sec, LED 8-10 sec.

Cure time UV: 2-3min, LED: 1-2min.

Thickness ● ● ● ● ● ●



5ml –  
15ml –  
50ml –



## XTREME CLEAR

### TRANSPARENT, THICK, SUPER STRONG BUILDER GEL

Top quality, dense, non-yellowing, purplish (UV filter and color brightening effect), hard, clear builder gel. It is the strongest Crystal builder gel, so it can be pinched and shaped very well. Extremely shiny and the cohesion is very good too. Perfect for extreme shapes and pinching. Can be used for the creation of both short and long nails. It cures fast because of a special accelerator material in it. It might cause burning sensation, so cure the nails fractionally: first 5 secs, then take the clients hand from the lamp for 5 secs, then cure it for 10 secs, then you can pinch it. This way it will not cause burning. Apply it with a firmer brush: Firm Gel or Nero Merlo III. brush.

Curving time UV: 10-15sec, LED: 5-8sec

Cure Time UV: 2-3min, LED: 1-2min

Thickness ● ● ● ● ● ●



5ml –  
15ml –  
50ml –



The most flexible gel for C-curve

Extreme strong nails for extreme usage.

## TITANIUM

### TRANSPARENT, MEDIUM THICKNESS, SPECIAL XTREME BUILDER GEL

Medium thick, blue-ish (in the jar), clear builder gel, with special consistency. Thanks for a secret ingredient, the material keeps itself together, does not flow around. It is very easy to spread it on the surface, but it keeps the sculpted shape very well, which permits a quick and precise work. Ensures maximal control, which is an essential tool of the quality work and with this builder gel you can easily make a C-curve. It can be used for the creation of both short and long nails. We also suggest it for the beginners. Apply it with a softer brush: 6 Gel brush, Xtreme Gel brush, Nero Merlo II. brush.

Curve time UV: 40-50sec, LED: 15-20sec

Cure Time UV: 2-3min, LED: 1-2min

Thickness ● ● ● ● ● ●



5ml –  
15ml –  
50ml –



Unique formula, special ingredients.  
Building c-curve in a minute.

## COOL GEL

### CRYSTAL CLEAR, XTREME **BUILDER GEL** WITH REDUCED HEAT GENERATOR FORMULA

New Generation of the builder gels, developed for the nail technicians and salon work. This gel has a low heat formula and it's curing in lower heat.

Curving time UV lamp: 20-25sec, LED 8-10sec

Cure time: UV lamp: 2-3min, LED: 1-2min

Thickness ● ● ● ● ●



5ml –  
15ml –  
50ml –



## BUILDER CLEAR II.

### TRANSPARENT, SOFT **BUILDER GEL**, CRYSTAL-CLEAR BUILDER GEL.

Soft, crystal-clear builder gel. It can be used for decorating the surface and making any other decorations. Recommended for natural length nail. It cannot be curved. For this soft gel we recommend that you use softer brush: Xtreme Gel brush, Gel brush 6, or Nero Merlo II. brush

Cure time UV: 2-3min, LED: 1-2min

Thickness ● ● ● ● ●



5ml –  
15ml –  
50ml –



## COOL (REMOVE) BUILDER GEL CLEAR

### THE ONLY SOAK OFF GEL WITH LOW HEATING FORMULA, FLEXIBLE BUILDER GEL

Medium soft, transparent, flexible builder gel with optical brightener. The consistency of this gel assures for you less working time. Self leveling and easy to handle. Thanks for the flexibility, it doesn't break, the cohesion is excellent.

Recommended removing: filing most of the nail, which was built with Gel 6 brush. Xtreme Gel brush, Nero Merlo II. brush.

Filing the most part of a nail, which built with the Cool (Remove) Builder Gel Clear, easy to soak off: it doesn't even take 10 minutes.

Curve time: UV: 20-25sec, LED: 10-15sec

Cure Time: UV: 2-3min, LED: 1-2min

Thickness ● ● ● ● ●



5ml –  
15ml –  
50ml –



After you removed most of the fake nail with e-file, you can easily soak off the nail which was built with Cool (Remove) Builder Gel.



## GUM GEL

Moderately soft, clear builder gel with a soft bluish shade. Extremely flexible, formable gel. Easy to shape and file. It can be applied in the salon work perfectly. Very easy to handle. Because of its strong adhesion, apply it under any builder gel as a base at problematic clients. Moves together with the natural nail plate, that is why it won't lift and break. Because of the flexibility of the product, we recommend to use it for the sculpting of nails with minimal length. Apply it with a softer brush: Xtreme Gel brush, 6 Gel or Nero Merlo II. brush.

Cure time UV lamp: 2-3 min, LED 1-2 min.

Thickness ● ● ● ● ●



5ml –  
15ml – 3.980,-  
50ml –



## BUILDER CLEAR I. CLEAR, THICK BUILDER GEL

Thicker builder gel, because of its ice-blue color, it has color brightening effect. It has gelatinous consistency in the jar, very dense builder gel, but becomes softer from the heat of the hand, it will be easier to handle this way. We recommend for natural nail length. It cannot be curved. Use softer brushes: Xtreme Gel brush, 6 Gel brush or Nero Merlo II.

Cure Time UV: 2-3 min  
it doesn't cure in LED

Thickness ● ● ● ● ●



5ml –  
15ml –  
50ml –



## PINK BUILDER HARD GEL EXTRA STRONG GEL FOR HIGHTENING THE NAIL BED

More lively and vivid version of the Builder pink 1. Builder Gel. Glass-effected and pink. Thanks to the consistency we can even use it with one easy move. We can make the nail bed more high for the smile-line filing technique. It doesn't flow so it is perfect for building a high c-curve. Apply it with Nero Merlo II., 6 Gel or Xtreme Gel brush.

Curve time: 40-50sec

Cure time: UV: 2-3min It doesn't cure in LED!

Thickness ● ● ● ● ●

5ml –  
15ml –



## XTREME PINK

### PINK FIBERGLASS BUILDER GEL

Transparent, medium thick, milky pink builder gel. This is the strongest pink builder gel in our repertoire. Easy to handle. Use for higher the nail bed or for sculpting a whole nail! Removes the color imperfections of the nail bed. It contains fiberglass, which makes the nails extra strong. Because of an accelerator component, it cures faster. During the curing process the gel could be hot, so cure the nails in sections: first 5 secs, then take the clients hand from the lamp for 5 secs, then cure it for 10 secs, then you can curve it. This way it won't cause burning sensation. Apply it with a harder brush: Firm Gel or Nero Merlo III. brush.

Curve time: UV: 10-15sec, LED: 5-8sec

Cure time: UV: 2-3 min, LED 1-2 min.

In basic attributes, it is similar to the Xtreme Clear: it can be curved perfectly.

Thickness ● ● ● ● ●



5ml –  
15ml –  
50ml –



## BUILDER PINK I. RENEWED

### TRANSPARENT PINK BUILDER GEL FOR NAIL BED ENHANCEMENT

Soft, transparent, glass effected builder gel. Use it for creating the enhancement of the Cover Pink and for the filing technique of the smile line. Apply it with a softer brush: 6 Gel brush, Xtreme Gel or Nero Merlo II. brush.

Cure time: UV: 2-3min

It doesn't cure in LED.

Thickness ● ● ● ● ●

5ml –  
15ml –  
50ml –



## BUILDER PINK II.

### SLIGHTLY COVERING PINK BUILDER GEL

Thick, transparent, milky peach strong buider gel. Covers the smaller nail imperfections if it used by its own. The heat of the nail makes this product a bit softer, so it can be more easy-to-handle. Use it for nail bed enhancement and for the filing technique of the smile line. Apply it with a soft brush: 6 Gel brush, Xtreme Gel or Nero Merlo II. brush.

Cure time UV: 2-3min

It doesn't cure in LED.

Thickness ● ● ● ● ●

5ml –  
15ml –  
50ml –



## ANTIFUNGAL PEDI GEL BUILDER GEL

Builder gel for nail correction, or replacement of nails. Soft, light peachy pink, almost clear gel. Use it for the creation of short natural-effect nails especially **on feet**.

Cure time: UV: 2-3min,

LED: 1-2min

Thickness ● ● ● ● ●



5ml –

15ml –



## GELLY COVER PINK BUILDER GEL

NEW CATEGORY BETWEEN THE COVER REFILL AND THE XTREME FUSION PRODUCT FAMILY

Cover gel what provides a perfect coverage. It can be applied on the whole nail or for the nail bed extension. The material is perfectly homogen so the nails won't be mottled or transparent. In one step you can make the heightening and nail bed extension.

Thanks to it's new „pudding” texture the material stays where we put (not selfleveling) and easy to apply because it's not runny. The desired form/curve can be made easily. This gel is the perfect choice for making high smile line wall thanks to its shape holding feature. At refilling or sculpting process we can put on the material all the five fingers so we can save time. Thanks to its perfect adhesion it wont be airy under the nails.

Not so flexible but it is stronger and does not break.

We recommend you to use the gelly brush for this gel.

Cure time: Uv: 2-3min, Led: 1-2min

Thickness ● ● ● ● ●



5ml –

15ml –

50ml –



## NEW! MILKY ROSE BUILDER GEL

MODERATLY THICK BUILDER GEL

Light Pink shade and it has a similar ability to cover like the Cover Refill Gel. Unique shade of pink builder gels what we can use in every phase of salon work: building the whole nail, filling up, even for the babyboomer. Because of the amount of the pigments, it can cure in a thicker layer. Use a base gel for proper cohesion, e.g. Compact base gel. Cure this periodically to avoid the too much heat. For curving, build a clear base because this gel cannot be curved.

Cure Time: UV: 2-3min, LED: 1-2min

Thickness ● ● ● ● ●



5ml –

15ml –

50ml –



CN advise: Use the Low heat mode on LEDExtreme lamp to avoid the massive heat!



# COVER REFILL GELS

## BUILDER GELS

Builder gel with natural effect and optimal coverage developed for refillings. It is a slightly covering Cover Pink, the color of this product is identical with the most popular Cover gel. In case of nails with nail bed extension the regrowth area can be filled in full thickness. With less pigments, that's why even if you use in full height, it will look like as a regular nail bed extension gel worked towards the root of the nail, nicely mashed. The work is faster with it, as the Cover Pink and the Clear material can be replaced at the same time (2 in 1): due to its pigment content, the color of the nail bed will be even, it can be used for nail bed enhancement. Apply it with a soft brush: 6 Gel brush, Xtreme Gel or Nero Merlo II. brush. Use it with base gel for the proper cohesion e.g. Compact Base Gel.

Curve time: UV: 30-35sec, LED: 20-25sec

CURE time: UV: 2-3min, LED:1-2min

### COVER REFILL HARD GEL

More dense version of the Cover Refill Gel. The color of those two is very similar to each other: beautiful pinky shade.



Thickness ● ● ● ● ●



5ml –  
15ml –  
50ml –

### COVER REFILL HARD TAN GEL

Warmer version of the bestseller Cover Refill Hard builder gel, for browner skin tone.



Thickness ● ● ● ● ●



5ml –  
15ml –  
50ml –

### COVER REFILL HARD CRYSTAL GEL

Wonderful gel for nail bed extension with pearly shade which contains ice-crystals.



Thickness ● ● ● ● ●



5ml –  
15ml –

### COVER REFILL GEL

Builder gel with medium soft consistency. It is similar with the bestseller Cover gel.



Thickness ● ● ● ● ●



5ml –  
15ml –  
50ml –

## ROCKY COVER LIGHTGEL

### NAIL BED EXTENSION GEL

Gel with medium warm, natural shade of pink color, for nail bed extension. The most popular Cover Pink color. Thanks for the self-leveling attribute, it is very easy to spread. It's not messy, doesn't flow around, and because of that, it is very easy to make a smile-line with that. The easy-to-handle Cover Pink which can cures even if you apply it a thicker layer. Apply it with a softer brush: Gel Brush 6, Xtreme Gel Brush or Nero Merlo II. brush.

Cure time: UV: 2-3min, LED: 1-2min

Thickness ● ● ● ● ●



5ml –  
15ml –



## COVER PINK

### NAIL BED EXTENSION GEL

Nail bed extension gel with natural color and it perfectly covers the nail. The color of this gel is almost the perfect match for most of the clients. Easy to use, softer type of gel.

This gel has a softer consistency, easy-to-handle, easy-to-work-with. With this gel, you can easily make the perfect color-transition in the cuticle-area and it has a perfect coverage near the smile-line.

Apply it with a softer brush: Gel brush 6, Xtreme Gel brush or Nero Merlo II. brush.

Cure time: UV: 2-3min, LED: 1-2min

Thickness ● ● ● ● ●



5ml –  
15ml –  
50ml –



Most wanted  
color

Bestseller!

## COVER PINK CRYSTAL

### PEARLY GEL FOR NAIL BED EXTENSION

Gel for nail bed extension with wonderful silvery (pearly) ice crystals and natural base color. Warm shade. Slightly thicker, but easy-to-handle. Apply it with a soft brush: Gel brush 6, Xtreme Gel brush or Nero Merlo II. brush.

Cure time: UV: 2-3min, LED: 1-2min

Thickness ● ● ● ● ●



5ml –  
15ml –



CN advise: we recommend you to blending the product before using it (carefully - try avoid to make bubbles in the material)!

## NEW! BABYBOOMER 2-WHITE BUILDER GEL FOR BABY BOOMER

More thick and more pigmented off-white builder gel for anyone who loves the lively and more white. More dense, it has a slightly „pudding” consistence but it’s self-leveling enough to work with. This consistence makes possible to stop at the edges so we can sculpting the whole height of the nail. Cure time: UV: 2-3min, LED: 1-2min

Thickness ● ● ● ● ● ●

5ml –  
15ml –  
50ml –



## BABYBOOMER-WHITE FOR BABY BOOMER TECHNIQUE

Slightly transparent white builder gel with medium density. It is a natural white builder gel, and can be worked on the nail perfectly. If it applied in a thin layer it will be transparent, if it applied thicker layer, it covers the nail perfectly. On the nail form it does not require a clear base layer, because it will cure perfectly. Apply it with a softer brush: Gel brush 6, Xtreme Gel brush, or Nero Merlo II. brush.

Curve time: UV: 15-20sec, LED: 10-15sec

CURE time: UV: 2-3min, LED: 1-2min

Thickness ● ● ● ● ● ●

5ml –  
15ml –  
50ml –



## BUILDER SOFT WHITE WHITE BUILDER GEL

Off-white, warm builder gel with medium thickness. For the creation of the natural looking french nails. This is a softer gel, which can be spread and treated easily. Not highly pigmented. Create the lunula with it at competitions! Apply it with a softer brush: Gel brush 4, Gel brush 4, or Nero Merlo II. brush.

Cure time: UV: 3-4min, LED: 2-3min

Thickness ● ● ● ● ● ●

5ml –  
15ml –



For those who likes the off-white french nails



# BUILDER WHITE II. RENEWED

## WHITE BUILDER GEL

Dazzling cold white, highly pigmented builder gel with medium thickness. Does not flow. It has self leveling attribute, and good coverage. Still cures, even if applied it thickly. In the lamp its surface gets even, because of the heat. Apply it with a softer brush: Gel brush 4, Gel brush 6 or Nero Merlo II. brush.  
Cure time: UV: 3-4min, LED: 2-3min

We recommend you to use a base gel for this but you don't need a top coat and in this way you'll get a brighter white french nail

Thickness ●●●●●●●●



5ml –  
15ml –  
50ml –



# XTREME WHITE

## WHITE BUILDER GEL

Thick, warm snow white builder gel. It is highly pigmented, so it has good coverage, even if applied it in a thin layer. Very bright shade of white and it is cures well. It can be spread easily even if it's thick. Doesn't flow, so we can create a nice, smooth surface with it.  
Apply it with a softer brush: Gel brush 4, Gel brush 6 or Nero Merlo II. brush.  
Cure time: UV: 3-4min, LED: 2-3min

We recommend you to use a base gel for this but you don't need a top coat and in this way you'll get a brighter white french nail

Thickness ●●●●●●●●



5ml –  
15ml –  
50ml –



 This nail was made with Babyboomer White 2 Builder Gel and Jewel Stickers by Virág Halász.

## BABYBOOMER GEL KIT – FOR BABY BOOMER TECHNIQUE 2X5ML

The babyboomer technique is very popular among the customers because of the decency of the design itself. The essence of it is they merge the white free edge to the color of a nail bed. The result is a more natural looks then the classic french nails. The kit contains the Cover refill hard and the new Babyboomer White, and we can use both of them to create a wonderful Babyboomer nail entirely with gels. When you done with the sculpting you can perfectly decorate it with the ChroMirror pigment powder, the Sugar-Powder, or the Crystal Mermaid Powder or any gel painting.

The kit contains:

- BabyBoomer White gel 5ml
- Cover Refill Hard gel 5ml



## NEW! BABYBOOMER 2 GEL KIT – FOR BABYBOOMER TECHNIQUE

These two color are perfect for each other, and they're complement for each other.

The kit contains:

- BabyBoomer White gel 2. 15ml
- Cover Refill Hard gel 15ml



## TITANIUM BUILDER GEL KIT

### KIT CONTAINS:

- Titanium Gel 5ml
- Renewed Builder White II. Gel 5ml
- Cover Pink Gel 5ml
- Xtreme Top Shine 4ml
- Cleanser pad (10db)
- nail form samples

## XTREME BUILDER GEL KIT

### KIT CONTAINS:

- Xtreme Clear Gel 5ml
- Xtreme White Builder Gel 5ml
- Xtreme Cover Pink 5ml
- Xtreme Top Shine 4ml
- Cleanser Pad (10db)
- Xtreme butterfly and Crystal Nails forms (10pcs)

## ROCKY COVER LIGHTGEL KIT

### KIT CONTAINS:

- Rocky Cover LightGel 5ml
- Titanium Gel 5ml
- Builder White II. Renewed Gel 5ml
- Xtreme Top Shine 4ml
- Cleanser Pad (10db)
- Xtreme Butterfly form (10 pcs)

## GUM BUILDER GEL KIT

### KIT CONTAINS:

- Gum Gel 5ml
- Easy Off White Gel 5ml
- Cover Mani Gel
- Easy Off Top Gel 4ml
- Cleanser 40ml
- sponges
- nail form samples



## COMPACT BASE GEL

### NEW GENERATION OF BASE GEL AND NAIL STRENGTHENER

Soak-off, flexible and super dense nail strengthener gel, it's self-leveling and creates smooth surface. Despite its high density, it's easy to work with. Features very strong adhesion which is perfect for a base layer. Enhances the durability of the nail strengthener but also could be used for creating the C-curve, fixing curved nails for sculpting nail extensions using nail forms.

#### How to use:

- Prepare the nails with Spray Prep or Nail Prep/No Buffer Scrub. No need to use Primer
- Apply color gel polish over the properly cured surface (Don't remove the thin tacky layer. It helps with applying the color more precisely)
- Compatible with all kind of CrystaLacs (Except: ONE STEP Easy CrystaLac)
- Using it as a base under ONE STEP CrystaLacs extends their durability similar to the 3 STEP CrystaLacs (up to 3 to 4 weeks)
- Features extreme adhesion hence perfect under hard gels too
- In case of sculpting- first remove the tacky layer then shape it like hard gels

Cure time in the UV lamp: 2-3 mins, in LED lamp: 1-2 mins.

4ml –  
8ml –  
13ml –

(the 13ml version is only available for the Clear and Cover Pink)

It's perfect for covering the natural nail surface and creating a nice, smooth layer for sculpting.

More durable, extra strong cohesion, nail strengthener, base gel recommended under builder gels too.

Speeds up the salon work: Features very strong adhesion which is perfect for a base layer. Enhances the durability of the nails as nail strengthener but also could be used for creating the C-curve, fixing chipped nails or for sculpting nail extensions using a nail form.



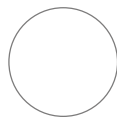
NEW! Milky White



Milky Rose



Cover Rose



Clear



Cover Pink



Translucent Nude

**NEW! Milky White:** We've waited for this milky white shade for a long time! You can make a beautiful and sophisticated nails because it is perfect for even a base color.

**Milky Rose:** It has milky effect with white and pinky shades. It gives a good base for the decoration; covers slightly. It will be the favourites of nude effect fans!

**Cover Rose:** It has a soft pinky shadow. It covers perfectly. Most of the time we use it on its own. It has a colour like 3S42.

**Clear:** Transparent, water-clear material. It is perfect under colours, especially when the base shouldn't have a basic colour.

**Cover Pink:** Our beautiful Pink cover color with opaque coverage. Recommended for French nails / pink and whites. Apply this Compact base gel as the base layer, the nail strengthener and as the pink base color of the French nails, then apply the white free edge color (recommended CoverPRO white) and use a top gel to finish the perfect French look.

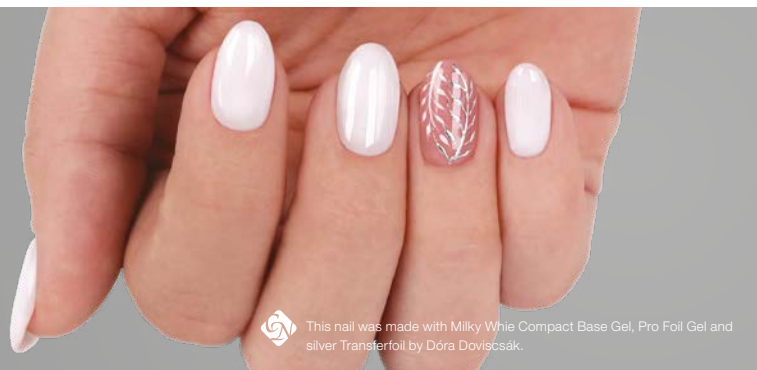
**Translucent Nude:** Translucent Nude: Medium opaque, natural, nude color that blends right with the color of the natural nails. Perfect for strengthening nails or dramatic, natural effect as well as a base under less opaque colors.



4ml

8ml

13ml



This nail was made with Milky White Compact Base Gel, Pro Foil Gel and silver Transferfoil by Dóra Dóvicsák.

# BUILDER BASE GEL BASE GEL



Medium dense, strong cohesion, flexible, soak off base gel. It can be used before gel filling or sculpting for base (for the appropriate cohesion) and it stops the base layer lifting up from the surface of the natural nail. Use it under 3Step crystalac, for Reverse tip technique or Xtreme Fusion Gel.

Cure time: UV lamp 2-3 min  
LED 1-2 min



4ml – 15ml –

# BASE GEL BASE GEL



Soft, flexible, soak-off base gel with good cohesion. It can be used before gel filling or sculpting for base (for the appropriate cohesion) and it stops the base layer lifting up from the surface of the natural nail. Use it under 3Step crystalac, for Reverse tip technique or Xtreme Fusion Gel.

This is the best soak-off base gel, so if someone wants to remove the gellac without filing, we recommend them for use this base gel.

Cure time: UV lamp 2-3 min  
LED 1-2 min



4ml – 15ml –



This nail was made with Builder Base Gel, Cover Refill Hard Gel and Xtreme White Gel. The decoration was made with white 3D gel and with micro-beads. Both the decoration and the sculpting was made by Alexandra Mész.



## NEW! COOL TOP 4 DARK

NON-CLEANSING, FLEXIBLE, SOAK-OFF  
SUPERSHINE FOR DARKER SHADES.

NEW!



Our most popular top gel, Cool Top Gel, gets a new version! It doesn't contain the component what makes the nail luminescent in a blue-ish color because of the UV light. Use this, and you will have no problem what you had with the other Cool Top Gel when you worked with warmer shades of colors (the warmer shades were different in a natural light, than in an artificial light). From now on, the bordeaux will be not purpleish, the black stays black. Non-cleansing, elastic, soak-off gel, middle-stiffness.

Cure time: UV lamp 2-3 min  
LED 1-2 min

4ml - 8ml - 13ml -

## COOL TOP GEL UNIVERSAL

NON-CLEANSING, FLEXIBLE,  
SOAK OFF SUPERSHINE



non-cleansing, soak-off, medium dense, durable and flexible and wonderful top coat. It can last even weeks, everyone loves it. It contains a blue UV filter, non-yellowing gel. After curing, you don't have to fix it. Recommended for gel or acrylic sculpted nails and on 3step or 1Step.



Cure time: UV lamp 2-3 min  
LED 1-2 min

4ml - 8ml - 13ml -



This nail was made by 3S114, Tiger Eye  
Infinity #4 and Cool Top 4 Dark Gel by  
Dóra Dovicsák

Crystal Nails®

TOP GELS

## TOP SHINE™ XTREME GEL

NON-CLEANSING, FLEXIBLE,  
TOP GEL



Non-cleansing, slightly flexible with extra high shining attributes. It can be used for any gel or acrylic nails. It contains a blue-ish UV filter and it's non-yellowing. It doesn't soak off, so we don't recommend for gellacs.

Cure time: UV: 2-3min  
LED: 1-2min

## TOP SEAL GEL

FLEXIBLE SHINECLEANSING,  
YELLOWING FREE



Thicker, extremely shiny, durable, clear shine gel. Flexible, cleansing, non soak off. Yellowing free gel nails. Advantage: the nail art design doesn't wear out under it. The consistency of the product is perfect even in the summer. It doesn't flow. It can be applied thickly, so the imperfections, file marks on the surface can be corrected. (Time and energy saving.) After curing, cleanse it with Cleanser in order to reach a perfect result.

Cure time in UV lamp 2-3 mins  
LED 1-2 mins.

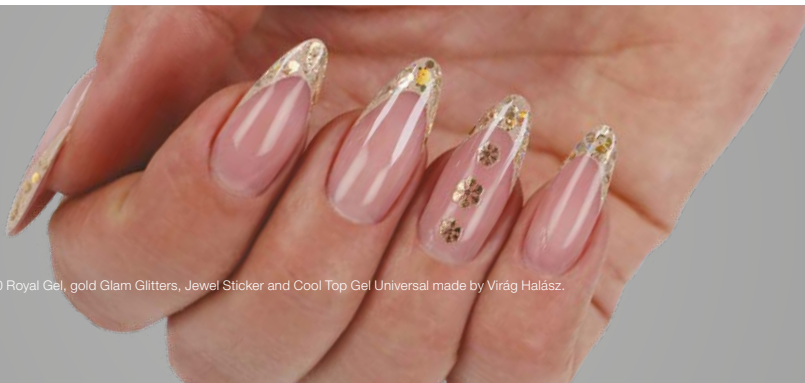
## TOP SEAL LIGHT GEL

FLEXIBLE SHINECLEANSING,  
YELLOWING FREE



Clear shine gel with medium density. Softer than Top Seal gel. Flexible, cleansing, non soak off. Yellowing free. Contains mild color brighteners. Use it on acrylic and gel nails. Advantage: the nail art design doesn't wear out under it. After curing, cleanse it with Cleanser in order to reach a perfect result.

Cure time in UV lamp 2-3 mins  
LED 1-2 mins.



# EASY OFF HARDENER GEL

SOAK-OFF, NAIL STRENGTHENERS

Soak-off, flexible, thick nail strengthener gel.

Recommended for make stronger the natural nail plate, but you can make some minimal nail correction (1-2 mm) with it too. We recommend to use a base gel before this product for the propiate cohesion and you apply this gel on that surface, 1 or 2 layers.

Cure time

UV: 2-3min

LED: 1-2min

15ml -

Use the Top Gel of its own, the Easy Off Top Gel!

Nail strenghtener

**CLEAR**  
water-like transparent



**MILKY WHITE**  
slightly covering



**MILKY PINK**  
slightly covering



## EASY OFF TOP GEL

Soft, flexible, cleansing, soak-off, top shine gel. For gel and acrylic nails. It could be used for nail strenghtener as well (on CrystaLac). It contains blue-ish UV filter for the perfect result.

Cure time

UV: 2-3min

LED: 1-2min



15ml -

## MATTEVER MATT TOP GEL

Non-cleansing, soak-off, flexible, super-matte top gel. With the help of this product, you could reach more durable result more then ever. It will not be shiny later. After curing, you have to cleansing it for the perfect resulation.

Cure time: UV: 2-3min, LED: 1-2min



4ml -  
8ml -  
13ml -



# COLOR GELS

REMARKABLE LIVELY COLORS





## COLOR GELS

REMARKABLE LIVELY COLORS

You can find so much colors and exciting effects and all of them are highly pigmented gels. Use them 1 or 2 thin layer, 1 minute lamp between the 2 layers. Before usage, carefully blend the gel with spatula; except the Fly-Brill gels.

### DECORATION GELS



Incredible selection of  
colors - nearly 500 colors

impressive  
effects

try the new colors in 3ml  
version.  
for limited time

3ml – (limited)  
5ml –



## COLOR GELS

REMARKABLE LIVELY COLORS

### DECOR GELS

3ml – (limited) / 5ml –



189  
poppy



197  
monaco blue



198  
creamy powder



205  
soft powder



208



210



212  
Orchidea



213  
Creamy Caramel



214  
Nude



215  
Coral Red



216  
Magnolia



217  
Velvet Lilac



218  
Burgundy



271  
Cognac



273  
Sangria



274  
Frosty Lilac

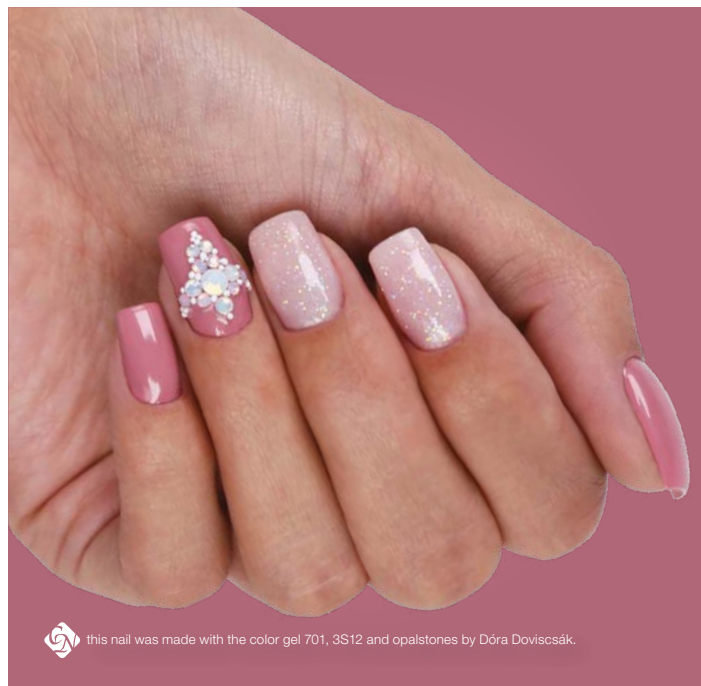


290  
Pistacia

Incredible selection of  
colors - nearly 500 colors

impressive  
effects

try the new colors in 3ml  
version.  
for limited time



this nail was made with the color gel 701, 3S12 and opalstones by Dóra Doviscsák.



this nail was made with color gel 24, Xtreme Fusion AcryGel by Edina Sikari

# COLOR GELS

REMARKABLE LIVELY COLORS

BRILLIANT GELS  
3ml – (limited) / 5ml –

COLOR GELS



The specialty of the brilliant color gel collection Crystal Nails is the exceptional sparkle particles in the gels and they're glowing more intense then ever. Besides, the colors are more lively so they can separated from the others.



501 Brill pink  
502 Brill bordeaux  
505 Brill sahara  
506 Brill gold  
507 Brill brick red  
508 Brill salmon



509 Brill indescent bordeaux  
510 B. red lavender  
511 Brill apple red  
514 Brill lilac  
515 Brill lavender  
517 Brill turquoise  
518 Brill sea-blue  
519 Brill black  
520 Brill graphite  
521 Brill hologram  
522 B. tiny hologram  
523 Brill silver  
524 B. iridescent orange  
525 Brill pearl



526 B. iridescent white  
528 B. iridescent red  
529 B. greenish pink  
531 B. lilac-blue  
533 Brill cardinal  
537 Brill champagne  
538 B. iridescent powder  
539 Brill royal blue  
540 B. big iridescent salmon  
541 B. dark rose  
542 B. big iridescent lilac  
543 B. little iridescent lilac  
544 B. little iridescent salmon  
545 B. iridescent silver



548 B. red diamond  
549 B. pink diamond  
550  
551  
552  
553  
554  
555  
556  
557  
559  
560  
563  
564



565  
566  
567  
568  
569  
570  
575  
578 Brill ocean blue  
588  
590 Brill pinky  
591 Brill pink

Crystal Nails®



# COLOR GELS

REMARKABLE LIVELY COLORS

## DECOR GELS

3MI – (limited) / 5ml –

Brilliant gel decoration advise:

We recommend the brilliant gel between two layers: one layer of builder gel, cure it, decorate with brilliant gel, cover it with builder gel making a c-curve.



592  
Laser b.  
Turquoise

284

180  
Magenta

185  
Chrome

186  
Nut

188  
Cabernet

Fd1

Fd2

Fd3

Fd4



Fd5

Fd6

Fd7

Fd8

Fd9

Fd10

Fd11

Fd12

Fd13

Fd14

Fd15

Fd16

### 1. LASER BRILL GELS

The glamour of the lasers in sunshine or light of the lamp has come to life and it is breathtaking.



### 2. FLASH GELS

You'll be the centre of every group with any of the softly flashing color gel.



### 3. PEARL GELS

Blue-ish Metal effects. Any luxury vehicle would be jealous of its color.

### 4. FULL DIAMOND GELS

The main attributes of the full diamond color gels is that they shine bright like a diamond. More strong shining than ever.



This nail was made with 161, 162 snow crystal color gel and white art gel by Dóra Dovicscsák.



## COLOR GELS

REMARKABLE LIVELY COLORS

### BRILLIANT GELS

**3ml – (limited) / 5ml –**  
Incredible selection of colors - nearly 500 colors  
Remarkable lively colors for limited time!

COLOR GELS



171  
Metallic silk  
turkish rose



630  
Royal blue



631  
Empress  
green



305  
Brazil  
Lime



306  
Sicilian  
lemon



307  
Andalusian  
orange



308  
Bahamian  
coral



309  
Miami  
Pink



310  
Thailand  
orchidea



311  
Malibu  
Blue



312  
Tahitian  
green



293  
Mint green



294  
Lemon yellow



295  
Creamy  
peach



296  
Romantic  
pink



297  
Cornflower



265  
Candy blue



267  
Candy rose



268  
Candy violet

#### 5. METALLIC SILK GELS

Silky-sugary effect with metallic lines.

#### 7. PASTEL GELS

Thanks for the development, these gels have incredible covering attributes. Soft pastel shades, not just for sophisticated customers.

#### 6. METALLIC SATIN GELS

Elegant golden sparkle: this is the way you can describe the creamy color gels. It doesn't even matter what you using for: Sculpting the free-edge or covering the whole surface of the nail, your customer will be amazed by her nails even if she goes to the bahamas for vacation.

#### 8. SILK CANDY GELS

Soft, silky colors, in a nice summer shades.



This nail was made with 314 and 537 color gels, the decoration made with magic sticker gold by dóra dovicsák

Crystal Nails®

## COLOR GELS

### OUTSTANDING AND VIVID COLORS

#### DECOR GELS

**3MI – (limited) / 5ml –**

Incredible selection - nearly 500 colors.

Spectacular effects

Try the new colors in 3ml version for limited time!



580 Silver  
175 Iridescent metal pink  
176 Iridescent metal turquoise  
178 Iridescent metal red

124  
127  
128  
129  
130



131  
132  
133  
134  
142  
161  
162  
163  
164  
165  
F6  
F10  
F13



F14  
F16  
F18  
100 Metal pink  
101 Metal cyclamen  
104 Metal brown  
105 Metal hazel  
112 Metal ruby  
113 Pearl rose  
114 Pearl shell  
115 Pearl white  
118 Steel pink  
119 Steel lilac



120 Steel red  
136 Purple black  
140 Deep blue  
158 Steel grey  
406 Pink effect

#### 11. SNOW CRYSTAL GELS

So soft and elegant sparkling velvet and pearl-metal colors. Easy elegance in luxury version.

#### 12. FLY-BRILL GELS

The light of fly-brill product-line of crystal nails makes you dazzle before you even get a chance to use it: it's enough to open the jar! These gels are ready to use without blending them, and most importantly, this gel has so good viscosity, it will leveling itself under the brush. Spectacle and easy-to-handle: this is the fly-brill.



#### 13. METAL GELS

Intense pearl and metal shades.

#### 14. EFFECT GELS

Translucent, sparkling gel to jazz up the colors underneath.

#### 9. MULTI GLITTER GEL

These color gels has exclusive, unique, multi-dimension sparkles in them tuned for maximum fabulousness! It contains 4 component.

#### 10. IRIDESCENT-METAL GELS

The iridescent version of the metal gels for decent and sophisticated women who also want some attention.



# COLOR GELS

## OUTSTANDING AND VIVID COLORS

### BRILLIANT GELS

#### 3ml – (limited) / 5ml –

Incredible selection - nearly 500 colors.

Spectacular effects

Try the new colors in 3ml version for limited time!



#### 15. NEON SILK CANDYGELS

Soft, sil-candy color in a wild summer neon shade.



#### 17. NEON CLASSIC GELS

Classic neon colors for those who like attention.



#### 18. SPARKLING GELS

The twinkle and sparkle of champagne in the gel.

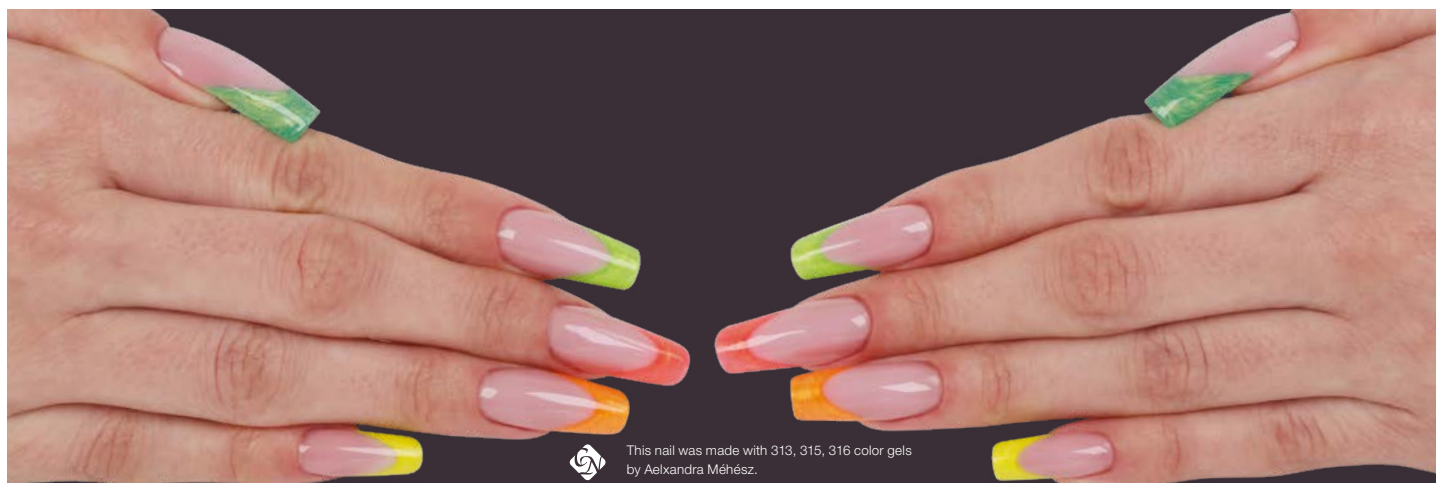
#### 16. NEON CRYSTAL GELS

2 in 1: the sparkling of snowcrystal (neon crystal) in neon colors.



#### 19. DIAMOND GELS

Two shiny diamond for the holidays: red diamond and black diamond.



This nail was made with 313, 315, 316 color gels  
by Aelxandra Mész.

# CHAMELEON AND SUPERNOVA COLOR GELS

REMARKABLE VIVID COLORS

Chameleon Thermo, Flash and Rainbow gels 5ml –



## 20. CHAMELEON THERMO GELS

The Chameleon Thermo Gels of the Crystal Nails are impossible to get bored on to: the colors will change between the nail bed and the free edge.



## 21. CHAMELEON FLASH GELS

Your nails will change the color because of the light: in sunshine or shadow, daytime or night, your nails will adapt itself for the time of the day.



## 22. CHAMELEON RAINBOW GEL



# MOONLIGHT EFFECT GEL



## MOONLIGHT EFFECT GEL

It's another exciting madness: be luminescent in the dark! Amaze your customers who loves french nails with this Moonlight Effect gel and make the free-edge wit this product. Imagine this: the lights are off and your nails are „glowing” in the dark, wherever you are! Two magical shade.

5ml –

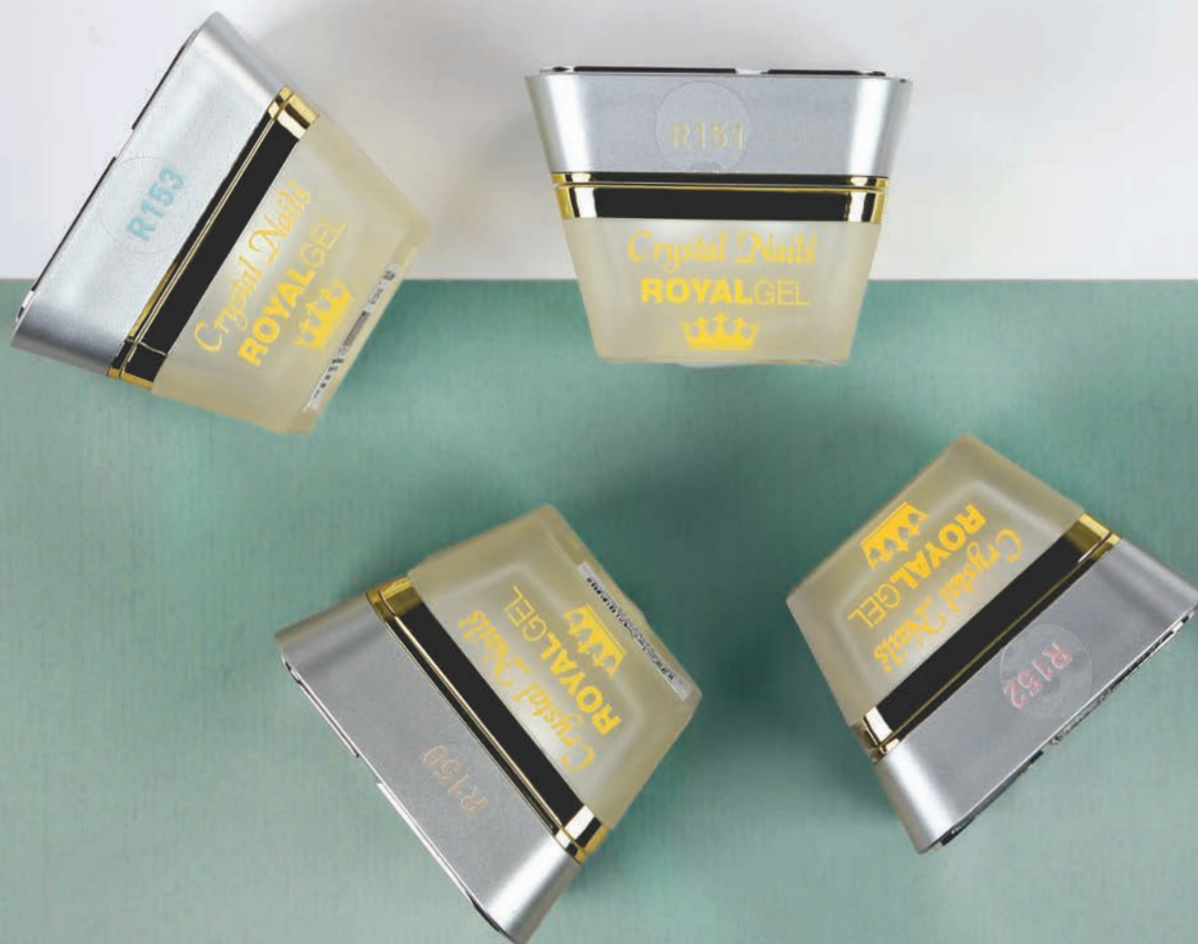






# ROYAL GEL

CLEANSING FREE COLORGEL, PERFECT  
COVERAGE IN ONE LAYER!



This nail was made with the R6, R127 Royal Gels, Crystal Flake, black and brown Art Gels by Edina Sikari.



Highly pigmented, so they will cover 1 (or 2 thin) layer(s) perfectly. After curing, the surface is dry and shiny. If we want to amplify the shine or we want to make sure that the shine will be longlasting, it's recommended to cover it with Xtreme Top Shine or Cool Top Gel. We can use it for covering the whole surface of the nail.

The Royal Gels are perfect for decorations as well, because of their highly pigmented material.

Cure time

UV: 2-3min

LED: 1-2min



1. NEON

# ROYAL GEL

CLEANSING FREE COLORGEL, PERFECT COVERAGE IN ONE LAYER

ROYAL GELS  
3ml (limited) / 4,5ml

ROYAL GEL



1. NEON

2. DIAMOND  
Diamond effect, in Royal Gels as well.



Crystal Nails®

# ROYAL GEL

CLEANSING FREE COLORGEL PERFECT COVERAGE IN ONE LAYER!

## ROYAL GELS

3ml (limited) / 4,5ml



This nail was made with R146, R147, Art Gel White, Xtreme Silver Transferfoli and O1 RoyalCream by Dóra Pásztor





**3. FULL DIAMOND**  
Remarkable sparkling!  
Make your cold days in the winter much better with the most bright shades of the holidays.

**4. CHAMELEON THERMO**  
It's impossible to get bored on to. This gel is changes its color between the nail bed and the free edges because of the difference of the heat.



this nail was made with the new R154, R155, R156 Royal gels  
by Mária Koncsik-Krály

## ROYAL GEL

CLEANSING FREE COLORGEL PERFECT COVERAGE IN ONE LAYER!

### NEVERENDING STORY ROYAL GEL KIT

The most beautiful Royal Gel Kit of Spring-Summer in 1 kit: 4 real popular color of the customers for everyone who wants to shine!

The kit contains:

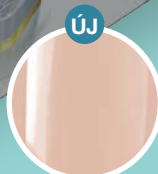
R154

R155

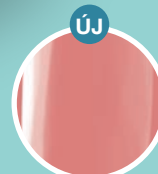
R156

R157

4x4,5 ml



R154  
Floating  
Island



R155  
Rose Tulip



R156  
Vibrant  
Orange



R157  
Spring  
Turquoise



# ART GELS





## BUBBLEGUM COLOR GEL

### BUBBLEGUM COLOR GEL

This decoration gel can be stretched like a bubblegum without any break, that's why we named it like that. Non-cleansing, and it doesn't require any cover. It can be combined with ChroMirror or any Pigment Powders, effect Powders.

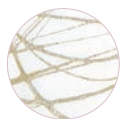
Skin Guard is recommended before using it, to easily remove from the skin. It can be used with decorating needle or brush.

It can be stretched with a decorating needle or a brush, for geometric patterns.

Cure time

UV: 2-3min

LED: 1-2min



Champagne



Black



Ruby



White



Rosegold



Gold

CN advise:  
cover the extra-thin  
pattern with top  
shine.

Can be stretched  
for long time in  
room temperature.



This nail was made with R144 Royal Gel, Ruby Bubblegum gel, Art Gel and Swarovski rhinestones by Barbara Magyarosi.





## DESERT GEL

## NON-CLEANSING DECOR GEL WITH FROST EFFECT

It could be used to build a whole nail with it but it can be used for decoration as well, because of the thickness of the material. The specialty of this gel is the rusty „sand-ish” effect on the surface. You can scratch patterns to the surface, thanks for the thickness. You can make color-transition too, because they can mixing easily. It can be used for 3D effects because it can be cure in a thicker layer.

Cure time

UV: 2-3min

LED: 1-2min



CN advise:  
For making more colors, use a bit of Art Gels but you can mix them together perfectly.



White



Peach



Baby pink



Lavender



Baby blue



Mint



This nail was made with 3S45 3Step CrystalLac, Desert Gel white, Holo Pearl Transferfol, Opal Blue Rhinestones, Micro Beads White by Dóra Kesztyűs.



## ROYALCREAM GEL

### ROYALCREAM GEL

Non-cleansing, thick decoration gel which combines the thickness of the Art Gel and the easy-to-handle attribute of the Royal Gels. It doesn't stretch, the viscosity is like a pasta, it gives a perfect 3D effect for the painted pattern. It will cure perfectly, if you apply it with a thicker layer. The colors can be mixed whatever way you want to. The limit is only your creativity.

Cure time

UV: 2-3min

LED: 1-2min



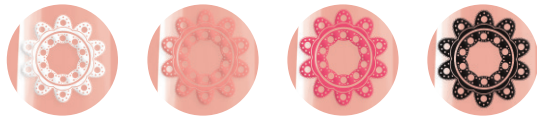
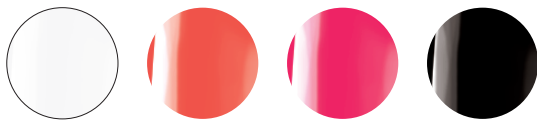
this nail was made with 3Step CrystalLac: 03, 17, 18,  
19 Royal Cream by Dóra Pásztor.



LACE GEL

The Lace Gel is an extra thick plasticine-like material, which we can use to make a perfect 3D patterns or apply it in a thin layer and create visionary lace patterns. Use it on the fully cured top shine! For making lace patterns, use a spatula for taking it out from the jar, apply it on the surface and with a little help of Cleanser. For working with it, we recommend you to use Mini 3D or 3D brushes or silicone brush. For the 3D patterns we can shape with our own fingers. Non-cleansing. We can colorized it with Art Gels, and don't cover it with anything.

Cure time  
UV: 2-3min  
LED: 1-2min



White

Peach

Pink

Black



CN advise:  
The Lace Gel is very  
sensitive for any lights,  
so keep the jar as  
closed as you can do!



This nail was made with 3S99, 3SFD2 3 Step CrystalLac, Lace Gel white, Art Gels and Bubblegum Color Gel Black by Dóra Kesztyűs.



# ART GEL

**CN advise:**

Use it extra thin for the perfect cure.

**CN advise:**

use it only for decorations. It cannot be used for painting the whole nail plate and/or the free edge either.

**CN advise:**

the help of the Ombre Stick sponge headed brush, create perfect color transitions with Art Gels!

## ART GEL PAINTING GEL

The new generation of gels which can be use for paintings, for those who love nail art. Thick, non-cleansing and extremely strong pigmented product. It could cover in a thin layer too. Thanks for the viscosity, it doesn't move or flow around while you working with it. It will cling it on shiny or matte surface and you dont have to cleanse it after curing. You can use it for One Move or Gel Painting technique; or make thin lines with it. With our Art Gels, the color transitions are more solid and homogeneous, the color of the patterns are more vivid and lively. There are 16 different colors exist.

Cure time:

UV 3-4min

LED: 2-3min



Use for the one  
move flowers



Art Red



Art Black



Art Blue



Art Yellow



Art White



Art Brown



Art Olive



Art Purple



Neon green



Neon narancs



Neon yellow



Neon coral



Neon pink



Art Baby Pink



Art Magenta



Art Fuchsia



Art Violet



Art Royal Blue



This nail was made with 3S108 3Step CrystalLac, Art gel Magenta, Fuchsia, White, Black, Olive by Edina Sikart.





# STAMPING COLOR GEL AND 3D GEL

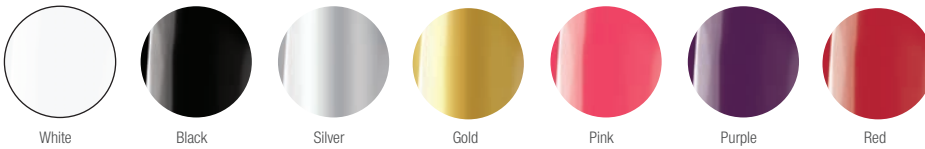
## STAMPING COLOR GEL

Non-cleansing, highly pigmented stamping gel, which is re-usable: that means that you don't have to apply gel on the stamping plate so often, you can push the stamp more than once on the plate (if it's necessary, of course).

If you using this gel, you don't have to race with time because it won't dries on air: only in lamp. Soak-off gel.

Cure time:  
UV 2-3min  
LED: 1-2min

3ml



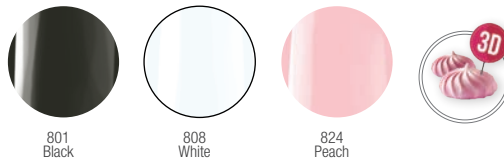
You can find the tools of the stamping technique on page 125-126.

## 3D GEL

Extra thick gel but easy to use, it can cure in thick layers as well which is good for 3D patterns. It will cling to the shiny surface as well. Easy to work with it if you use Mini 3D or 3D brush and for creating thin pattern or motives use 0 Short, Art Design or Phantom brush. After curing the surface will be shiny and dry.

Cure Time  
UV: 3-4min  
LED: 2-3min

3ml / 5ml



This nail was made with Tiger Eye Infinity #6 and Stamping Gel Silver by Mária Kocsik-Király.



Crystal Nails®

STAMPING COLOR GEL AND 3D GEL



# 3 STEP CRYSTALAC

EXTRAORDINARY PERSISTENCY AND AMAZING COLORS IN 3 STEP



## 3 STEP CRYSTALAC

EXTRAORDINARY PERSISTENCY AND AMAZING COLORS IN 3 STEP.

This wonderful product is providing you the persistency of the color gels but in a more easier way, thanks for the PolyHybrid technology. Highly pigmented product of course. The attached brush is perfectly matches the surface of the nail plate, so you can work more precisely and smoothly. This unique jar is not just spectacular but practical as well: your customer can easily pick their favorite color just look at them. Creamy, flexiable, soak-off material. The Base Gel of this product can be the Compact Base Gel, Builder Base Gel, Base Gel, Color Up Base Gel. For Top gel, we recommend you to use the followings: Clear 0/Top CrystaLac, Cool Top Gel Universal, Mattever Top Gel and Cool Top 4 Dark. The duration of the 3 Step CrystaLacs are approximatly 3 weeks. It can be soak-off about 10 min (deports on the thickness of the layer and the material what you use for removing).

Cure time  
UV: 2-3min  
LED: 1-2min  
4ml / 8ml



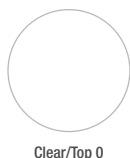
Extraordinary persistency and amazing colors in 3 step.

**CN advise:**  
In case of a thin nailplate, strenghten that with Compact Base Gel!

### NEW! CRYSTALAC COVER NR 1.

The idolized Cover Pink now available in 3Step CrystaLac! The most popular shades of the nailbed among the customers and professionals. The color of this gel is perfectly matches most of the customers, so it will be a lot of help for you to make babyboomer, nude or classic french nails. Use it shiny or matte, it will be fabulous anyway.

4ml / 8ml



Clear/Top 0



3S1



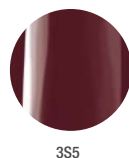
3S2



3S3



3S4



3S5



3S6



3S7



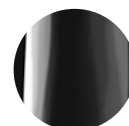
3S8



3S10



3S11



3S12



3S13  
Pistachio



3S14  
Strawberry  
ice cream



3S15  
Sangria



3S16  
Charming mauve

# 3 STEP CRYSTALAC

EXTRAORDINARY PERSISTENCY AND AMAZING COLORS IN 3 STEP

4ml / 8ml

**CN advise:**  
In case of a thin nailplate, strengthen with Compact Base Gel!

Extraordinary persistency and amazing colors in 3 step.

The most durable solution - it lasts 3 weeks.



8ml

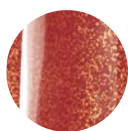
4ml



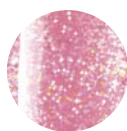
3S17  
Raspberry mouse



3S18  
Shiny cinnamon



3S20  
Brilliant meringue



3S21  
Brilliant marshmallow



3S23  
Brilliant neon coral



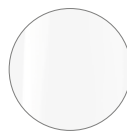
3S24  
Neon pink



3S25  
Neon lily



3S26  
Ferrari red



3S27  
Soft white



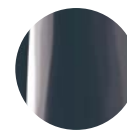
3S28  
Neon lollipop



3S29  
Brilliant neon violet



3S30  
Brilliant neon frutti



3S31  
Mr. Grey



3S32  
British mustard



3S33  
Madame Marsala



3S34  
Happy Blue



3S35  
Rose quartz



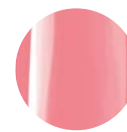
3S36  
Pony



3S38  
Energetic Pink



3S39  
Shiny Neon



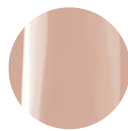
3S40  
Neon peach



3S41  
Neon tangerine



3S42  
Aster



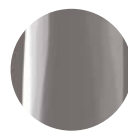
3S43  
Pink nude



3S44  
Ice Coffee



3S45  
Cloudy Blue



3S46  
Carbon-grey



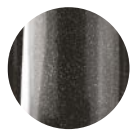
3S47  
Fiesta red



3S48  
Sweet fire-lily



3S49  
Euphoric cherry



3S50  
Night sky



3S51  
Winter charm



3S52  
Golden dawn



3S53  
Scarlet demon



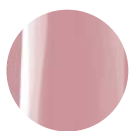
3S54  
Sensual bordeaux



3S55  
Basic Instinct



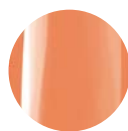
3S56  
Secret Rendez-Vous



3S57  
Punch Glaze



3S58  
Sparkling powder



3S59  
Vivid Salmon



3S60  
Mint-liqueur



3S61  
Turquoise amulet



3S62  
Caribbean blue



3S63  
Ink



3S64  
Orange blast



# 3 STEP CRYSTALAC

EXTRAORDINARY PERSISTENCY AND AMAZING COLORS IN 3 STEP

4ml / 8ml



8ml

4ml

Extraordinary  
persistence and  
amazing colors in  
3 step.

The most durable  
solution -  
it lasts 3 weeks.

**CN advise:**  
In case of a  
thin nailplate,  
strengthen that  
with Compact  
Base Gel!



3S65  
French fuchsia



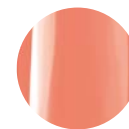
3S66  
Berry meringue



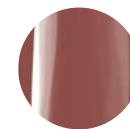
3S67  
Wild raspberry  
gel



3S68  
Scarlet currant



3S69  
Caramel-Butter



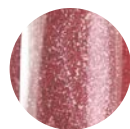
3S70  
Chestnut



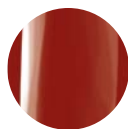
3S71  
Sour blackberry



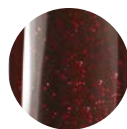
3S72  
Mountain crystal



3S73  
Peachy  
champagne cocktail



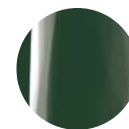
3S74  
Glowing Crataegus.



3S75  
Tango Argetino



3S76  
Diva-Blue



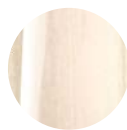
3S77  
Oil Green



3S78  
Snowwhite



3S79  
Classical ecru



3S80  
Persian Pearl



3S81  
Majestic  
flamingo



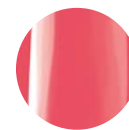
3S82  
Nice hyacinth



3S83  
Aquamarine



3S84  
Neon lemonade



3S85  
Neon flamingoflower



3S86  
Ultraviolet



3S87  
Neon red



3S88  
Ivory



3S89  
Peachy fig



3S90  
Diplomat-blue



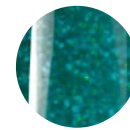
3S91  
Sweet chili



3S92  
Champagne  
madness



3S93  
Myanmar Ruby



3S94  
Mistical Emerald

This nail was made with 3S119, 3S120, 3S121,  
3S122 3Step Crystalac and Mattever Top Gel  
by Alexandra Méhesz.



Crystal Nails®

# 3 STEP CRYSTALAC

EXTRAORDINARY PERSISTENCY AND AMAZING COLORS IN 3 STEP.

4ml / 8ml

**CN advise:**  
In case of a  
thin nailplate,  
strengthen that  
with Compact  
Base Gel!

Extraordinary  
persistency and  
amazing colors in  
3 step.

The most durable  
solution -  
it lasts 3 weeks.



3S95  
Exciting Blue



3S96  
Banana shake



3S97  
Tutti-frutti



3S98  
Huckleberry  
cotton-candy



3S99  
Baby blue



3S100  
Golden ecru



3S101  
Golden nude



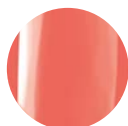
3S102  
Golden mauve



3S103  
Golden coral



3S104  
Raspberry  
cheesecake



3S105  
Creamy papaya



3S106  
Strawberry  
margarita



3S107  
Punch syrup



3S108  
Ruby cocktail



3S109  
Water hyacinth



3S110  
Creamy almond



3S111  
Colt rose



3S112  
Lilac



3S113  
Lava stone



3S114  
Blueberry



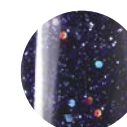
3S115  
Sparkling silver



3S116  
Sparkling gold



3S117  
Sparkling cherry



3S118  
Sparkling night



3S119  
Vanilla latte



3S120  
Strawberry foam



3S121  
Neon grapefruit



3S122  
Sunshine yellow



3S123  
Fairy Coral



3S124  
Fairy Rose



3S125  
Fairy Princess



3S126  
Fairy Violet





8ml

4ml

Extraordinary  
persistence and  
amazing colors in  
3 step.

The most durable  
solution -  
it lasts 3 weeks.

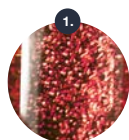
**CN advise:**  
In case of a  
thin nailplate,  
strengthen that  
with Compact  
Base Gel!

## 3 STEP CRYSTALAC

EXTRAORDINARY PERSISTENCY AND AMAZING COLORS IN 3 STEP.

4ml / 8ml

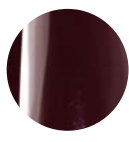
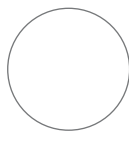
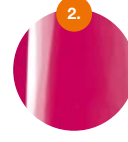
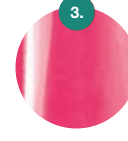
The index for the marked CrystalLacs with numbers on page 57.



3SFD6



3SFD7

GL1  
RedGL2  
Ferrari redGL6  
BordeauxGL7  
FuchsiaGL10  
Hot chocolateGL12  
VioletGL15  
Dark aubergineGL21  
SilverGL24  
WhiteGL26  
PunchGL36  
Baby blueGL44  
VelvetGL49  
Vivid honeysuckleGL52  
Honey-yellowGL55  
BlackGL58  
Antique roseGL60  
Dark grapesGL61  
NugatGL71  
Fainted pinkGL73  
ScarletGL75  
Red tangerineGL76  
Neon pinkGL77  
Neon orangeGL78  
Neon pink&peach

GL82

GL 85  
Hot loncGL88  
Mistical  
soft-greyGL90  
Deep  
flamigo-pinkGL93  
Baby pinkGL96  
Wild redGL101  
Diamond redGL108  
Dazzling redGL109  
Dazzling pinkGL115  
Soft seaweedGL118  
Soft powderGL119  
Desert sandGL120  
Pale yellowGL122  
Neon greenapple

# 3 STEP CRYSTALAC

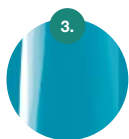
EXTRAORDINARY PERSISTENCY AND AMAZING COLORS IN 3 STEP.

4ml / 8ml

**CN advise:**  
In case of a  
thin nailplate,  
strengthen that  
with Compact  
Base Gel!

Extraordinary  
persistency and  
amazing colors in  
3 step.

The most durable  
solution -  
it lasts 3 weeks.



GL123  
Neon azurian  
blue



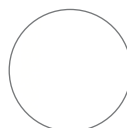
GL124  
Pastel purple



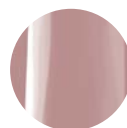
GL125  
Pastel pink



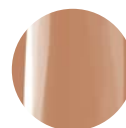
GL126  
FRENCH! (transparent)  
identical the most popular french laquer



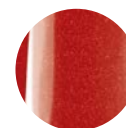
GL131  
White swan



GL133



GL134



GL138  
Orange-ish red



GL139  
Bordeaux



GL147  
Cotton candy



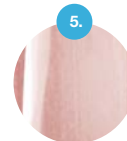
GL149  
Neon lemon



GL150  
Neon rose



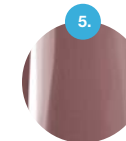
GL151  
Sangria



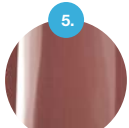
GL156  
Cashmere  
(KIND OF FRENCH)



GL159  
Silk  
(KIND OF FRENCH)



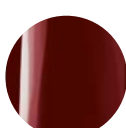
GL160  
Velvet



GL161  
Organza



GL162  
Sensual red wine



GL164  
Hot flamenco



GL300  
Rose



GL303



GL304



GL306  
Sparkling bronze



GL309



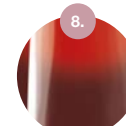
GL310



GL312



GL317  
Red Diamond



GL900  
Strawberry red -  
Dark bordeaux



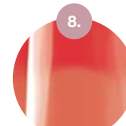
GL901  
Baby blue -  
Lavander



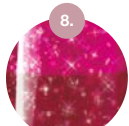
GL903  
Soft pink -  
Blue-ish purple



GL904  
Deep magenta -  
Night purple



GL905  
Soft peach -  
Salmon



GL906  
Sparkling twilight purple -  
Sparkling dawnred



GL907  
Sparkling turquoise -  
Sparkling ocean blue



3S908  
Vanilla - Peach



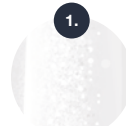
3S909  
Baby pink -  
Nude mauve



3S910  
Off white -  
Steel grey



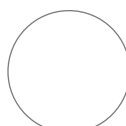
GLFD4



GLFD6

## XTREME WHITE CRYSTALAC

This is the most whiter white in the history of white! For those who likes the white on their free edge. Highly pigmented of course, so use it in a thin layer.



Xtreme White  
Crystalac



## 3 STEP CRYSTALAC

EXTRAORDINARY PERSISTENCY AND AMAZING COLORS IN 3 STEP.

4ml / 8ml

Extraordinary  
persistency and  
amazing colors in  
3 step.

The most durable  
solution -  
it lasts 3 weeks.

**CN advise:**  
In case of a  
thin nailplate,  
strengthen that  
with Compact  
Base Gel!

### 1. FULL DIAMOND CRYSTALAC

Spectacular, more intensive colors than the Diamond CrystalLacs. The must-have products for anyone who loves the CrystalLacs.



### 4. NEON CRYSTAL CRYSTALAC

They're sparkling like a velvet and yet vivid and lively colors. This CrystalLac contains a new generations of neon-pigments. Compared to Neon Crystal, every other detail remains insignificant!

### 7. HOLO TOP CRYSTALAC

Thanks to the hologram effect, this sparkling 3 Step CrystalLac will change their colors when you look at it from different angles.

### 2. FASHION CRYSTALAC

Glowing colors - without sparkling

### 5. CASHMERE CRYSTALAC

Delicate and creamy beige colors, and they will remind all of your customers their favorite sweater. This is the jackpot for all occasion, choose whatever shade they want.

### 8. CHAMELEON THERMO CRYSTALAC

They change their color for the heat, highly pigmented. They can never be bored on to.



### 3. NEON CRYSTALAC

With the new types of pigments, it can be noticed from miles. the sensation is guaranteed.



### 6. BRILL CRYSTALAC

This product has the biggest sparkling particles ever, for those who likes the fashionable dazzle.



This nail was made with 3S109, 3S110, 3S111 and 3S112 3  
Step CrystalLac by Melinda @czdk.



## SEASONAL 3 STEP CRYSTALAC KITS

### NEW! FAIRY TALE CRYSTALAC KIT

All of our new sparkling, dazzling in silver 3 Step CrystaLacs are in 1 KIT. 4 fabulous shade for make your customer the most beautiful for the spring!

The KIT contains:

3S123

3S124

3S125

3S126

4x4ml



3S123



3S124



3S125



3S126



### NEW! FANTASY LAND CRYSTALAC KIT

The new 3 Step CrystaLacs will take you to Fantasy Land. During the salon work, the cheerful mood is guaranteed, thanks for the happy and creamy shade of spring.

The KIT contains:

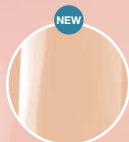
3S119

3S120

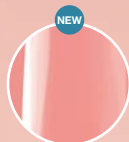
3S121

3S122

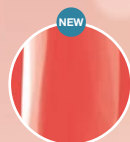
4x4ml



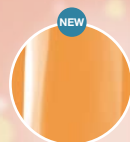
3S119



3S120



3S121



3S122



## 3 STEP CRYSTALAC KITS

### 100% CASHMERE 3 STEP CRYSTALAC KIT

Very soft, girly shades and they will remind all of your customers their favorite sweater. 4 creamy beige color in one box, in case if you couldn't choose!

The Kit contains: 156, 157, 158, 159  
4x4ml



### TRY ME! COLLECTION – 3 STEP CRYSTALAC TRIAL KIT

This 3 Step Crystalac kit is made for those who want to make sure about the Crystalacs are indeed that durable and pigmented materials as they've heard. This is the trial of the original Gellacs. The kit contains: Base Gel, GL2, Clear/Top 0

4x4ml



### NEON 4COLORS4DISPLAY 3 STEP CRYSTALAC KIT CAN BE TRANSFORMED TO A DISPLAY.

4 cool 3 Step crystalac color for summer in 1 box, and just a few move and voilà, you've got a fun display!

3S30, 3S39, 3S40, 3S41

4x4ml



## 3 STEP CRYSTALAC KITS

### FULL DIAMONDS 3 STEP CRYSTALAC KIT

This remarkable 3 Step Crystalac is sparkling more than our full Diamond Colors. This is a must-have kit for those who love the Full Diamond colors and the 3 Step product line.

The kit contains: 3SFD1, 3SFD2, 3SFD3, 3SFD4  
4x4ml



### GOLD CANDY 3 STEP CRYSTALAC KIT

4 dazzling golden glitters 3 Step Crystalacs in 1 kit. 4 exceptional Crystalac shade for the chilly days to feel a little more comfy and warm.

The kit contains: 3S100, 3S101, 3S102, 3S103  
4x4ml





## MOSAIC CRYSTAL LIQUID / AURORA CRYSTAL LIQUID

### MOSAIC CRYSTAL LIQUID

DECORATION LIQUID WITH CRACKING EFFECT.

Go crazy with our new spring shades by the Mosaic Crystal Liquid decoration gel. Use this on vivid color or any sparkling material and let the liquid do its job! If you would like to reach a smaller cracks, apply it in a thin layer but if you want to see more massive, more spectacular cracks, use it in a thicker layer.

4ml



### AURORA CRYSTAL LIQUID

The Aurora Crystal Liquid is an art liquid which can change the color depending on the temperature and it will look like the Aurora Borealis a.k.a the northern light. We can use it on any CrystaLac or Color Gel surface, but we recommend that use a darker shade in order for the whole color scale could be visible.

Use this way:

Matte (use a buffer) the non-cleansing base or if you use a material which is require cleansing, cover surface with Cool Top Gel Universal and then matte the surface.

Apply the product in any way you want, create any kind of pattern with it, and wait for the material to dry on air (which is depend on the thickness of the layer). When it dried, the product will be translucent (see-through). After this you have to file the edge of the nail and finally cover it with Cool Top Gel Universal and close it.

Attention! If you use this product for the whole nail plate, the material won't remain durable. Use it for decorations what aren't reaches the edges of the nailplate.

4ml



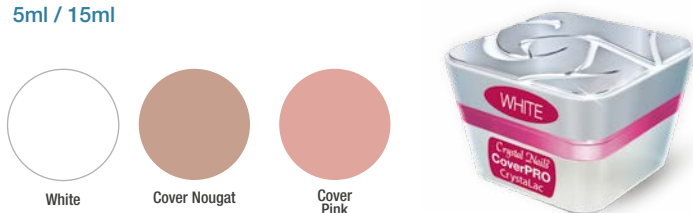
# COVERPRO CRYSTALAC / WATERPRO CRYSTALAC / AQUAINK CRYSTAL DROPS

## COVERPRO CRYSTALAC – WHITE, COVER NOUGAT, COVER PINK

This regrowth free technique was brought from nail sculpting to gel polishing. We create the regrowth free gradient in gel polishing, like we do in case of artificial nails. As the color is mashed towards the root of the nail, the regrowth will remain invisible.

**Cover Nougat:** Warmer shade, perfectly matching with most skin tones.  
**Cover Pink:** In the same color of the most popular Cover Pink Gel, it is brighter than Cover Nougat.

5ml / 15ml



## COVERPRO ECSET

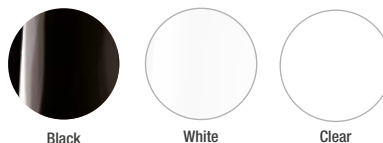
We developed CoverPro brush with the rounded top and with natural hair especially for this technique.



## WATERPRO CRYSTALAC FOR THE PROFESSIONAL „WATERWAY” TECHNIQUE

You can drop any type of 3 STEP CrystaLac or ONE STEP CrystaLac into this non-cleansing, soak off WaterPro CrystaLac and with a brush (0 Short or 0 Long) or with a nail art needle you can create different designs. Before using the new WaterPro CrystaLac Clear, you have to apply a base color.

4ml



## AQUAINK CRYSTAL DROPS

The new generation among the art liquid product lines. Faster than ever, and easy to use. The best base color for this material is white but you can use any pastel or „full cover” color (Milky Rose Compact Base Gel or the new Crystalac Cover Nr. 1). What is important that the surface must be scratch free and completely matte.

Recommended brushes: Phantom, Art Design, Aquarell.

Relative liquids: Nail Prep, Cleanser, Acryl Remover, Easy Remover.

**Layer order:**

Color, Cool Top Gel Universal, scratch-free buffing, AquaInk Crystal Drops, Cool Top Gel Universal (we don't recommend using Cool Top 4 Dark, it could cause fading).

4ml – 1.450,-



**CN Tip:**  
 In order to get more sharp pattern, use acetone but if you want to achieve more blurred lines, use Nail Prep.

# TIGER EYE CRYSTALAC

TIGER EYE CRYSTALAC



**BEST of**  
Crystal Nails

## TIGER EYE CRYSTALAC

Real Tiger Eye effect, thanks for the super strong magnets. We can see a unique tigere eye effect on the nail as we move the hands in the lights: the reflection of the light will move around on the nail. Because of a very special component, we can control the particles inside the gel, using the magnets. Use the magnets after the 2nd layer. Hold still above the surface of the nail around 3-4 mm for 4-5 sec and then cure it.

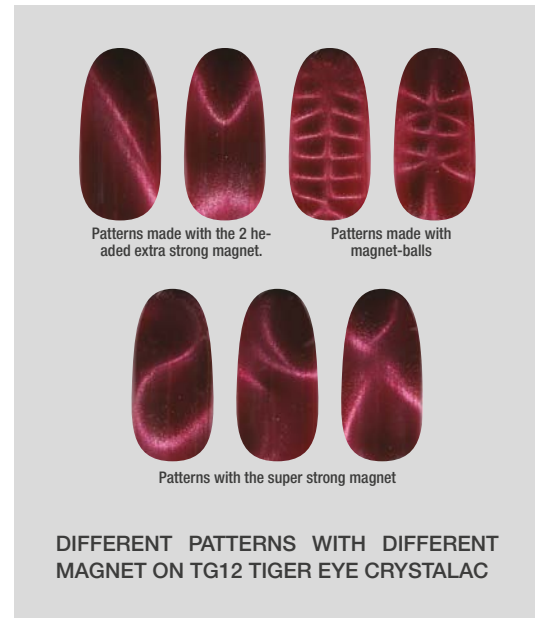
Cure time  
UV: 2-3min  
LED: 1-2MIN  
4ml / 15ml

### TWO HEADED EXTRA STRONG TIGER EYE MAGNET



POINT MAGNET, SMALL

### SUPER STRONG TIGER EYE MAGNET



DIFFERENT PATTERNS WITH DIFFERENT  
MAGNET ON TIG12 TIGER EYE CRYSTALAC

## TIGER EYE INFINITY CRYSTALAC / ANGORA CRYSTALAC

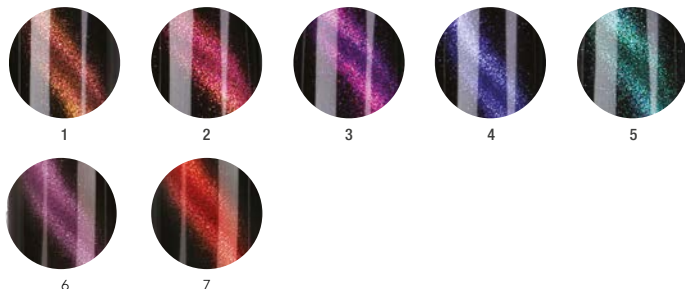
### TIGER EYE INFINITY CRYSTALAC

This product line has been waited for a long time now!

This tiger eye effect not just reflects the lights, it even changes its color! Every shades change if you look at it from a different angle and it reacts on the warm/cold lights as well! One shade is not just providing us only one, but three different colors to see.

It has to be used differently than the usual TigerEye products: we recommend to use it in a black base, but it looks good in other darker shades as well: bordeaux, aubergine, dark green, dark blue.

Cure time  
UV: 2-3min  
LED: 1-2min  
4ml

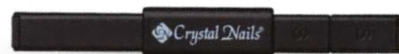


### MULTIFORM TIGER EYE MAGNET

This TigerEye Magnet could be used to create more and new shapes in the TigerEye universe. The strong magnet covers the whole surface of the product, and it could be use to make S, X, + shapes.

Be creative and use the different parts of the magnet.

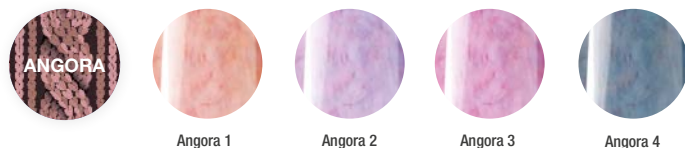
Size: 8,2 CM



### ANGORA CRYSTALAC

The Angora 3 Step CrystaLac is the favorite of the holiday/winter season. This is the re-thought version of the most popular sweater patterns. Decorating it with the RoyalCream Pasta-gels, we can create some special winter designs.

Cure time  
UV: 2-3min  
LED: 1-2min  
4ml





## CHRO°ME CRYSTALAC

CHROME EFFECT: WHAT HAS BEEN IMPOSSIBLE UNTIL NOW!

Flexiable, soak-off, metal-effeced chome CrystLac. We can achieve metally, chrome effect on the natural nail and on sculpted nail as well. Apply on the non-cleansing surface (Cool Top Gel Universal, Royal Gel, One Step Crystalac), and when it dried (on air), cover it with Chrome Top first, then close it with Cool Top Gel Universal. You can create special decorations with the Chro°Me CrystaLac as well: use it on Royal Gel, Art Gel, 3D gel if you want. Go nuts! For achieving antique effect, buff the nail before use it (in these cases you must cover it with Chro°Me Top). Apply on thin layer at the time, because it will dries faster and it will be mor fabulous! Don't cover the edges of the nail! Shake it up before using it. The Chro°Me CrystaLac dries on air, but the heat of the lamp could help the process.

4ml



## CHRO°ME TOP CRYSTALAC

Specifically developed for Chro°Me CrystaLac, non-cleansing cover product. Your Chro°Me CrystaLac will be durably only if you use this cover and close it with this. It will make the color durable and it doesn't modify the color.

4ml





# ONE STEP CRYSTALAC



# ONE STEP CRYSTALAC

USE VIVID GELLACS FAST

4ml / 8ml

ONE STEP CRYSTALAC

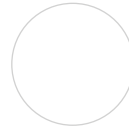
Non-cleansing, flexible, soak-off CrystalLac with bushes inside. Maximum 2 layers, non-cleansing. If you want to raise the shine of it, cover it with One Step 0 Top, cool Top Gel Universal or for the darker color use Cool Top 4 Dark. It lasts approx. 2 weeks.

Cure time

UV: 2-3min

LED: 1-2min

if you want a durable gellac identical with 3 Step CrystalLac, use Compact Base Gel for this product!



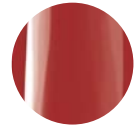
0/Clear



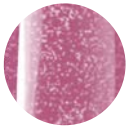
1S1  
Pomegranate



1S2  
Chilly cherry



1S5  
Rumpunch



1S6  
Honey grape



1S8  
Strawberry ice cream



1S17  
Ferrari red



1S18  
Sparkling neon  
frutti



1S19  
Neon pink



1S20  
Sparkling neon coral



1S26  
Sangria



1S31  
fresh green apple



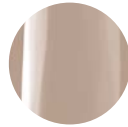
1S33  
Vibrant coral



1S34  
Cadillac pink



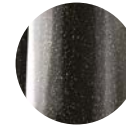
1S35  
Smokey grey



1S36  
Frappé



1S40  
Charming red



1S42  
Rouge noir



1S43  
Glorious gold



1S44  
Glorious rosegold



1S45  
Punch glaze



1S46  
American peanut-butter



1S47  
Tuscan sunshine



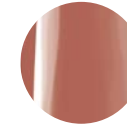
1S48  
Restless blue



1S49  
Topaz blue



1S50  
Sailor blue



1S52  
Chesnut



1S53  
Cherry pie



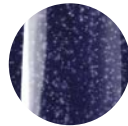
1S54  
Blood orange



1S55  
Strawberry champagne



1S56  
Chocolate soufflé



1S57  
Midnight snowstorm



1S58  
Peach mousse



1S59  
Punch pudding



1S60  
Fresh mauve



1S61  
Spearmint



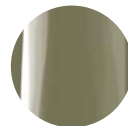
1S62  
Madagascar  
vanilla



1S63  
Orange coral



1S64  
Mojito mint



1S65  
Military green



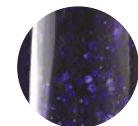
1S66  
Satin iris



1S67  
Noble dark-mauve



1S68  
First snow



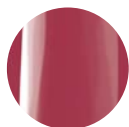
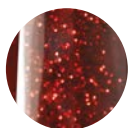
1S70  
luxurious sapphire

Crystal Nails®

# ONE STEP CRYSTALAC

USE VIVID GELLACS FAST

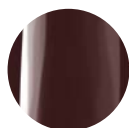
4ml / 8ml

1S71  
Cherry flower1S72  
Peach flower1S73  
Somfa1S74  
Red coral1S75  
Soft candy pink1S76  
Pink grapefruit1S77  
Hibiscus fever1S78  
Chilly dream1S79  
Autumn dream1S80  
Mistical mauve1S81  
Rose hip1S82  
Creamy pumpkin1S83  
Holiday ruby1S84  
Velvet scarlet1S85  
Sparkling plum1S86  
raspberry exstasy1S87  
Soft marshmallow1S88  
Creamy huckleberry1S89  
Smooth mint

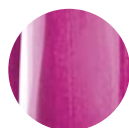
OS1



OS2



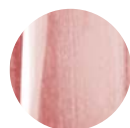
OS4



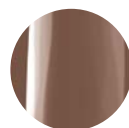
OS6



OS7



OS8



OS9



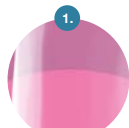
OS11



OS16



OS21



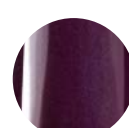
OS22



OS24

OS30  
CherryOS31  
Vivid red

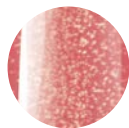
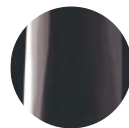
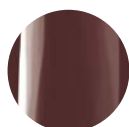
OS34



OS39



OS40

OS45  
Flash redOS55  
Diamond pinkOS64  
NudeOS66  
Midnight blackOS73  
Ferrari-redOS76  
Steel blueOS77  
Luscious figOS78  
Belgian pralineOS79  
Red dried-  
huckleberrySuper fast  
and gentle

**CN tip:**  
In case of a thin  
nail, strenghten the  
nail with Compact  
base gel

## 1. CHAMELEON THERMO ONE STEP CRYSTALAC

Popular colorchanging in fabulous shades: because everyone love the diversity.





**NEW! SECRET GARDEN ONE STEP CRYSTALAC KIT**  
Fabulous, girly shades and they will fly your customer to the magical fairy world! The trend colors of the spring in one kit.  
The kit contains:  
1S86  
1S87  
1S88  
1S89  
4x4ml

**LIMITED**



1S86 Raspberry romance  
1S87 Soft marshmallow  
1S88 Creamy cranberry  
1S89 Cling mint

### NO BUFFER ONE STEP CRYSTALAC STARTER KIT

Starter kit with NO BUFFER SCRUB- ONE STEP gel polishing is now more delicate than ever before! The kit contains every necessary material and tool for ONE STEP CrystaLac gel polishing. The kit contains: color ONE STEP CrystaLac 8ml (1 color / kit) enough for approx. 30 complete manicure, No Buffer Scrub 30ml, Super Shine Optic 8ml, lint free pads, five-finger LED lamp, orange wooden stick, metal cuticle pusher.



2 different kits:  
In #45 Flash red and #65 Babypink one color/kit





# ACRYLIC BUILDER POWDERS



## MASTER POWDERS

FASTER CURE TIME, CURE SMOOTHLY AND QUICKLY . FOR COMPETITIONS AND EXPERIENCED NAIL TECHNICIANS. THE EVEN GROUND ACRYLIC GRAINS ENSURE THE NON-BUBBLE COVER



### CRYSTAL CLEAR

- water-clear transparent powder
- due to its fast cure it is excellent for covering the free edge so that the materials shall cure at the same time and the nail could be sculpted easily
- being so clear it is suitable for covering colored free edges



### SUPER WHITE

- flashy white
- fast-cure acrylic powder
- „warmer” tone



### DARK PINK

- Darker pink transparent powder
- excellent on top of Cover Pink powder for nail
- it makes a beautiful contrast with a white free edge for nails without nail-bed extension
- bed enhancement
- for a darker skin type

17g  
28g  
100g

For experienced nail technicians and competitors: creamy, a bit more faster curing powders. For the beautiful French nails adjusted to the client's needs.



This nail was made with Crystal Clear acrylic powder, Jewel Sticker 21 by Monika Majnik





## SLOWER POWDER

SLOWER CURE TIME, SMOOTH AND SLOW CURE. CAN BE SHAPED, SCULPTED AND CURVED FOR A LONGER TIME, GOOD FOR LESS EXPERIENCED ACRYLIC NAIL TECHNICIANS, NON-YELLOWING, CREAMY FORMULA, BUBBLE-FREE, DUE TO ITS FINELY GROUND INGREDIENTS

17g / 28g / 100g



### TRANSPARENT PINK

- lighter, transparent pink
- for a lighter skin type
- for the less experienced nail technicians it's good for nail-bed enhancements



### CRYSTAL CLEAR

- transparent powder
- for a slower work pace
- due to its clear formula it is perfect for covering colored free-edges



### ULTRA WHITE

- „warm’ white
- perfect for salon work as well as competitions



only 17g and 28g version

### SOFT WHITE

- off-white powder
- for the lovers of the natural effect
- perfect for creating the lunula

**CN tip:**  
For those who do not like the dazzling white nails.

For a slower work pace: creamy formula, slower cure time, powders can be shaped/spread for a longer time. Being finely ground the powder-liquid on the brush is creamy easily shaped and spread, also it's bubble-free.

This nail was made with Transparent Acrylic powder, Silver micro beads and Gem Glue Gel by Virág Halász



## COVER PINK POWDERS

OPTIMAL COLORS, GOOD COVERAGE, WIDE RANGE OF COLORS,  
MATCHING TO ALL SKIN TYPES, EASY TO SHAPE AND SPREAD,  
LONGER SHAPING TIME



### COVER PINK

#### NAILBED EXTENSION PINK

- warm color, popular general color
- the most popular tone
- matches with most guests' skin tone



### COVER PINK NEXT

#### DARKER NAILBED EXTENSION PINK

- darker, violet-like color
- cold-effect
- perfect cover formula
- can be combined with light



### COVER PINK X

#### LIGHTER NAILBED EXTENSION PINK

- light baby pink colour
- cold-effect
- perfect cover formula



### COVER PINK CRYSTAL

#### SPARKLING PEARLY WHITE

- Beautiful pearly color
- Silvery ice-crystal shine, cold-effect
- Its base is the Cover Pink so it matches with most of the guests' skin tone



### COVER PINK DIAMOND

#### SPARKLING PEARLY WHITE

- Its base is the Cover Pink so it matches with most of the guests' skin tone
- Beautiful pearly color
- Pinky golden shine
- Warm effect

17g  
28g  
100g

The cover pink material is for aesthetic nail-bed extension and for covering up the outgrown smile line; it is a flesh-color material with the same color as the natural nail-bed. Available in many colors to match each guest's skin types. For the perfect use and color effect the unnecessary liquid must be absorbed with a paper towel. To have the perfect covering it should be thicker at the smile line. Towards the nail root it should be thinner thus the outgrowing will not be seen. The Cover Pink can be covered with pink acrylic powder to get a more vivid color, or it can be used by itself as well

## BABY BOOMER ACRYLIC KIT

### FOR BABY BOOMER TECHNIQUE

BabyBoomer technique is very popular among the decent clients. The essence of it is that the white free edge is mashed with the nail bed color. So this technique is regrowth free, but the result is more natural than in case of classic French nails. With this kit, you can easily create the this design, the only thing you need is your favorite acrylic brush. (On the BabyBoomer nails any type of nail art design looks amazing, such as Sugar Effect, velvet powder, Crystal mermaid powder or gel painting.)

The kit contains:

- Soft White Slower Powder 17g
- Xtreme Crystal Clear Slower Powder 17g
- Cover Pink Master Powder 17g



### CRYSTAL LIQUID

High quality liquid, which provides a suitable cure time for the acrylic powders. Relentlessly strong, fragrant air-cure, blue liquid, in which the acrylic grains are bathing and binding very strongly; they stick into the nail and do not give room to yellowing. Due to its special nature it provides flexibility to the material when being decorated and sculpting.

40ml  
100ml  
500ml

Strong Liquid  
maximum cohesion

World champion  
winner material



### UV LIQUID

UV LIQUID Odorless, clear liquid. It is characterized by a longtime shaping time (can be formed endlessly) since it cures only in the UV lamp. Due to the sticky layer forming on the surface working with it can be slower than the scented version.

40ml



### LIQUID HOLDER

Double-walled thermal-balance liquid container for your acrylic cure not to accelerate in the summer and slow down in the winter. It provides the optimum temperature for the appropriate cure. The brush can be dipped into the liquid completely without touching the bottom of the jar. This way more fluid can be put on the brush and the brush tip will not be damaged. The cork will stop the liquid to evaporate.



## SLOWER ACRYLIC KIT

SLOWER ACRYLIC TRIAL KIT:

- Slower powder (Transparent Pink 3,5g, Ultra White 3,5g, Brilliant por 3,5g)
  - Liquid 30ml
- Crystal Nails form sample



## MASTER I. ACRYLIC KIT

MASTER I. ACRYLIC TRIAL KIT:

- Master powder (Dark Pink 3,5g, Crystal Clear 3,5g, Super White 3,5g)
  - Liquid 30ml
- Crystal Nails form sample



## MASTER II. ACRYLIC KIT

MASTER II. ACRYLIC TRIAL KIT:

- Master powder (Cover Pink 3,5g, Crystal Clear 3,5g, Super White 3,5g)
  - Liquid 30ml
- Crystal Nails form sample





# ACRYLIC COLOR POWDERS

REMARKABLE VIVID AND SHINY COLORS





## COLOR POWDERS

FINE GRINDING, STRONG PIGMENTATION OPTIMAL CURE TIME

### DECORATING ACRYLIC



7g

Extraordinary  
vivid colors

High covering formula with a wide variety of powders. Finely ground, they require more liquid than the building powders. Powders containing color pigments, glitters must be absorbed by a dry paper towel in order to get the proper color and texture. Thus your favorite color acrylic will be easy to use. When using them build a thin transparent base, or put directly onto the template. Cover them 50 with Clear material.

# ACRYLIC COLOR POWDERS

FINE GRINDING, STRONG PIGMENTATION OPTIMAL CURE TIME

## DECORATING ACRYLIC



This nail was made with 584 Acrylic Color Powder by Virág Halász



# ACRYLIC COLOR POWDERS

FINE GRINDING, STRONG PIGMENTATION OPTIMAL CURE TIME

ACRYLIC COLOR POWDERS

## DECORATING ACRYLIC



7g

### 1. METAL POWDERS- SNOW CRYSTAL COLLECTION

Snow crystal collection - fine sparkling with velvety effect

### 4. DIAMOND POWDERS

2 sparkling diamond for the holidays

### 2. BRILLIANT ACRYLIC POWDER

Spectacular brill effects, colours and shine. Amazing coverage. Around 300 colours – 15 different effect.

### 5. GIGA PIGMENT FINE POWDER

Extra finely ground, gigapigmented color decor creamy acrylic powder.

### 3. CHAMELEON POR

The popular Chameleon Gel in Acrylic Powder.



### 6. FULL DIAMOND POWDERS

Shine bright like a diamond! More stronger shining than ever before!



# PREPARATORY AND ADDITIONAL LIQUIDS





## CN CRYSTALSEPT ALCOHOLIC STERILIZER SPRAY AND REFILL

Adisinfektant for smaller, alcohol-resistant surfaces. It can be used as manicure, pedicure tools. (for the table, for stainless steel tools, files, and other alcohol-resistant and waterproof accessories to be disinfected). Antimicrobial spectrum: bactericide (MRSA), tuberculocide, fungicide, virucide (HBV, HIV inactivating). Available with a practical pump dispenser or as an economical 1 liter refill.



## CN CRYSTALSEPT HAND STERILIZER SPRAY AND REFILL

Directly applied by undiluted form to the hands or other areas of the skin to be disinfected. It is a bactericidal, antifungal, and antiviral agent. Antimicrobial spectrum: bactericide (MRSA), tuberculocide, fungicide, virucide (HBV, HIV inactivating). It is also available in a practical spray dispenser version or as an economical 1 liter refill.



## CN CRYSTALSEPT STERILIZING SOAP AND REFILL - NATURE, LEMON

Sterilizing hand washing soap. Antimicrobial spectrum-effect: bactericide, yeasticide. Available with practical, fresh Lemon scents.



## CN CRYSTALSEPT HAND STERILIZER GEL AND REFILL NATURE, ALOE VERA

These antiseptic gel can be use without water. These aren't just protects from the, "usual" bacteria but protects from viruses and fungus as well. Antimicrobial spectrum-effect: bactericide (MRSA), fungicide, tuberculocide. Available with practical, pumping dispenser Nature and Aloe Vera scents.



# PREPARATORY AND ADDITIONAL LIQUIDS

## XTREME FUSION ACRYLGEL THINNER

This new additional liquid was developed for Xtreme Fusion AcrylGel. It does NOT dry the fur of the brush and it does NOT have an unpleasant smell like the liquid has. It makes the colors more vivid.



## SPRAY PREP

A large amount of nail preparatory liquid in a practical pump spray form. It can be used as a hand and nail cleaning spray at the beginning of the treatment. Due to its degreasing effect it helps the adhesion of the template on the skin. For template building instead of Nail Prep we should use it as dehydrating cleaning liquid sprayed in the nails.

### CN advise:

In case of a cold and wet hand, use it more then 1 time, so the form could stick on the nail better.



1.

## NAIL PREP

Fungus preventive and dehydrating, PH-balancing preparatory liquid. Before using the Primer you have to wait until it dries completely. Its composition is the same as Spray Prep. Use it for building nails with tip



1.

## ACID PRIMER

Adhesion promoter liquid which distracts the moisture from the layers of the nail. After the drying of Nail Prep or Spray Prep it should be applied in a thin layer on the surface but before that the excess on the brush must be left on the bottle neck or absorbed by a dry towel. Due to its acid content it must not touch the skin. It must be fully dry because it completes its effect over time! If it gets on the surface in a thick layer the nail plate would only dry seemingly.



2.

## ACID FREE PRIMER

Completely acid-free, adhesion promoter liquid, which does not dry out completely it will still have a sticky layer. Therefore it should be applied in a thin layer, because this double-sided sticky part will function as an adhesive between the nail plate and the material that will be put on it. If we put more acidfree primer, this sticky bit will be thicker so the material on it will not stick on the nail plate and will peel off. The excess on the brush must be left on the bottle neck or absorbed by a dry towel so that no extra amount will get onto the nail.



3.

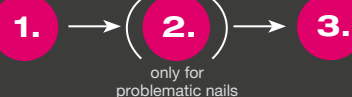
## NO BUFFER SCRUB – MILD AND SUPERFAST PREPARATORY

Mild and superfast preparatory liquid for CrystalLac. Newly developed preparatory material that makes the classic CrystalLac and the ONE STEP CrystalLac processes ever so mild. The No Buffer Scrub replaces the use of Nail Prep/Spray Prep and the Primer as well as the buffering at ONE STEP CrystalLac. It has a strong dehydrating and degreasing effect so the nail does not need any more preparation. Soak a fiber-free paper towel in No Buffer Scrub and rub the nail with it thoroughly. To have a better result after some fingers change the paper towel and get a new one.



It can be used in your own nail without buffing or matting.

USE THEM IN THIS ORDER:



# PREPARATORY AND ADDITIONAL LIQUIDS

## A- CLEANSER – GEL CLEANSING AND CLEANING LIQUID

## B- SECNTED CLEANSER – GEL CLEANSING AND CLEANING LIQUID

scented versions of the fixing liquid to get rid of the sticky layer after curing in case of gels and CrystalLac-s. Not only they leave behind beautiful glossy nails, but smell nice for a long time. In popular strawberry, tuttifrutti and cinnamon plum scents.

tuttifrutti  
cinnamon plum  
strawberry



PREPARATORY AND ADDITIONAL LIQUIDS



## PREPARATORY AND ADDITIONAL LIQUIDS

### SCENTED CRYSTAL NAILS TIP-, ACRYLIC AND CRYSTALAC REMOVER

Extra strong remover liquid for tip-, acrylic and CrystaLac with aloe vera, glycerine and panthenol. The aloe vera is nourishing and moisturizing the skin and the panthenol makes it so soft. In camomile and green tea scents.

use it with  
wrap foils

Camomile

Green Tea



### ACRYL REMOVER

Tip and acrylic remover liquid with lanolin that protects the skin from drying and becoming white. It contains three types of remover ingredients so the removing process is faster.

use it with  
wrap foils



### UNIVERSAL REMOVER KIT

With the help of the kit CrystalLac, tip, acrylic and nail varnish can be removed easily. The removing process is more effective and material saving.

The kit contains:

20 pcs remover foils

2 pcs orange wooden sticks (to push back the cuticle and remove the dead skin from the nail plate)

Acryl Remover  
soft touch buffer







# NAIL POLISHES AND NAIL CARE



## NAIL CARE

### FUNGUS STOP (ANTI-FUNGUS)

Contains tolnaftate, a super strong anti fungal substance. Rub one drop into each nail and the surrounding area.

15ml



### DEFENDER - QUICK DRY SHIELD

Creates a fast drying, hard layer on the top of the lacquer, prevents from chipping and abrasion. Makes the colors more vivid and shiny.

15ml



### XTREME HARD NAIL STRENGTHENER LACQUER

Creates a fast drying, hard layer on the top of the lacquer, prevents from chipping and abrasion. Makes the colors more vivid and shiny.

8ml  
15ml



### NAIL STAMPING PLATE CLEANER LIQUID

Nail stamping plate cleaner liquid removes stamping lacquer from your nail stamping plates. Gentle, does not damage nail stamping plates. Comes in a spray bottle for convenient use. Lemon scented.

100ml

Renewed! With fresh  
lemon scent

Acetone free! You can  
use as a nail polish  
remover.



### DROPPER DRY

Reduces the drying time nail polish. Contains cuticle oil. Apply only one drop per nail.

15ml



### SKIN GUARD LIQUID SKIN PROTECTION LIQUID

Skin Guard Liquid Skin Protection Liquid, peel off skin protector material, which protects the fingers against the nail polish or gels. It can be very useful in case of nail art. Easy to use: apply it around the nail, let it dry (the time of the drying could be different, depends on how thick is the layer and the temperature of the room). Make the decoration on the nail, and then peel off the product of your finger.

8ml



## CUTICLE OIL - NAIL CARE OIL

8ml  
15ml

1. Coconut
2. Pineapple
3. Peach
4. Vanilla
5. Kiwi



## CUTICLE REMOVER LIQUID

After 2 minutes, the solved skin can be removed with a cuticle pusher. It should not stay on the skin more than 5 minutes

15ml



## HIGH SHIN

Extremely high shine, fast drying top coat.

8ml  
15ml



## RIDGE FILLER

Protects with seaweed extraction, fills all the ridges with micro crystals and help the regeneration of the nails.

8ml  
15ml



This nail was made with Milky White Compact Base Gel and Holo-Ombre Transferoil by Roxana Sárközy-Eigner.



# NAIL CARE

## WEEKLY TOP COAT – 7 DAYS LONG SHINE, OVER NAILPOLISH

Apply it over your nail polish, so it remains shiny even for 7 days. With the Weekly Top You can expand the lifespan of your favourite nail polish! Dries very fast, no need for UV lamp. Remove it with nail polish remover.

4ml  
8ml



## UV TOPCOAT

Due to its components, it makes a hard and shiny top layer that hardens in 60 seconds in a UV lamp not completely dry). With patented formula.

15ml



## NAIL STRENGTHENER BASE COAT

Nail strengthener base coat, developed for weak nails, with calcium, vitamin E and B

15ml



## 2 IN 1 BASE AND TOP COAT

Prevents from yellowing, improves the adhesion of color polishes, gives you shine and protection.

8ml  
15ml





## SCENTED CRYSTAL NAILS NAIL POLISH REMOVER

Nail polish remover with aloe vera, glycerol and panthenol – in 1 liter and 100ml packaging. With its help, you can remove the nail polish easily, perfectly and fast, while it is gentle to the nails and hands. The aloe vera nourishes, the glycerol and panthenol make the skin soft. Rose and orange scents.

100ml  
1000ml

rose  
orange



## LACQUER CORRECTION PEN

normal  
with 3 spare tips



## CRYSTAL LACQUER CORRECTION PEN WITH SPARE TIPS

Crystal Nails quality, changeable tips.



## COAT THINNER

40 ml



## PLASTIC LACQUER HOLDER



# NAIL POLISHES

## DECORATION COLORS

Crystal Nails nail polishes have the optimal viscosity, you can apply them without remaining spots or lines. The perfect elaboration of the brush and the unique silver cap also help your work. Thanks to the long lasting formula, our lacquers are super abrasion-resistant. We put brand new colors, such as french, chrome, holographic and iridescent into pretty, narrow bottles. Contains protein, in order to strengthen the natural nails.

formaldehyd  
and toluol free

cn advise:  
the unique Crystal  
Nails Stamping plates  
are perfect for these  
colors: 17, 18, 25, 30,  
45, 55,  
63, 201.



# NAIL POLISHES

NAIL POLISHES



## 1. FULL DIAMOND COLORS

Shine bright like a diamond!  
8ml



## 4. DIAMOND COLORS

Magical journey to the infinite: discover the deep space.  
8ml

## 2. SKIN EFFEKT COLORS

Nail polishes with crazy skin-effect!  
8ml



## 5. MAGIC EFFECT COLORS

Amazing color blust! Discover the space!  
8ml

## 3. TINI EFFEKT COLORS

Sparkling, glittery effects, real girly nail polish.  
8ml



## 6. GLAMOUR COLORS

Prism technology, iridescent, multidimension colors.  
8ml

# NAIL POLISHES



## 6. GLAMOUR COLORS

Multidimensional polishes with prism technology.  
8ml

## 9. FRENCH COLORS

For traditional or modern French polishing.  
8ml

## 7. PARTY EFFECT COLORS

For celebration, events  
8ml



## 10. HOLOPRISM COLORS

Holographic color polishes, which have different effect from different angles.  
8ml

## 8. LIQUID CRYSTAL COLOR

Like a ray of sunlight on the water.  
8ml

## 11. COLOR2COLOR

The same number as GL polish.  
Vivid colors.  
8ml

this nail was made by Alexandra Ménéss





## STAMPING LACQUERS/ARTLAC

### STAMPING LACQUER

Nail polishes especially developed for stamping. They dry quickly and cover perfectly. The consistency is more thick, more pigmented polishes developed for the application of the nail stamp patterns: with them, even the smallest pattern can be applied, as it flows into the gaps of the plate.

4ml

**CN advise:**  
use Skin Guard  
on the skin  
around the nail!

**CN advise:**  
use these polishes with  
the Crystal Nails Stam-  
ping Plates!



white



Black



Pink



Red



Chrome Pink



Blue



Bordeaux



Chrome Gold



Chrome Silver

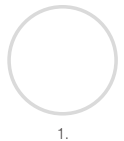


Chrome Pink

### ARTLAC-WATERBASED COLORS

From now on the Crystal Nails quality polishes are available in a decor edition: traditional lacquer are available in a water based version as well. There are slim, needle-sharp, super precision brushes for these technique, which are suitable for draw any kind of decoration or pattern.

3ml





# FILES



**XTREME FILES**

Due to the newest grain-adhesion technology, they are more durable than ever. The files are much stronger and more durable than the traditional files consisting of flexible grains.

**1. XTREME 100/180 (RED)**

BESTSELLER

**2. XTREME 150/150 (BLUE)**

For shaping and tip filing.

**3. XTREME 100/100 (PURPLE)**

For surface filing and removing color gels/acrylics

**4. XTREME 180/180 (GREEN)**

For matting and finer filing

Flexible grains: do not cause scratches, do not slip on the surface,  
it clings  
into the material.

**CLASSIC (ZEBRA) FILES**

Our classic (zebra) files are made with finer Japanese paper. Therefore, the number associated with them indicates a finer type of files than Xtremes.

**5. PROFESSIONAL 100/180 (RED)****6. PROFESSIONAL 150/150 (BLUE)**

For shaping, tip filing and matting

**7. PROFESSIONAL 100/100 (PURPLE)**

For edge filing and removing color gels/acrylics

**8. PROFESSIONAL 180/180 (GREEN)**

For finer filing and refining

HIT files with Japanese paper

CN advise: Finer than the Xtreme files  
with the same number.





# FILES

## TRADITIONAL FILES

1. **IRONX FILES 100/100, 150/150, 180/180, 150/180**  
Suggested for Fusion AkriGel, 150/180 grade, waterproof, halfmoon shaped, specially coated file, 4-5 times more durable than the regular files, can be disinfected, easy to clean with a nail brush. The surface is extremely durable and stronger than the similar numbered Xtreme files.
2. **ULTRA PROFESSIONAL**  
100/180
3. **STRAIGHT BLACK**  
100/180. Durable grit
4. **PINK**  
150/280. For natural nails.
5. **CURVED-STRAIGHT BLACK**  
100/180. Durable grit
6. **STRAIGHT WHITE**  
80/100 – for rough filing
7. **DROP**  
180/180. For matting
8. **DROP SHAPED FILE**  
for smile line - 100/150
9. **WOODEN FILE**  
120/180. For hardly accessible locations such as sidewall points. For manicures and acrylic nails.





## STAINLESS STEEL FILES

They have exceptional durability, thanks to the stainless steel material strong 80/120 grains and it's not just for natural nails. This product can be used for manicure and pedicure as well because of the rounded shapes and 2 kinds of grains. Try them on sculpted nails or making the smile line as well.

### 10. XTREME STAINLESS STEEL FILE, LONG STEEL FILES

approximately 16cm

For manicure and sculpted nails as well

### 11. XTREME STAINLESS STEEL FILE -SHORT

approximately 14 cm



If sometimes you cannot find – among your currently used materials and pieces of equipment – the file you need for the current step then we have good news for you! The 4x4 file kit is for you because it can be transferred into the file holder within a few seconds. Your file supply for a month can be kept in a practical holder: just tear down the top by the perforation and fold the two handles across each other towards the inside of the box so they will separate the file types.

The kit contains:

- 4 pcs Classic (zebra) Blue 150/150
- 4 pcs Xtreme Purple 100/100
- 4 pcs Xtreme Blue 150/150
- 4 pcs Xtreme Green 180/180



# BUFFERS

- 1. **NEW! IRONX BUFFER 100/180**  
A new member of the IronX family with 4-5 times longer lifetime than conventional buffers. The surface is water repellent - it can be 100% disinfected.
- 2. **FINING BUFFER, PINK**  
Stronger and more durable
- 3. **FINING BUFFER, WHITE**  
stronger, more durable
- 4. **BLACK-ORANGE BRICK BUFFER**  
100/180/180

- 5. **BLACK-PURPLE BRICK BUFFER**  
60/100/100
- 6. **WHITE BRICK BUFFER**  
180/180
- 7. **FINE MATTING BUFFER**  
200/200 grit soft, flat, rectangular buffer. It contacts the nail on a big surface, so matting the nail takes only a few swipes. Due to its softness, it lines perfectly with the nail arch for better use. We use this buffer to prepare the nails for CrystaLac before using the No Buffer Scrub or Spray Prep materials. Due to its softness it is gentle, does not file deep into the nails. If we use this buffer for nail preparation, it will be easier to dissolve CrystaLac.

Gentle  
Don't file! do a fine matting!  
CN advise: for preparing to CrystaLacs



1. **MAGIC SHINE FINE-BUFFER - 2WAY**  
600/3000

**CN advise:** use this product of its own for the beautiful shiny nails!  
In case of acrylic nails you can produce the finest result!

3. **MAGIC SHINE BLOCK FINE-BUFFER**  
600/3000. More thin than the others, the work is more comfortable with it. it is covering a lot of the nail surface at the same time.

More comfortable work

2. **MAGIC SHINE BLOCK FINE-BUFFER**  
600/3000. It covers a lot of the nail surface at the same time.

4. **„POLIRZÓZÓ”**  
Work is fun with the buffer with a picture of our founder, Zoltán Jákob.





# BRUSHES





## JEWEL BRUSHES

Highly quality, exclusive design, jewel effect - with a computer generated logo. These brushes have well-fixed handle parts, also they have caps of their own!

### GELLY GEL BRUSH

Synthetic gel brush. Thanks to its softer, longer and flat fur, it is easier to apply it. This brush is perfect for make the smile line and for royal and color gels, and to cover the whole nails.



### NERO MERLO II.

Soft, natural hair, excellent quality brush. The hair is a bit longer, than in 6 Gel brush. The precisely cut edge provides an accurate work. Due to its special form, it is an essential tool in the perfect, professional salon. Use with medium dense and softer materials such as Titanium Gel, Builder Gel I-II, Cover gels or pink builder gels.



### NERO MERLO III.

Natural hair, harder type, excellent quality. Short and wide head. The hair form and length is like in Firm Gel brush. The precisely cut edge provides an accurate work. Use with denser builder gels such as Xtreme Clear and Xtreme Pink.



### XTREME GEL BRUSH

Synthetic hair gel builder brush with 1mm longer hair than in 6 Gel brush. Use with medium dense and softer materials such as Titanium Gel, Builder Clear I-II, Cover gels, pink builder gels or white gels.



### 6 GEL BRUSH

Synthetic hair gel builder brush. Use with medium dense and softer materials such as Titanium Gel, Builder Clear I-II, Cover gels, pink builder gels or white gels.



### 4 GEL BRUSH

Small gel brush with synthetic hair. Use mainly for color materials but also for white builder gel.



### FIRM GEL BRUSH

Wide and thick so harder brush with synthetic hair. Specially designed for dense builder gels. Use with Xtreme Clear and Xtreme Pink.



## ACRYLIC BUILDER BRUSHES

### THE BIG ONE – GIANT ACRYLIC BRUSH

Natural hair for experienced acrylists. The high quality hair has an excellent absorbency. The pointy peak provides precise work. Harder hair, greater compressive force. With a light wooden



### XTREME (HARDER) ACRYLIC BRUSH

Size 8, flat professional builder brush with natural hair for experienced acrylists. Made of harder, higher quality hair which has greater absorbency and compressive force.



### A8 ACRYLIC BRUSH

A size 8 acrylic builder with natural hair. Made of softer Size 8, flat professional builder brush hair. Also for less experienced acrylic users.



### A6 ACRYLIC BRUSH

A size 6 acrylic builder with natural hair. Due to its small size you can use it for color materials. Made of softer hair.



## PAINTING DECORATION JEWEL BRUSHES

### LOOP PAINTING DECORATING JEWEL BRUSH

Synthetic brush with soft hair at the tip specifically designed for color fading with gel. It is easy to paint the next motives like flower, butterfly, butterfly bow. It doesn't leave stripe on the material. You can make cambered patterns easily. It is good for soft and thick material as well.



### PHANTOM PAINTING DECORATION JEWEL BRUSH

Gel nail art brush with natural hair. Therefore, it can be used for gel, acryl, aquarelle painting as well. Perfect for creating the color mash, because of its size and softness. Slightly bulkier than CN Art Design brush.



### ART DESIGN BRUSH

This thin, precise brush has a shortest and natural hair (5mm), which allows us to work with it easier. For contouring and precise painting. Good for water-based paints and gel painting as well.



### BARBARA II. BRUSH

This short, precise, slight brush with natural and pointy (7,5mm) hair allows us much more control over itself. This brush strongly recommended for making very thin lines and contours.

Use this for water based paints but you can use it for gel paintings as well.



### AQUARELL BRUSH

Synthetic 10mm hair. For aquarelle painting the special form and quality hair provide easier control. For painting gradients both on a small and big surface.



## GEL DECORATING JEWEL BRUSHES

### OMBREPRO BRUSH

Synthetic brush with thinner hair at the tip specifically designed for color fading with gel. Due to the head's enhanced width it makes color fading a lot easier. By using tapping movements you can create a perfect ombre effect. These brushes are perfect for Royal Gels and gel polishes.



### NERO MERLO 0 BRUSH

Natural soft hair with a round tip. The form and design provide precise work. For color materials, detailed painting and small surface. Due to its form it is easy to create the edges and gradients on the color gel's surface.



### NERO MERLO I. BRUSH

Natural soft hair with round flat tip and high quality. Cover the entire nail surface for fast color gel paint. Its natural hair and the precise sharp form on the side make it is easy to create the cuticle and the smile line as accurately as possible so it will not touch the skin.



### BARBARA I. BRUSH

Synthetic hair and pointy peak. For decoration, small, precise artistic work. The 6,5mm hair provides easier control to create patterns and contouring.





## GEL PAINTING JEWEL BRUSHES

### 0 MINI BRUSH

Synthetic hair, very thin, for flexible gel decoration. Length: 3 mm



### 0 SHORT BRUSH

Synthetic hair, very thin, for flexible gel decoration. The 6mm hair provides easier control to create gel patterns, smile lines and contouring. Less experience users may use another 0 short brush to paint contour lines with aquarelle.



### 0 LONG BRUSH

Synthetic hair, very thin, flexible gel decoration brush. With 10mm hair. For creating gel patterns and smile lines.



### GEL 3 BRUSH

Synthetic hair, gel decorating brush. Thanks to the sidelong top, it could easily create a color transition with sparkling gels and it is perfect for wiping the smile line.



## ACRYLIC DECORATION JEWEL BRUSHES

### A3 ACRYLIC DECORATING BRUSH

Natural hair, flat, pointy peak. Length of the hair: 11mm, width: 5mm.



### MINI 3D ACRYLIC DECORATING BRUSH

Natural hair, flat, pointy peak, high quality acrylic decoration brush. Length of the hair: 8mm, width: 4mm. The acrylic nail art brush with the smallest hair, for creating precisely the smallest patterns.



## ONE MOVE DECORATING JEWEL BRUSHES

### ONE MOVE I+ BRUSH

With synthetic hair, specially designed for the one move technique. Bigger size with asymmetrical hair. Length of the edge: 4,5mm.



### ONE MOVE II+ BRUSH

With synthetic hair, especially designed for the one move technique. Smaller size with asymmetrical hair. Length of the edge: 3mm.



### ONE MOVE IV+ BRUSH

We have been waiting so long for the fourth member of the team One Move! A real essential product, with improved mini sized hair and edgy ending for the more precise work in case of small patterns or small nails.



**GEL 4 BRUSH**

Synthetic hair, small size, straight edge, flat gel brush.

**GEL 6 BRUSH**

Medium sizes, synthetic hair, straight edge, flat gel brush.

**3D GEL BRUSH**

Synthetic hair, rounded edge, flat gel brush. Especially for 3D gels.



This nail was made with Milky White Compact Base Gel and Holo-Ombre Transferfoil by Roxana Sárközy-Eigner.



## BRUSHES

### ACRYLIC 6

Natural hair, small size. Acrylic builder brush.



### ACRYLIC 8 BRUSH

Natural hair, soft, medium size acrylic builder brush.



### SHORT HAIRD DECORATING BRUSH

With thin natural hair and pointy end for nail art.





**NEW! COLORANT BRUSH KIT****A brush kit for Pigment Powders**

With these synthetic brushes will be easy to apply the pigment powder onto the nails. This kit contains 5 synthetic brushes.

**BIG BRUSH KIT**

2pcs of synthetic haired brush.

The kit contains: sidelong, flat brush (mini, small, big) straight flat brush (medium, big) nail art brush (mini, short, medium) cat-tongue brush (medium) fan brush long hair brush extra pointing brush

You can find a brush for almost every line-thickness and pattern in this one kit.

Crystal brushes, with a fine quality hairs for beginners. Pretty looks, low prices.

**CRYSTAL NAILS ORANGE BRUSH CLEANER****For the most permanent decor brushes**

A highly effective cleaner tool to extend the lifetime of your brushes. If you wash your acrylic or aquarelle brushes with this cleaner, their hair will fall out only much later. This liquid dissolves the dried substance from the brush. You will see, your brushes will last longer!

30ml

With a nice orange scent

Made in Germany!

An advise:  
After using a transferfoil glue or the Chro'Me CrystaLac, clean your brushes with the Crystal Nails Orange Brush Cleaner and prevent the hair became sticky



## BRUSHES

### SILICONE RHINESTONES BRUSH KIT (3PCS)

Silicone brushes with sparkling rhinestones with inside of them. These brushes are developed for specifically for Lace gels. 5 different tops.

CN advise:  
It is perfect for applying  
ChroMirror pigment  
powders as well!



### ADDITIONAL SPONGE HEADS FOR OMBRE STICK



### SPONGE OMBRE STICK

Replaceable sponges on both ends. Comes equipped with four sponges you can buy separately. Perfect for creating beautiful color gradients on any base coat with Art Gel and RoyalCream Gel and for Baby Boomer gel polishing with Cover Pink Base Gel and White Art Gel as it marvelously blends Art Gel.

Keep your brush  
locked away from  
the sunlight and  
horizontal position  
after using and  
cleaning it.

How to clean sponges:  
dip the sponge in a drop of  
Cleanser, dry it with a paper  
towel. The sponge will be back  
to its normal size in an hour (can  
be less if wrapped into paper  
towel). Wait for the  
sponge to completely dry before  
using the stick again!



Perfect Baby Boomer gel polishing in 2 steps:

apply White Art Gel onto Cover Pink Base Gel to create a mesmerizing gradient! Top it off with a top coat , and you're done! (Alexa Mész)z)

**BRUSH HOLDER, WITH 2 SIDES**

Portable brush holder with hard cover. Its specialty that you can store your brushes on both sides. You can separate your acrylic and gel brushes, or the builder and nail art brushes. With embroidered silver Crystal Nails logo.

**BRUSH-CASE****BRUSH HOLDER - HARD COVER**

Hard cover, portable, propped out, nice and useful brush case envied by many.

**BRUSH HOLDERS****BRUSH HOLDER - LEATHER**

Beautiful, pink brush holder that can be open in the middle, where you can put your favorite picture.

**BRUSH HOLDER**

Practical holder for builder and decoration brushes, so you will always easily reach the brushes you need and keep them together. For five brushes, in 2 colors.

Silver  
Pink



Keep your brushes  
close by you and  
organized

## CLASSIC TIPS

### 1. NATURAL/STRAIGHT (CLASSIC)

100pcs 1-10  
Refill (50pcs)

### 2. CLEAR

100pcs 1-10

### 3. CURVED (HALF-HAWK)

### 4. FRENCH

100pcs 1-10

### 5. DISPLAY TIPS - COVER PINK OVAL

Ideal shape and size tips for practicing.  
Thanks for the cover pink color, doesn't requires any base color.

### 6. STILETTO TIP

### 7. DISPLAY STILETTO TIPS

For practicing, showing samples for guests or for your portfolio. Curved Stiletto in size 1-2, in matte white and transparent colors.

Matt white  
Clear

### 8. CLEAR TIP FOR XTREME FUSION ACRYLGEL

This product developed for the Xtreme Fusion AcryGel. More flexible than usual tips. 12 different sizes. The box contains 120pcs of tips. you can use a tip more than 1.  
120pcs

### 9. BRUSH ON GEL TIP GLUE

Extreme strong glue with brush. Thanks to the brush you can work with it easily and you can put the right amount to the surface.

10g

### 10. BRUSH TIP GLUE

Super strong, extra quick glue with brush. You can work very accurately with its special brush.

7,5g

### 11. NAIL GLUE

Beaked tip glue, superstrong.  
3g







# FORMS



## CRYSTAL FORMS



### WONDERFORM

Holds any angles perfectly, provide strong adhesion.

### WONDERFORM LONGPRO

For extreme long nails and competitions.

Provides specifically for flawless nail form application. Hard material holds any pearl white angle perfectly, yet it is easy to shape. This longer version of our WonderForm especially developed for extreme nails and competition. Thanks to its unique layering, it holds its shape like a rock and provides strong adhesion. Easy to cut despite the thicker material. Thanks to its almond-shaped dent, it is easier to adjust to the arc of the natural nail. Cutting it at the stress points is not necessarily required, it is more than enough to push it under the nail on account of its superb strength and its ability to push down the skin at the stress points (which is a huge plus when dealing with deep stress points).

30 pcs, 200 pcs

30 pcs, 200 pcs

Easier to adjust to the arc of the natural nail thanks to its almond shaped dent!

CN advise: you can easily shaping these forms in rubber gloves as well!



### CRYSTAL NAILS FROM

Unique quality, strong adhesion, optimal curve and clear, visible scale. Ideal for salon work, and for sculpting salon nails with natural length. Size: 38x56 mm, free edge length 21 mm.

50pcs  
500pcs

Made in USA! – extraordinary quality



### XTREME BUTTERFLY FORM

Unique quality, strong adhesion, optimal curve and clear, visible scale. The most popular Crystal form. Ideal for salon work, and for sculpting salon nails with natural length and also for longer, extreme shapes. Size: 60x60 mm, free edge part 28 mm. 2 cm wider and almost 1 cm longer free edge than the Crystal Nails form.

30pcs  
300pcs

Made in USA! – extraordinary quality

Form of the olympic champions



### CRYSTAL STILETTO FORM

Unique quality, strong adhesion, optimal curve, extreme length and specially visible scale. No more form extension: its shape helps to build Stiletto nails. Narrow it down along the black and silver line, this helps shaping the form. The popular USA paper, Crystal curve. Size: 62x79 mm, free edge length 45 mm.

30pcs  
250pcs

Made in USA! – extraordinary quality

## CRYSTAL FORMS AND ACCESSORIES

### 1. FORM DISPENSER

You can make your work easier with a from dispenser: the plastic holder will make it easy and simple. This product will separate the forms from the paper.

### 2. PREMIUM C-CURVE KIT

This tool holds the bent shape for the curing time. Thanks to the transparency, the UV light can go through.

The kit contains: 5pcs of different sizes of C-curving sticks with diamond dust on the top.

### 3. C-CURVE HOLDER - BLACK

It could be a problem if the sculpted nail wouldn't want to hold their shapes for its own. That's why this product is a big help for us: holds the sculpted nail to the curve what we want to achieve.

### 4. C-CURVE HOLDER - CLEAR

This products can help you holding the c-curve during the curing. Because of the transparency, it lets through the UV light.

### 5. C-CURVE HOLDING CLIP

If you would like to the nail has a nice arch, you have to bend it. This product will help create a nice, curved shape.



## PROFESSIONAL METAL ACCESSORIES

### PROFESSIONAL SCISSORS

Stainless steel -  
exclusive quality for professionals

6. NEW! XTREME  
ERGOSHARP SCISSORS.

7. PROFESSIONAL  
CUTICLE SCISSORS

8. PROFESSIONAL  
XTREME CUTICLE  
SCISSORS

Also for form shaping/cutting

9. PROFESSIONAL  
NAIL SCISSORS

### SOLINGEN SCISSORS

Chromium steel. Tradition and  
quality.

10. MANICURE AND  
CUTICLE SCISSORS  
- SOLINGEN

11. MANICURE  
SCISSORS -  
SOLINGEN

### JAPANESE STEEL SCISSORS

Japanese quality, with long lasting  
cutting edges

12. NAIL SCISSORS -  
JAPANESE STEEL

13. UNIVERSAL NAIL  
SCISSORS -  
JAPANESE STEEL

14. GOLDEN SCISSORS CUTICLE  
SCISSORS -  
JAPANESE STEEL

### CLASSIC SCISSORS

Stainless steel

15. CN NAIL SCISSORS  
Stainless steel

16. NEW! DOUBLE-ENDED  
PEDICURE FILE

This new product is for cleaning  
healthy and overgrown nails and  
the cuticles around the nail.

17. NAIL CLIPPERS

Nail clipper for natural  
nails or shortening artificial  
nails. Especially useful for  
extreme shapes and nails  
that does not fit in the  
tipcutter. With a practical  
case that collects the nail  
bits.

18. CUTICLE AND  
FINGERNAIL  
CLIPPER





# PROFESSIONAL PEDICURE AND MANICURE METAL TOOLS

ABSOLUTELY STAINLESS TOOLS MADE OF SURGICAL STEEL WITH HANDMADE REFINEMENT AND MADE RESISTANT WITH HEAT TREATMENT

## 19. NEW! EXCAVATOR

A tool which makes the pedi technician's job so much more! Use it for cleaning the nail grooves, ingrown nails treatment and cleaning.

## 20. PROFESSIONAL CUTICLE PUSHER AND SCRAPER

## 21. CRYSTAL DECORATING NEEDLE

## 22. FLEXI MIXING SPATULA

## 23. C-CURVE TWEEZERS

## 24. STAINLESS STEEL TOOL HOLDER

## 25. FLEX CUTICLE AND FORM SCISSORS

Interesting mechanism: the springy handles open the scissors for us thus they are easy to control when cutting cuticle or forms.

## 26. TIP CUTTER

Light tip-cutter with a curved head and edge. With its curved edge it will not flatten the tip.

## 27. BARREL SPRING FINGERNAIL CLIPPER

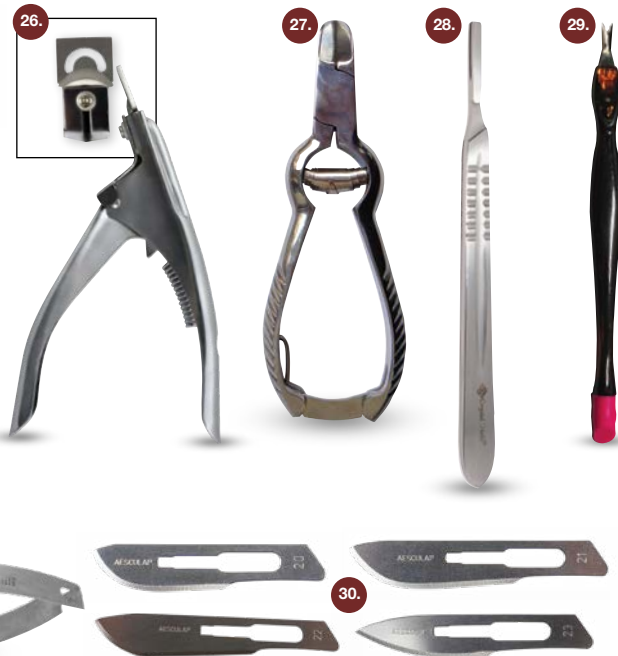
Big

## 28. STAINLESS BLADE HANDLE

For disposable blades.

## 29. CUTICLE PUSHER

## 30. BRAUN PEDICURE BLADES



## PROFESSIONAL ACCESSORIES

### 1. SOFTENED WIPES

The new version of the multi-layer paper wipes. Better pressing for a more precise work, smoother surface.

500 pcs

You can use the box as a dispenser!

### 2. SOFT NAIL WIPES 100 PCS

Folded to 5\*5 cm pcs

### 3. SOAKING THIMBLE FOR ACRYLIC AND CRYSTALACS

10pcs

### 4. LINT-FREE NAIL WIPES

3-4 fingers/pc

### 5. NAIL WRAP REMOVER FOIL

Already shaped for specifically to soak-off acrylic, CrystalLac or Easy off.

100pcs



## 6. CLEANSER PAD - LINT-FREE PADS SOAK IN CLEANSER

Lint-free pads soaked in Cleanser. Facilitates faster salon work. Perfect for on-the-road nail techs, provides a 2-in-1 alternative for cleanser and lint-free towels. A single Cleanser Pad – depending on nail length – is enough for cleansing 5-10 nails.

## 7. THREAD GLOVES

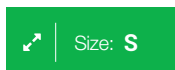
The elastic fingertips ensures a better grip. The textile part ensures the perfect ventilation so they are more comfortable than the rubber gloves.

# PROFESSIONAL ACCESSORIES

## 8. POWDER-FREE, DISPOSABLE NITRILE RUBBER GLOVES

Perfect quality, super elastic, black nitrile gloves. They have pleasant touch and are lightly powdered. 100 pcs in a box.

100pcs

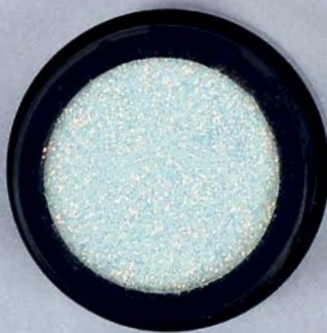


CN advise:

You can see better the color of the One move acryl-paint, if you try on the surface of the Powder free, Disposable Nitrile Rubber Gloves



# NAIL ART





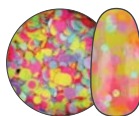
## BUILD-IN DECORATIONS

### NAILFETTI - DECORATION GLITTERS

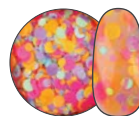
Round, the size and colors are mixed and random. You can use on any sticky (non-cleansed) surface: be a gel polish or sculpted nail.



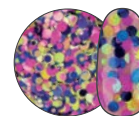
Nailfetti 1



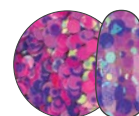
Nailfetti 3



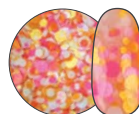
Nailfetti 4



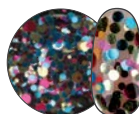
Nailfetti 5



Nailfetti 6



Nailfetti 7



Nailfetti 8

Nailfetti 10  
Rainbow Clear

### NAIL DECORATION GLITTER

Shape of a lozange, equal sizes nail decoration glitter. Use it before curing and in order to avoid the movin of the glitters while you working, apply a thin, sticky layer to the surface. After curing, needs to be covered in 2 layers. 2 Holo colors!



Holo pink

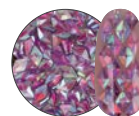


Holo silver

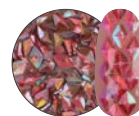
### 3D NAIL DECORATION GLITTER

One of the top hits of the summer and it has 3D shape! Exciting iridescent Violet and Peach version of colors!

Use this way: apply a thin layer of thick clear gel (Compact Base Gel, Gem Glue Gel) and place the glitters in a way you want. Cure it, and cover it and make sure that the edges of the glitters blend in properly and the surface of the top gel is smooth enough.



Violet



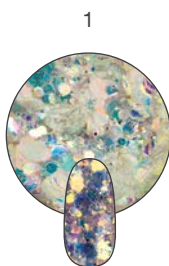
Peach

### NEW! GLAM GLITTERS!

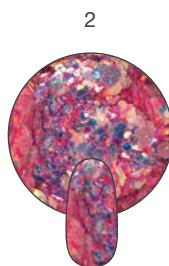
Our Glam Glitters collection has a holo-effect now as well!

Get the the new sparkling glitter and powder decorations, and make your customer's nails sparkingly colorful!

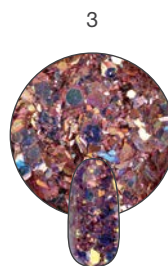
CN advise: mix it with Compact Base Gel, and apply on the surface of the nail that way!



1



2



3



4



5



6



7



8



9

# BUILD-IN DECORATIONS

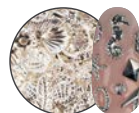
## NEW! SNOW DECORATION FLAKE

Make unique winter nails with the new Snow Flakes with the help of tiny decorative sequins. Hexagon and round white shapes, which can transform a simple nail to a festive splendor. CN advise: Also suitable for built nail and gel polish decoration. Tap it into a sticky layer or mix with Clear Compact Base Gel and apply it to the nail surface.



## GLAM SELECTION

There are hundreds of different shapes and themes in a selection you can use well in the spring-summer months. If it does not fit the nail surface just bend them. If you fix it to Gem Glue Gel or Compact Base Gel you will get a lasting color and if you use a thin layer of highshine the result will be durable as well.



Glam Selection 1  
Silver



Glam Selection 2  
Rosegold



Glam Selection 3  
Tropical



## GLITTER POWDER - SMALL

The tiniest and finest cells in gold, silver and bordeaux colors.



47



48

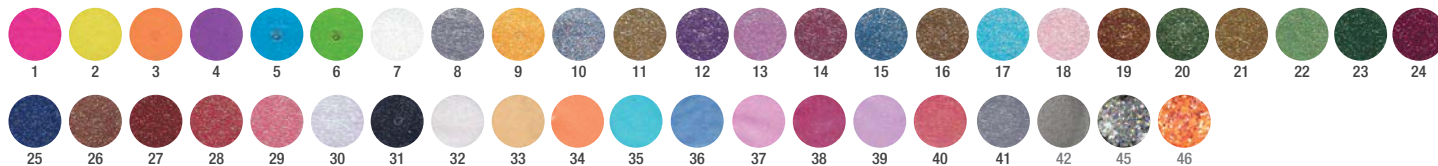


49

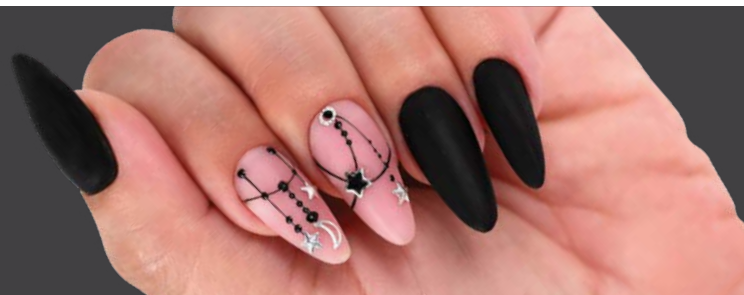


50

## GLITTER POWDER - BIG



This nail was made with Xtreme Fusion Acrylgel Cover Pink, 3S12  
3Step CrystaLac, Black Bubblegum Color Gel and Mattever  
Matte Top Gel by Mónica Majnik.



## CHROMIRROR PIGMENT POWDERS

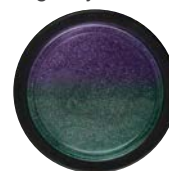
Breathtaking chrome pigment powders are still on the top of the A-list! The use of the ChroMirror Chrome Pigment Powders is easy: apply the powder on a non-cleansing, sticky surface – Royal Gel, 1S/3S CrystaLac, 0/clear ONE STEP CrystaLac, Super Shine Optic and Xtreme Top Shine – cure 80% of the full time, rub it nice and shiny, file the free edges, cover it with Acid Free Primer, then close the free edges and cover it with flexible top gel (Cool Top 4 Dark, Cool Top Gel Universal, Top Seal Gel, Top Seal Light).



## CHROMIRROR TIGER EYE GREEN

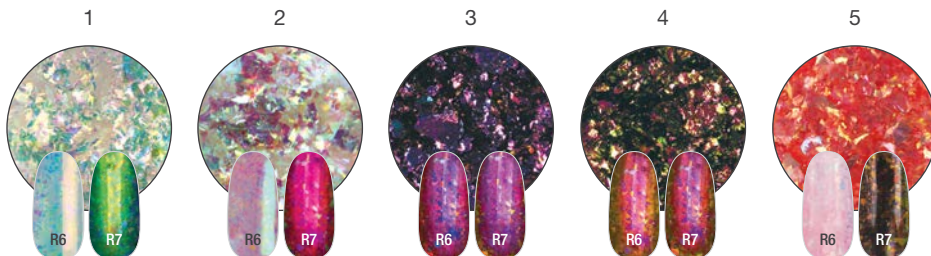
It works as TigerEye - mix with a few drops clear gel. You can shape it with magnets before curing it. But, beware: it won't have the usual TigerEye result, but it will have a sparkling, multidimensional, chameleon rainbow effect. You can use any gel polish and any colors as a base. If you rub it into a non-cleansing surface, as a ChroMirror powder, you will get the most homogenous chrome surface ever.

Tiger Eye Green



## CRYSTAL FLAKE

Extremely reflective flake. Apply on a non-cleansing, sticky surface, cover it with Acid Free Primer, then cover it and close the free edges with Cool Top Gel Universal. You can build in the nail as well: in case of acrylic, after you pick the acrylic with your brush, dap it into the jar of the flake and then you can apply to the nail. In case of builder gel, mix the gel and the flake and then apply it to the nail.

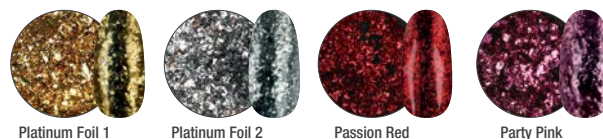




# DECORATIONS FOR CLEANSING SURFACE

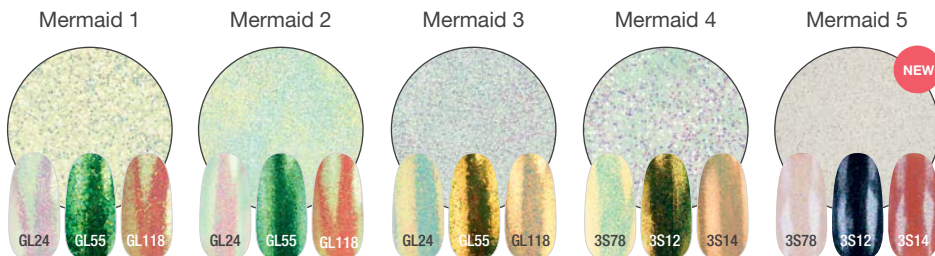
## PLATINUM FOIL

It has smaller pieces than Crystal Flake. Using different methods, you can achieve different results with this product. If you apply it on a non-cleansed, sticky surface, you can achieve a foil-effect, but if you apply it on a non-cleansing, smooth surface, you can get a chrome-effect. We have 4 fabulous colors!



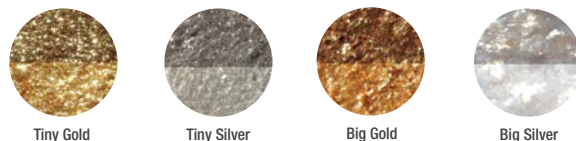
## CRYSTAL MERMAID POWDERS

Spring Sparkle: cheer your customers up with longlasting shine! No one can look away from their nails if you use it.



## MICA

Interesting sparkling effect, flat random shaped pieces with minerals on it.



## NEON PIGMENT POWDERS

These powders are the perfect choice for ColorVortex (smokey-effect), ombre and marble techniques. They have so vivid shades, you could actually go insane!



This nail was made with 1S86 One Step CrystaLac, 3S99 3Step CrystaLac and the Mermaid Powder 5 by Dóra Kesztyűs.





## DECORATIONS FOR CLEANSING SURFACE

### XTREME TRANSFERFOILS - EASIER TO PEEL OFF, BRIGHT COLORS

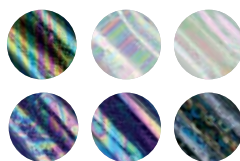
Brand new, extra thin and very special foils with the best adhesion ever! They stick perfectly so foil technique has never been so easy. The new foils are good for covering even the whole surface of the nail without any gap between them. By making thin patterns we can create jewel - like embossed decorations combining it with foil gel. Available in amazing colors. Length: 50 cm.

CN advise:  
Use Cool Top Gel  
Universal to cover, in  
order to a maximum  
shine!



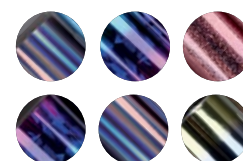
### TRANSFERFOIL SET – HOLO-PEARL

Transferfoil with pearl effect collection what you can apply on almost every surface with the Pro Foil Gel. It contains marvel, flitter, star shaped foils and these could be used for the holiday season perfectly.



### NEW! TRANSFERFOIL KIT – HOLO-OMBRE

Are you crazy about transferfoils too? Then we have a good news for you! Our new selection of holo and ombre effects are waiting just for you! It can be applied to any surface easily with Pro Foil Gel. This kit contains different and colorful transferfoils in cheerful spring shades. Leave the melancholy and be fabulous with the new Holo-Ombre Transferfoils!



### PRO FOIL GEL CLEAR

This is a transparent gel for transferfoils and thanks to the density it can be easily used to make more convex patterns. You don't have to count the seconds during the curing, thanks to the excellent adhesion.

When creating a pattern, there is no problem if one part of the line is convex and the other is flat. Cures and adheres equally. Use as pattern for Xtreme metallic foils or even for a complete surface. Because of the transparency it will not stand out anywhere on the edges or in hard-to-reach areas. If you work with non-cleansing colors, use Pro Foil Gel and make foil decoration on the nails!



### XTREME TRANSFERFOIL GEL - ADVANCED FORMULA

Thick, easy-to-use, easy-to-shape. It cures equally in UV or LED lamp in 10-30sec (depends on the quality of the bulbs).

Easy to use: get a thin brush (e.g 0 short or 0 Long brush) paint a pattern what you want, cure it for between 10-30sec. After that push the bottom of the foil strong against the nail, then with a firm move, remove it fast from the surface and you're done!



CN ADVISE:  
The cure time is  
depends on the type  
and quality of the UV/  
LED lamp and how thick  
is the layer of the foil  
gel. Experiment a little  
before using it with a  
customer!

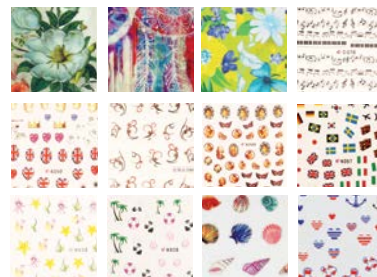
# STICKERS

## NAIL STICKERS

If you don't have time a proper nail art, use these stickers instead and make your customer's nail funny and goofy stickers.

LIMITED

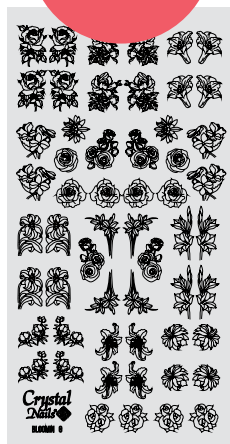
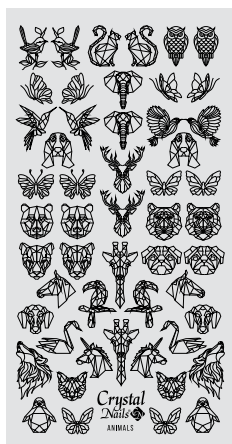
In order to get more durable result, buffer the surface, apply 1 layer of acid free primer and after that, put the sticker on. Push it gently, file the unnecessary part of the sticker from the edges of the nail, and apply 1 more layer of Acid Free Primer. Cover it with 2 layers of top gel.



## COLORING BASE STICKER

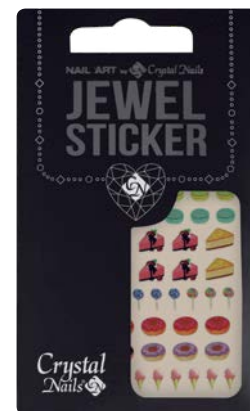
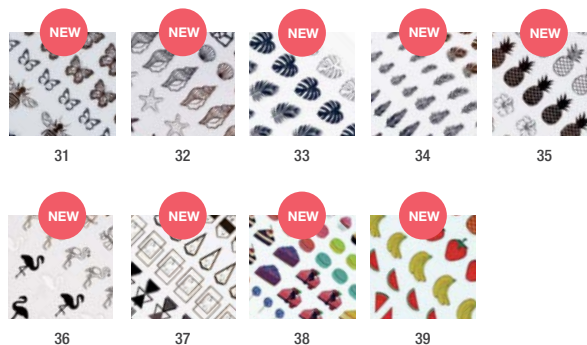
Several base sticker, which can make easier the decoration for you. It gives you the leading lines, contours for the coloring. Easy to use: cut the nail shape, and the help of a little bit of water, remove the sticker. 2 designs, black.

CN advise: for coloring, use RoyalCream Gels!



## NEW! JEWEL STICKER

A self-sticky, easy-to-use jewel sticker that fits perfectly on the nail surface thanks to the thin and elastic material. It will stick better to a glossy, dry surface: 3S CrystaLac and OS, or 1S CrystaLac without top gel. On GL CrystaLac only after fixed top gel. Cover it with Cool Top Gel Universal or Cool Top 4 Dark.



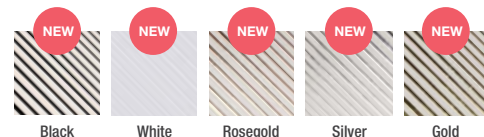
## NEW! STICKERUP TWEEZER

Sticker pick up tweezer with a silicone head at the end to help put the sticker on the nail and to squeeze the air from underneath.



## NEW! MAGIC STRIPES STICKER – GOLD, SILVER, ROSEGOLD, BLACK, WHITE

Unleash your creativity and make metal decorated nails easily with the new Magic Stripes stickers. Easily bendable stickers. Besides the 2 basic colors (black, white), there are 3 other, holiday colors (rosegold, silver, gold).



## ON-SURFACE USEAGE WITH GEM GLUE GEL

### NEW SWAROVSKI RHINESTONE

Shine bright like a... queen! These rhinestones are in ideal sizes and in bestseller Crystal and Crystal AB colors and makes even the simplest nails spectacular!

- 1-2 Corn
- 3-4 Long Drop
- 5-6 Lozenge
- 7-8 Square



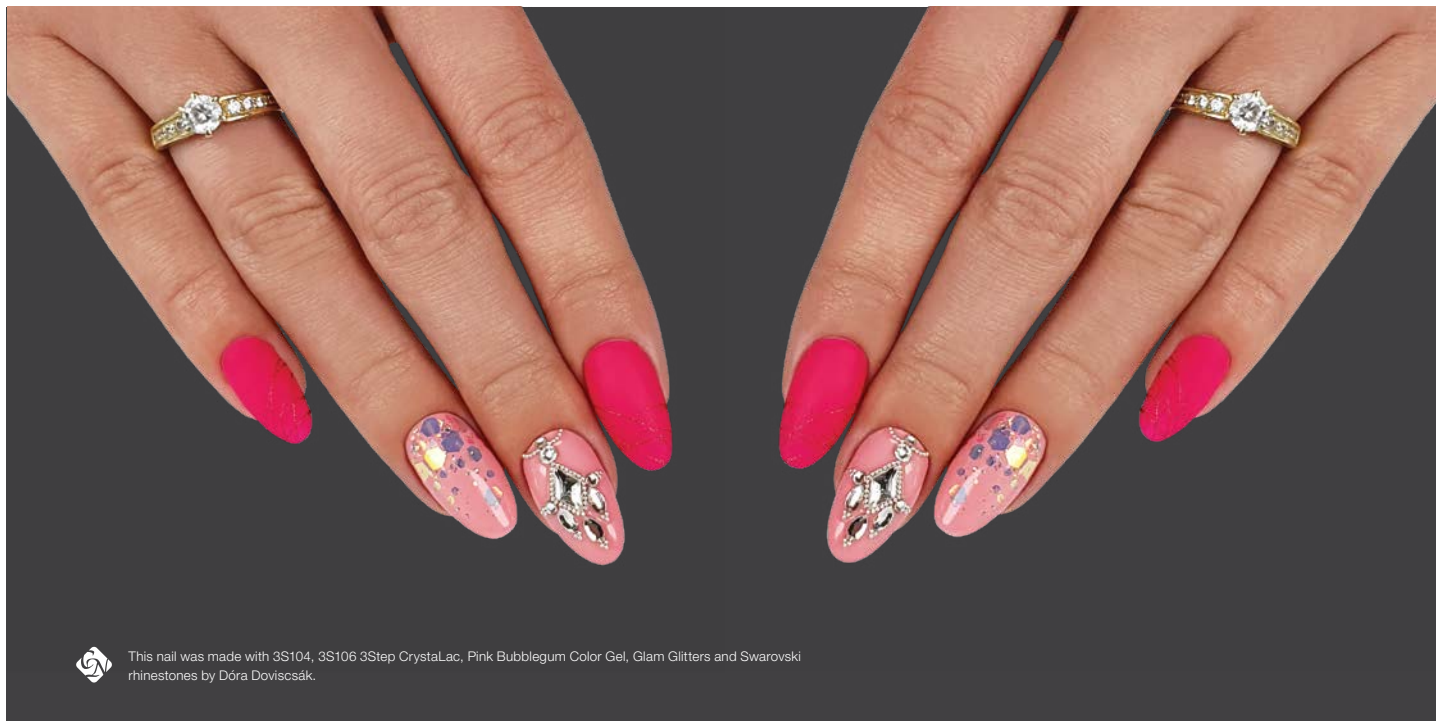
### GEM GLUE GEL – soak-off glue gel for gluing the stones

Perfect consistence, easy-to-use, soak-off, cleansing glue gel. The stones, beads are not slipping away. It needs to be cured in UV/LED lamp, and the surface will be shiny when it is cured.

Cure time  
UV: 2-3min  
LED: 1-2min



The stones are not slipping away.



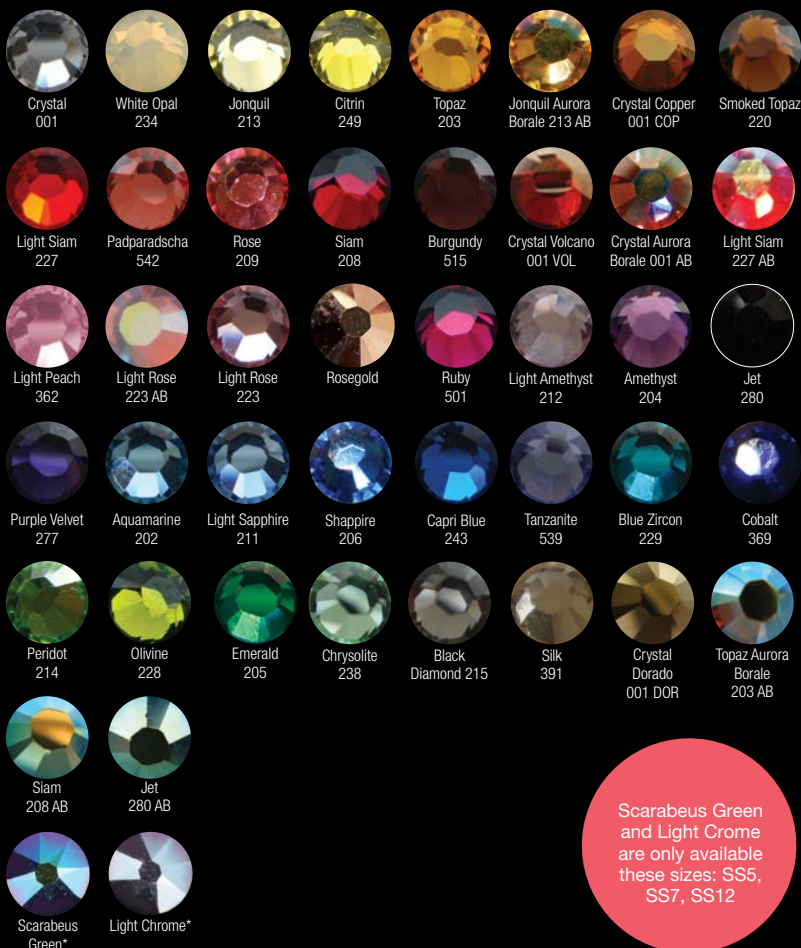
This nail was made with 3S104, 3S106 3Step CrystaLac, Pink Bubblegum Color Gel, Glam Glitters and Swarovski rhinestones by Dóra Dovicsák.

# ON-SURFACE USEAGE WITH GEM GLUE GEL

## CRYSTALLIZED™ – Swarovski Elements 14 SIDED POLISHED ORIGINAL CRYSTALLIZED™ – SWAROVSKI ELEMENTS



All colors in SS 5 size. The majority of the colors can be bought in smaller and bigger sizes (SS3-SS16).

Realistic dimensions:



## SWAROVSKI STONE SHAPES

14 sided polished, original crystals.

square		colors of 4 mm		10pc
star		colors of 5 mm		10pc
flower		colors of 5mm		10pc
butterfly		colors of 8 mm: Crystal Antique Pink és Denim Blue		pc
round 40		colors of ss40		5pc

## MICRO SIZE RHINESTONE

Smaller even the size of SS1, 1mm rhinestones in rainbow color.



## RHINESTONES PICK UP AND REMOVE WAX PEN

Filled with sparkling rhinestones, practical 2-sided product for pick up and remove rhinestones. Easy to clean the vax head of the product, and it makes easier to pick up the stones fast.



Scarabeus Green and Light Crome are only available these sizes: SS5, SS7, SS12



## NEW! OPAL RHINESTONE IN MIXED SIZE

This milk-ish sparkling collection will be your compenions even at the winter season. Create a cool Snow Queen style nails and make your customer trendy for every season. It comes with an elegant black jar, in different sizes: 40 pcs SS5, 30pcs SS8, 20pcs SS12, 10pcs SS16.



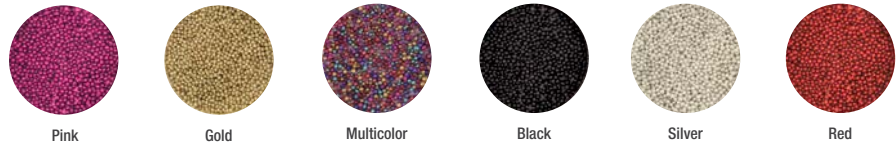
## SMALL METAL BEADS

Durable small, metal beads (except the white, but the durability is the same). The diameter of them is approx. 0,6mm. The specialty of these beads that they are not just colored on the surface: the whole bead has the color what you can see. So basically the material has that color, so this way the color of this product will not fade, not even several weeks after the nail was made. If you would like to reach the maximum durability, use Gem Glue Gel, Compact Base Gel or Cool Top Gel Universal for a base material.



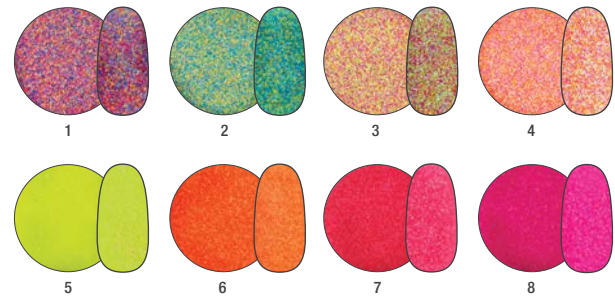
## TINY BEADS

Smaller than the smaller versions of our usual beads and they have vivid colors.



## CRYSTAL SUGAR POWDER

It's like sugar! Small random shaped particles, for Sugar-effect techniques. You can reach a special kind of sugar-effect if you use this product for the whole surface of the nail: it will looks like if your customer would dip their nail into sugar. Apply it to a sticky layer and then cure it.



This nail was made with 1S96 One Step CrystaLac, 3S76 3Step CrystaLac, RoyalCream Gel 08 and Silver Beads by Dóra Dovicscsák.



## ON-SURFACE USAGE WITH GEM GLUE GEL

### NEW! FUN & FORM GEL

Specifically designed for stones. Non-cleansing, clear, soft decoration gel in a practical tube. From the tube it can be easily pressed into the silicone mold to work faster and cleaner. The soft texture of the product makes easy to blend in any decorative element. After printing out of the silicone mold, its surface is smooth and shiny. It's not recommended to cover it because loses its edges.

Cure time:

LED: 1-2min

UV: 2-3min

### NEW! FUN & FORM SILICONE MOLD

Make unique decorations with your own stones!

The silicone mold offers the opportunity to create 11 stone forms in several sizes and shapes. Be creative and use glitter, Nailfetti, beads, colors, Camea Gel, and anything to make your own rhinestone. The best results can be achieved by using non-cleansing materials, because after removing them from the mold they give a smooth glossy surface. The best choice is the Fun & Form gel. 5x4x0.4 cm. The depth of the included samples is 3 mm.



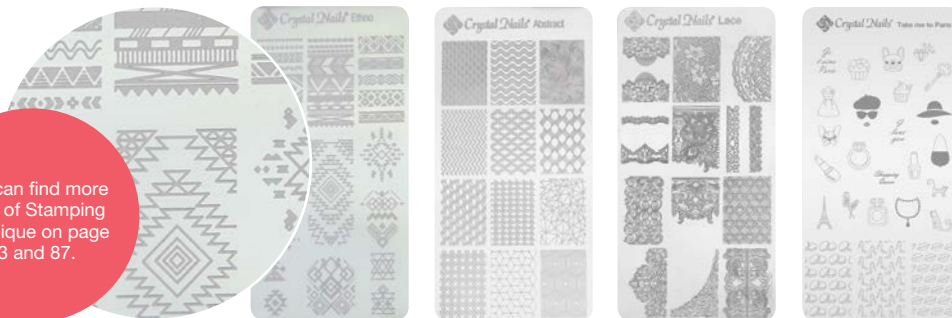
This nail was made with 3S57 3Step Crystalac, White Pearl ChroMirror Pigment Powder and Swarovski Rhinestones by Virág Halász.

# STAMPING TECHNIQUE

## UNIQUE CRYSTAL NAILS STAMPING PLATES

Unique and special, and they covering the whole surface of the nail.

You can find more tools of Stamping technique on page 43 and 87.



Ethno

Abstract

Lace

Take Me to Paris



Baroque



Textures



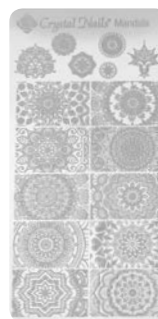
Floral



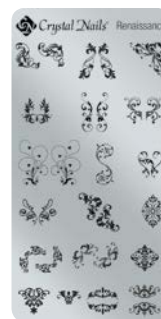
Polygons



Paradise



Mandala



Renaissance



Botanic

The stamping technique is working perfectly with the following Hard Lacquers besides the Stamping Lacquers:  
17, 18, 25, 27, 30, 45, 55, 63, 201



This nail was made with Xtreme Fusion AcryGel, R6 Royal Gel, Chrome Pink Stamping Lacquer and Aurora Pigment Powder by Melinda Drozdik.

## STAMPING TECHNIQUE

### 1. CLEAR STAMP

### 2. CARD FOR STAMPING TECHNIQUE

### 3. BIG STAMP, CLEAR

The diameter of this silicone product is 3,5cm. Thanks to the clear material, it's easier to apply the pattern to the nail. Recommended for longer nails and bigger patterns.

### 4. BIG STAMP, CLEAR - SPARE PILLOW

The diameter of this clear silicone product is 3,5cm.

### 5. STAMPING PLATE KIT, PURPLE

### 6. LINT ROLLER KIT - FOR STAMPING TECHNIQUE

Practical Roller kit for cleaning the surface of the Stamp itself. If you cleaning the surface of the Stamp with any kind of liquid, the material of the product could lose the ability to picking up the lacqers from the plate. Using this, you could avoid that unfortunate issue.

The kit contains: 1 roll and 1 spare roll-head

### 7. SPARE ROLL-HEAD

### 8. CRYSTAL NAILS STAMPING PLATE ALBUM - BLACK

For 6\*12cm plates. Also you can use for holding your stickers as well.





SLOWING LIQUID FOR ACRIL PAINT

This clear liquid is slowing down the time of the drying process of the Acril liquids.



1. JAR KIT  
25pcs  
50pcs

2. MIXING JAR  
Clear and white.

3. ROUND HOLDER FOR  
RHINESTONES

4. RHINESTONE HOLDER  
Heptagon

5. RHINESTONE HOLDER, TRIANGLE  
Triangle temporarily holder for your  
rhinestones or any other small stones or  
beads. This will help you to not to waste  
any decor products during your work. Your  
working area could be more cleaner.

6. RHINESTONE HOLTHER  
SQUARE 12 SECTIONS

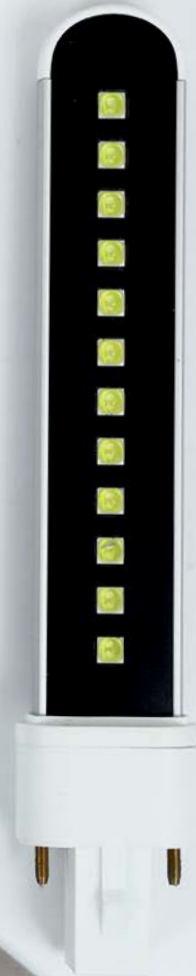
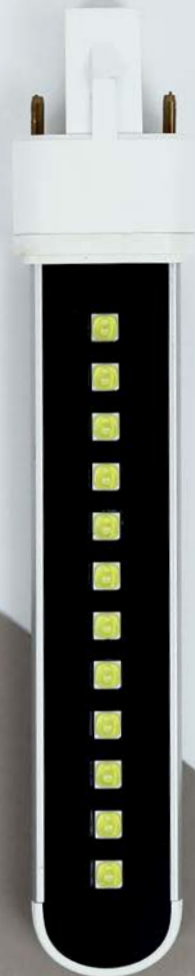
8. RHINESTONE HOLDER,  
SQUARE 7 SECTIONS

9. RIHNESTONE  
HOLDER 28 PCS





# ELECTRONICS BY CRYSTAL NAILS



**LEDEXTREME+ UVLED LAMP**

This is an improved, renewed version of the popular LEDEXTREME UV/LED Lamp. It can be controlled with a physical button and motions as well. All nail materials can cure fast and secure because of the double light range and the power of 48W. The popular „Low Heat Mode“ function assures you that you won't have the burning experience when you use it. The magnetic mirror panel at the bottom can be removed without any trouble for easier maintenance or in case of pedi usage. You can reach a new level of extra comfort and uniqueness for your guests and for your desk with the removable silicone tops. For professional use.

**Specs:**

Power: 48W  
 UV/LED bulbs: 33pcs  
 Wavelength: 365+405nm  
 Control: motion detector, and button.  
 Timer: 10, 30, 60, 90, 120sec  
 Other extras: Low heat mode, button lights  
 Accessories: silicone top (white), charger

**LEDEXPRESS+ UVLED LAMP 4. 5.**

Easy to use, small sized, snow white, pearl colored UV/LED lamp with great power (36W), which could easily cures any kind of material. Semi-circular shape, open back, lamp with high performance 18 UV/LED bulbs. Optional with motion sensor or push button off and on. Perfect choice for beginners, students and professionals, too and you can use for pedi as well.

**Specs:**

Power: 36W  
 UV/LED bulbs: 18pcs  
 Wavelength: 365+405nm  
 Control: button, motion detector  
 Timer: 30/60sec and 100sec  
 Accessories: charger

**XPRESS LED - 5 FINGER LAMP**

Practical, small, it cures classic materials faster due to its super strong LEDs – It cures CrystaLac in 30-60 seconds. The head can be rotate by 180° and the angle can be changed as well. Thanks to the strong LED bulbs, you cure the nails faster.

**Specs:**

Power: 6W  
 LED bulbs: 30pcs  
 Wavelength: 405nm  
 Control: button  
 Extra: The head can be rotate by 180°  
 Accessories: charger



## ELECTRONICS BY CRYSTAL NAILS

### CRYSTAL UV LAMP H-M/2.2 - PINK, BLACK, ECRU

Exclusive exterior, available in pink, ecru and black. It was developed for professionals and for all-day-long salon work. It can be easy to control, thanks for the digital control panel. The perfect locations of the bulbs and the mirrors inside of it, makes the curing process fast and safe. You can minimize the heat (and make faster the curing process for some material) with the optional fan function. The bottom of the product can be removed which can be a huge help for pedi, maintenance or changing the bulbs.

#### Specs:

Power: 36W  
UV bulbs: 4pcs  
Wavelength: 365nm  
Control: button  
Timer: 60-900mp (max. 15min)  
Extras: digital panel, fan  
Accessories: 9W UV bulbs (4pcs)



CN advise:  
try it with  
Universal UVLED  
bulb for  
professional  
use

### TUNEL UV LAMP H-M/1

Exclusive white exterior. It was developed for professionals and for all-day-long salon work. It can be easy to control, thanks for the digital control panel. The perfect locations of the bulbs and the mirrors inside of it, makes the curing process fast and safe. You can minimize the heat (and make faster the curing process for some material) with the fan function. The bottom of the product can be removed which can be a huge help for pedi, maintenance or changing the bulbs.

#### Specs:

Power: 36W  
UV bulbs: 4pcs  
Wavelength: 365nm  
Control: button  
Timer: 90-120mp  
(timeless usage is possible)  
Extras: Start button, fan  
Accessories: 9W UV  
bulbs (4pcs)



CN advise:  
try it with  
Universal UVLED  
bulb for  
professional  
use

### UFO UV LAMP HT1

This small, white, easy-to-use lamp may be the perfect choice for the beginners but the professionals are adore it as well. The perfect locations of the 2 short bulbs and the mirrors inside of it, makes the curing process fast and safe.

#### Specs:

Power: 18W  
UV bulbs: 2pcs (short)  
Wavelength: 365nm  
Timer: 3min and timeless  
Extra: start button  
Accessories: 2pcs of  
9W UV bulbs



CN advise:  
try it with  
UFO+ UVLED  
bulb

We gave to all of our UV lamps a bulb with special plastic holders and stronger cable-holders for the most professional result.



**1. UNIVERSAL UVLED BULB**

Makes the curing process faster, easily can change, double wavelength. This lamp will cure all kinds of material fast and safe. You can use it with identical bulbs or you can mix the simple UV bulbs. Find your best matches!

**Specs:**

Power: 9W  
LED bulbs: 12pcs  
Wavelength: 365+405nm  
Suitable: Crystal/Tube/Euro UV lamps

**2. CRYSTAL UV BULB - LONG**

Long, replaceable 9W bulb for lamps with 4 or 1 bulbs.

**Specs:**

Power: 9W  
Wavelength  
Suitable for Crystal/Tube/Euro UV lamps

**3. UFO UV BULB - SHORT****Specs:**

Power: 9W  
Wavelength: 365nm  
Suitable: UFO UV lamp

**4. UFO+ UVLED BULB**

We add more little bulbs to our bulb (12pcs). Developed especially for UFO lamps, makes the curing process faster, it is durable and cures the more sensitive materials as well.

**Specs:**

Power: 9W  
LED bulbs: 12pcs  
Wavelength: 365+405nm  
Suitable for UFO lamp

**5. ONE FINGER LED LAMP - HOME VERSION**

Practical, small, one finger, strong LED lamp hardens CrystalLacs in 30-60 seconds. You can use by plug-in (the box contains the adapter) or with 4 AA batteries (the box doesn't contain them). Even though it's one finger, it can compete with the traditional 4 finger lamps, because it can cures fast.

**Specs:**

Power: 6W  
LED bulb: 1pc  
Wavelength: 405nm  
Control: button  
Timer: 30/60sec  
Accessories: charger



All of our UVLED bulbs has double wavelength (365+405), so using this all of our light-sensitive products can cure fast and safely. Use them combined with UV bulbs or 4 identical at the same time. You don't have to worry about which material will cure in under your lamp.

## ELECTRONICS BY CRYSTAL NAILS

## 1. XTREME DRILL 4

This white, dentist-tech quality e-file developed for everyday salon work. Vibration free and you can switch the the way of the rotation. You can change the direction of the rotation (reverse and forward), and the transition between the different RPM stages is very smooth. You can chage the drill bits just one move so the usage of this product is more easier.

**Specs:**

RPM: max 30000 RPM

Rotation setting: yes

Drill-bit holder: 6pcs

Foot pedal: no (but you can purchase it separately)

Accessories: handpiece stand (2 types),  
handpiece key, spare carbonbrush



The foot panel can be  
purchased separately

**2. XTREME DRILL 3**

This precise, premium dentist-tech quality machine developed specifically for every day salon work. Very quiet, vibration free and doesn't warm up easily. The dust could hardly getting into the handpiece, thanks to the design and development of the product. The transition between the RPM stages is very smooth, almost unnoticeable and you can change the direction of the rotation (reverse/forward). You can change the drill bits with one firm move.

**Specs:**

RPM: max 30000 RPM

Rotation setting: yes

Drill bit holder: 18 pcs

Foot panel: no (it can be purchased separately)

Accessories: handpiece holder, handpiece key

**3. TRAVEL DRILL**

We developed this very light and small e-file for occasional use, especially for quick corrections, travel and practice.

**Specs:**

RPM: max 15000

Rotation setting: no

Drill bit holder: no

Foot panel: no

Accessories:

drill bit kit, charger

**4. X1**

This little white, clean-designed machine could be the perfect choice for occasional use or beginners. It has a low vibration, it can perform on an average standard level, also you can change the rotation reverse and forward.

**Specs:**

RPM: max 15000

Rotation setting: yes

Accessories: table

handpiece holder



## ELECTRONICS BY CRYSTAL NAILS

### CERAMIC DRILL BITS

#### **CRYSTAL NAILS CERAMIC DRILLING BIT CYLINDER**

Extremely durable new development with parallel sidewalls. It has medium strength and size. Thanks to the rounded end it is very safe does not hurt the skin. Completely resonance and pain free. We can skip the hand filing in the shaping phase with it. Perfect for refill remove the gel and acrylic product from the nail surface. Does not heat up!

#### **CRYSTAL NAILS CERAMIC DRILLING BIT CONE**

Extremely durable, big size, it came out in one of the most popular cone shape made of ceramic. You can remove any gel and acrylic product without causing any pain. Completely resonance free. Thanks to the perfect material and shape it does not get hot.

#### **CERAMIC SURFACE SOFT DRILL BIT - CYLINDER**

Big, parallel, rounded top, strong drill bit. Developed for gel and acrylic product remove in filling technique. Because of the rounded shaped top, it won't harm the skin. This drill bit won't warming up.

#### **CERAMIC REMOVE DRILL BIT - CONE**

The most popular cone shaped drill bit. With this bit, the gel and acrylic product removing process will be faster. The product will not warming up.

---

### CARBIDE DRILL BITS

#### **EASY REFILL CARBIDE DRILL BIT**

Developed for equalize the level during the buliding or filling process with gel and acrylic products, near the lateral nail fold. Also, this bit is perfect for removing a strenghtened gel polish with bits. Thanks for the special developed grooves of the bit, be left or right handed, you can use this product easily.

#### **CLASSIC CARBIDE BIT**

Cylinder shaped with lengthwise grooves strong drill bit. This strong bit has a sharp cutting edge, so it is recommended for advanced nail technicians. Developed for gel and acrylic products.

#### **SURFACE REFINER BIT**

Big, parallel, round shaped top. This product can create a very fine surface and it doesn't harm the skin.

#### **CARBIDE BIT - BARELL**

Special shape, almost a cylinder. Using this could make faster the gel and acrylic product removal process before filling. It's very effective, it can reduce the time of the removing process by half compared to the Xtreme Titanium Bit - Cone.

---

### XTREME BITS WITH TITANIUM COAT

#### **SMALL DRILL BIT - CONE**

Developed for cleaning the cuticle and remove the dead skin from the nail. The special blunt edge cannot make any injury, using in a horizontal position, the lowest RPM possible. For advanced professionals only!

#### **MEDIUM DRILL BIT - CONE**

Medium, thinner bit. This is the strongest bit in our repertoire. Developed fast, painless gel and acrylic product removal. Recommended for right handed people because of the direction of the grooves.

#### **LARGE DRILL BIT - CONE**

Big, cone shaped drill bit. This is the most popular and extra strong drill bit. Developed for fast, painless gel and acrylic product removal. Be left or right handed, this product is for everyone. It won't heaten up. For advanced professional use only!





## NEW! JOKER MANICURE BIT - CONE

Cone shaped, multifunctional drill bit. Big, medium strong in a diamond dust coat. We can use this bit in several stage of our work: lifting cuticule, preparing the natural nail, thicker skin. The rounded top will protect your customer from injuries. The long, cone shape assures the safe and effective work on the cuticle.



## NEW! LIFT-UP BIT 1.

### CUTICLE LIFTING DRILL BIT - BIG, STRONG

Lance shaped, cuticle lifting drill bit. Big and strong bit with a diamond dust coat, which is perfect for lifting a big amount of skin from the nail in the cuticle area; also good for the cleaning of the cross area between the proximal and the lateral nail fold.



## NEW! LIFT-UP BIT 2.

### CUTICLE LIFT-UP BIT - MEDIUM, STRONG

Lance shaped, cuticle lifting medium drill bit with diamond dust coat, which is perfect for lifting a medium amount of skin from the nail in the cuticle area. Also good for the cleaning of the cross area between the proximal and the lateral nail fold.



## RENEWED! LIFT-UP BIT 3. /

### OLD NAME: LENGHTENED CONE BIT

Lance shaped, cuticle lifting big drill bit with diamond dust coat, which is perfect for lifting a small amount of skin from the nail in the cuticle area. Also good for the cleaning of the cross area between the proximal and the lateral nail fold.



## NEW! EASY CUT DRILL BIT 1.

### DRILL BIT FOR THE SKIN STRONG/BIG

Barrel shaped, big drill bit for the skin with diamond dust coat. Developed for removing the already lifted big amount of skin and removing the hard skin from the cross area between the proximal and the lateral nail fold.



## NEW! EASY CUT DRILL BIT 2.

### DRILL BIT FOR THE SKIN MEDIUM STRENGHT AND SIZE

Cone shaped medium drill bit for the skin with diamond dust coat. Developed for removing the already lifted medium amount of skin and removing the hard skin from the cross area between the proximal and the lateral nail fold.



## NEW! DEEP CLEAN DRILL BIT 1.

### BIG SIZE, MEDIUM STRENGH

Lance shaped, deep cleaning big/medium strenght drill bit with diamond coat. After the cuticle was cut off, this bit can clean deeper the cuticle and remove the remaining skin pieces. In case of small nails we can use it for lift the skin as well.



## RENEWED! DEEP CLEAN DRILL BIT 2. / OLD NAME: MINI POINTY CYLINDER BIT

Cone shaped deep cleaning medium sized, strong drill bit with diamond coat. After the skin was cut we can clean deeper the cuticle area and remove the remaining dry skin pieces in case of big amount and hardly lifted skin.



## NEW! DEEP CLEAN DRILL BIT 3

Lance shaped, deep cleaning small, medium strenght drill bit with medium strenght diamond dust coat. After the skin was cut off, it can clean the cuticle area at the deepest level. It can remove the remaining small amount of dry skin pieces in case of normal depth rising skin.



## NEW! DEEP CLEAN DRILL BIT 4.

Lance shaped, deep cleaning mini sized medium strenght drill bit with medium strenght diamond dust coat. After the skin was cut it can clean the cuticle area at the deepest level. It can remove the deepest tiniest dry skin pieces.



## NEW! REFINE DRILL BIT

Barrel shaped big sized drill bit for the skin with fine diamond dust coat. After the skin was cut off we can smoothen the skin with this bit.



## ELECTRONICS BY CRYSTAL NAILS

### DRY PEDICURE WITH E-FILES DRILL BITS - EFFECTIVE TOOLS

#### SPHERE SMALL AND BIG



#### CONE



#### CYLINDER



#### BIG CONE



### CONE CARBIDE RAISED DRILL BITS

#### BIG CONE L SOFT DRILL BIT

Cone shaped, big sized drill bit. The blunt top makes the useage more safer. Leghtwise grooves. For gel and acrylic product.



#### BIG CONE

For preparing manicure and pedicure and artificial nails.



#### SMALL CONE

Preparing the pedicure and manicure. Lo-zenge grooves.



#### 1. NEW! DRILL BIT CLEANING BRUSH

Changeable copper drill bit cleaning brush for carbide, diamond, ceramic bits. 6\*2\*0,37cm

#### 2. DRILL BIT RINGS - 3 LEVEL

Disposable, strong and durable texture, for removing and shaping gel and acrylic product. Fine, average and strong level.

#### 3. RHINESTONE REMOVING BIT

With this bit, you can easily remove the stones from the nail. You can use this on the whole surface without harming the skin.

#### 4. DRILL BIT RING HOLDER

#### 5. DRILL BIT CLEANING BIT

Strong bristle mini cleaning bit. It can clean the bits easily and you can use it for cleaning the lateral nail fold.

#### 6. DIAMOND CYLINDER FOR PREPARING

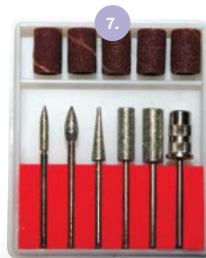
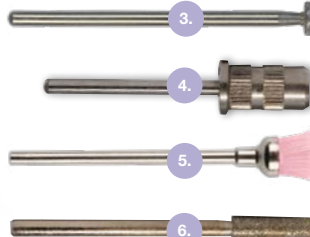
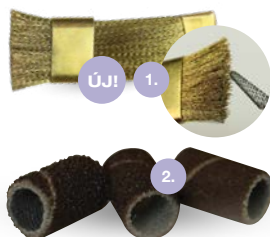
#### 7. BIG DRILL BIT KIT

#### 9. DRY MANICURE DRILL BIT KIT FOR DRY MANICURE

This is the newest kit. Making the preparation with this kit could be slowing down the regrowing process.

The purposes of the bits:

1. Classic fine-buffing bit: cleaning the small cracks nad fine-buffing the skin
2. Small sphere: Deeper cleaning
3. Big sphere: removing the thicker and hard skin
4. Cylinder: the already done checking cleaning
5. Thin cylinder: removing the cuticle and the skin from the nail plate
6. Pointy Cylinder: cleaning the lateral nail fold



FOR GEL AND ACRYLIC PRODUCT REMOVAL AND FILLING

CARBIDE BIT #1



CARBIDE BIT #2



CARBIDE BIT #3

**1. ATTRACTIVE DUST COLLECTOR**

Great performance, developed for 2 hands, clean design. White faux-leather cover, alloy-steel protective bars. Accessories: Dust bag - 2pcs

**2. XTREME STRONG DUST BAG**

Developed for the Xtreme Strong Dust Collector. Rubber banded top can help you with the smooth apply to the machine.

**3. ATTRACTIVE DUST BAG**

Developed for the Attractive Dust Collector, it can be washed.



## ELECTRONICS BY CRYSTAL NAILS

### CRYSTAL DUST - EXTRA STRONG DUST COLLECTORS

#### UNIQUE CRYSTAL NAILS DESIGN

Multiple vacuum power covered in unique, girly pillow-ish cover. Two handed design, and easy to use. Developed for everyday salonwork, they can effectively collecting the dust during the work, so they can provide you more clean working area for you. Easy to empty, we added a special kind of filter, the material of the dust bag is thick and it can be washed. You can choose from 3 different color: pink, gold and silver. Soft faux-leather cover assures you for more comfort. Accessories: 1 dust bag, charger



For  
professional  
use

### CRYSTAL DUST - BUILD-IN COLLECTORS

#### 2 TYPES OF SURFACE: LEATHER-EFFECT AND SHINY, DIFFERENT SIZES: MINI AND NORMAL

Multiple vacuum power, save you some place to work, easy to build in to the table with a clean white design. They can collect the dust during the salonwork, so they can provide you cleaner working area. Easy to empty, and we added a special filter. The bag is thick and washable. You can choose 2 different sizes and 2 different styles.

Sizes: mini 170\*170\*6mm; normal 290\*170\*6mm

Accessories: 1 dust bag, charger



MINI

NORMAL

MINI

NORMAL

For  
professional  
use



**GIGALED - TABLE LED LAMP****GIGALED TABLE LAMP DESK LAMP**

Adjustable brightness - 25%, 50%, 75%, 100% light intensity settings - 24W lamp, thanks to a wide headlight it illuminates the whole work surface. „Power Memory” function (when power is switched off, the previously set brightness switches back on again). The head of the lamp can be twisted in 360 degrees laterally and in 180 degrees up and down. The neck can be twisted in 180 degrees. Can be attached to a table.

**SMART LAMP LED TABLE LAMP**

Smart lamp. Characteristics:

- LED light source - can be warm / cool color temperature (2700K, 5300)
- Six gradual brightness control (3 hot and 3 cold)
- Three point bend fixture
- hinge, positioned head

Accessories: adapter and mounting panel (for table top mounting)

**TABLE LED LAMP - FOR LIGHTING**

Narrow design, flexible at the neck, modern design. Light the whole table evenly. You can fix it to the table, so it will stay steady. It does not cure the gel! Energy saving LED technology!

**XPRESS LIGHT MAGNIFYING DESK LED LAMP PERFECT FOR STAND**

Adjustable on three points, lightweight frame, snow white colored, magnifying desk lamp with bright LED lighting. Pivoting positioned head which can turn up and down in 180 degrees and rotate side to side in 360 degrees. With touch brightness controller: increase or decrease the brightness with pressing the switch longer. The lamp magnifies the things three times bigger, not distort.

**SUPER BRIGHTNESS – STRONG MAGNIFIER LAMP**

More mobile, bendable at more points, slim, long table lamp. Good for sensitive eyes. Diopter: 3D.



## ELECTRONICS BY CRYSTAL NAILS

1. **DIGITAL PINK PARAFFIN MACHINE**  
Digital adjustable temperature 2,5 litre paraffin machine.  
You can adapt the temperature required by your clients.

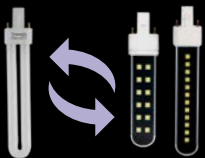
3. **PURPLE PARAFFIN MACHINE**  
Modern design and color, 3 stages.  
Accessories: protective bar, holder bag, gloves and socks

2. **PRO-WAX 100 PARAFFIN WAX HEATER**  
Compact wax heater machine with several stages.

4. **PARAFFINS**  
6 intense scents: jasmine, peach, tea tree, orange, lavender, rose.  
450g




Can't decide between the LED and UVLED? We're here to help!



...you do mostly  
gellac...

...you mostly  
sculpting...

If	you have Tunnel lamp...		4 Pcs	2 Pcs
	you have a Crystal UV Lamp...		4 Pcs	2 Pcs
	if you have an euro lamp...		1 Pcs	1 Pcs
	if you have an UFO lamp...*		2 Pcs	2 Pcs

...of UVLED bulbs, you will need.

HOW CAN I CHANGE MY BULBS IN MY LAMPS TO LED/UVLED BULBS? (FOR 4 BULBS LAMPS)

Combined usage



Note: Option A recommended in case of LED bulbs. Option A and B both recommended in case of UVLED bulbs.



Note: option C is NOT recommended in case of LED bulbs if you using material which are don't cure in LED light. Option C is recommended in case of UVLED bulbs.

DOESN'T RECOMMENDED USAGE - switched applications



Note: option E and F could cause malfunctions!

Symbols



LED or  
UVLED  
bulbs



UV  
bulbs

All of our UVLED bulbs has double wavelength (365+405), so using this all of our light-sensitive products can cure fast and safely. Use them combined with UV bulbs or 4 identical at the same time. You don't have to worry about which material will cure in under your lamp.

CHECKING THE BULBS

It's important that you check the effectiveness of your UV, LED, UVLED bulbs for the more efficient work.

WHY IS IT IMPORTANT?

If the the bulbs are weak or if you are working with a lowpowered lamp, mistakes can occur or the results won't be durable: CrystaLac won't cure properly, get matte or rip off. Gels nails might cure well, but the result won't be long-lasting.

HOW CAN I TEST IT?

Apply 1 layer of Cool Top Gel to the nail or tip. If the edges are sticky after 2 min curing, where the lights are not direct, then the bulbs are weak.

Important: in case of everyday salonwork, the UV, LED, UVLED bulbs need to be changed approximately every 6 months.

WHAT SHOULD I KNOW ABOUT LED, UVLED BULBS/LAMPS?

Even if you working with combined lamps (that means you put LED or UVLED bulbs to the Crystal UV Lamp) or the newest LED/UVLED lamps, you should consider the following facts and take our advises.

- Some white or light material (CrystaLac, Color Gels, some Top Gels) could turn yellow after curing in LED or UVLED lamps. This phenomenon caused by a chemical reaction but after approximately 10 minutes it will disappear after the product has cooled down and you will get the required color.

- We recommend you to keep your jars in a safe distance from your lamp. If you have a lamp which has a back, you can keep it behind it, if you have a backless lamp, keep it next to it with some distance because the light could get through the wall of the jars and damage the material inside. So make sure that you have your gels out of the light what comes from your lamp.

- Some materials will not cure in the light of LED. These are: Builder Clear Gel 1, Pink Builder Hard Gel, Builder Pink 1, Builder Pink 2, Antifungal PEDI Gel, and some of the color gels: most of the 200, 500, 600; Supernova, Fly-Brill, Moonlight Gels.

- The Tiger Eye Gels, the 3 Step colors, the Water Pro and 1 Step CrystaLacs are love the LED light. That means they don't flow around;

- the pattern on the surface of the Tiger Eye which was made with magnet;

- the dropped color-pattern on WaterPro CrystaLac;

- The 1 Step and 3 Step colors demand the LED or UVLED light for curing because of their consistency and pigments.

IMPORTANT: Know your lamp's qualities! Experiment before you get to use them on your everyday salonwork. It's crucial in case of ChroMirror Pigment Powders, Transferfoil Gels and other thick non-cleansing decorating material. Try to avoid the under-curing which means that you don't keeping your nails inside the lamp enough time to cure the materials. In these cases the products could be sloppy or they could fall off from the nail plate. Also, you have to avoid the over-curing, because they could break easily.

CN advise:

Never stop checking your lamp or the bulbs in your lamp (depends on the lamp's type) The best method is when you test your lamp at the first time, observe how much time does it takes to cure your builder gel! Usually it supposed to take 10-15sec. This is not a full cure time, this is for to make the material to that consistency to not to move for the working process.

We recommend you to test your products in a monthly basis and if the curing time reaches the 20-30sec the bulbs/product needs to be changed. IMPORTANT: the test should have taken with already warmed up bulbs.

# CURING TIME IN UV, LED, UVLED LAMPS

## BASE GELS AND TOP GELS\*\*

	UV Lamps and bulbs	LED Lamps and bulbs	UVLED lamps and bulbs
Base Gel	2-3 min	1-2 min	1-2 min
Builder Base Gel	2-3 min	1-2 min	1-2 min
Cool Top Gel	2-3 min	1-2 min	1-2 min
Top Shine*	2-3 min	1-2 min	1-2 min
Xtreme Top Shine	2-3 min	1-2 min	1-2 min
Top Seal	2-3 min	1-2 min	1-2 min
Top Seal Light	2-3 min	1-2 min	1-2 min
ONE STEP CrystaLac 0*	2-3 min	1-2 min	1-2 min
CrystaLac Clear/Top 0	2-3 min	1-2 min	1-2 min
Easy Off Top	2-3 min	1-2 min	1-2 min
MattEver Matt Top Gel	2-3 min	1-2 min	1-2 min
Cool Top 4 Dark	2-3 min	1-2 min	1-2 min
Mega White Film Gel*	2-3-4 min	1-2-3 min	1-2-3 min

## COLOR GELS AND DECORATING GELS\*\*

	UV lamps and bulbs	LED Lamps and bulbs	UVLED lamps and bulbs
Color Gel	2-3-4 min	1-2-3 min (Fly-Brill and Brilliant Gel do not cure in LED)	1-2-3 min
Royal Gel*	2-3 min	1-2 min	1-2 min
Lace Gel	2-3 min	1-2 min	1-2 min
Art Gel	3-4 min	2-3 min	2-3 min
3D Gel	2-3 min	1-2 min	1-2 min
Stamping Color Gel	2-3 min	1-2 min	1-2 min
RoyalCream	2-3 min	1-2 min	1-2 min
Bubblegum Color Gel	2-3 min	1-2 min	1-2 min
Desert Gel	2-3 min	1-2 min	1-2 min
Camea Gel	2-3 min	1-2 min	1-2 min

## SOAK-OFF GELS\*\*

	UV Lamps and bulbs	LED Lamps and bulbs	UVLED lamps and bulbs
Compact Base Gel	2-3 min	1-2 min	1-2 min
Easy Off Hardener Gel	2-3 min	1-2 min	1-2 min
3 STEP CrystaLac	2-3 min	1-2 min	1-2 min
ChroMe CrystaLac	3-4 min	3-4 min	3-4 min
ChroMe Top*	2-3 min	1-2 min	1-2 min
Tiger Eye CrystaLac	2-3 min	1-2 min	1-2 min
My Glow CrystaLac	2-3 min	1,5-2 min	1,5-2 min
Glassy CrystaLac	2-3 min	1-2 min	1-2 min
CoverPRO CrystaLac	2-3 min	1-2 min	1-2 min
NailArt CrystaLac	2-3-4 min	2-3 min	2-3 min
ONE STEP CrystaLac*	2-3 min	1-2 min	1-2 min
ONE STEP Easy CrystaLac*	3-4 min	2-3 min	2-3 min

\* These materials will be shiny and hard after curing.

\*\* All the cure times depends on the performance, frequency of usage of the UV, LED, UVLED lamps/bulbs and the using method of the material. Recommended to change the bulbs every 6 months in case of everyday salon work.



This nail was made with R146, R148, R149 Royal Gels; white, black, royal blue, olive, neon yellow Art Gels by Edina Sikari.



# CURING TIME IN UV, LED, UVLED LAMPS

## BUILDER GELS

	UV lamps and bulbs	LED Lamps and bulbs	UVLED lamps and bulbs
Gelly Cover Pink Gel	2-3 min	1-2 min	1-2 min
Cool Gel	2-3 min	1-2 min	1-2 min
Cool (Remove) Clear	2-3 min	1-2 min	1-2 min
Titanium Gel	2-3 min	1-2 min	1-2 min
Xtreme Clear	2-3 min	1-2 min	1-2 min
Gum Gel	2-3 min	1-2 min	1-2 min
Builder Clear I.	2-3 min	-	1-2 min
Builder Clear II.	2-3 min	1-2 min	1-2 min
Xtreme Cover Pink	2-3 min	1-2 min	1-2 min
Cover Pink	2-3 min	1-2 min	1-2 min
Rocky Cover LightGel	2-3 min	1-2 min	1-2 min
Cover Pink Crystal	2-3 min	1-2 min	1-2 min
Cover Refill Gel	2-3 min	1-2 min	1-2 min
Cover Refill Hard Gel	2-3 min	1-2 min	1-2 min
Cover Refill Hard Tan Gel	2-3 min	1-2 min	1-2 min
Cover Refill Hard Crystal Gel	3-4 min	2-3 min	2-3 min
Xtreme White	3-4 min	2-3 min	2-3 min
Builder Soft White	3-4 min	2-3 min	2-3 min
Builder White II.	3-4 min	2-3 min	2-3 min
BabyBoomer-White Gel	2-3 min	1-2 min	1-2 min
Xtreme Pink	2-3 min	1-2 min	1-2 min
Pink Builder Hard Gel	2-3 min	-	1-2 min
Builder Pink I.	2-3 min	-	1-2 min
Builder Pink II.	2-3 min	-	1-2 min
Antifungal Pedi Gel	2-3 min	1-2 min	1-2 min
Galactic Builder Gel	2-3 min	1-2 min	1-2 min
Xtreme Superior Builder Gel	2-3 min	1-2 min	1-2 min
BabyBoomer 2	2-3 min	1-2 min	1-2 min

	LED Lamps and bulbs	UVLED lamps and bulbs
Xtreme Fusion Gel Clear*	1-2 min	2-3 min
Xtreme Fusion Gel Cover Pink*	1-2 min	2-3 min
Xtreme Fusion Gel Transparent Pink*	1-2 min	2-3 min
Xtreme Fusion Gel White*	1-2 min	2-3 min
Xtreme Fusion Gel Extra White*	2-3 min	4-5 min

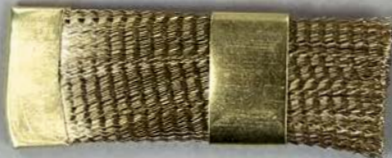
\*In case of UV lamp the curing time take 4-5 min.



This nail was made  
with 1S84 One Step  
CrystaLac and Matte-  
ver Matte Top Gel by  
Dóra Dovicsák

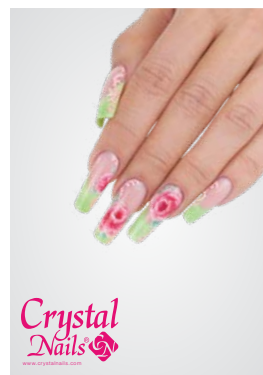


# ACCESSORIES



## POSTERS

Put some very exciting and quality posters on your wall! It will be the jewelery of your salon!



### 1. BLACK&WHITE APRON

New, stylish Crystal Nails apron in black and white color with white Crystal Nails logo.

### 2. BLACK&PINK APRON

Pink – black Crystal Nails apron with the ordinary Crystal Nails quality and design. New, very stylish formation with pink logo.

### 3. HONEYSUCKLE APRON

The original Crystal Nails quality and design. In a popular honeysuckle color with a white Crystal Nails logo.

### 4. APRON WITH RHINESTONE LOGO

Due to its impregnated (water resistant) material, it protects the clothes underneath.

### 5. HONEYSUCKLE APRON WITH RHINESTONE LOGO

Apron in honeysuckle color with a shiny Crystal Nails logo made with rhinestone. Pretty and enviable wear.



## ACCESSORIES

**CN PASSHOLDER**



**CN PILLOW**



**CN BIG DESIGN BAG**  
38,8\*48\*12,2 cm



**TERRY CLOTHES HAND  
HOLDER WITH LOGO**  
Pink and white.



**FAUX-LEATHER  
HAND HOLDER**



**MINI FAUX-LEATHER HAND  
HOLDER**

Holder with Crystal Nails logo



**CN TERRY CLOTH TOWEL**  
100% cotton.



**CN TERRY CLOTH TOWEL**  
100% cotton.



**TERRY CLOTH  
GLOVES**



**TERRY CLOTH  
SOCKS**



**CN TOWEL - WITH MOLDING**  
50\*100cm



**PREMIUM DUST BRUSH**

Its compact, thick head removes the dust completely after filing. Gentle to the skin so it gives the client a pleasant feeling. Its ergonomic design makes it an easy-to-use hand tool and allows four fingers to be dusted at the same time.





**DUST BRUSH**  
Pink, with holder



**DUST BRUSH WITH HOLDER**



**HALF MOON DUST BRUSH**



**DUST BRUSH - MINI**



**MASK**



## MAGIC BRUSH DUST BRUSH

Double-sided nail brush that attracts dust, so the nail bed and its surroundings can be completely dusted. Its surface looks rough, but touching is fine, like a gentle massage. To remove nail powder (gel, acryl, AcrylGel) dust this brush is the most effective. The dust does not sit between the fibers, easy to clean with soapy water and disinfectant alcohol or with disinfectant spray.



**DUST REMOVE SPRAY**



**LACQUER DRYING SPRAY**



**BRUSH CASE AND CLEANSER**



**3M PROFESSIONAL DUST MASK**



**PROTECTING GLASSES**



**FINGER PROTECTING TAPE**



**TOOL SANITIZER BOX**



**METAL PLATES FOR MIXING PALETTES**



**MANICURE BOWL**



## MIXING PALETTE

Lockable, practical mixing palette with 12 separate metal washers. You can easily store and deliver the paints which you do not need every day after painting of a throwunused amount. The metal pads are magnetic, such disassembly and individually cleaned with ease. With Crystal Nails logo.



## ACCESSORIES

### LONG COLOR PALETTE

You can display your colors to the client, so she can choose according to her preference. Available in transparent and white.



### FAN PALETTE

The colors are easily changeable, you can try them on the client's finger. 23 pcs/display.



### FAN TIP DISPLAY, 120 PCS, NATURAL AND CLEAR capacity: 120 pcs tips.



### NEW! CLEAR COLOR DISPLAY WITH METAL RING, 50PCS/PACKAGE



### NUDE MOPS TIP ON METAL RING, 50 PCS/PACKAGE

Natural mops tip which easy to handle. It has a practical metal ring which bring together the tips.



### BLACK COLOR DISPLAY WITH METAL RING, 50 PCS/PACKAGE

The black version of our 50 pcs display tips. Its advantage is that the nail technician do not have to paint the tips black prior to painting the designs. Makes the practice and presentation of some decorating techniques easier and faster. It's really easy to hold the tips by their handle and the practical metal ring keeps the finished tips together.



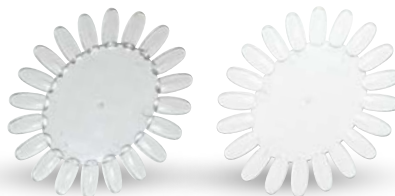
### CRYSTAL NAILS COLOR DISPLAY RING

Practical ring to display the color better. Just click it on the silver bottle. It makes the choice easier to your client and you can find the colors easier too.



### OVAL DISPLAYS

In transparent or white color, oval



### METAL MIXING PALETTE

Its uniform surface makes it possible to mix several materials simultaneously (e.g. pigment powders with light gels, beads, etc.). Thanks to its metal surface, it is extremely easy and quick to clean. Size: 14,8x10 cm.



### RING MIXING PALETTE

Product for mixing colors. Finger-lockable, easy to use for mixing in parallel with staining.



## PRACTICING HAND

Life-like practical hands with a flexible holder. Rubber, vivid skin color, movable fingers. Can be fixed on a table.



## PRACTICING HAND

Life-like practical hands with a flexible holder. Rubber, vivid skin color, movable fingers. With holding pad.



## PRACTICING FINGER

1. plug in tip
2. sticky tip



## AQUAINK HOLDER

Stable, black with a Crystal Nails Logo in it. Silicone



## MAGNETIC TIP DISPLAY (5PCS)

It works as a stand when making tips or the table can be decorated with the most successful works.



## MAGNETIC TIP DISPLAY (WHITE 5PCS)

White console for Magnetic Tip Display to match the color scheme of the decorative tips.



## DRILL MACHINE HEAD HOLDER

It is designed to hold 16 pieces of head, which makes it easy to transport and to store them on table and to disinfect them simultaneously.



## PUMP DISPENSER JAR

You can store cleanser or polish remover in it, so it is easier to use.



## TIPFIX PLASTICINE GLUE

Pre-cut fasteners for attaching decorative tips to displays. There are 78 small cubes in one package. Multiple reusable, durable, temporary glue that thanks to its quality material keeps its shape even after UV / LED lightning.



## POLYGON JAR



## GLASS JAR WITH GLASS TOP



## ACRYLIC JAR



## ACCESSORIES

### NEW! CRYSTAL DEMO PLATE OVAL, SQUARE

Prepare your favourite tips because the Crystal Demo Plates has arrived! Apply your decorated tips on it easily and you're ready to make some pics for any social media or even if you just show them in person to your customers! The Crystal Demo Plate is the perfect way for you to organize your tips and most importantly, you can make easier to choose for your customers. The size of the Oval Demo Plate is usually 9cm diameter (the size of the pieces of this shape can be different from each other).



### NEW! SILICONE TIPTAPE

Silicone Tape for nail art tips. Double sided tape, reusable. The length is 1 meter, the thickness is 1mm. This is the perfect choice for display books and our new Crystal Demo Plate.

CN advise: If the tape what you using has lost of the stickiness you only have to do is wipe it or wash it and it will be good as new!



#### 1. SCRIBBLE PEN READY, STEADY, SCRATCH!

This product can help you to make your patterns more spectacular. You can use it for scratching patterns into the gel or like a fountain/dip-in pen and draw some unique design on the nail.



#### 2. PIPETTE For Acryl Remover and Monomer

#### 3. ORANG TREE WAND

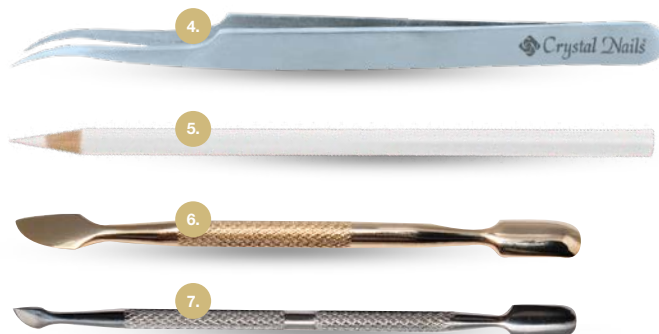
#### 4. RHINESTONE PICKER-UP TWEezer

#### 5. RHINESTONE PICKER-UP PEN

#### SKIN PUSHER FOR MANICURE GOLD AND SILVER COLORS

#### 6. Small

#### 7. Big

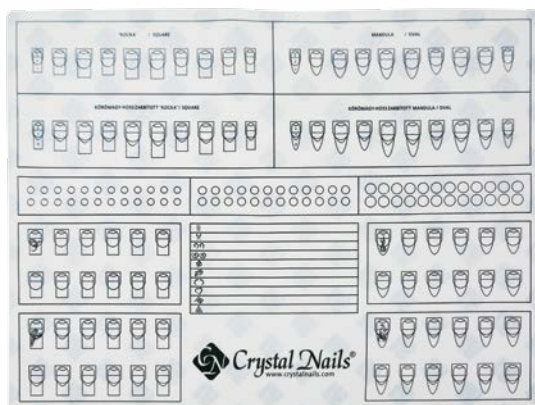




## CRYSTAL NAILS SILICONE PRACTICE PAD

Two sided Silicone practice pad that is suitable for practicing sculpting, perfecting your lines and handmade patterns. Made with unique graphics. Easy to clean and also protects the table from getting dirty. Remove the uncured gel with a cleanser pad or fiber free towels saturated with cleanser. The cleaning is suggested with soapy warm water on the silicone part.

Size: 30x40 cm



## CRYSTAL NAILS COPYBOOK

Whatever comes to your mind, you do not have to use paper or postits. Beautiful, stylish bookle with nail photos of our Champions. It has 100 pages. One side of it is square lattice and the other side is smooth.



## GLUE FOR RHINESTONES



## TABLE COVER 50 PCS

A3 size, with Crystal Nails logo. Perfect background for reveal shots or tutorials and marketing videos.





# HAND AND FEET CARE



## NEW! MOISTURISING HAND, FOOT AND BODY LOTION

OUR NEWEST RICH LOTION PRODUCT LINE CONTAINS SHEA BUTTER. THE OIL LEVEL IS MORE HIGH, THE ABSORPTION IS SLOWER AND BECAUSE OF THAT, THE SKIN CARE QUALITY IS MORE EFFECTIVE.

1. NEW! Papaya Lotion - Rich  
Contains: shea butter, jojoba oil, cocoa oil, vitamins with a scent of papaya.
2. NEW! Grapefruit Lotion - Rich  
Contains: shea butter, jojoba oil, cocoa butter, vitamins with a scent of a grapefruit.
3. NEW! Strawberry lotion - Rich  
Contains: shea butter, cocoa butter and vitamins with a scent of strawberry.
4. NEW! Vanilla Lotion  
Contains: shea butter, cocoa butter and vitamins with a scent of vanilla.







Crystal  
Nails® 



*Crystal*  
*Nails*® 