




Crystal
Nails® 

250 🏆

Competition victory
in the world!

Crystal
Nails® 

With the charm of
eternal renewal

www.crystalnails.com



Crystal
Nails®

ACRYLGELS



SENS BY CRYSTAL NAILS PREMIUM ACRYL GELS

SENS ACRYLGEL

THE HOMOGENOUS POLYGEL WHICH COMBINES THE BEST QUALITIES OF ACRYGELS

The homogenous polygel which combines the best qualities of acrygels.

This is the upgraded version of acrylgel polygels. The consistency is homogeneous and it has excellent coverage. After curing, it is an almost dry surface. Thicker than the others, so they keep the shape better but require a stronger brush to work with. For starters we have clear, cover pink, and white colours. They won't burn during curing. For creating the white part of the french nail, we recommend to make a clear base foundation level. We recommend to use AcrylGel Assistant for this product. Curing time: 2-3 min in UV; 1-2 min in LED.

27ml (30g)



SENS ACRYLGEL

ASSISTANT

GENTLE TO THE BRUSH, EASY TO WORK WITH

Special shaping liquid for our AcrylGel. With the help of this product, you can work without the brush drying out. A small amount of this liquid is enough for stopping the AcrylGel to stick to the brush. It has a nice, tutti-frutti scent.

50ml



Sens Acrylgel with Cover Peach Plasty Gels

The nail was made with **Sens Cover Peach Acrylgel, S001, S004, S009 3G Gel polishes** and the decoration was made with the **Plasty Gel Brown, Pink and Yellow** by Barbara Újvári.

CRYSTAL NAILS XTREME FUSION ACRYL GEL ACRYL GELS

THE UNIQUE ACRYL GEL IS A MEMBER OF OUR 'XTREME' PRODUCT LINE, WITH EASY AND TIMELESS FORMABILITY

XTREME FUSION ACRYL GEL

New generation, non-heating, Xtreme dense, perfect shaping and easy to file hybrid AcrylGel builder gel. During the sculpting, the controllability of the gel and the formability of the acrylic is almost characteristic. After curing, it will have the same flexibility of gel combined with the same strength of the acrylic. It can be filed easily after curing and cleansing. The tube packaging provides cleaner working conditions. Accurate dispensing: a sufficient amount of the product is applied to the nail without any waste. Makes the sculpting faster compared to gels or acrylics. There's no need for base gel: use it with only cleanser. Extremely easy to file: the work with this material is fast and sparing for the customer and the technician as well.

Recommended files: Xtreme 180/180 Green File, Classic 150/150 (Blue) Zebra File or the IronX 150/180 file. It doesn't even lifting on the nails with cohesion problem, neither at sculpted nor the refilled nails. It can be combined with any other builder product line of Crystal Nails. Recommended top gel: Cool Top Gel Universal. The application of this material is recommended with softer brush: Nero Merlo I., CoverPRO Brush, Xtreme Acrylic brush, or any other natural (non artificial), round formed brush. Curing time: 4-5 min in UV, 1-2 min in LED

30g –
60g – Clear and Cover Pink colors!

♥ CN advise:
when you use the Extra White,
make a base-layer first with a Clear
acrygel, in order to cure properly



Density ●●●●●+

♥ CN advise: use UV/LED
or LED lamp for the acrygels
for the faster salon work.

When you use the Extra
White, make a
base-layer first with
a Clear acrygel, in order
to cure properly.



In eight colors: the bright shine of Rose Quartz, the Mermaid Latte, the most popular Cover Pink, the sparkling Shimmer Latte, brilliant Extra White, the transparent Clear, the perfect White which is perfect for Baby Boomer, and the gorgeous Transparent Pink for warmer shades.

XTREME FUSION ACRYL GEL INTRO KIT (3X3,5GR)

We made a trial kit with the AcrylGels so you can try it. The AcrylGel doesn't burn while curing, thick, it has extremely good shaping attributes and you can file it easily. When you sculpting, the flexibility of the gel and the manageability of the acrylic are merging. After curing, it has to be cleansed and after that you can shape it easily with files.

The kit contains:

Xtreme Fusion AcrylGel Clear - 3,5gr, Xtreme Fusion AcrylGel Cover Pink - 3,5gr,
Xtreme Fusion AcrylGel White - 3,5gr



TUBE SQUEEZER - TUBUSKINYOMÓ

We made this product for easier and faster salon work. Rollers made of aluminium so it is durable and long lasting. Suggested for Xtreme Fusion AcrylGel. Using the squeezer prevents bubbling the gel after squeezing it out.



♥ You can find the Xtreme
Fusion Tips on page: 108.



BUILDER GELS AND BASE/COVER GEL



TRANSPARENT (CLEAR) BUILDER GELS



XTREME SUPERIOR CLEAR GEL

NEW GENERATION OF BUILDER GELS,
EVEN FOR NO FILING TECHNIQUE

A new generation of builder gels with a nice purplish tone which cures at lower temperatures due to its low heat generation formula. An easy-to-use crystal-clear Xtreme builder gel that provides fast work with its medium density. Super-strong, flexible and still easy to file. It can be used as a builder gel for short and long nails as well.

Curving time: 20-25 sec in UV; 8-10 sec in LED, Curing time: 2-3 min in UV; 1-2 min in LED.

5ml
15ml
50ml

Density



The best for
no filing technique.



More special,
more advanced,
more extreme!



POPULAR

XTREME CLEAR

TRANSPARENT, THICK, ULTRA STRONG BUILDER GEL

Top quality, dense, non-yellowing, purplish (UV filter and color brightening effect), hard, clear builder gel. It is the strongest Crystal builder gel, so it can be pinched and shaped very well. Extremely shiny and the cohesion is very good too. Perfect for extreme shapes and pinching. Can be used for the creation of both short and long nails. It cures fast because of a special accelerator material in it. It might cause burning sensation, so cure the nails fractionally: first 5 secs, then take the clients hand from the lamp for 5 secs, then cure it for 10 secs, then you can pinch it. This way it will not cause burning. Apply it with a firmer brush: Firm Gel or Nero Merlo III. brush.

Curving time: 10-15 sec in UV; 5-8 sec in LED. Curing time: 2-3 min in UV; 1-2 min in LED.

5ml
15ml
50ml

Density



The gel
with the best
bending



Extremely
strong nails for
extreme use.



POPULAR

TITANIUM

TRANSPARENT, MEDIUM THICKNESS,
SPECIAL XTREME BUILDER GEL

Medium thick, blue-ish (in the jar), clear builder gel, with special consistency. Thanks for a secret ingredient, the material keeps itself together, does not flow around. It is very easy to spread it on the surface, but it keeps the sculpted shape very well, which permits a quick and precise work. Ensures maximal control, which is an essential tool of the quality work and with this builder gel you can easily make a C-curve. It can be used for the creation of both short and long nails. We also suggest it for the beginners. Apply it with a softer brush: 6 Gel brush, Xtreme Gel brush, Nero Merlo II. brush.

Curving time: 40-50 sec in UV; 10-20 sec in LED. Cure time: 2-3 min in UV; 1-2 min in LED.

5ml
15ml
50ml

Density



Unique formula, special
ingredients.
Building c-curve in a minute.

TRANSPARENT (CLEAR) BUILDER GELS

COOL GEL

CRYSTAL CLEAR, XTREME BUILDER GEL WITH REDUCED HEAT GENERATOR FORMULA

New Generation of the builder gels, developed for the nail technicians and salon work. This gel has a low heat formula and it's curing in lower heat. Super strong, flexible and easy to file. For short and for long nails as well.

Recommended brushes: Gel Brush 6, Xtreme Gel Brush, Nero Merlo II. Brush

Curving time: 20-25 sec in UV, 8-10 sec in LED. Curing time: 2-3 min in UV; 1-2 min in LED.

5ml
15ml
50ml

Density ●●●○○○

♥ Low Heating formula

♥ Density and handling optimized for salon work.

BUILDER CLEAR II.

TRANSPARENT, SOFT BUILDER GEL, CRYSTAL-CLEAR BUILDER GEL

Soft, crystal-clear builder gel. It can be used for decorating the surface and making any other decorations. Recommended for natural length nail. It cannot be curved. For this soft gel we recommend that you use softer brush: Xtreme Gel brush, Gel brush 6, or Nero Merlo II. brush. Curving is not possible. Curing time: 2-3 min in UV; 1-2 min in LED.

5ml
15ml
50ml

Density ●●●○○○

COOL (REMOVE) BUILDER GEL CLEAR

THE ONLY SOAK OFF GEL WITH LOW HEATING FORMULA, FLEXIBLE BUILDER GEL

Medium soft, transparent, flexible builder gel with optical brightener. The consistency of this gel assures for you less working time. Self leveling and easy to handle. Thanks for the flexibility, it doesn't break, the cohesion is excellent. Recommended brushes: Gel 6 brush, Xtreme Gel brush, Nero Merlo II. brush. Curving time: 20-25 sec in UV; 10-15 sec in LED. Curing time: 2-3 min; 1-2 min in LED.

5ml
15ml
50ml

Density ●●●○○○

♥ After you removed most of the fake nail with e-file, you can easily soak off the nail which was built with Cool (Remove) Builder Gel.



TRANSPARENT (CLEAR) BUILDER GELS

French nails with gel

The nail was made with **Xtreme Superior Gel**
and **Highlight Gel** by Virág Halász.



GUM GEL

Medium soft, clear builder gel with a soft bluish shade. Extremely flexible, formable gel. Easy to shape and file. It can be applied in the salon work perfectly. Very easy to handle. Because of its strong adhesion, apply it under any builder gel as a base at problematic clients. Moves together with the natural nail plate, that is why it won't lift and break. Because of the flexibility of the product, we recommend to use it for the sculpting of nails with minimal length. Apply it with a softer brush: Xtreme Gel brush, 6 Gel or Nero Merlo II. brush.

Curing time: 2-3 min in UV, 1-2 min in LED.

5ml
15ml
50ml

Density ●●○○○



BUILDER CLEAR I. CLEAR, THICK BUILDER GEL

Medium thick builder gel, due to its ice blue color, it has color brightening effect. It has gelatinous consistency in the jar, very dense builder gel, but becomes softer from the heat of the hand, it will be easier to handle this way. We recommend for natural nail length. It cannot be curved. Recommended brushes: Xtreme Gel brush, 6 Gel brush or Nero Merlo II. Curving is not possible. Curing time: 2-3 min in UV; it doesn't cure in LED.

5ml
15ml
50ml

Density ●●●○○

TRANSPARENT (PINK) BUILDER GEL

Xtreme Superior Builder Gel Natural Pink

The nail was made with **Xtreme Superior Builder Gel Natural Pink**, the decoration was made with **Light Rose AB Nova Crystals** and the **Rosegold Diva Glitters** by Alexandra Mész



XTREME SUPERIOR BUILDER GEL NATURAL PINK

THIS IS THE NEW BRIGHTER AND MORE PINK SHADE
OF OUR XTREME SUPERIOR GEL PRODUCT LINE

Most of people like the contrast between the tanned skin and the light nail color. By using this shade of builder gel, it is easy to reach this contrast. In winter, the shade of this product could match the lighter and more fade skin. In case of growing off, it will not be seen too much, because of the color of the gel. It is recommended for those who don't like the brownish or purple-ish gels. The Xtreme Superior Builder Gel product line of a builder gel family which can be perfect for the file-free technique. This Natural Pink shade has fine coverage and it can be used by itself or for creating french nails as well. We recommend to use a base gel underneath.

Curving time: 20-25 sec in UV; 8-10 sec in LED. Curing time: 2-3 min in UV; 1-2 min LED.

5ml
15ml
50ml

Density ●●●○○

XTREME SUPERIOR BUILDER GEL COVER PINK FOR NO FILING TECHNIQUE AS WELL

The Cover Pink shade of our Xtreme Superior Gel which is a perfect choice for file-free technique. The cover pink is a natural cover color, which could be used for its own or for a french nail. For the proper cohesion, use a base gel before. It can be used for a refill as any refill material could but the coverage is stronger. Superior Gel Cover Pink is suitable for filling the nail completely, similar to a Refill material, but its coverage is stronger than that. The heat generation during curing is extremely low and there is no strong burning sensation.

Curving time: 20-25 sec in UV; 8-10 sec in LED. Curing time: 2-3 min in UV; 1-2 min in LED.

5ml
15ml
50ml

Density ●●●○○



TRANSPARENT (PINK) BUILDER GEL



XTREME PINK FIBERGLASS BUILDER GEL

Transparent, medium thick, milky pink builder gel. This is the strongest pink builder gel in our repertoire. Easy to handle. Use for higher the nail bed or for sculpting a whole nail! Removes the color imperfections of the nail bed. It contains fiberglass, which makes the nails extra strong. Because of an accelerator component, it cures faster. During the curing process the gel could be hot, so cure the nails in sections: first 5 secs, then take the clients hand from the lamp for 5 secs, then cure it for 10 secs, then you can curve it. This way it won't cause burning sensation. Apply it with a harder brush: Firm Gel or Nero Merlo III. brush.

Curving time: 10-15 sec in UV; 5-8 sec in LED. Curing time: 2-3 min in UV; 1-2 min in LED.

5ml
15ml
50ml

Density ●●●○○○

♥ In basic attributes, it is similar to the Xtreme Clear: it can be curved perfectly.



BUILDER PINK II. SLIGHTLY COVERING PINK BUILDER GEL

Thick, transparent, milky peach strong buider gel. Covers the smaller nail imperfections if it used by its own. The heat of the nail makes this product a bit softer, so it can be more easy-to-handle. Use it for nail bed enhancement and for the filing technique of the smile line. Apply it with a soft brush: 6 Gel brush, Xtreme Gel or Nero Merlo II. brush.

Curving is not possible. Curing time: 2-3 min in UV; doesn't cure in LED.

5ml
15ml
50ml

Density ●●○○○○



MILKY ROSE BUILDER GEL FULLY PINK, MODERATELY THICK BUILDER GEL

Light Pink shade and it has a similar ability to cover like the Cover Refill Gel. Unique shade of pink builder gels what we can use in every phase of salon work: building the whole nail, filling up, even for the babyboomer. Because of the amount of the pigments, it can cure in a thicker layer. Use a base gel for proper cohesion, e.g. Compact base gel. Cure this periodically to avoid the too much heat. For curving, build a clear base because this gel cannot be curved individually.

Curing time: 2-3 min in UV; 1-2 min in LED.

5ml
15ml
50ml

Density ●●●○○○

♥ CN advise:
Use the Low heat mode on
LEDExtreme lamp to avoid the massive heat!

TRANSPARENT (PINK) BUILDER GEL

ANTIFUNGAL PEDI GEL BUILDER GEL

Builder gel for nail correction, or replacement of nails. Soft, light peachy pink, almost clear gel. Use it for the creation of short natural-effect nails especially on feet.

Curing time: 2-3 min in UV; 1-2 min in LED.

5ml
15ml

Density



Pedi technician's favorite.



NAILBED EXTENSION COLORED (COVER PINK) BUILDER GELS

XTREME PUDDING+ BUILDER GEL SOFT PINK COVER PINK BUILDING GEL

It combines the flexibility of liquid building gels with the strength of pudding gels. It is very easy to work with because its texture allows it to be spread quickly and evenly on the nail surface. It is also suitable for traditional techniques, but it can also be distributed beautifully without grating. Shorter and longer nails can be made with it, in both cases the work with it will be very durable and long lasting. It has a beautiful, natural color and strong opacity, it can be used to create a nail bed, but also to build a complete nail.

Base Gel should be used for proper adhesion. It bends well, binds hard, is easy to file. Curving time: 20-25 sec in UV; 8-10 sec in LED. Curing time: 2-3 min; 1-2 min in LED.

5ml
15ml
50ml

Density



CN advise: As with any cover gel, clear precipitation may occur on the surface of the material. In this case, smooth the material with a spatula, but do not mix.



COVER PINK NAIL BED EXTENSION GEL

Nail bed extension gel with natural color and it perfectly covers the nail. The color of this gel is almost the perfect match for most of the clients. Easy to use, softer type of gel. This gel has a softer consistency, easy-to-handle, easy-to-work-with. With this gel, you can easily make the perfect color-transition in the cuticle-area and it has a perfect coverage near the smile-line. Apply it with a softer brush: Gel brush 6, Xtreme Gel brush or Nero Merlo II. brush.

Curing time: 2-3 min in UV; 1-2 min in LED.

5ml
15ml
50ml

Density



Most popular cover shade.



NAILBED EXTENSION COLORED (COVER PINK) BUILDER GELS



GELLY COVER PINK BUILDER GEL

NEW CATEGORY BETWEEN THE COVER REFILL AND THE XTREME FUSION PRODUCT FAMILY

Cover gel what provides a perfect coverage. It can be applied on the whole nail or for the nail bed extension. The material is perfectly homogen so the nails won't be mottled or transparent. In one step you can make the heightening and nail bed extension. Thanks to it's new „pudding” texture the material stays where we put (not selfleveling) and easy to apply because it's not runny. The desired form/curve can be made easily. This gel is the perfect choice for making high smile line wall thanks to its shape holding feature. At refilling or sculpting process we can put on the material all the five fingers so we can save time. Thanks to its perfect adhesion it wont be airy under the nails. Not so flexible but it is stronger and does not break. We recommend you to use the Gelly Brush for this gel. If you would like to cure it, create a base layer with a clear gel, because it is not possible to cure it on its own.

Curing time: 2-3 min in UV; 1-2 min in LED.

5ml
15ml
50ml

Density



It has a new, „Pudding” texture.



ROCKY COVER LIGHTGEL NAIL BED EXTENSION GEL

Gel with medium warm, natural shade of pink color, for nail bed extension. The most popular Cover Pink color. Thanks for the self-leveling attribute, it is very easy to spread. It's not messy, doesn't flow around, and because of that, it is very easy to make a smile-line with that. The easy-to-handle Cover Pink which can cures even if you apply it a thicker layer. Recommended brushes: Gel Brush 6, Xtreme Gel Brush or Nero Merlo II. brush.

Curing time: 2-3 min in UV; 1-2 min in LED.

5ml
15ml

Density



Made with Cover Pink nail bed extension builder gel

The nail was made with **Titanium Gel, Cover Refill Hard Gel**
and **Cool Top Gel Universal** by Virág Halász.



Made with nail bed colored cover builder gel

The nail was made with **Cover Refill Hard Gel, Xtreme White Builder Gel** and the decoration was made with **Ornament Gel** by Virág Halász.



COVER REFILL GELS BUILDER GELS

Builder gel with natural effect and optimal coverage developed for refillings. It is a slightly covering Cover Pink, the color of this product is identical with the most popular Cover gel. In case of nails with nail bed extension the regrowth area can be filled in full thickness. With less pigments, that's why even if you use in full height, it will look like as a regular nail bed extension gel worked towards the root of the nail, nicely mashed. The work is faster with it, as the Cover Pink and the Clear material can be replaced at the same time (2 in 1): due to its pigment content, the color of the nail bed will be even, it can be used for nail bed enhancement. Recommended brushes: 6 Gel brush, Xtreme Gel or Nero Merlo II. brush. Use it with base gel for the proper cohesion (e.g. Compact Base Gel).

They're not so pigmented so when you sculpting or filling a nail, it will look like if it would be a regular nailbed extension, meanwhile we could create a smile line with a perfect coverage. The filling process is faster because it can be used for clear and cover pink as well. Also, it can be used for babyboomer technique too.

Curving time: 30-35 sec in UV. 20-25 sec in LED. Curing time: 2-3 min in UV; 1-2 min in LED.



POPULAR

COVER REFILL HARD GEL



More dense version of the Cover Refill Gel. The color of those two is very similar to each other: beautiful pinky shade.



POPULAR

COVER REFILL HARD TAN GEL



Warmer version of the bestseller Cover Refill Hard builder gel, for browner skin tone.



Wonderful gel for nail bed extension with pearly shade which contains ice-crystals.



Medium thick builder gel. It is similar to the bestseller Cover gel.



Density



5ml
15ml
50ml



Density



5ml
15ml
50ml



Density



5ml
15ml



Density



5ml
15ml
50ml

WHITE BUILDER GELS



BABYBOOMER-CRYSTAL WHITE BUILDER GEL

We would like to do a favour for the lovers of babyboomer nails with this glittery new product. It contains silver pearly ice crystals which made this white builder gel softly smooth and sparkling. The gel is medium dense and it's easy to work with. If you apply it in a thin layer it will be transparent, if it's thick it has good coverage. It is a good material to pinch. We recommend you to use a softer brush: Gel 6 brush, Xtreme Gel brush or a Nero Merlo II. Curing time: under UV lamp 2-3 mins, under LED lamp is 1-2 mins.

5ml
15ml
50ml

Density ●●●○○○



BABYBOOMER-WHITE BUILDER GEL FOR BABY BOOMER TECHNIQUE

Slightly transparent white builder gel with medium density. It is a natural white builder gel, and can be worked on the nail perfectly. If it applied in a thin layer it will be transparent, if it applied thicker layer, it covers the nail perfectly. On the nail form it does not require a clear base layer, because it will cure perfectly. Apply it with a softer brush: Gel brush 6, Xtreme Gel brush, or Nero Merlo II. brush.

Curing time: 2-3 min in UV; 1-2 min in LED.

5ml
15ml
50ml

Density ●●●○○○



Use Cover Refill Gels for
the root of the nail!



BABYBOOMER 2-WHITE BUILDER GEL

THICKER BUILDER GEL, FOR BABYBOOMER TECHNIQUE

More thick and more pigmented off white builder gel for anyone who loves the lively and more white. More dense, it has a slightly „pudding” consistence but it's self-leveling enough to work with. This consistence makes possible to stop at the edges so we can sculpting the whole height of the nail.

Curving time: 15-20 sec in UV; 10-15 sec in LED. Curing time: 2-3 min in UV; 1-2 min in LED.

5ml
15ml
50ml

Density ●●●○○○



Babyboomer magic

The nail was made with
Xtreme Fusion AcrylGel Rose Quartz,
Glam Clitters #13, Art Gel,
Mermaid effect #5 and Nova Crystal drops
by Virág Halász.



FLEXI FRENCH GEL

WHITE, FLEXIBLE GEL, FOR SUPERFICIAL FRENCH PAINTING

Very bright white, flexible, cleansing material and it has an ideal consistency for shaping the french end of the nail on flexible surfaces or on a gel polish base. Using this, the french end will not crack because it's flexible. After the curing, it will not blur and you will have a perfectly white texture.

Recommended brushes: 0 Short or Mini, Barbara II., Art Design.

Curing time: 2-3 min in UV; 1-2 min in LED.

5ml

Density



For creating the french edge



FLEXI FRENCH GEL

BUILDER WHITE II. RENEWED

WHITE BUILDER GEL

Dazzling cold white, highly pigmented builder gel with medium thickness. Does not flow. It has self leveling attribute, and good coverage. Still cures, even if applied it thickly. In the lamp its surface gets even because of the heat.

Recommended brushes: Gel brush 4, Gel brush 6 or Nero Merlo II. brush.

Curing time: 3-4 min in UV; 2-3 min in LED.

5ml
15ml
50ml

Density



Creating a base layer is necessary for this product, but you don't need a top layer for it so the French end will be as vibrant as possible!

Dazzling cold white, unbelievably controllable.

XTREME WHITE BUILDER GEL

WHITE BUILDER GEL

Thick, warm snow white builder gel. It is highly pigmented, so it has good coverage, even if applied it in a thin layer. Very bright shade of white and it cures well. It can be spread easily even if it's thick. Doesn't flow, so we can create a nice, smooth surface with it. Recommended brushes: Gel brush 4, Gel brush 6 or Nero Merlo II. brush.

5ml
15ml
50ml

Density



Creating a base layer is necessary for this product, but you don't need a top layer for it so the French end will be as vibrant as possible!

More special, more advanced more extreme



GEL KITS

BABYBOOMER GEL KIT – FOR BABY BOOMER TECHNIQUE 2X5ML

The babyboomer technique is very popular among the customers because of the decency of the design itself. The essence of it is they merge the white free edge to the color of a nail bed. The result is a more natural looks then the classic french nails. The kit contains the Cover refill hard and the new Babyboomer White, and we can use both of them to create a wonderful Babyboomer nail entirely with gels. When you done with the sculpting you can perfectly decorate it with the ChroMirror pigment powder, the Sugar-Powder, or the Crystal Mermaid Powder or any gel painting.

The kit contains:

- BabyBoomer White gel 5ml
- Cover Refill Hard gel 5ml



BABYBOOMER 2 GEL KIT – FOR BABYBOOMER TECHNIQUE 2X15 ML

The Babyboomer White II. Builder Gel is a thicker and more pigmented offwhite product. Perfect match for this material is the Cover Refill Hard Gel.

The kit contains:

- BabyBoomer White gel 2. 15ml
- Cover Refill Hard gel 15ml



TITANIUM BUILDER GEL KIT

KIT CONTAINS:

- Titanium Gel 5ml
- Renewed Builder White II. Gel 5ml
- Cover Pink Gel 5ml
- Xtreme Top Shine 4ml
- Cleanser pad (10pcs)
- nail form samples



XTREME BUILDER GEL KIT

KIT CONTAINS:

- Xtreme Clear Gel 5ml
- Xtreme White Builder Gel 5ml
- Xtreme Cover Pink 5ml
- Xtreme Top Shine 4ml
- Cleanser Pad (10db)
- Xtreme butterfly and Crystal Nails form (10pcs)



ROCKY COVER LIGHTGEL KIT

KIT CONTAINS:

- Rocky Cover LightGel 5ml
- Titanium Gel 5ml
- Builder White II. Renewed Gel 5ml
- Xtreme Top Shine 4ml
- Cleanser Pad (10pcs)
- Xtreme butterfly form (10pcs)



SENS BY CRYSTAL NAILS

BASE GEL

BASE GEL DEVELOPED FOR ESPECIALLY FOR STRENGTHENING TECHNIQUE.

“LIQUID-LIKE BUILDER GEL”

Base and strengthening gel with extra strong cohesion. This bigger version of the product is perfect for everyday salon work because easier to work with the bigger jar: easier to gain the material from it, the surface can be made faster and the chance for creating bubbles in the nail is less last but not least it could last longer. Both of them have excellent coverage and the cohesion is the same as the Clear. It could be especially charming for french, babyboomer nails, base for any nail art or by itself. This is the strongest known Base Gel on the market right now, specially developed for strengthening technique. Due to its special component, it is unique among base gels. It has tiny little artificial silk strands in it, making the product thicker and more flexible. Beyond that; this new technique can help with the preparation of the surface and C-curve, due to its consistency, it will not flow over the lateral nail fold or near the cuticle. It can also help with the cohesion too speeding up the process. The product contains vitamin 'E' and calcium. The order of base gels by cohesion: Sens Base Gel, Compact base Gels, Builder Base Gel, Universal Base Gel, (Easy Off Hardener Gel). This product will not get hot during the curing, remains flexible and it will not break. Curing time: 2-3 min in UV, 1-2 min in LED.

4ml –
10ml –



10ml

4ml



Milky White

Milky Rose

Clear



Cover Peach

Cover Pink

Shimmer Nude

Shimmer White

COMPACT BASE GEL PLUS CLEAR BASE AND NAIL STRENGTHENING GEL

This is the thicker version of the most wanted Compact Base Gel Clear. This product has a more convenient consistency, it won't flow even in the heat of the summer. You can easily make the c-curve and the durability is the same as the Compact Base Gel.

Curing time: 2-3 in UV; 1-2 min in LED.

4ml
8ml

♥ The thicker version
of the Compact Base Gel.



8ml

4ml

BASE GELS

COMPACT BASE GEL

NEW GENERATION OF BASE GEL AND NAIL STRENGTHENER

Soak-off, flexible and super dense nail strengthener gel, it's self-leveling and creates smooth surface. Despite its high density, it's easy to work with. Features very strong adhesion which is perfect for a base layer. Enhances the durability of the nail strengthener but also could be used for creating the C-curve, fixing curved nails for sculpting nail extensions using nail forms.

How to use:

- Prepare the nails with Spray Prep or Nail Prep/No Buffer Scrub. No need to use Primer
 - Apply color gel polish over the properly cured surface (Don't remove the thin tacky layer. It helps with applying the color more preciously)
 - Compatible with all kind of CrystaLacs (Except: ONE STEP Easy CrystaLac)
 - Using it as a base under ONE STEP CrystaLacs extends their durability similar to the 3 STEP CrystaLacs (up to 3 to 4 weeks)
 - Features extreme adhesion hence perfect under hard gels too
 - In case of sculpting- first remove the tacky layer then shape it like hard gels
- Curing time: 2-3 in UV; 1-2 min in LED.

4ml

8ml

13ml

(13ml: Clear és Cover Pink colors)



Speeds up the salon work: Features very strong adhesion which is perfect for a base layer. Enhances the durability of the nails as nail strengthener but also could be used for creating the C-curve, fixing chipped nails or for sculpting nail extensions using a nail form.

Compact Base gel Pastel: The new, colored Compact Base Gel collection released with four fresh spring pastel shades calls on the rebirth of nature. From the budding of trees to the sight of a clear sunny blue sky all the way to the blossoming of cherry trees. You can also use them independently so the coloring of the nail is already done when the C-curve is applied. If you want to add only a hint of color to the nails, just use a thinner layer. You can combine them with plenty kind of glittery decorations (Glam Glitters, Crystal Flakes, etc.) so the brightness can appear from under the colorful, milky material.

Clear: Transparent, water-clear material. It is perfect under colours, especially when the base shouldn't have a basic colour.

Milky White: We've waited for this milky white shade for a long time! You can make a beautiful and sophisticated nails because it is perfect for even a base color.

Milky Rose: It has milky effect with white and pinky shades. It gives a good base for the decoration; covers slightly. It will be the favourites of nude effect fans!

Cover Pink: Our beautiful Pink cover color with opaque coverage. Recommended for French nails / pink and whites. Apply this Compact base gel as the base layer, the nail strengthener and as the pink base color of the French nails, then apply the white free edge color (recommended CoverPRO white) and use a top gel to finish the perfect French look.

Cover Rose: It has a soft pinky shadow. It covers perfectly. Most of the time we use it on its own. It has a colour like 3S42.

Translucent Nude: Medium opaque, natural, nude color that blends right with the color of the natural nails. Perfect for strengthening nails or dramatic, natural effect as well as a base under less opaque colors.



13ml

8ml

4ml



Pastel Rose



Pastel Violet



Pastel Blue



Pastel Mint



Clear



Milky White



Milky Rose



Cover Pink



Cover Rose



Translucent Nude



It's perfect for covering the natural nail surface and creating a nice, smooth layer for sculpting.



More durable, extra strong cohesion, nail strengthener, base gel recommended under builder gels too.

BASE GELS / NAIL STRENGTHENING BASES

BUILDER BASE GEL BASE GEL

Medium dense, strong cohesion, flexible, soak off base gel. It can be used before gel filling or sculpting for base (for the appropriate cohesion) and it stops the base layer lifting up from the surface of the natural nail. Use it under 3Step CrystaLac, for Reverse tip technique or Xtreme Fusion Gel.

Curing time: 2-3 min in UV; 1-2 min in LED.

4ml
15ml



15ml

4ml

BASE GEL

Soft, flexible, soak-off base gel with good cohesion. It can be used before gel filling or sculpting for base (for the appropriate cohesion) and it stops the base layer lifting up from the surface of the natural nail. Use it under 3Step CrystaLac, for Reverse tip technique or Xtreme Fusion Gel. This is the best soak off base gel, so if someone wants to remove the gellac without filing, we recommend them for use this base gel.

Curing time: 2-3 min in UV; 1-2 min in LED.

4ml
15ml



15ml

4ml

ELASTY HARDENER GEL

CLEAR, FLEXIBLE, SOAK-OFF NAIL STRENGTHENING “LIQUID BUILDER GEL WHICH CAN CREATE A STRONG AND LONG LASTING LAYER TO THE NATURAL NAILS

This is ideal for everyday salon work, for creating c-curve, filling, correcting. It can be used for making S, M size nails (using forms) considering the thickness of the material. Unfortunately during the building process, it can barely pinching. Under another builder gel, it can be used as strong base gel. For strengthening the nail, the color can be applied on it without any filing, so the time of the fillings could be less than ever. It can be used for pedicure as well.

Curing time: 1-2 min (LED), 2-3 min (UV)

8ml
13ml



13ml

8ml

NAIL STRENGTHENING BASES / TOP GELS

SENS TOP GEL

LONG LASTING AND NON-CLEANSING TOP GEL FOR PRESERVING THE ORIGINAL SHADE OF COLORS

Long-lasting, non-cleansing, bright and shiny top gel. The unique feature of this product is the lack of the material what makes the colours more vivid, thus preserving the true shades of the colours. The consistency is medium, it won't flow easily so you can work in a bit thicker layer with it in order to get a smoother surface.

Curing time: 1-2 min in UV; 2-3 min in LED.

4ml



**Gyönyörű francia
SENS Top Gel-lel fedve**

A képen látható köröm Sens Acrygel Cover Pink-kel és White-al, a díszítés pedig Diva Glitters 1-el készült (Halász Virág munkája).

EASY OFF HARDENER GEL SOAK-OFF, NAIL STRENGTHENER GEL

Recommended for make stronger the natural nail plate, but you can make some minimal nail correction (1-2 mm) with it too. We recommend to use a base gel before this product for the propriate cohesion and you apply this gel on that surface, 1 or 2 layers.

Curing time: 2-3 min in UV; 1-2 min in LED.

Clear – transparent

Milky White – slight coverage

Milky Pink – slight coverage

15ml



HARDENER SAND NAIL STRENGTHENER POWDER

This is a very fine dust for strenghtening the nail. We recommend to using this product if we would like to preserve the natural look of the nail but we want to strenghten it. Apply a thin layer of Compact Base Gel then sprinkle this dust on the surface of the CBG and cure it. After that, apply the color in a usual way. The nail what has prepared this way will be resistant without c-curve.

Curing time: 1-2 min in UV; 2-3 min in LED.

10g



MILKY TOP GEL

THE BRAND NEW MILKY TOP GELS ARE THE QUICK SOLUTION FOR THE LOVERS OF CLASSIC FRENCH NAILS

Non-cleansing, whitish and pinkish top gel shades. Milky Top can be used in a thin layer like other top gels, so it will not give a stronger coverage on the surface, it will only lightly paint it. It dims the sharp contrast between the smile line and the nail bed. It will be a favorite of lovers of restrained French nails. Curing time: 2-3 min in UV; 1-2 min in LED.

4ml



CONFETTI TOP GEL

MATTE BLACK AND WHITE

NON-CLEANSING, SOAK-OFF, FLEXIBLE MATTE TOP GEL

This is a non cleansing, soak-off and flexible matte top gel, with black glitters of mixed sizes and shapes in it. It can make easier to reach the splashing effect. You can cheer up any of your gel polish but the most exciting could be the light, pastel colors or neon shades to be a base layer for this. If your customer would like a shiny surface, you can just cover it with Cool Top Gel Universal or Cool Top Gel 4 Dark top gel. CN Advise: In case of a high level usage, apply a layer of Mattever Top Gel.

4ml



Confetti Black



Confetti White



NEW! GLAM TOP GEL

RAINBOW ROSE

The color-changing glitters of the Glam Top Gel glow like tiny stars at dawn or as morning dewdrops on flowers. They flaunt as many colors/shades as the rainbow after a spring downpour. Non-cleansing, flexible top gel with the already well known range of Glam Glitters is guaranteed to be the new favorite of the season.

CN Advise: It cheers up any base color perfectly! The material can also be applied nicely with your brush, but if it is more convenient, adjust the glitter grains using the 0 Short brush.

4ml



in base
3S12

in base
3S42

in base
3S78



4ml

TOP GELS

AURORA TOP GELS NON-CLEANSING, FLEXIBLE, COLORFULL SPARKLING TOP GEL

It contains beautiful, multi-colored flakes and glitter that go well with any base color. Interestingly, the glitters are in different sizes, but they're very thin, so they fit nicely into the surface of the nail. Curing time: 2-3 min in UV; 1-2 min in LED.

4ml



MATTEVER MATT TOP GEL NON-CLEANSING, FLEXIBLE, SOAK-OFF TOP GEL

Non-cleansing, soak-off, flexible, super matte top gel. With the help of this product, you could reach more durable result more then ever. It will not be shiny later. After curing, you have to cleansing it for the perfect resolution. Curing time: 2-3 min in UV; 1-2 min in LED.

4ml
8ml
13ml



EASY OFF TOP GEL CLEANSING, FLEXIBLE TOP GEL

Soft, flexible, cleansing, soak-off, top shine gel. For gel and acrylic nails. It could be used for nail strenghtener as well (on CrystaLac). It contains blue-ish UV filter for the perfect result. Curing time: 2-3 min in UV; 1-2 min in LED.

15ml



TOP SHINE™ XTREME GEL NON-CLEANSING, FLEXIBLE, SOAK-OFF TOP GEL

Non-cleansing, slightly flexible with extra high shining attributes. It can be used for any gel or acrylic nails. It contains a blueish UV filter and it's non-yellowing. It doesn't soak off, so we don't recommend for gel polishes. Curing time: 2-3 min in UV; 1-2 min in LED.

4ml
15ml



COOL TOP GEL UNIVERSAL NON-CLEANSING, SOAK-OFF, MEDIUM DENSE, DURABLE AND FLEXIBLE AND WONDERFUL TOP COAT

It can last even weeks, everyone loves it. It contains a blue UV filter, non-yellowing gel. After curing, you don't have to fix it. Recommended for gel or acrylic sculpted nails and on 3step or ONESStep. Curing time: 2-3 min in UV, LED: 1-2 min.

4ml
8ml
13ml

♥ The most popular, brightest most durable top gel

♥ POPULAR



TOP SEAL LIGHT GEL FLEXIBLE CLEANSING TOP GEL

Thicker, extremely shiny, durable, clear shine gel. Flexible, cleansing, non soak off. Yellowing free gel nails. Advantage: the nail art design doesn't wear out under it. The consistency of the product is perfect even in the summer. It doesn't flow. It can be applied thickly, so the imperfections, file marks on the surface can be corrected. (Time and energy saving.) After curing, cleanse it with Cleanser in order to reach a perfect result. Curing time: 2-3 min in UV; 1-2 min in LED.

15ml



COOL TOP 4 DARK NON-CLEANSING, FLEXIBLE, SOAK-OFF SUPERSHINE FOR DARKER SHADES

Our most popular top gel, Cool Top Gel, gets a new version! It doesn't contain the component that makes the nail luminescent in a blue-ish color because of the UV light. Use this, and you will have no problem what you had with the other Cool Top Gel when you worked with warmer shades of colors (the warmer shades were different in natural light than in artificial light). From now on, the bordeaux will be not purplish, the black stays black. Non-cleansing, elastic, soak-off gel, middle-stiffness. Curing time: 2-3 min in UV, LED: 1-2 min.

CN Advise: Perfect choice for ChroMirror Pigment Powder, Crystal Flake and of course any CrystaLac!

4ml
8ml
13ml



The Cool Top 4Dark top gel in action

The nail was made with 3S163, 3S111 3 STEP CrystaLacs, #12, #15 Royal cream, #3 mermaid effect, R6 Royal Gel and the Cool Top 4 Dark top gel by Dóra Kesztyűs.

Crystal
Nails®

COLOR GELS

remarkable lively colors



BRILLIANT GEL

SPARKLING GLITTER

BRILLIANT GELS

5ml



BRILLIANT GEL

The Crystal Nails BRILLIANT color gel collection is in the special container gel and the glitter particles that shine more intensely than ever before, almost light up and vibrate. In addition, its colors are much more vibrant, so they can be distinguished from afar.



On advice:

Brilliant gel decoration advice: We recommend you to use Brilliant gels between layers: one layer of builder gel as the base, cure it than decorate it with Brilliant gel, after this cover it with builder gel and make the C-curve.

1. FLY-BRILL GELS



The light of fly-brill product-line of crystal nails makes you dazzle before you even get a chance to use it: it's enough to open the jar! These gels are ready to use without blending them, and most importantly, this gel has so good viscosity, it will leveling itself under the brush. Spectacle and easy-to-handle: this is the fly-brill.

2. FULL DIAMOND GELS



The main attributes of the full diamond color gels is that they shine bright like a diamond. It's shining strongly than ever, in truly wild colors.

Brill effect

This nail is made with Xtreme Fusion AcryGel Cover Pink and S20 color gel (The nail is made by Monika Majnik).



CHAMELEON COLOR GELS

COLOR CHANGING GELS



CHALAMELEON FLASH GELS COLOR CHANGING GELS



Your nails will change the color because of the light: in sunshine or shadow, daytime or night, your nails will adapt itself for the time of the day.

5ml



240
Sky to Indigo

241
Punch to
Magenta

MOONLIGHT EFFECT COLOR GELS

THAT GLOW IN THE DARK



MOONLIGHT EFFECT COLOR GELS

It's another exciting madness: be luminescent in the dark! Amaze your customers who loves french nails with this Moonlight Effect gel and make the free-edge wit this product. Imagine this: the lights are off and your nails are „glowing” in the dark, wherever you are! Two magical shade.

5ml



700

701

The meetign of Color and Brill gel

This nail is made with 29 and 515 color gels
(the nail is made by Dóra Doviscsák).



Crystal
Nails®

ROYAL GEL

non-cleansing gels in one layer





ROYAL GEL

NON-CLEANSING GELS IN ONE LAYER

ROYAL GEL
4,5ml

1. **NEON**
Vibrant color

2. **DIAMOND**
Diamond effect, also in Royal Gels.



ROYAL GEL

NON-CLEANSING GELS IN ONE LAYER

ROYAL GEL

4,5ml



R82
Neon green



R83
Neon yellow



R84
Neon tangerine



R85
Neon coral



R86
Neon pink



R87
Cognac-burgundy



R88
Cocoa



R89
Rouge noir



R90
Rusty brown



R91
Shark grey



R92
Cuban orchid



R93
Sparkling cherry



R94
Night purple



R95
Flame-red



R96
Punch frosty



R97
American peanutbutter



R98
Honeydream



R100
Blue lagoon



R101
Sleepy blue



R103
Playful pink



R105
Cream powder



R106
Wild cherry gel



R108
Foggy dawn



R109
Petrol green



R111
Indian curry



R112
Honey pumpkin



R113
Guacamole



R114
Peruvian pecan



R115
Black forest cake



R116
Peachy sage



R117
Rosewater



R118
Japanese lilac



R119
Dutch tulip



R120
Ultraviolet



R121
Tropical turquoise



R122
Neonred



R123
Yellow daffodil



R124
Tea pink



R125
Mud therapy



R126
Khaki



1. **NEON**
Vibrant neon colors

2. **FULL DIAMOND**
Magnificent dazzling!

Lively, vivid colors with Royal Gel shades

This nail on the picture is made with **R35, R161 and R6 Royal Gels**. Decorations with **silver foil, Confetti Top Gel** and **Matte Black** (The nail is made by Kesztyűs Dóra).

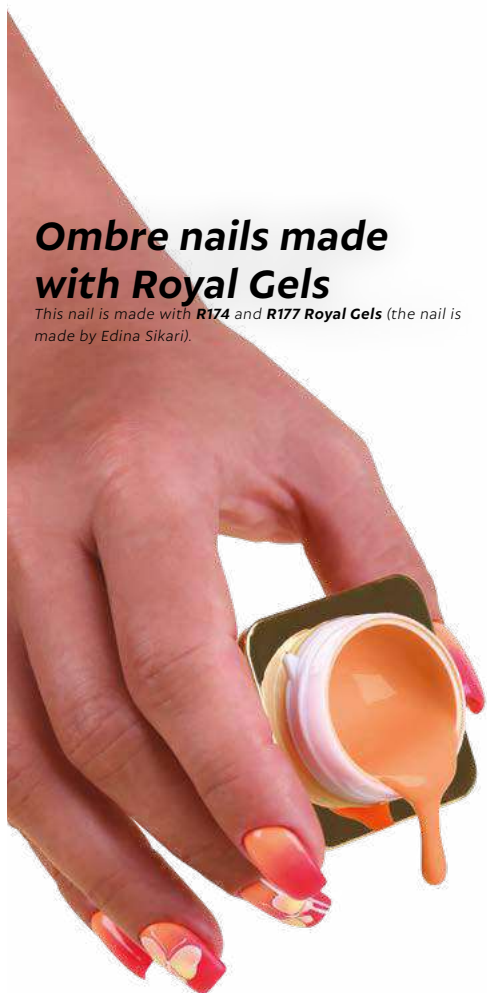




2. FULL DIAMOND
Magnificent dazzling!

Ombre nails made with Royal Gels

This nail is made with **R174** and **R177 Royal Gels** (the nail is made by Edina Sikari).



ROYAL GEL

NON-CLEANSING GELS IN ONE LAYER

ROYAL GEL
4,5ml

| | | | | | | | |
|--------------------------|---------------------------|----------------------------|-------------------------|-------------------------|------------------------|------------------------|------------------------------|
| | | | | | | | |
| R127 Honey nugat | R128 Smooth chinchilla | R129 Peachy fig | R130 Burning red | R131 Purple rhapsody | R132 Endless sky | R133 Maverick night | R136 Fuchsia on the loose |
| | | | | | | | |
| R137 China pink | R138 Pineapple sorbet | R140 Fresh coral | R141 Summer love | R142 Juicy pineapple | R143 Mango cocktail | R144 Neon lotus | R145 Malibu pink |
| | | | | | | | |
| R146 Cliff | R147 Punch nude | R148 Strawberry macaron | R149 Cherry bordeaux | R150 Golden nude | R152 Golden peach | R153 Golden charm | R154 Floating Island |
| | | | | | | | |
| R155 Pink tulip | R157 Spring turquoise | R158 Classic blue | R159 Miami vibe | R160 Green power | R161 Florida love | R162 Almond blossom | R163 Rose petals |
| | | | | | | | |
| R164 Aubergine purple | R165 Deep sea | R166 Holly | R167 Spicy punch | R168 Midnight blue | R169 EverGreen | R170 Sunset | R171 Quince |

ROYAL GEL

NON-CLEANSING GELS IN ONE LAYER

ROYAL GELEK

4,5ml – 2.490,-



R172
Spring sprout



R173
Fresh sky



R174
Tagetes



R175
Pink hibiscus



R176
Hawaiian rose



R177
Vibrant fuchsia



R178
Light lupine



R179
Ruby romance



R180
Dark poppy



R181
Mahagóni



R182
Pistachio



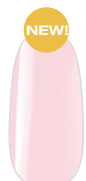
R183
Pale Rosette



R184
First Blush



R185
Peruvian desert



NEW!

R186
Potpurri



NEW!

R187
Orchid bloom



NEW!

R188
Bubblegum



NEW!

R189
Popcorn



NEW!

Very Peri



NEW! JOY ROYAL KIT

Cotton Candy.

The kit contains:



R186
Potpurri



R187
Orchid bloom



R188
Bubblegum



R189
Popcorn

NEW!



(4x4,5ml)

DOWNTOWN ROYAL KIT

Metropolitan fashion colors.

The kit contains:



R178
Light lupine



R179
Ruby romance



R180
Dark poppy



R181
Mahagóni



4x4,5ml)

MIAMI SUNRISE ROYAL KIT

Boxed sunshine.

The kit contains:



R174
Tagetes



R175
Pink hibiscus



R176
Hawaiian rose



R177
Vibrant fuchsia



(4x4,5ml)

ROYAL GEL KITS

NON-CLEANSING GELS IN ONE LAYER

SWEET PASTEL ROYAL GEL KIT

Soft pastel shades.

The kit contains:



(4x4,5ml)

FROZEN MIST ROYAL GEL KIT

Cool elegance.

The kit contains:



4x4,5ml)

ROYAL VELVET ROYAL GEL KIT

Deep velvety tones.

The kit contains:



(4x4,5ml)

STRONGER TOGETHER ROYAL GEL KIT

The contrast of light and dark colors.

The kit contains:



(4x4,5ml)

ELECTRIC VIBES ROYAL GEL KIT

Vibrant liveliness.

The kit contains:



(4x4,5ml)

NEVERENDING STORY ROYAL GEL KIT

Beautiful colors.

The kit contains:



(4x4,5ml)



DECORATION GELS

Special Nail Art Gels



NON-CLEANSING DECORATION GELS

NEW! SENS PLASTY GEL

This playful nail art gel could get the fantasy alive.

This is an extremely thick; plasticine consistency nail art decoration gel.

We recommend using a spatula to get the material out of the jar. Use 3D brush and cleanser for the working process. Non-cleansing product, it doesn't require any top gel.

For the preparation, we recommend you to use your fingers and hands (if you're allergic, use gloves). You can also use the SENS by Crystal Nails Natural 3D brush family to earn the required form. We suggest using a small amount of cleanser (not colored; not scented) for optimal usage. Curing time: in LED lamp is 1-2 minutes, in UV/LED is 2-3 minutes. We have 4 sparkling and 4 vivid color shades that bring a luxury appearance for all nails. We have 6 decoration colors which can be mixed.

5ml



Plasty Gel
Opal gold



Plasty Gel
Opal blue



Plasty Gel
Silver



Plasty Gel
Antique gold



Plasty Gel
Yellow



Plasty Gel
Green



Plasty Gel
Pink



Plasty Gel
Red



Plasty Gel
Blue



Plasty Gel
Brown

ART GELS

Gels which can be used for paintings, for those who love nail art. Thick, non-cleansing and extremely strong pigmented product. It could cover in a thin layer too. Thanks for the viscosity, it doesn't move or flow around while you working with it. It will cling it on shiny or matte surface and you don't have to cleanse it after curing. You can use it for One Move or Gel Painting technique; or make thin lines with it. With our Art Gels, the color transitions are more solid and homogeneous, the color of the patterns are more vivid and lively. It cures in UV and in LED as well. The cure time: in UV lamp is 3-4 minutes, in LED lamp is 2-3 minutes.

5ml



Art White



Art Yellow



Neon Yellow



Neon Orange



Art Baby Pink



Neon Korall



Art Fuchsia



Neon Pink



Art Red



Art Magenta



Art Violet



Art Purple



Art Royal Blue



Art Blue



Art Olive



Neon Green



Art Brown



Art Black



CN advice:

The Art Gel painting gel is only for decorations! It's not suitable for painting the whole nail surface or the free edge!

Apply an extra thin layer, to help the adhesion - minimal amount on the brush.

With the help of Ombre Sticks, sponge head brush to make the perfect transition of the Art gels!

Let's make babyboomer nails with the help of white Art GEL.



Use this to make flowers with one movement!

NON-CLEANSING DECORATION GELS



White

Yellow

Red



Blue

Green

Black

ART GEL PRO



It's available, in a practical jar version.

ART GEL PRO - CREAMY PAINTING GEL

Creamy, soft, strongly pigmented art gel makes the painting easier. The favorite attributes of the Art Gel remained unchanged: strong coverage even with a thin layer, non - cleansing. The Art Gel Pro has better, different consistency, which is easier to handle. The work with this product is way more faster and the result will be more homogeneous. We can draw a longer and thinner line, it won't break. The brush is almost glide by itself on the surface. It is a perfect choice for contouring, for drawing thin lines due to the color's intensity.

3ml



The Art Gel and The Art Gel Pro can be mixed together, so the variety of the colors is spectacular.



Cream 01

Cream 02

Cream 03



Cream 04

Cream 05

Cream 06



ROYALCREAM GEL - CREAMY ROYAL GEL

Non-cleansing, thick decoration gel which combines the thickness of the Art Gel and the easy-to-handle attribute of the Royal Gels. It doesn't stretch, the viscosity is like a pasta, it gives a perfect 3D effect for the painted pattern. It will cure perfectly, if you apply it with a thicker layer. The colors can be mixed whatever way you want to.

Cure Time: 2-3 min (UV), 1-2 min (LED)

3ml



Cream 07

Cream 08

Cream 09



Cream 10

Cream 11

Cream 12

Cream 13

Cream 14



Cream 15

Cream 16

Cream 17

Cream 18

Cream 19

NON-CLEANSING DECORATION GELS

BUBBLEGUM COLOR GEL

This decoration gel can be stretched without any break. Non-cleansing, and it doesn't require any cover. It can be combined with ChroMirror or any Pigment Powders, effect Powders. Skin Guard is recommended before using it, to easily remove from the skin. It can be used with decorating needle or brush. It can be stretched with a decorating needle or a brush, for geometric patterns. Cure time: 2-3min (UV), 1-2min (LED)

3ml



CN advise:

Cover the extra-thin pattern with top gel.



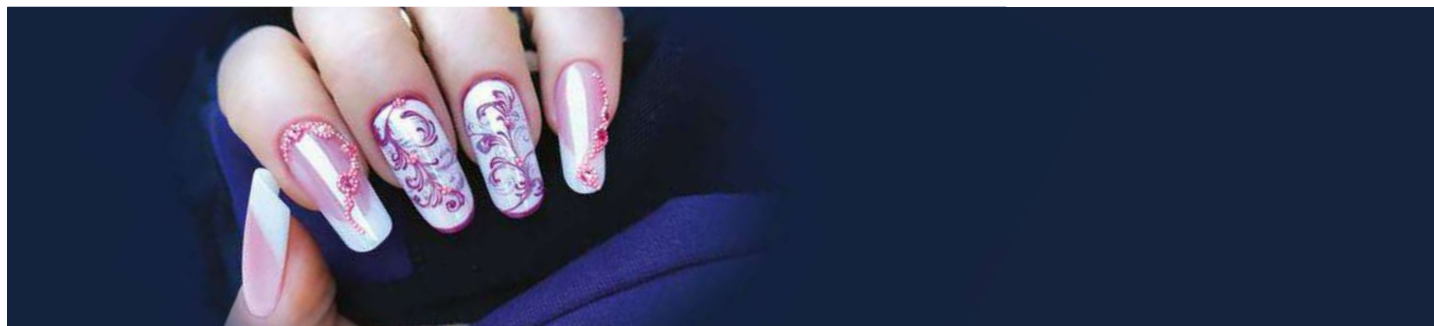
Can be stretched for long time in room temperature.

STAMPING COLOR GEL

Non-cleansing, highly pigmented stamping gel, which is re-usable: that means that you don't have to apply gel on the stamping plate so often, you can push the stamp more than once on the plate. If you using this gel, you don't have to race with time because it won't dry on air: only in lamp.

The curing time is 1-2 minutes in LED, 2-3 minutes in UV lamp.

3ml



NON-CLEANSING DECORATION GELS



White

Peach

Pink

Black



LACE GEL

The Lace Gel is an extra thick plasticine-like material, which we can use to make a perfect 3D patterns or apply it in a thin layer and create visionary lace patterns. Use it on the fully cured top shine! For making lace patterns, use a spatula for taking it out from the jar, apply it on the surface and with a little help of Cleanser. For working with it, we recommend you to use Mini 3D or 3D brushes or silicone brush. For the 3D patterns we can shape with our own fingers. Non-cleansing. We can colorized it with Art Gels, and don't cover it with anything. Cure time: 2-3 min (UV), 1-2 min (LED)

3ml



White

Rose

Nude

Champagne



ORNAMENT GEL - MAKE THE ORNAMENTS PATTERN-MAKING EASIER WITH OUR ORNAMENT GEL!

Non cleansing gel with medium consistency for those nail techs who love to make ornaments on the nails. It is perfect for drawing very thin lines or making thicker patterns with it. This product available in 5 colors.

The cure time: 2-3 minutes in UV , 1-2 minutes in LED.

5ml

The meeting of Art Gel and Lace Gel

This nail on the picture is made with 3S112 Crystalac, and the decoration is made with Art Gel and Lace Gel. (This nail is by Kesztyűs Dóra).



NON-CLEANSING DECORATION GELS

DESERT GEL - FROST EFFECT

It could be used to build a whole nail with it but it can be used for decoration as well, because of the thickness of the material. The specialty of this gel is the rusty „sand-ish” effect on the surface. You can scratch patterns to the surface, thanks for the thickness. You can make color-transition too, because they can mixing easily. It can be used for 3D effects because it can be cured in a thicker layer. It is available in 6 colors: white, peach, baby pink, lavender, baby blue and mint. We suggest you to use Gelly, Acrylic, Phantom or Art design brushes for the application!

Cure time: 2-3min (UV), 1-2min (LED)

3ml



White



Peach



Baby pink



Lavender



Baby blue



Mint



CN advise:

For making more colors, use a bit of Art Gels but you can mix them together perfectly.

3D GEL

Extra thick gel but easy to use, non-cleansing it can cure in thick layers as well which is good for 3D patterns. It will cling to the shiny surface as well. Easy to work with it if you use Mini 3D or 3D brush and for creating thin pattern or motives use 0 Short, Art Design or Phantom brush. After curing the surface will be shiny and dry.

Cure time: 3-4 min (UV), 2-3 min (LED)

5ml



808 White

HIGHLIGHT GEL

Brightly white, highly pigmented decorating gel which has a new practical jar look. It's a non-cleansing material that can be used for many decorating techniques or just by itself. You can use it even on top gels. Due to it is being highly pigmented, apply it thinly layer to the nail surface. You can also make french nails by painting them on the made nail surface. We DON'T recommend it as a replacement for gel polish because it is not a flexible material, in that case, use the Snowwhite 3S78 3 STEP Crystalac. The cure time: in UV lamp 3-4 minutes, in LED 2-3 minutes.

5ml



Highlight Gel

Crystal
Nails®

3 STEP CRYSTALAC - GEL POLISH

Extraordinary durability and fabulously vivid colors in 3steps



SENS BY CRYSTAL NAILS '3G POLISH'

MAXIMUM PIGMENTATION

SENS '3G POLISH' (GEL POLISH)
4ml

SENS '3G POLISH' (GEL POLISH) NAIL ART GÉLLAKKOK MAXIMÁLIS PIGMENTÁLTSSÁGGAL

These are thick and highly pigmented gel polishes. These 3 step CrystaLacs can cover the surface in just one thin layer. Made especially for gel polish decoration techniques. Colors can be mixed with each other, so you can create the required shades for any nail art and patterns. If you would like to weaken the colours or make them less vivid, we recommend you the Sens by Crystal Nails Gel Polish CLEAR 0. You can use it on the whole surface, but not the usual way as we use gel polishes: you have to get a small amount of material on the brush and push the brush a bit harder while you apply it on the surface. Use it in a thin layer and use a strong LED lamp for curing. Make sure, you cure them a little longer than the usual 3 Step CrystaLacs (especially the S007 Black). Cure time: 1-2 min (LED), 2-3 min (UV).



1. NEW! SENS CELEBRATION '3G POLISH' (GEL POLISH)
The SENS NAILS Celebration collection gives a reason to celebration by itself. These elegant, bright and matte gel polishes contain golden flakes. The usage is the same as with the decoration colors. For the arrangement of sequins, we recommend to use a thinner brush. You can use it on its own or also for decoration, it can be perfectly combined with the new S015 and S016 Sens gel colors.



2. SENS FLASH '3G POLISH' (GEL POLISH)

Light reflective and sparkly 3G Polish which is "only" a very vivid and sparkly gel polish in normal circumstances. But if it gets a light from the side or from the back it will be very shiny and sparkly. If you use a matte top gel, it will have a beautiful marble effect.



3. SENS MILKY '3G POLISH' (GEL POLISH) WHITE AND ROSE

The SENS '3G' (Gel Polish) product family is called MILKY after the effect since it has yellowing-free milky white and a soft feminine pinky shade. The Milky 1 is mild, while the Milky 2 is highly pigmented.

3 STEP CRYSTALAC

EXTRAORDINARY DURABILITY AND FABOLOUSLY VIVID COLORS IN 3 STEPS.

3 STEP CRYSTALAC

4ml

8ml

3 STEP CLEAR/TOP0 CRYSTALAC

15ml



3 STEP CRYSTALAC

EXTRAORDINARY DURABILITY AND FABOLOUSLY VIVID COLORS IN 3 STEPS

Extraordinary durability and fabulously vivid colors in 3 STEPS. This product is providing you the persistency of the color gels but it in a with the ease of polishes. It spreads gently on the nail surface. The curing time is 2-3 minutes in LED, but it only takes 1-2 minutes in UV, so your clients dont have to be careful with them as with a polish. Thanks for the PolyHybrid technology it is more durable and and has a better coverage rate. These colors are highly pigmented. The attached brush is perfectly matches the surface of the nail plate, so you can work more precisely and smoothly. This unique jar is not just spectacular but practical as well: your customer can easily pick their favorite color just look at them. The Base Gel of this product can be the Compact Base Gel, Compact Base Gel Plus, Builder Base Gel, Base Gel, Color Up Base Gel. For Top gel, we recommend you to use the followings: Clear 0/Top CrystaLac, Cool Top Gel Universal, Mattever Top Gel and Cool Top 4 Dark. The duration of the 3 Step CrystaLacs are approximatly 3 weeks. It can be soak-off about 10 min (deports on the thickness of the layer and the material what you use for removing). The curing time is 2-3 minutes in UV lamp , 1-2 minutes in LED lamp.



3 STEP CRYSTALAC

EXTRAORDINARY DURABILITY AND FABOLOUSLY VIVID COLORS IN 3 STEPS

3 STEP CRYSTALAC

4ml – 2.180,-

8ml – 2.750,-



Extraordinary durability and fabulously vivid colors in 3 STEPS.

The most durable professional solution - 3 week durability!



CN Advice:

For thin nails we recommend you to strengthen the nail plate with Compact Base or Elastic Hardener Gel.



3 STEP Crystalac Art Gel decorated

This nails is made with **3S97 Crystalac** and decorated with **Art gel** which by Kesztyűs Dóra.



3S53
Scarlet demon



3S54
Sensual bordeaux



3S55
Basic Instinct



3S56
Secret Rendez-Vous



3S57
Punch Glaze



3S58
Sparkling powder



3S59
Vivid Salmon



3S60
Mint-liqueur



3S61
Turquoise amulet



3S62
Caribbean blue



3S63
Ink



3S64
Orange blast



3S65
French fuchsia



3S66
Berry meringue



3S67
Wild raspberry gel



3S68
Scarlet currant



3S70
Chestnut



3S71
Sour blackberry



3S72
Mountain crystal



3S73
Peachy champagne cocktail



3S74
Glowing Crataegus



3S75
Tango Argetino



3S76
Diva-Blue



3S77
Oli Green



3S78
Snowwhite



3S79
Classical ecru



3S80
Persian Pearl



3S81
Majestic flamingo



3S82
Nice hyacinth



3S84
Neon lemonade



3S85
Neon flamingoflower



3S86
Ultraviolet



3S87
Neon red



3S88
Ivory



3S89
Peachy fig



3S90
Diplomat blue



3S91
Sweet chili



3S92
Champagne madness



3S93
Myanmar Ruby



3S94
Mistical Emerald



3S95
Exciting Blue



3S96
Banana shake



3S97
Tutti-frutti

3 STEP CRYSTALAC

EXTRAORDINARY DURABILITY AND FABOLOUSLY VIVID COLORS IN 3 STEPS.

3 STEP CRYSTALAC

4ml

8ml



Ombre transition

This nail is made with **3S149, 3S97, 3S35, 3S107, 3S131** and **3S132** Crystalac by Dovicscák Dóra.



Extraordinary durability and fabulously vivid colors in 3 STEPS.

The most durable professional solution - 3 week durability!



CN Advice:

For thin nails we recommend you to strengthen the nail plate with Compact Base or Elastic Hardener Gel.



The big glittery 3 STEP Crystalac are denser than the usual gel polishes, so when the material starts to run out, it can be extracted with the 4 gel brush too.

1.

NEW! CONFETTI CRYSTALAC

The new Confetti collection of the 3 Step CrystaLac product group is reminded of the gatherings of friends or family, parties, a good holiday, all the joyous experiences that bring happiness to life. These Milky shades contain different sizes of colorful glitters and they can be used individually in two thin or one normal layer. (Depends on the strength of the lamp.) There are bigger grains in it so recommended to use a 0 Short or Art Design brush to align the particles. They come in all shades of mica, so they look great combined with all the popular spring and summer colors.

2.

FULL DIAMOND CRYSTALAC

The dazzling Diamond Crystalac is sparkling more intensively than any other color -The must-have products for the lovers of CrystaLacs. 3 Step Crystalac formula with cremier texture!



3 STEP CRYSTALAC

EXTRAORDINARY DURABILITY AND FABOLOUSLY VIVID COLORS IN 3 STEPS

3 STEP CRYSTALAC

4ml

8ml



3S145
Glitter Turquoise



3S146
Glitter Pink



3S147
Glitter Gold



3S148
Glitter Rosegold



3S149
Candy Rose



3S150
Candy Violet



3S151
Candy Mint



3S152
Candy Blue



3S153
Orange Cocktail



3S154
Summer Melody



3S155
Cyclamen



3S156
Princess Pink



3S157
Pale rosette



3S158
Deep Sea



3S159
Olive branch



3S160
Khaki



3S161
After midnight



3S162
Rhodonite



3S163
Winery



3S164
Fuchsia Fedora



NEW! 3S165
Bubblegum



NEW! 3S166
Peach nectar



NEW! 3S167
Popcorn



NEW! 3S168
Jasmine green



NEW! Very Peri



NEW! 3SC1



NEW! 3SC2



NEW! 3SC3



NEW! 3SC4



3SFD1
Almond Buff



3SFD2
Warm Sand



3SFD3
Butter Rum



3SFD4
Pink Peacock



3SFD5
Rust



3SFD6
Burnt Henna



3SFD7
Inkwell



GL2
Ferrari red



GL24
White



GL55
Black



GL61
Nugat

3 STEP CRYSTALAC AND KITS

EXTRAORDINARY DURABILITY AND FABOLOUSLY VIVID COLORS IN 3 STEPS

3 STEP CRYSTALAC

4ml

8ml



GL77
Neon orange



3S908
Vanilla- Peach



3S909
Baby pink-
Nude mauve



3S910
Off white-
Steel grey

3. NEON CRYSTALAC

With the new types of pigments, it can be noticed from miles. The sensation is guaranteed.



4. CHAMELEON THERMO CRYSTALAC

They change their color for the heat, highly pigmented. They can never be bored on to, because they are changing their colors as the chameleons.



XTREME WHITE CRYSTALAC

This is the most whiter white in the history of white! For those who likes the white on their free edge. Highly pigmented of course, so use it in a thin layer.

4ml



Xtreme White

ESSENTIAL - 3 STEP CRYSTALAC STARTER KIT

The Essential 3 Step CrystaLac Starter Kit contains the most popular professional materials in order for the long lasting gel polish. 3 of the most favorite colors with the perfect foundation and cover in 1 kit. For professional use! The kit contains: 3S43, 3S47 and 3S66 3 Step CrystaLac 8ml, Compact Base Gel Clear 8ml, Cool Top Gel Universal 8ml, Acryl Remover 100ml, Nail Prep 15ml, IronX buffer 100/180, Cuticle Pusher, Remover Foil 20pcs



TRY ME! COLLECTION - 3 STEP CRYSTALAC KIT

This 3 Step CrystaLac try me kit is made for those who want to make sure about the CrystaLacs are indeed that durable and pigmented materials as they've heard. This is the trial of the original Gellacs.

The kit contains: Base Gel, GL2, Clear/Top 0

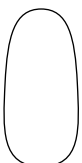
3x4ml



Base Gel



GL2



Clear/Top 0

NORDIC LIGHTS 3 STEP CRYSTALAC KIT

This 3 STEP CrystaLac kit is shining in all colors of the Nordic Light. It's Can be turned into a display easily.

Kit contains: 3S161, 3S162, 3S163, 3S164

4x4ml



3S161
After midnight



3S162
Rhodonite



3S163
Winery/
Burgundi



3S164
Fuchsia Fedora

3 STEP CRYSTALAC KITS

EXTRAORDINARY DURABILITY AND FABOLOUSLY VIVID COLORS IN 3 STEPS

NEW! CARNIVAL 3 STEP CRYSTALAC KIT

Parties, a good summer trip or family gatherings? That's what 3 Step Confetti Crystalac reminds us. This kit which will be gem of your salon can be easily turned into a display.

Kit contains: 3SC1, 3SC2, 3SC3, 3SC4

4x4ml

NEW!



NEW! 3SC1



NEW! 3SC2



NEW! 3SC3



NEW! 3SC4

NEW! EUPHORIA 3 STEP CRYSTALAC KIT

These vivid, playful, lively colors are not giving you an easy choice, so the best way is if you choose the display kit immediately.

Kit contains: 3S165, 3S166, 3S167, 3S168

4x4ml

NEW!



NEW! 3S165
Bubblegum



NEW! 3S166
Peach nectar



NEW! 3S167
Popcorn



NEW! 3S168
Jasmine green

URBAN LOOK 3 STEP CRYSTALAC KIT

These 3 deep green shades of the Urban look kit, were spiced with one pinch of nude romantic. These elegant shades are all in one kit for your clients so they can choose their favorite color.

Kit contains: 3S157, 3S158, 3S159, 3S160

4x4ml



3S157
Pale rosette



3S158
Deep Sea



3S159
Olive branch



3S160
Khaki

MALIBU SUNSET 3 STEP CRYSTALAC KIT

These wild shades are in a trendy kit which could easily be turned into a display. These hot cocktail shades will stand out everyday.

Kit contains: 3S153, 3S154, 3S155, 3S156

4x4ml



3S153
Orange Cocktail



3S154
Summer Melody



3S155
Cyclamen



3S156
Princess Pink

3 STEP CRYSTALAC KITS

EXTRAORDINARY DURABILITY AND FABOLOUSLY VIVID COLORS IN 3 STEPS



3S149
Candy Rose



3S150
Candy Violet



3S151
Candy Mint



3S152
Candy Blue



ALMOST WHITE 3 STEP CRYSTALAC KIT

We all know that most of the clients love the white color and its shades that's why all lovers of light shades will find their favorite product, not just the brides.

Kit contains: 3S149, 3S150, 3S151, 3S152

4x4ml



3S100
Golden ecru



3S101
Golden nude



3S102
Golden mauve



3S103
Golden coral



GOLD CANDY 3 STEP CRYSTALAC KIT

Sparkling, golden glitters new Gold Candy Crystalacs in one kit. 4 exceptional CrystaLac shade for the chilly days to feel a little more comfy and warm.

Kit contains: 3S100, 3S101, 3S102, 3S103

4x4ml



3S133
Stonecrop



3S134
Avocado



3S135
Cactus



3S136
Fern



HEAL THE WORLD 3 STEP CRYSTALAC KIT

The 1S133 Stonecrop and the 1S134 Avocado are an ashen like shades meanwhile the 1S135 Cactus and the 1S136 Fern could be your darker accessories of your salon. You can turn this kit into a magnificent display with a few moves.

Kit contains: 3S133, 3S134, 3S135, 3S136

4x4ml



3S127
Vivid Kiwi



3S128
Dynamic Yellow



3S129
Vibrant Orange



3S130
Lively Red



NEON DREAM 3 STEP CRYSTALAC KIT

Ready, set, summer! 4 awesome neon 3 Step CrystaLac color in a beautiful box what you can easily transform into a nice display.

Kit contains: 3S127, 3S128, 3S129, 3S131

4x4ml

3 STEP CRYSTALAC KITS

EXTRAORDINARY DURABILITY AND FABOLOUSLY VIVID COLORS IN 3 STEPS

FAIRY TALE 3 STEP CRYSTALAC KIT

Sparkling, dazzling in silver 3 Step CrystaLacs are in 1 beautiful kit. 4 fabulous shade for make your customer the most beautiful for the spring!

Kit contains: 3S123, 3S124, 3S125, 3S126

4x4ml



3S123
Fairy Coral



3S124
Fairy Rose



3S125
Fairy Princess



3S126
Fairy Violet

DEEP CONCEPT 3 STEP CRYSTALAC KIT

Just take the jars and the display crown out of the box, and lay it down. Let this fabulous winter kit be the decoration of your desk!

Kit contains: 3S137, 3S138, 3S139, 3S140

4x4ml



3S141
Poinsettia



3S142
Rum&Choc



3S143
Sweet Plum



3S144
Pine

FULL DIAMONDS 3 STEP CRYSTALAC KIT

This remarkable 3 Step CrystaLac is sparkling more than our full Diamond Colors. This is a must-have kit for the fans of the Crystalacs.

Kit contains: 3SFD1, 3SFD2, 3SFD3, 3SFD4

4x4ml



3SFD1



3SFD2



3SFD3



3SFD4

SPREAD LOVE 3 STEP CRYSTALAC KIT

The kit includes the same colors as the most attractive lipstick shades. You can recommend the charming 3S137 Wild Strawberries and the 3S138 Cinnamon Plums to those who like pink shades, while 3S139 Turkish Hazelnuts and 3S140 Cranberries represent darker colors. The box can be turned into a display.

Kit contains: 3S137, 3S138, 3S139, 3S140

4x4ml



3S137
Youngberry



3S138
Cinnamon plum



3S139
Turkish hazelnut



3S140
Cranberry

♥ From the 56th to the 59th page, all of the kits can be turned into a display! The only exceptions are the Essential the Try me, the Full Diamond and Gold Candy kits.

SPECIAL EFFECTS

CHROMATIC CRYSTALAC

Bring some twist to your work with the Chromatic Crystalac, which has a color-changing, hologram-like effect, a new member of the 3 Step CrystaLac. Gleaming playfully in the sunlight, the color-changing effect has long been the favorite for a long time which was not available in 3 STEP gel polish ever before! The usage of this product is identical to the other 3 Step CrystaLacs, despite that the result will be wonderfully glittering and sparkling in the sunlight. It will cover nicely on its own, but you can use different colors, it depends on what kind of effect you would like to achieve. The curing time is 2-3 minutes in UV lamp and 1-2 minutes in LED. CN Advice: The Rosegold shade is a perfect match to the Cover nr. 2 CrystaLac.



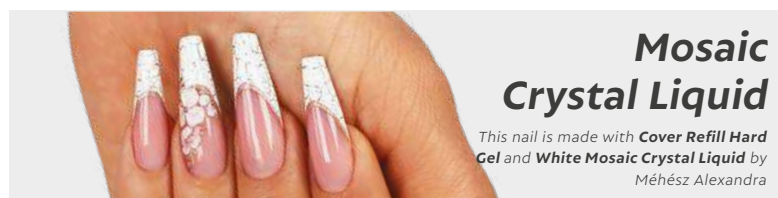
GLASSY CRYSTALAC

THIS GLASSY EFFECT WILL MAKE EVERY COLOR MAGICAL AND BEAUTIFUL. This glassy effect will make every color magical and beautiful. These flexible, soak-off gel polishes are capable of creating many kinds of effects and are available for a limited time. Use them with the Tiger Eye Infinity CrystaLacs, the glittery CrystaLacs, or the ChroMirorr Pigment Powders for breathtaking results! Curing time: 3-4 min (UV); 2-3 min (LED)



MOSAIC CRYSTAL LIQUID

Go crazy with our new spring shades by the Mosaic Crystal Liquid decoration gel. Use this on vivid color or any sparkling material and let the liquid do its job! If you would like to reach smaller cracks, apply it in a thin layer but if you want to see more massive, more spectacular cracks, use it in a thicker layer.



SPECIAL EFFECTS

AURORA CRYSTAL LIQUID

The Aurora Crystal Liquid is an art liquid that can change the color depending on the temperature and it will look like the Aurora Borealis a.k.a the northern light. You can use it on any CrystaLacs or Color Gel surface, but we recommend you to use a darker shade to prevail over the whole color scale. Use this way: Matte (use a buffer) the non-cleansing base or if you use a material that requires cleansing, cover the surface with Cool Top Gel Universal and then matte the surface.

Use any of the patterns (tendrils, flowers geometric patterns, etc.), then apply Aurora Crystal liquid to the nail surface, and wait for it to dry on air. It needs 3 -4 minutes depending on the thickness of the layer, which can be faster if you are using f a fan. When it is dried, the product will be translucent (see-through). After this, you have to file the edge of the nail and finally cover it with Cool Top Gel Universal and close it. Attention! If you use this product for the whole nail plate, the material won't remain durable. Use it for decorations that don't reach the edges of the nail plate.



WATERPRO CRYSTALAC

NON-CLEANSING, SOAK OFF, CRYSTALACS FOR THE PROFESSIONAL „WATERWAY” TECHNIQUE

You can drop any type of 3 STEP CrystaLac or ONE STEP CrystaLac into this noncleansing, soak off WaterPro CrystaLac and with a brush (0 Short or 0 Long) or with a nail art needle you can create different designs.



Marble nails with Waterpro CrystaLac

This nail on the picture is made with **35133** and **35149 CrystaLac**. The decoration is made with **WaterPro CrystaLac** and **Glam Glitters 3** by Pásztor Dóra.

SPECIAL EFFECTS

COVERPRO CRYSTALAC – WHITE

This regrowth free technique was brought from nail sculpting to gel polishing. We create the regrowth free gradient in gel polishing, like we do in case of artificial nails. As the color is mashed towards the root of the nail, the regrowth will remain invisible. We recommend to use it for french nails.



White



COVERPRO BRUSH

Rounded edges, natural hair. Especially developed for this technique.

Rounded
Marten fur

AQUAINK CRYSTAL DROPS

The new generation among the art liquid product lines. Faster than ever, and easy to use. The best base color for this material is white but you can use any pastel or „full cover” color (Milky Rose Compact Base Gel or the new Crystalac Cover Nr. 1). What is important that the surface must be scratch free and completely matte.

Recommended brushes: Phantom, Art Design, Aquarell. Relative liquids: Nail Prep, Cleanser, Acryl Remover, Easy Remover.

Layer order: color, Cool Top Gel Universal, scratch-free buffing, Aqualnk Crystal Drops, Cool Top Gel Universal (we don't recommend using Cool Top 4 Dark, it could cause fading).



CN advise: We could make a brighter surface using Aceton, with Nail prep we could make a "more blurred" effect.

Colored Aquarell effect with AquaInk Crystal Drops

This nail is made with 3S78 CrystalLac and purple, orange and yellow Aquink Crystal Drops by Dóra Kesztyűs



SPECIAL EFFECTS

TIGER EYE CRYSTALAC

REAL TIGER EYE EFFECT, THANKS FOR THE SUPER STRONG MAGNETS

We can see a unique tiger eye effect on the nail as we move the hands in the lights: the reflection of the light will move around on the nail. Because of a very special component, we can control the particles inside the gel, using the magnets. Use the magnets after the 2nd layer. Hold still above the surface of the nail around 3-4 mm for 4-5 sec and then cure it. Curing time: 2-3 minutes, LED 1-2 minutes.



TIGER EYE INFINITY CRYSTALAC

This product line has been waiting for a long time now! The Infinity tiger eye effect not just reflects the lights, it even changes its color! It is now available in 9 beautiful, highly pigmented shades. Every shade changes if you look at it from a different angle and it reacts to the natural warm/cold lights and artificial lights differently!! One shade is not just providing us only one, but three different colors to see.

Curing time: UV: 2-3min, LED: 1-2min



NEW COLOR! TIGER EYE INFINITY CRYSTALAC HOLO

The latest trend among Tiger Eye Infinity Crystalacs is the Holo shade, which not only shows a glowing-moving stripe but also sparkles like a rainbow on the nail surface when magnetized from the 4 sides. Different dimensions of the material can be achieved by smearing the magnetic holo mica on nails with different colored base. Attention! You have to use the same side of your magnet -for all 4 sides – to earn the desired effect.



SPECIAL EFFECTS

TOOLS FOR TIGER EYE INFINITY CRSYTALAC

MULTIFORM TIGER EYE MAGNET

This TigerEye Magnet could be used to create more and new shapes in the TigerEye universe. The strong magnet covers the whole surface of the product, and it could be use to make S, X, + shapes. Be creative and use the different parts of the magnet. Size: 8,2 CM



CN TIGEREYE MAGNET – LARGE

We recommend it for magnetic techniques



TWO-HEADED EXTRA STRONG TIGER EYE MAGNET

Two-headed magnet with a thicker, extra strong magnet.



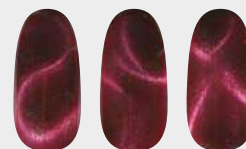
CN TIGEREYE MAGNET – SMALL



DIFFERENT PATTERNS WITH TIGER EYE MAGNET ON TIG12 TIGER EYE BASE



Patterns with the Two-headed extra strong Tiger Eye magnet

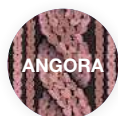


Patterns with Large Tiger eye magnet

AURORA CRYSTALAC - SOFT SWEATER LIKE

The Angora 3 Step CrystaLac is the favorite of the holiday/winter season. This is the re-thought version of the most popular sweater patterns. Decorating it with the RoyalCream Pasta-gels, we can create some special winter designs.

Curing time: UV: 2-3min, LED: 1-2min



Angora 1



Angora 2



Angora 3



Angora 4



Crystal
Nails®

ONE STEP CRYSTALAC GEL POLISH

Gel Polishes In One Step





Non-cleansing, flexible, soak-off, with a brush CrystaLac. Maximum 2 layers on non-cleansing. If you want to make it brighter apply ONE STOP 0 TOP, Cool Top Universal or Cool Top 4 Dark.

Duration is about two weeks.

Curing in UV lamp is 2-3 minutes, in LED is 1-2 minutes.

VIVID GELPOLISHES, QUICKLY



**Vivid colors
in one layer**



This nail was made with 1S92 ONE STEP Crystalac, Aurora Top Gel and Cn glitter - Mermaid effect 5 by Roxána Sárközy-Eigner



CN Advise:
in case of a thin nail,
strengthen the nail with
Compact Base Gel or
Elasty Hardener Gel!

ONE STEP CRYSTALAC

VIVID GELPOLISHES, QUICKLY

★ Use 1S98 CN 1S98 - Blinding white under the sparkling ONE STEP CRYSTALAC, try it on dark base as well.



| | | | | | | | |
|-------------------------------------------------------------------------------------|-------------------------------------------------------------------------------------|-------------------------------------------------------------------------------------|--------------------------------------------------------------------------------------|---------------------------------------------------------------------------------------|---------------------------------------------------------------------------------------|---------------------------------------------------------------------------------------|---------------------------------------------------------------------------------------|
|  |  |  |  |  |  |  |  |
| 1S86 Raspberry extasy | 1S87 Soft marshmallow | 1S88 Creamy Huckleberry | 1S89 Smooth mint | 1S90 Nevada neon | 1S91 Bikini party | 1S92 Lavender Cocktail | 1S93 Summer rain |
|  |  |  |  |  |  |  |  |
| 1S94 Soft satin | 1S95 Powder beige | 1S96 Loudy cyclamen | 1S97 Rubin amulett | 1S98 Blinding white | 1S99 Sparkling mistletoe | 1S100 Sparkling meringue | 1S101 Sparkling peach |
|  |  |  |  |  |  |  |  |
| 1S102 Blooming Calla | 1S103 Fresh magnolia | 1S104 Summer peony | 1S105 Silky buttercup | 1S106 Pale rosette | 1S107 Blackberry wine | 1S108 Smooth Twilight | 1S109 Olive branch |
|  |  |  |  |  |  |  |  |
| 1S110 After midnight | 1S111 Winery | 1S112 Fintess punch | 1S113 Adobe | NEW! 1S114 Potpurri | NEW! 1S115 Bubblegum | NEW! 1S116 Cascade | NEW! 1S117 Glacier |



CN advice:

in case of a thin nail, strenghten the nail with one of our compact base gel.



Super fast and gentle

ONE STEP CRYSTALAC

VIVID GELPOLISHES, QUICKLY



NEW! 1S114
Potpurri



NEW! 1S115
Bubblegum



NEW! 1S116
Cascade



NEW! 1S117
Glacier



1S110
After midnight



1S111
Winery



1S112
Root beer



1S113
Adobe



1S90
Nevada neon



1S91
Bikini party



1S92
Levander



1S93
Summer rain



1S86
Loud Cyclamen



1S87
Soft marsh-
mallow



1S88
Creamy huck-
leberry



1S89
Smooth mint



1S98
Blinding White



1S99
Sparkling misletoe



1S100
Sparkling merlingue



1S101
Sparkling peach



At this page you can find all of our kit which can be turned into a display

NEW! DELIGHT ONE STEP CRYSTALAC KIT

This new Delight One Step Crystalac kit is shining in fresh and happy colors which has 2 feminine and 2 bold shades inside. This could be turned into a display it helps your clients to choose.

The kit contains: 1S114, 1S115, 1S116, 1S117

ARCTIC DARKNESS ONE STEP CRYSTALAC KIT

Dark, magical colors in one kit which you can transform into a display with one movement.

The kit contains: 1S110, 1S111, 1S112, 1S113

ENERGY FLOW ONE STEP CRYSTALAC KIT

These are beautiful, searing colors in this kit, which you can transform into a display.

The kit contains: 1S90, 1S91, 1S92, 1S93

SECRET GARDEN ONE STEP CRYSTALAC KIT

Fabulous, girly shades and they will fly your customer to the magical fairy world! The trend colors of the spring in one kit.

The kit contains: 1S86, 1S87, 1S88, 1S89

SHIMMERING ILLUSION ONE STEP CRYSTALAC KIT

Sparkling nude shades which you can make the real princess nails. Use Blinding white 1S98 shade under the CrystaLacs with effect. Just put out the jars take out the display crown from the box and lay it down. Be these magnificent colors the jewelry of your workstation! The „effect colors” could be reached in 1 layer, slight coverage could be reached in 2 thin layers.

The kit contains: 1S98, 1S99, 1S100, 1S101

At this page you can find all of our kit which can be turned into a display except No Buffer One Step Crystalac Starter kit.

BABY PINK ONE STEP CRYSTALAC KIT

Four soft, feminine shade is inside the Pink One Step Crystalac Kit which are all guest-favourite colors. Moreover the display which could be turned into a display will bring joy to your salon.

The kit contains: 1S102, 1S103, 1S104, 1S105



CITY CHIC ONE STEP CRYSTALAC KIT

4 deep surely missed shade are inside the City Chic One Step CrystaLac Kit, which will dress up you guests's nails.

The kit contains: 1S106, 1S107, 1S108, 1S109



KEEP CALM ONE STEP CRYSTALAC KIT

A bit burgundy, a bit beige and they're all in magnificent box! Just take the jars and the display crown out of the box, and lay it down. Be this fabulous kit the jewelry of your desk!

The kit contains: 1S94, 1S95, 1S96, 1S97



NO BUFFER ONE STEP CRYSTALAC STARTER KIT

Starter kit with NO BUFFER SCRUB- ONE STEP gel polishing is now more delicate than ever before! The kit contains every necessary material and tool for ONE STEP CrystaLac gel polishing. The kit contains: color ONE STEP CrystaLac 8ml (1 color / kit) enough for approx. 30 complete manicure, No Buffer Scrub 30ml, Super Shine Optic 8ml, lint free pads, five-finger LED lamp, orange wooden stick, metal cuticle pusher.



ONE STEP CRYSTALAC

VIVID GELPOLISHES, QUICKLY



Crystal
Nails®



FOR THE LOVERS OF COLORS

Crystal
Nails®

BUILDER AND COLORED ACRYLICS



MASTER POWDERS

FASTER CURE TIME, CURE SMOOTHLY AND QUICKLY . FOR COMPETITIONS AND EXPERIENCED NAIL TECHNICIANS. THE EVEN GROUND ACRYLIC GRAINS ENSURE THE NON-BUBBLE COVER



CRYSTAL CLEAR

- water-clear transparent powder
- due to its fast cure it is excellent for covering the free edge so that the materials shall cure at the same time and the nail could be sculpted easily
- being so clear it is suitable for covering colored free edges



SUPER WHITE

- bright white
- fast-cure acrylic powder



DARK PINK

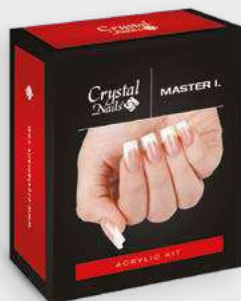
TRANSPARENT, DARKER PINK POWDER

- excellent on top of Cover Pink powder for nail bed enhancement
- for a darker skin type
- it makes a beautiful contrast with a white free edge for nails without nail-bed extension

MASTER I. ACRYLIC KIT

THE KIT CONTAINS:

- Master powders (Dark Pink 3,5g, Crystal Clear 3,5g, Super White 3,5g)
- Liquid 30ml
- Crystal Nails form sample



MASTER II. ACRYLIC KIT

THE KIT CONTAINS:

- Master powders (Dark Pink 3,5g, Crystal Clear 3,5g, Super White 3,5g)
- Liquid 30ml
- Crystal Nails form sample



For experienced nail techs and competitors: creamy, a more faster curing powders. For the beautiful French nails, specifically designed for the customer needs.

SLOWER POWDER

SLOWER CURE TIME, SMOOTHLY AS POSSIBLE. CAN BE SHAPED, SCULPTED AND CURVED FOR A LONGER TIME. THESE POWDERS ARE GOOD FOR LESS EXPERIENCED ACRYLIC NAIL TECHNICIANS, NON-YELLOWING, CREAMY FORMULA, BUBBLE-FREE, DUE TO ITS FINELY GROUND INGREDIENTS.



For the slightly slower pace of work: creamy powders with a slower curing time and a longer formability. Thanks to the fine grinding, the powder-liquid scoop applied to the brush has a creamy texture, can be easily shaped and is bubble-free.



TRANSPARENT PINK

- lighter, transparent pink
- for a lighter skin type
- for the less experienced nail technicians it's good for nail-bed enhancement



ULTRA WHITE

- bright white
- perfect for salon work as well as for competitions



CRYSTAL CLEAR

- water-clear transparent powder
- due to its fast cure it is excellent for covering the free edge so that the materials shall cure at the same time and the nail could be sculpted easily
- being so clear it is suitable for covering colored free edges



SOFT WHITE NATURAL OFF-WHITE

- off-white powder
- for lovers of natural effects
- can also be used to create a nail moon in competitions

Available only in
17 g and 28 g



CN Advise:
For guests who
don't like dazzling
white nails

SLOWER ACRYLIC POWDER KIT

THE KIT CONTAINS:

- Slower Powders (Transparent Pink 3,5g, Ultra White 3,5g, Brilliant Powder 3,5g)
 - Liquid 30ml
- Crystal Nails form sample



COVER PINK POWDERS

OPTIMAL COLORS, GOOD COVERAGE, WIDE RANGE OF COLORS, MATCHING TO ALL OF SKIN TYPES, EASY TO SHAPE AND SPREAD, LONGER SHAPING TIME

POPULAR

The winning material of the World Champion



COVER PINK NAILBED EXTENSION PINK

- warm color effect, popular general color
- the most popular shade
- matches with most of the skin tones

Available only in 17 g and 28 g



COVER PINK NEXT DARKER PINK NAILBED EXTENSION

- darker, violet-like color
- cold shade
- perfect cover formula
- can be combined with lighter shade free-edge

Available only in 17 g and 28 g



COVER PINK X LIGHTER NAILBED EXTENSION PINK

- light baby pink colour
- cold-effect
- perfect cover formula
- for lighter skin tones
- can be combined with dark free edges easily

Available only in 17 g and 28 g



COVER PINK CRYSTAL SPARKLING PEARLY WHITE

- Beautiful pearly color
- Silvery ice-crystal shine, cold-effect
- Its base is the Cover Pink so it matches with most of the guests' skin tone



The cover pink material is for the aesthetic extension of the nail bed and to eliminate the growth of the smile line, which is the same colored material as the natural nail bed. It is available in a variety of colors to find the right shade for every skin type. It should be thicker than the smile line for proper coverage. Thin it towards the cuticula so that the outgrowth becomes invisible. If required, cover the Cover Pink with clear pink acrylic powder for a more vibrant color - or use it alone.



**Acrylic is
in the lead**

The nail was made with **Cover Pink** and **Crystal Clear acrylic powder** by Virág Halász

BABYBOOMER ACRYLIC KIT – FOR BABYBOOMER TECHNIQUE

BabyBoomer technique is very popular among the sophisticated clients. The essence of it is that the white free edge is mashed with the nailbed pink. So this technique makes you capable of building a nail what will look like if it's growing slower, and the result is more natural than in case of classic French nails. With this kit, you can easily create the this design, the only thing you need is your favorite acrylic brush. (On the BabyBoomer nails any type of nail art design looks amazing, such as Sugar Effect, velvet powder, Crystal mermaid powder or gel painting.)

The kit contains:

- Soft White Slower Powder 17g
- Xtreme Crystal Clear Slower Powder 17g
- Cover Pink Master Powder 17g



CRYSTAL LIQUID

High quality liquid, which provides a suitable cure time for the acrylic powders. Relentlessly strong, fragrant air-cure, blue liquid, in which the acrylic grains are binding in a very strong way; they stick into the surface of the nail and do not give room to yellowing. Due to its special nature it provides flexibility to the material when being decorated and sculpting.

UV LIQUID

Odorless, clear liquid. It is characterized by a longtime shaping time (can be formed endlessly) since it cures only in the UV lamp. Due to the sticky layer forming on the surface working with it can be slower than the scented version.

Strong liquid
with maximal
adhesion.

The material
of the World
Champion



LIQUID HOLDER

Double-walled thermal-balance liquid container for your acrylic cure not to accelerate in the summer and slow down in the winter. It provides the optimum temperature for the appropriate cure. The brush can be dipped into the liquid completely without touching the bottom of the jar. This way more fluid can be put on the brush and the brush tip will not be damaged. The cork will stop the liquid to evaporate.



ACRYLIC COLOR POWDERS

STORNG PIGMENTATION, OPTIMAL CURING TIME, FINE GRINDING



7g

High covering formula with a wide variety of powders. Finely ground, they require more liquid than the building powders. Powders containing color pigments, glitters must be absorbed by a dry paper towel in order to get the proper color and texture. Thus your favorite color acrylic will be easy to use. When using them build a thin transparent base, or put directly onto the template. Cover them with Clear material.



Remarkable and vivid,
good coverage

1. METAL POWDERS - SNOW CRYSTAL COLLECTION

Snow crystal collection - fine sparkling with velvety effect

2. BRILLIANT ACRYLIC POWDER

Spectacular brill effects, colours and shine. Amazing coverage. Around 300 colours – 15 different effect.

ACRYLIC COLOR POWDERS

STORNG PIGMENTATION, OPTIMAL CURING TIME, FINE GRINDING



2. BRILLIANT ACRYLIC POWDER

Spectacular brill effects, colours and shine. Amazing coverage. Around 300 colours – 15 different effect.

3. DIAMOND POWDERS

2 sparkling diamond for the holiday

4. GIGA PIGMENT FINE POWDER

Extra finely ground, gigapigmented color decor creamy acrylic powder.

5. FULL DIAMOND POWDERS

Shine bright like a diamond! More stronger shining than ever before!



Built acrylic nails with colored ends

The nail was made with **Cover Pink**, **Transparent Pink acrylic powder** and the decoration was made with **white Xtreme Aquarell** by Edina Sikari



PREPARATORY AND ADDITIONAL LIQUIDS



PREPARATORY AND ADDITIONAL LIQUIDS

SPECIAL FIBERLESS WIPES (WITH GUAVA SENT)

It allows you to easily remove all sticky and dusty dirt from the surfaces. It is especially effective for cleaning the surfaces of jars and bottles, also for removing other surface contaminants. Thanks to its unique formula, it leaves no marks and does not corrode treated surfaces. In addition, with its large size and special non-fibrous, thick material, the cloth holds moisture well and traps dirt. This allows you to clean multiple surfaces at once with a cloth with the scent of exotic guava.



SPECIAL FIBERLESS WIPES
AND ISOPROPYL ALCOHOL FORMULA

CN CRYSTALSEPT ALCOHOLIC STERILIZER SPRAY AND REFILL

A disinfectant for smaller, alcohol-resistant surfaces. It can be used as manicure, pedicure tools. (for the table, for stainless steel tools, files, and other alcohol-resistant and waterproof accessories to be disinfected). Antimicrobial spectrum: bactericide (MRSA), tuberculocide, fungicide, virucide (HBV, HIV inactivating). Available with a practical pump dispenser or as an economical 1 liter refill.



250ml

1000ml

CRYSTALWIPE NAIL AND HAND CLEANER WET WIPE (WITH CRANBERRY SCENT)

OPTIMAL PH VALUE

It allows you to easily remove all the staining that has accumulated in the nail folds and on the skin surface. It is especially effective for removing dust and skin residue accumulated after preparation from the nail folds and the surface of the nail plate. Also, removing excess cuticle oil is not a problem before photoshooting. With its unique formula, it cleans, degreases and nourishes the surface of the skin and nail in one step, and does not affect the adhesion of the materials. Thanks to its lactic acid content, it has an optimal pH value, so it does not dry out and leaves no traces on the skin surface. The special fluffy material of the cloth traps surface dirt and provides easy access to even the most difficult to reach areas. Using a cloth, you can clean up to all 10 nails and fingers with its magical scent of blueberries.



OPTIMAL PH VALUE AND
SPECIAL ISOPROPYL ALCOHOL
FORMULA

CN CRYSTALSEPT HAND STERILIZER SPRAY AND REFILL

Directly applied by undiluted form to the hands or other areas of the skin to be disinfected. It is a bactericidal, antifungal, and antiviral agent. Antimicrobial spectrum: bactericide (MRSA), tuberculocide, fungicide, virucide (HBV, HIV inactivating). It is also available in a practical spray dispenser version or as an economical 1 liter refill.



250ml

1000ml

PREPARATORY AND ADDITIONAL LIQUIDS

CRYSTALSEPT CRYSTALSEPT STERILIZING SOAP AND HAND STERILIZER GEL

Directly applied by undiluted form to the hands or other areas of the skin to be disinfected. It is a bactericidal, antifungal, and antiviral agent.

Sterilizing hand washing soap. Antimicrobial spectrum-effect: bactericide, yeasticide. Available with practical, fresh Lemon scents.

These antiseptic gel can be use without water. These aren't just protects from the, "usual" bacteria but protects from viruses and fungus as well. Antimicrobial spectrum-effect: bactericide (MRSA), fungicide, tuberculocide. Available with practical, pumping dispenser Nature and Aloe Vera scents.



SPRAY PREP ALCOHOLIC

A large amount of nail preparatory liquid in a practical pump spray form. It can be used as a hand and nail cleaning spray at the beginning of the treatment. Due to its degreasing effect it helps the adhesion of the template on the skin. For template building instead of Nail Prep we should use it as dehydrating cleaning liquid sprayed in the nails.



1.



STEPS OF USAGE OF THE LIQUIDS:

1.

2.

3.

only for problematic nails

NAIL PREP

Fungus preventive and dehydrating, PH-balancing preparatory liquid. Before using the Primer you have to wait until it dries completely. Its composition is the same as Spray Prep. Use it for building nails with tip.

ACID-PRIMER

Adhesion promoter liquid which distracts the moisture from the layers of the nail. After the drying of Nail Prep or Spray Prep it should be applied in a thin layer on the surface but before that the excess on the brush must be left on the bottle neck or absorbed by a dry towel. Due to its acid content it must not touch the skin. It must be fully dry because it completes its effect over time! If it gets on the surface in a thick layer the nail plate would only dry seemingly.

ACID FREE PRIMER

Completely acid-free, adhesion promoter liquid, which does not dry out completely it will still have a sticky layer. Therefore it should be applied in a thin layer, because this double-sided sticky part will function as an adhesive between the nail plate and the material that will be put on it. If we put more acid free primer, this sticky bit will be thicker so the material on it will not stick on the nail plate and will peel off. The excess on the brush must be left on the bottle neck or absorbed by a dry towel so that no extra amount will get onto the nail.

1.



2.



3.



PREPARATORY AND ADDITIONAL LIQUIDS

XTREME FUSION ACRYLGEL THINNER

This new additional liquid was developed for Xtreme Fusion AcrylGel. It does NOT dry the fur of the brush and it does NOT have an unpleasant smell like the liquid has. It makes the colors more vivid.



NO BUFFER SCRUB - MILD AND SUPERFAST PREPARATORY

Mild and superfast preparatory liquid for CrystalLac. Newly developed preparatory material that makes the classic CrystalLac and the ONE STEP CrystalLac processes ever so mild. The No Buffer Scrub replaces the use of Nail Prep/Spary Prep and the Primer as well as the buffering at ONE STEP CrystalLac. It has a strong dehydrating and degreasing effect so the nail does not need any more preparation. Soak a fiber-free paper towel in No Buffer Scrub and rub the nail with it thoroughly. To have a better result after some fingers change the paper towel and get a new one.



CN Advise:

It can be used on the nail without buffing or matting the nail.



CLEANSER - GEL FIXING

This cleansing product removes the sticky layer of builder gels and gel polishes. In different sizes.



CLEANSER GEL FIXING :

This scented cleansing product removes the sticky layer of builder gels and gel polishes. Leaves a nice scent on the skin and nail. In different sizes.



PREPARATORY AND ADDITIONAL LIQUIDS

SCENTED CRYSTAL NAILS TIP-, ACRYLIC AND CRYSTALAC REMOVER

Extra strong remover liquid for tip-, acrylic and Crystalac with aloe vera, gliceryne and panthenol. The aloe vera is nourishing and moisturizing the skin and the panthenol makes it so soft. In camomile and green tea scents.



Chamomile

Green tea

ACRYL REMOVER

Tip and acrylic remover liquid with lanolin that protects the skin from drying and becoming white.



Use it with
wrap foil

UNIVERSAL REMOVER KIT

With the help of the kit Crystalac, tip, acrylic and nail varnish can be removed easily. The removing process is more effective and material saving.

This kit contains:

- 20 pcs remover foils
- 2 pcs orange wooden sticks (to push back the cuticle and remove the dead skin from the nail plate)
- Acryl Remover
- Soft touch buffer



With Glam Glitters transition

This nails was made with **Milky Rose Builder Gel** and **Glam 1 Glitter** by Dóra Doviscsák

Crystal
Nails®

NAIL POLISHES & NAIL CARE



NAIL CARE

FUNGUS STOP

Contains tolnaftate, a super strong anti fungal substance. Rub one drop into each nail and the surrounding area.



DEFENDER

Creates a fast drying, hard layer on the top of the lacquer, prevents from chipping and abrasion. Makes the colors more vivid and shiny.



XTREME HARD

Creates a fast drying, hard layer on the top of the lacquer, prevents from chipping and abrasion. Make sthe colors more vivid and shiny.



HIGH SHINE

Extremely high shine, fast drying top coat.



DROPPER DRY

Reduces the drying time nail polish. Contains cuticle oil. Apply only one drop per nail.



HARDENER

Nail strengthener base coat,- developed for weak nails,with calcium, vitamin E and B.



2 IN 1 BASE AND TOP COAT

Prevents from yellowing, improves the adhesion of color polishes, gives you shine and protection.



NAIL CARE

CUTICLE OIL - NAIL CARE OIL

Nourishing oil for the skin around the nails.

SENS CUTICLE SERUM- Finish the therapy like a ritual with our newest 24K tinsel!

This skin-caring serum contains 24 carats golden grains, royal jelly, and silk amino acids in order to reach the maximum level of care. The ingredients have naturally intensive and deep hydration virtue which can help the skin remain tight and smooth. It has a slightly fruity scent. One of its advantages is that it is not oil-based so it helps the skincare without leaving a bright oily stain. After the use of the serum, the nailbed will be soft and ready for photo shooting. We don't have to start a long procedure trying to get rid of the remaining oil patches which would ruin the aesthetic of the picture. This new product is in an elegant jar that will be the jewelry of your salon.

CN advise: As the second step, you can use one of our cuticle oils to make the effect last longer.



UV TOP COAT TOP GEL

Due to its components, it makes a hard and shiny top layer that hardens in 60 seconds in a UV lamp not completely dry). With patented formula.

CUTICLE REMOVER

After 2 minutes, the solved skin can be removed with a cuticle pusher. It should not stay on the skin more than 5 minutes

RIDGE FILLER

Protects with seaweed extraction, fills all the ridges with micro crystals and help the regeneration of the nails.

WEEKLY TOP COAT - 7 DAYS LONH SHINE

Apply it over your nail polish, so it remains shiny even for 7 days. With the Weekly Top You can expand the lifespan of your favourite nail polish! Dries very fast, no need for UV lamp. Remove it with nail polish remover.



NAIL CARE

P. SHINE JAPAN KIT

Apply it over your nail polish, so it remains shiny even for 7 days. With the Weekly Top You can expand the lifespan of your favourite nail polish! Dries very fast, no need for UV lamp. Remove it with nail polish remover. It helps to regain the beauty and shine of nails given by nature, promotes healthy nail growth. As a result, our natural nails provide a brilliant feeling of comfort for our daily lives. The treatment will make the nail stronger, the color of the nail will brighten (more and more with each treatment), and the light will be extremely durable (it will not wear out because the material is incorporated into the nail plate). It can also have an extraordinary effect on pedicures.

P. SHINE MANICURE - PROFESSIONAL

The kit contains:

P.Shine Japanese manicure paste
P.Shine Japanese manicure powder
3 pcs of files
2 pcs of deerskin fine buffer
fine buffer kerchief
dosing spoon



The products in the kit can be purchased independently.

P.SHINE JAPAN MANICURE - HOME KIT

The kit contains:

P.Shine Japanese manicure paste
2 pcs of files
1 pcs of deerskin fine buffer



COAT THINNER



LACQUER CORRECTION PEN normal with 3 spare tips



CRYSTAL LACQUER CORRECTION PEN WITH SPARE TIPS

Crystal Nails quality, changeable tips.



SCENTED CRYSTAL NAILS NAIL POLISH REMOVER

Nail polish remover with aloe vera, glycerol and panthenol – in 1 liter and 100ml packaging. With its help, you can remove the nail polish easily, perfectly and fast, while it is gentle to the nails and hands. The aloe vera nourishes, the glycerol and panthenol make the skin soft. Rose and orange scents.



różsa

narancs

NAIL POLISHES

DECORATION COLORS

Crystal Nails nail polishes have the optimal viscosity, you can apply them without remaining spots or lines. The perfect elaboration of the brush and the unique silver cap also help your work. Thanks to the long lasting formula, our lacquers are super abrasion-resistant which could last for 5 days. We put brand new colors, such as french, chrome, holographic and iridescent into pretty, narrow bottles. Contains protein, in order to strengthen the natural nails.



NAIL POLISHES



1. FULL DIAMOND COLORS

Shine bright like a diamond!

2. SKIN EFFECT COLORS

Nail polishes with crazy skin-effect!

4. DIAMOND COLORS

Magical journey to the infinite: discover the deep space.

7. FRENCH COLORS

For traditional and modern nails

3. TINI EFFECT COLORS

Sparkling, glittery effects, real girly nail polish.



6. PARTY EFFECT COLORS

Prism technology, iridescent, multidimension colors.



NAIL POLISHES



7. FRENCH COLORS

For traditional and modern french polishing.

9. HOLOPRISM COLORS

Holographic color polishes, which have different effect from different angles.

8. LIQUID CRYSTAL COLOR

Like a ray of sunlight on the water.

10. COLOR2COLOR

The same number as GL polish.



Nail made with spicy red nail polish

This nail on the picture is made with **G2** nail polishes by Edina Sikari.

Crystal Nails®

FILES



FILES

XTREME FILES

Due to the newest grain-adhesion technology, they are more durable than ever. The files are much stronger and more durable than the traditional files consisting of flexible grains.



XTREME 100/180 (RED)

For stronger or larger material removal.



XTREME 150/150 (BLUE)

For shaping and tip filing.



XTREME 100/100 (PURPLE)

For surface filing and removing color gels/acrylics



XTREME 180/180 (GREEN)

For matting and finer filing



Flexible grains: do not cause scratches, do not slip on the surface, it clings into the material.

CLASSIC (ZEBRA) FILES

Our classic (zebra) files are made with finer Japanese paper. Therefore, the number associated with them indicates a finer type of files than Xtremes.

PROFESSIONAL 100/180 (RED)

For stronger or larger material removal.



PROFESSIONAL 150/150 (BLUE)

For shaping, tip filing and matting



PROFESSIONAL 100/100 (PURPLE)

For edge filing and removing color gels/acrylics



PROFESSIONAL 180/180 (GREEN)

For finer filing and refining



HIT files with Japanese paper

CN advise: Finer than the Xtreme files with the same number.

FILES

DISINFECTABLE AND TRADITIONAL FILES IRONX FILES 100/100, 150/150, 180/180, 150/180

Suggested for Fusion AkrilGel, 150/180 grade, waterproof, halfmoon shaped, specially coated file, 4-5 times more durable than the regular files, can be disinfected, easy to clean with a nail brush. The surface is extremely durable and stronger than the similar numbered Xtreme files.



ULTRA PROFESSIONAL 100/180



STRAIGHT BLACK 100/180. Durable grit



PINK 150/280. For natural nails



CURVED-STRAIGHT BLACK 100/180. Durable grit.



STRAIGHT WHITE 80/100 – For rough filing. 290,-



DROP 180/180. For matting 290,-



DROP SHAPED FILE For smile line, 100/150



WOODEN FILE 120/180. For hardly accessible locations such as sidewall points. For manicures and acrylic nails.



FILES/BUFFERS

XTREME STAINLESS STEEL FILES

They have exceptional durability, thanks to the stainless steel material strong 80/120 grains and it's not just for natural nails. This product can be used for manicure and pedicure as well because of the rounded shapes and 2 kinds of grains. Try them on sculpted nails or making the smile line as well

XTREME STAINLESS STEEL FILE, LONG STEEL FILES - 16 CM

For manicure and sculpted nails as well. 80/120



XTREME STAINLESS STEEL FILE - SHORT - 14 CM

With its shorter file surface and rounded tip, it is an excellent 2. choice for both pedicure and manicure work. 80/120



4X4 FILES KIT

If sometimes you cannot find – among your currently used materials and pieces of equipment – the file you need for the current step then we have good news for you! The 4x4 file kit is for you because it can be transferred into the file holder within a few seconds. Your file supply for a month can be kept in a practical holder: just tear down the top by the perforation and fold the two handles across each other towards the inside of the box so they will separate the file types.

The kit contains:

- 4 pcs of Classic (Zebra) 150/150 blue
- 4 pcs of Xtreme 100/100 purple
- 4 pcs of Xtreme 150/150 blue
- 4 pcs of Xtreme 180/180 green



Egy havi
reszelőadag,
extra
kedvezmény!



20%
kedvezmény

IRONX BUFFER

A new member of the IronX family with 4-5 times longer lifetime than conventional buffers. The surface is water repellent - it can be 100% disinfected.



FINING BUFFER, PINK

180/200 Stronger and more durable



FINING BUFFER, WHITE

220/280 Stronger, more durable



BUFFERS

BLACK-ORANGE BRICK BUFFER

100/180/180



BLACK-PURPLE BRICK BUFFER

60/100/100



WHITE BRICK BUFFER

180/180



FINE MATTING BUFFER

200/200 grit soft, flat, rectangular buffer. It contacts the nail on a big surface, so matting the nail takes only a few swipes. Due to its softness, it lines perfectly with the nail arch for better use. We use this buffer to prepare the nails for CrystaLac before using the No Buffer Scrub or Spray Prep materials. Due to its softness it is gentle, does not file deep into the nails. If we use this buffer for nail preparation, it will be easier to dissolve CrystaLac.



Gentle!

Don't file! Don't fluff! Matte gently!
CN Advise: To prepare for CrystaLacs.

MAGIC SHINE FINE-BUFFER - 2WAY

600/3000



MAGIC SHINE BLOCK FINE-BUFFER

600/3000. It covers a lot of the nail surface at the same time.



MAGIC SHINE BLOCK FINE-BUFFER

600/3000. More thin than the others, the work is more comfortable with it. it is covering a lot of the nail surface at the same time.



CN advise:

use this product of its own for the beautiful shiny nails! In case of acrylic nails you can produce the finest result!

BRUSHES



BRUSHES

SENS SYNTHETIC ROUND BRUSH

Brush for gel sculpting with artificial hair, with a softer and longer design. This ensures a smoother application on the surface of the nail. The round edges help to work the gels around the cuticle in order to create the smile line. You can also use it for the precise painting of the gel polish or covering the whole nail surface.



SENS NATURAL 3D PRODUCT-LINE

3D XS/S SIZES:

These are best for creating small patterns. It provide us the opportunity to be more creative and artistic. You can use for gel polish decorations (e.g. flowers, leaves).



3D M SIZES:

Less amount of materials. Due to the size of the hair of the brush, it makes us easier to work with it more precisely. Not so flexible, so it's put pressure on it.



3D L SIZES

Recommended for bigger amount of materials and for creating bigger patterns. Due to its flexibility, it is good for filling the acrylic nails as well.



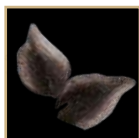
NEW! SENS SYNTHETIC BLEND BRUSH**DEVELOPED FOR ONE MOVE TECHNIQUES, SHADOWING.**

It has artificial hair in it. Flat, horizontal, sidelong and beveled brushes; they can make your work easier. They can be used for gel or acrylic paints as well. In order to choose well, consider the size of the pattern what you want to create.

S: for small patterns and for shadowing



M: for small patterns



L: for bigger patterns

**ÚJ! NATURAL LINER**

Akril, aquarell festéshez kifejlesztett **természetes szőrű, vonalzó ecset**, precíz formakialakítása lehetővé teszi akár a hajszálvékony vonalak húzását is. 6.290,-

**NEW! NATURAL SHADOW**

Natural Shadow: thick, wild, shape of a cylinder. It has a natural hair in it. For shadowing, bigger patterns. Use it for techniques with acrylic (not acrylic) and aquarell materials.



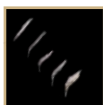
BRUSHES

SYNTHETIC LINER BRUSHES:

Especially developed for creating lines with artificial, thin hair in it.

S SIZE:

3 mm, very small, thin for short lines and small patterns.



M SIZE:

6 mm, for contouring, medium long lines. Also, you can use it for glue gels and applying rhinestones and mini beads.



L SIZE:

9 mm, for longer thicker straight lines.



NEW! SYNTHETIC ART:

Perfect for gel painting, creating petals and flowers and for shadowing. This is a small brush shaped as a cat tongue. It has a fine, soft, flexible and artificial hair. Use it for thicker nail art gels: Art Gel, Art Gel Pro.



NEW!

NEW! K-COLOR BRUSH

The perfect tool for lovers of coloured nail products, this soft, synthetic brush is sure to be a hot favourite for fans of the popular Gelly brush.

Developed for applying different coloured gels and creating different shades, the brush has a flat base for greater stability during use.

Its super fine thinness makes it super easy to use and great for detailed work, creating a smooth finish, while the precise, cat-tongue tip allows you to apply the product as precisely as possible around the cuticles. For an absolutely perfect, solid colour effect, you can't go wrong with this nifty brush



NEW!

**NEW! AQUATIC I. BRUSH**

This natural hair brush have been specially developed for watercolour painting. The Aquatic I brush is ideal for working with samples with a larger surface



NEW!

**NEW! AQUATIC II. BRUSH**

This natural hair brush have been specially developed for watercolour painting. The Aquatic 2 brush is ideal is perfect for small patterns and intricate detailing.



NEW!

**GELLY GEL BRUSH**

Synthetic gel brush. Thanks to its softer, longer and flat fur, it is easier to apply materials with special consistency like Gelly Cover Pink Gel. This brush is perfect for make the smile line. It is easier to process the material on the nail surface towards the cuticle thanks to its rounded sides. It is good with Royal Gels, but also perfect to cover color gels on the whole nail surface.

**NERO MERLO II.**

Soft, natural hair, excellent quality brush. The hair is a bit longer, than in 6 Gel brush. The precisely cut edge provides an accuratework. Due to its special form, it is an essential tool in the perfect, professional salon. Use with medium dense and softer materials such as Titanium Gel, Builder Gel I-II, Cover gels or pink builder gels.



BRUSHES

NERO MERLO III.

Natural hair, harder type, excellent quality. Short and wide head. The hair form and length is like in Firm Gel brush. The precisely cut edge provides an accurate work. Use with denser builder gels such as Xtreme Clear and Xtreme Pink.



XTREME GEL BRUSH

Synthetic hair gel builder brush with 1mm longer hair than in 6 Gel brush. Use with medium dense and softer materials such as Titanium Gel, Builder Clear I-II, Cover gels, pink builder gels or white gels.



6 GEL BRUSH

Synthetic hair gel builder brush with 1mm longer hair than in 6 Gel brush. Use with medium dense and softer materials such as Titanium Gel, Builder Clear I-II, Cover gels, pink builder gels or white gels.



4 GEL BRUSH

Small gel brush with synthetic hair. Use mainly for color materials but also for white builder gel.



FIRM GEL BRUSH

Small gel brush with synthetic hair. Use mainly for color materials but also for white builder gel.



XTREME (HARDER) BRUSH:

Acrylic Size 8, flat professional builder brush with natural hair for experienced acrylists. Made of harder, higher quality hair which has greater absorbency and compressive force.

**A8 ACRYLIC BRUSH:**

A size 8 acrylic builder with natural hair. Made of softer Size 8, flat professional builder brush hair. Also for less experienced acrylic users.

**A6 ACRYLIC BRUSH:**

A size 6 acrylic builder with natural hair. Due to its small size you can use it for color materials. Made of softer hair.

**LOOP PAINTING DECORATING JEWEL BRUSH**

Synthetic brush with soft hair at the tip specifically designed for color fading with gel. It is easy to paint the next motives like flower, butterfly, butterfly bow. It doesn't leave stripe on the material. You can make cambered patterns easily. It is good for soft and thick material as well.

**PHANTOM PAINTING DECORATION JEWEL BRUSH**

Gel nail art brush with natural hair. Therefore, it can be used for gel, acryl, aquarelle painting as well. Perfect for creating the color mash, because of its size and softness. Slightly bulkier than CN Art Design brush.



BRUSHES

ART DESIGN BRUSH

This thin, precise brush has a shortest and natural hair which is 5mm, (allows us to work with it easier). For contouring and precise painting. Good for water-based paints and gel painting as well.



BARBARA II. BRUSH

This short, precise, slight brush with natural and pointy (7,5mm) hair allows us much more control over itself. This brush strongly recommended for making very thin lines and contours. Use this for water based paints but you can use it for gel paintings as well.



OMBREPRO BRUSH

Synthetic, sparse brush with thinner hair at the tip specifically designed for color fading with gel. Due to the head's enhanced width it makes color fading a lot easier. By using tapping movements you can create a perfect ombre effect. These brushes are perfect for Royal Gels and gel polishes.



NERO MERLO 0 BRUSH

Natural soft hair with a round tip. The form and design provide precise work. For color materials, detailed painting and small surface. Due to its form it is easy to create the edges and gradients on the color gel's surface.



NERO MERLO I. BRUSH

Natural soft hair, high quality brush with round flat tip and an end which looks like cat's tongue. Cover the entire nail surface for fast color gel paint. Its natural hair and the precise sharp form on the side make it is easy to create the cuticle and the smile line as accurately as possible so it will not touch the skin.



BARBARA I. BRUSH

Synthetic hair and pointy peak. For decoration, small, precise artistic work. The 6,5mm hair provides easier control to create patterns and contouring.

**0 MINI BRUSH**

Synthetic hair brush which thinness allows a more stabile work, you can easily make thinner contour lines with it. The work is flexible with it, perfect for curved thinner lines. Length: 3 mm

**0 SHORT BRUSH**

Synthetic hair, very thin, for flexible gel decoration. The 6mm hair provides easier control to create gel patterns, smile lines and contouring. Less experience users may use another 0 short brush to paint contour lines with aquarelle.

**0 LONG BRUSH**

Synthetic hair, very thin, flexible gel decoration brush. With 9mm hair. For creating gel patterns and smile lines.



BRUSHES

ONE MOVE I+ BRUSH

With synthetic hair, especially designed for the one move technique. Bigger size with asymmetrical hair. Length of the edge: 4,5mm



ONE MOVE II+ BRUSH

With synthetic hair, especially designed for the one move technique. Smaller size with asymmetrical hair. Length of the edge: 3mm.



ONE MOVE IV+ BRUSH

Synthetic hair brush, which designed for one movement technique. A real essential product, with improved mini sized hair and edgy ending for the more precise work. Length of the edge: 2mm. It is perfect for small patterns or small nails.



Nude nail with Nova Crystals

The nail in the picture is made with
Xtreme Superior Cover Pink, and for
the decoration, **Nova Crystals** have
been used by Doviscsák Dóra

GEL 4 BRUSH

Synthetic hair, small size, straight edge, flat gel brush.

**GEL 6 BRUSH**

Medium sizes, synthetic hair, straight edge, flat gel brush.

**3D GEL BRUSH**

Synthetic hair, rounded edge, flat gel brush. Especially for 3D gels.

**ACRYLIC 6 BRUSH**

Natural hair, small size. Acrylic builder brush.

**ACRYLIC 8 BRUSH**

Natural hair, soft, medium size acrylic builder brush.

**SHORT HAIRED DECORATING BRUSH**

With thin natural hair and pointy end for nail art.



BRUSHES

SILICONE RHINESTONES BRUSH KIT (3PCS)

Silicone brushes with sparkling rhinestones with inside of them. These brushes are developed specifically for Lace gels. The silicone heads 5 different tops.



CN advise:
It is perfect for applying ChroMirror pigment powders as well!

SPONGE OMBRE STICK

Replaceable sponges on both ends. Comes equipped with four sponges you can buy separately. Perfect for creating beautiful color gradients on any base coat with Art Gel and Royal Cream Gel and for Baby Boomer gel polishing with Cover Pink Base Gel and White Art Gel as it marvelously blends Art Gel.



ADDITIONAL SPONGE HEADS FOR OMBRE STICK



BRUSH CLEANSER GEL 8ML

Developed especially for cleaning gel brushes, but thanks to the thin and watery consistency of the product, it can easily remove pigments, glitters, sparkles, and other contaminants from the brush too. This handy, practical pipette helps give you the flexibility to use as much or as little as you need.

CRYSTAL NAILS ORANGE BRUSH CLEANER

For the most permanent decor brushes

A highly effective cleaner tool to extend the lifetime of your brushes. If you wash your acrylic or aquarelle brushes with this cleaner, their hair will fall out only much later. This liquid dissolves the dried substance from the brush. You will see, your brushes will last longer!

Happy colors

The nail on the picture is made with **R186**, **R187**, **R188** and **Royal Gel**
(The nails is made by Dóra Kesztyűs)



With a nice orange scent!

Made in Germany!



CN advise:

After using a transferfoil glue or the Chro°Me CrystaLac, clean your brushes with the Crystal Nails Orange Brush Cleaner and prevent the hair became sticky



PORTABLE BRUSH HOLDER WITH HARD COVER

Its specialty that you can store your brushes on both sides. You can separate your acrylic and gel brushes, or the builder and nail art brushes. With embroidered silver Crystal Nails logo.



BRUSH HOLDER



BRUSH HOLDER - HARD COVER

Hard cover, portable, propped out, nice and useful brush case envied by many.



Keep your brushes close by you and organized!



BIG BRUSH BRUSH KIT

12pcs of synthetic haired decorating brush. The kit contains: sidelong, flat brush (mini, small and big brushes) straight flat brushes (medium and big) nail art brushes (mini, short and medium) cat-tongue brush (medium) fan brush long hair brush and „extra” pointing brush



You can find a brush for almost every linethickness and pattern. Synthetic brushes in proper shape all of them in one kit.

Crystal brushes, with fine quality hairs for beginners. Pretty looks, low prices.



Mainly for gel decorations.

BRUSH HOLDER

Practical holder for builder and decoration brushes, so you will always easily reach the brushes you need and keep them together. For five brushes, in 2 colors



CLASSICAL TIPS

FOR XTREME FUSION ACRYLGEL REVERSE - CLEAR ALMOND TIP

Transparent, more flexible tips in 12 sizes for Xtreme Fusion AcrylGel. There are a total of 140 pieces in one box. You can use a tip more than once! The tips have an ideal, more natural-looking curve.



NEW! FOR XTREME FUSION ACRYLGEL - CLEAR TIP

Transparent, more flexible tips in 12 sizes. You can use a tip more than once! The tips have an ideal, more natural-looking curve.



NATURAL / STRAIGHT (CLASSIC)



CLEAR



DISPLAY TIPS - COVER PINK OVAL

Ideal shape and size tips for practicing decoration painting. Thanks for the cover pink color, There are 50 pieces same sized tips in one box doesn't requires any base color.



DISPLAY STILETTO TIPS

For practicing, showing samples for guests or for your portfolio. Curved Stiletto in size 1-2, in matte white and transparent colors. There are 50 pieces in one box.



CLASSICAL TIPS / NAIL GLUES

DISPLAY TIPS - COVER PINK OVAL

Ideal shape and size tips for practicing.

Thanks for the cover pink color, doesn't requires any base color.



BRUSH GEL TIP GLUE

Extreme strong glue with brush. Thanks to the brush you can work with it easily and you can put the right amount to the surface.



BRUSH TIP GLUE

Super strong, extra quick glue with brush. You can work very accurately with its special brush.



NAIL GLUE

Beaked tip glue, superstrong.



Crystal
Nails®

FORMS & METAL TOOLS



Developed specifically for flawless nail form application. Hard material holds any pearl white angle perfectly, yet it is easy to shape. This longer version of our WonderForm especially developed for extreme nails and competition. Thanks to its unique layering, it holds its shape like a rock and provides strong adhesion. Easy to cut despite the thicker material. Thanks to its almond-shaped dent, it is easier to adjust to the arc of the natural nail. Cutting it at the stress points is not necessarily required, it is more than enough to push it under the nail on account of its superb strength and its ability to push down the skin at the stress points (which is a huge plus when dealing with deep stress points).

WONDERFORM

Holds any angles perfectly, provide strong adhesion. Size: 3cm

30 pcs
200 pcs

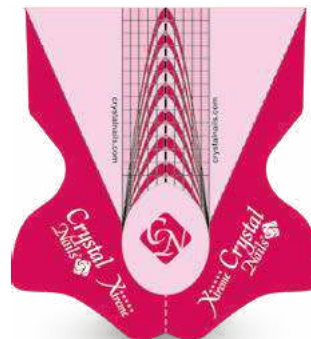


CRYSTAL FORMS

WONDERFORM LONGPRO

For extreme long nails and competitions.

30 pcs
200 pcs



♥ Easier to adjust to the arc of the natural nail thanks to its almond shaped dent!

♥ CN advise: you can easily shaping these forms in rubber gloves as well!



CRYSTAL NAILS SABLON

Unique quality, strong adhesion, optimal curve and clear, visible scale. Ideal for salon work, and for sculpting salon nails with natural length. Size: 38x56 mm, free edge length 21 mm.

50 pcs
500 pcs



XTREME BUTTERFLY FORM

Unique quality, strong adhesion, optimal curve and clear, visible scale. The most popular Crystal form. Ideal for salon work, and for sculpting salon nails with natural length and also for longer, extreme shapes. Size: 60x60 mm.

30 pcs
300 pcs



Made in USA!
– extraordinary quality



Form of the olympic champions



CRYSTAL FORM BENDING TOOLS

PREMIUM C-CURVE KIT

This tool holds the bent shape for the curing time. Thanks to the transparency, the UV light can go through.

The kit contains: 5pcs of different sizes of C-curving sticks with diamond dust on the top



C-CURVE TWEEZERS



SHAPE X C-CURVE TWEEZERS



C-CURVE HOLDER - CLEAR

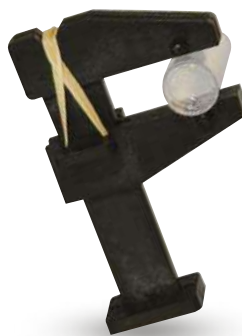
This products can help you holding the c-curve during the curing.

Because of the transparency, it lets through the UV light.



C-CURVE HOLDER - BLACK

It could be a problem if the sculpted nail wouldn't want to hold their shapes for its own. That's why this product is a big help for us: holds the sculpted nail to the curve what we want to achieve.



C-CURVE HOLDING CLIP

If you would like to the nail has a nice arch, you have to bend it. This product will help create a nice, c-urved shape.



PROFESSIONAL SCISSORS, STAINLESS STEEL - EXCLUSIVE QUALITY FOR PROFESSIONALS

XTREME ERGOSHARP II.

The ErgoSharp scissors family's newest member is the shorter ERGOSHARP II which favors those who prefer to work with smaller scissors besides the precise work. Extremely durable, corrosion resistant, stainless steel scissors which helps the precise salonwork. The narrow blades allow us the better reach of the cuticle without hurting the skin or nail plate.

The length of the cutting edge is: 18mm



SOLINGEN SCISSORS - CHROMIUM STEEL. TRADITION AND QUALITY.

MANICURE AND CUTICLE SCISSORS - SOLINGEN



MANICURE SCISSORS - SOLINGEN



JAPANESE STEEL SCISSORS

JAPANESE QUALITY, WITH LONG LASTING CUTTING EDGES

PROFESSIONAL CUTICLE SCISSORS



Also for form
shaping/cutting!

NAIL SCISSORS - JAPANESE STEEL



GOLDEN SCISSORS CUTICLE SCISSORS - JAPANESE STEEL



PROFESSIONAL NAIL SCISSORS



UNIVERSAL NAIL SCISSORS - JAPANESE STEEL



CN NAIL SCISSORS STAINLESS STEEL



PROFESSIONAL METAL TOOLS FOR PEDICURE AND MANICURE

XTREME CUTICLE PUSHER

Extremely durable, stainless steel cuticle pusher. Its special body and rounded head help the more precise manicure. Edges are evenly thin that's why it is perfectly pushing the cuticle. The other scraper end allows us to remove the stuck thin skin. This tool is recommended for modern techniques.



PROFESSIONAL CUTICLE PUSHER AND SCRAPER



CUTICLE PUSHER-SCRAPER FOR MANICURE

Manicure metal tools in gold and silver colors.

Big



CUTICLE PUSHER-SCRAPER FOR MANICURE

Manicure metal tools in gold and silver colors.

Small



CUTICLE AND FINGERNAIL CLIPPER



CRYSTAL DECORATING NEEDLE



for small dots

for big dots

RHINESTONE PICKING TWEEZERS



FLEXI MIXING SPATULA

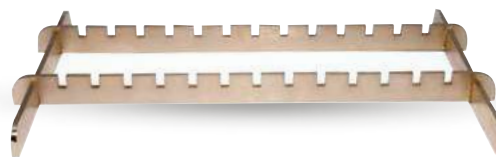


NAIL CLIPPERS

Nail clipper for natural nails or shortening artificial nails. Especially useful for extreme shapes and nails that does not fit in the tipcutter. With a practical case that collects the nail bits.



STAINLESS STEEL STAND FOR TOOLS



FLEX CUTICLE AND FORM SCISSORS

Interesting mechanism: the springy handles open the scissors for us thus they are easy to control when cutting cuticle or forms.



PROFESSIONAL METAL TOOLS FOR PEDICURE AND MANICURE

TIP CUTTER TIP CUTTER

Light tip-cutter with a curved head and edge.
With its curved edge it will not flatten the tip.



BARREL SPRING FINGERNAIL CLIPPER

Big



CUTICLE PUSHER



BRAUN PEDICURE BLADES

Sterile steel blade
Size: 20-23



DOUBLE-ENDED PEDICURE FILE

This new product is for cleaning healthy and overgrown nails and the cuticles around the nail.



EXKAVATOR

A tool which makes the pedi technician's job so much more! Use it for cleaning the nail grooves, ingrown nails treatment and cleaning.



PROFESSIONAL TOOLS

SOFTENED WIPES

The new version of the multi-layer paper wipes. Better pressing for a more precise work, smoother surface.

500 pcs



You can also use the box as a dispenser!



SOFT NAIL WIPES 100 PCS

Folded 5x5 cm pcs.



LINT-FREE NAIL WIPES

3-4 fingers/pc



NAIL WRAP REMOVER FOIL

The cotton pad is inside an aluminum cover which is bigger than the nail (2x3cm) and needs to soak with Acryl Remover.

Already shaped specifically to soak-off acrylic, CrystaLac, or Easy off.

100 pcs



CLEANSER PAD - LINT-FREE PADS SOAK IN CLEANSER

Lint-free pads soaked in Cleanser. Facilitates faster salon work. Perfect for on-the-road nail techs, provides a 2-in-1 alternative for cleanser and lint-free towels. A single Cleanser Pad – depending on nail length – is enough for cleansing 5-10 nails.



THREAD GLOVES

The elastic fingertips ensures a better grip. The textile part ensures the perfect ventilation so they are more comfortable than the rubber gloves.



Crystal
Nails®

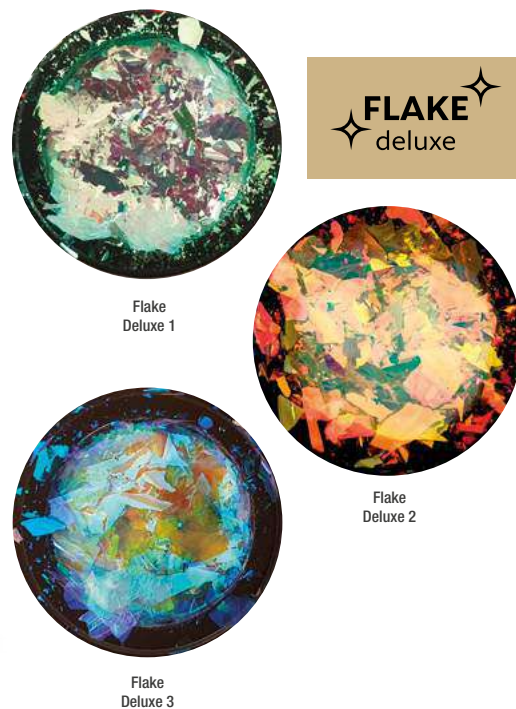
NAIL ART

NAIL ART

BRAND NEW! SENS FLAKE DELUXE

The SENS product range is enriched with new nail art products.

The SENS by Crystal Nails Deluxe Flakes stands out amongst our spring novelties like a piece of postmodern art. It gives a brighter surface than ever before and contains large flakes. These decoration flakes are available in 3 breathtaking colors and you can make several extra effects depending on what color base you use. It comes in a unique jar and thanks to the flakes it shines brightly to have a luxurious look. Apply them on a non-fully cured, non-cleansing top gel's surface to achieve the mirror effect. It can also be used by rubbing into a sticky surface which will create a paler, opal-like effect as result. The edges have to be filed after applying it to the nail surface and it is worth using the Acid-free primer. Then apply 1-2 layers of top gel for the proper closing of the edges.



LOVE DECORATION GLITTERS

Our brand new decorations are mix of the popular colors fall-winter in a nice and elegant black jar. Create a beautiful decorations on your customers' nail with these magnificent thin heart shaped glitters, which can turn every manicure exciting. We have 2pieces in this season: Sweetheart and Storm. CN advise: apply these glitters as a build-in decorations, us them with the new Elastic Hardener Gel.



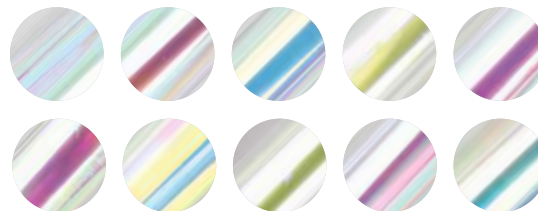
"Sweetheart" nail with Love Decoration Glitters

This stunning nail was designed using 3S157 and 3S149 CrystalLacs and decorated with Sweetheart Love Decoration Glitters. It was created by Kovács Nikolett.



AURORA GLASS FOIL SET

One of the biggest trend of this year's summer, the Aurora-effect glass foil kit, has arrived. Aurora glass foils are thinner, thus they rest better on the nail surface and are easier to handle and shape. The box contains 5 colors, two rolls of each color. The size of the rolls is 2.5x100cm. Glass foils are in an eye-catching box just like transfer foils, and you can use this box for organize your other nail art products after the foils have ran out. It is recommended to cut the foils into small pieces and build them into a layer of clear gel, then cover with another clear layer. After curing, carefully shape the nail with file if necessary, because it can be easily break the foil. It is recommended to apply it with a file-free technique. CN advise: Cut the foils into pieces and store them that way. For special effects, cover it with Aurora ChroMirror or try the Mattever Matte Top Gel.



SNOW DECORATION FLAKE

Make unique winter nails with the new Snow Flakes with the help of tiny decorative sequins. Hexagon and round white shapes, which can transform a simple nail to a festive splendor. CN advise: Also suitable for built nail and gel polish decoration. Tap it into a sticky layer or mix with Clear Compact Base Gel and apply it to the nail surface.



GLAM SELECTION

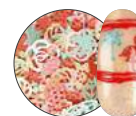
There are hundreds of different shapes and themes in a selection you can use well in the spring-summer months. If it does not fit the nail surface just bend them. If you fix it to Gem Glue Gel or Compact Base Gel you will get a lasting color and if you use a thin layer of highshine the result will be durable as well.



Glam Selection 1
Silver



Glam Selection 2
Rosegold



Glam Selection 3
Tropical



DIVA GLITTERS

This is our new shining member of our decoration tools. The Diva Glitters are merging the glitters and sparkles in a new, metallic way. This product will shine on your clients' nail and make them Divas.



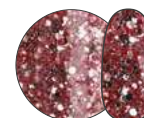
1 Fehér ezüst



2 Rosegold



3 Baby pink



4 Rózsaezüst



CN Advise: dab them into a sticky layer or mix them up with Compact Base Gel Clear and apply to the surface. You cannot get enough of sparkling!

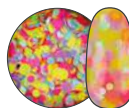
NAIL ART

NAILFETTI - DECORATION GLITTERS

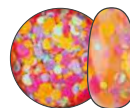
Round, the size and colors are mixed and random. You can use on any sticky (non cleansed) surface: be a gel polish or sculpted nail.



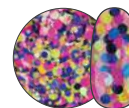
Nailfetti 1



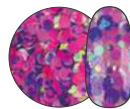
Nailfetti 3



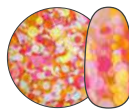
Nailfetti 4



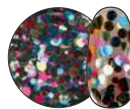
Nailfetti 5



Nailfetti 6



Nailfetti 7



Nailfetti 8

Nailfetti 10
Rainbow Clear

3D NAIL DECORATION GLITTER

One of the top hits of the summer and it has 3D shape! Exciting iridescent Violet and Peach version of colors! Use this way: apply a thin layer of thick clear gel (Compact Base Gel, Gem Glue Gel) and place the glitters in a way you want. Cure it, and cover it and make sure that the edges of the glitters blend in properly and the surface of the top gel is smooth enough.



Violet



Peach



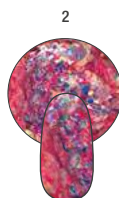
GLAM GLITTERS

Our Glam collection has a holo effect now as well! Get the new sparkling glitter and powder decorations, and make your customer's nails sparkingly colorful!

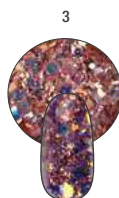
CN advise: mix it with Compact Base Gel, and apply on the surface of the nail that way!



1



2



3



4



5



6



7



8



9



10



11



12



13



14



15



NÉPSZERŰ

Sparkling Ombre Nails with Glam Glitters

This stunning nail was made using 3S150 CrystaLac, Art Gel and the Glam Glitters 13. The nail was made by Dövicsák Dóra.



CHROMIRROR PIGMENT POWDERS

Breathtaking chrome pigment powders are still on the top of the A-list! The use of the ChroMirror Chrome Pigment Powders is easy: apply the powder onto a non-cleansing, sticky surface – Royal Ge I, 1S/3S CrystaLac, 0/clear ONE STEP CrystaLac, Super Shine Optic and Xtreme Top Shine – cure 80% of the full time, rub it nice and shiny, file the free edges, cover it with Acid Free Primer, then close the free edges and cover it with flexible top gel (Cool Top 4 Dark, Cool Top Gel Universal, Top Seal Gel, Top Seal Light).

Aurora Pink



Pink



Superholo Pink



Aurora



Gold



Silver



Fine Silver



Galaxy Holo



Super Holo



Rose Gold



White Pearl



Fine Aurora



Fine Aurora Aqua



Fine Aurora Sun



Ultraholo



Pearlescent light effect with Chromirror Pigment Powder.

The nail on the image was made using 3S66 CrystaLac and the White Pearl Chromirror Pigment Powder. The nail was made by Doviccsák Dóra.



NAIL ART

TIN FOILS – GOLD, SILVER, ANTIQUE

Decorate your customers nails with our new super thin “smoke foils”. We have 3 colors: gold, silver, antique. It was developed for very fine nail art or marble patterns. You can use this product 2 different ways, depends on what effect do you want to reach: • If you would like to use it flat design, you don't need extra amount of clear material, it's enough to apply it on a smooth not fully or a fully cured surface of any gel or CrystaLac, cover it with Cool Top Gel Universal or Mattever Top Gel. • In case of a 3D decor, use extra layer of gel and apply the previously wrinkled foil on the surface with a StickerUp Tweezer and cover it with Cool Top Gel Universal or Mattever Top Gel.



Gold



Antique



Silver



CRYSTAL FLAKE

Extremely reflective flake. Apply on a non-cleansing, sticky surface, cover it with Acid Free Primer, then cover it and close the free edges with Cool Top Gel Universal. You can built in the nail as well: in case of acrylic, after you pick the acrylic with your brush, dap it into the jar of the flake and then you can apply to the nail. In case of builder gel, mix the gel and the flake and then apply it to the nail.



1



2



3



4



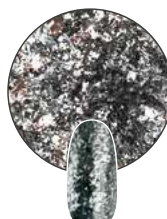
5

PLATINUM FOIL

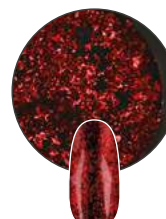
It has smaller pieces than Crystal Flake. Using different methods, you can achieve different results with this product. If you apply it on a non-cleansed, sticky surface, you can achieve a foil-effect, but if you apply it on a non-cleansing, smooth surface, you can get a chrome-effect. We have 4 fabulous colors!



Platinum Foil 1



Platinum Foil 2



Platinum Foil 3



Platinum Foil 4



CRYSTAL MERMAID POWDERS

Spring Sparkle: cheer your customers up with longlasting shine! No one can look away from their nails if you use it.



1



2



3



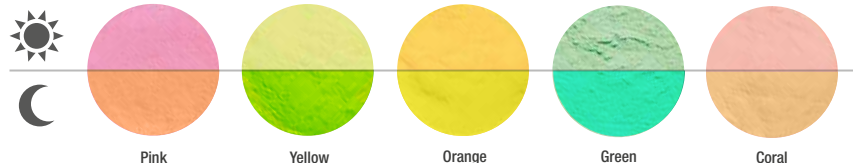
4



5

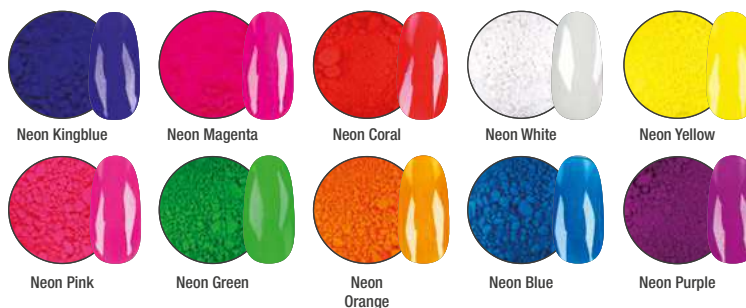
NEW! GLOW PIGMENT POWDERS

The most popular pigment powders now in neonpastel shades. Vivid, but soft with strong coverage. It is perfect for the ombre and sugar effect techniques. At daylight and night, it has a luminescent effect. Dab it into a sticky surface, depends on what kind of decorations you want to prepare



NEON PIGMENT POWDERS

These powders are the perfect choice for ColorVortex (smokey-effect), ombre and marble techniques. They have so vivid shades, you could actually go insane!



NAIL ART

XTREME TRANSFERFOILS - EASIER TO PEEL OFF, BRIGHT COLORS

Extra thin and very special foils with the best adhesion ever! They stick perfectly so foil technique has never been so easy. The new foils are good for covering even the whole surface of the nail without any gap between them. By making thin patterns we can create jewel - like embossed decorations combining it with foil gel. Available in amazing colors. Length: 25 cm.



CN Advise:

It is important what top gel is applied to the nails decorated with foil, because some top gels may etch the glossy surface of the foil. Choose from the following top gels depending on the base: Top Seal Light is the best and a soak-off alternative is the 0 Clear / Top CrystaLac, Easy Off Top Gel, Cool Top Gel.



TRANSFERFOIL KIT - RAINBOW

Cheer up your mood with our new Rainbow Transferfoil Kit! 10 different shades of foils. It will be the most popular nail art product with its silver, rosegold, gold, pink, etc. colors. Use the Pro Foil Gel to apply on any surface.



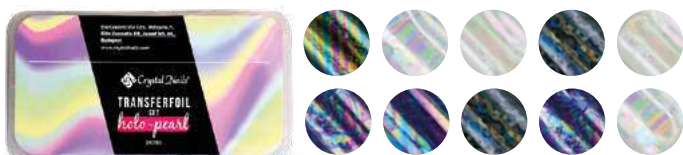
TRANSFERFOIL SET - MARBLE

The adorable transfer foil set is expanded with another impressive selection. One of the most popular decorations for guests is the marble pattern, which you can now create easily, even in a matter of seconds. Popular in different shades and patterns with the help of the 10-foil Transfer Foil set. It is guaranteed to be one of the favorite nail art products of autumn! It can be easily applied with Pro Foil Gel to any surface.



TRANSFERFOIL SET - HOLO-PEARL

Transferfoil with pearl effect collection what you can apply on almost every surface with the Pro Foil Gel. It contains marvel, glitter, star shaped foils and these could be used for the holiday season perfectly.



TRANSFERFOIL KIT - HOLO-OMBRE

Are you crazy about transferfoils too? Then we have a good news for you! Our new selection of holo and ombre effects are waiting just for you! It can be applied to any surface easily with Pro Foil Gel. This kit contains different and colorful transferfoils in cheerful spring shades. Leave the melancholy and be fabulous with the new Holo-Ombre Transferfoils!



PRO FOIL GEL CLEAR

This is a transparent gel for transferfoils and thanks to the density it can be easily used to make more convex patterns. You don't have to count the seconds during the curing, thanks to the excellent adhesion. When creating a pattern, there is no problem if one part of the line is convex and the other is flat. Cures and adheres equally. Use as pattern for Xtreme metallic foils or even for a complete surface. Because of the transparency it will not stand out anywhere on the edges or in hard-to-reach areas. If you work with non-cleansing colors, use Pro Foil Gel and make foil decoration on the nails!



XTREME TRANSFERFOIL GEL - ADVANCED FORMULA

Thick, easy-to-use, easy-to-shape. It cures equally in UV or LED lamp in 10-30sec (depends on the quality of the bulbs). Easy to use: get a thin brush (e.g 0 short or 0 Long brush) paint a pattern what you want, cure it for between 10-30sec. After that push the bottom of the foil strong against the nail, then with a firm move, remove it fast from the surface and you're done!



♥ CN ADVISE:

The cure time is depends on the type and quality of the UV/ LED lamp and how thick is the layer of the foil gel. Experiment a little before using it with a customer!

NAIL ART

NAIL STICKERS

If you don't have time a proper nail art, use these stickers instead and make your customer's nail funny and goofy stickers.

♥ LIMITED



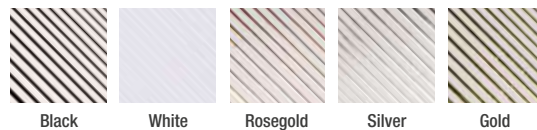
STICKERUP TWEEZER

Sticker pick up tweezer with a silicone head at the end to help put the sticker on the nail and to squeeze the air from underneath.



MAGIC STRIPES STICKER – GOLD, SILVER, ROSEGOLD, BLACK, WHITE

Unleash your creativity and make metal decorated nails easily with the new Magic Stripes stickers. Easily bendable stickers. Besides the 2 basic colors (black, white), there are 3 other, holiday colors (rosegold, silver, gold).



**Decorate with
stickers in a few
moments!**

The nail was made with 3S165, 3SC1 and 3SC3
CrystalLac reasons and stickers by Dóra Kesztyűs.



NOVA CRYSTALS GEMS

The rhinestones of the NOVA Crystal product family have arrived in our autumn novelties in the most popular shapes and colors. We recommend for the application of this flat-bottomed stones use tip glue or Gem Glue Gel, cure the latter in a UV lamp for 2-3 minutes, 1-minutes in an LED! To keep it from protruding from the plane, you should file the surface of the nail a little flatter (but not filing the C-arc) so the rhinestone lies better on it.



Brick Aurora
Dimensions: 4x6mm



Wheat grain Aurora
Dimensions: 3.4x8mm



Diamond-shaped Aurora
Dimensions: 5mm



Wheat grain Crystal AB
Dimensions: 3.4x8mm



Rhombus Crystal
Dimensions: 3x5mm



Rhombus Crystal AB
Dimensions: 3x5mm



Rhombus Aurora
Dimensions: 3x5mm



Drops of Crystal
Dimensions: 5x3mm



Drops Crystal AB
Dimensions: 5x3mm



Drops of Aurora
Dimensions: 5x3mm



Drops of Crystal
Dimensions: 2x6mm



Drops Crystal AB
Dimensions: 2x6mm



Drops of Aurora
Dimensions: 2x6mm

Strassz-szerelem a Nova Crystals Gems kövekkel

A képen látható köröm az 15108-as CrystaLac-
okkal és Nova Crystals Gems formakövekkel
készült (Sebestyén Ágnes munkája).



NAIL ART

CRYSTAL NAILS NOVA RHINESTONES

NOVA CRYSTAL COLOR-CHANGING GLASS RHINESTONES WHICH YOU WILL ABLE TO APPLY WITH GLUE GEL OR TIP GLUE.

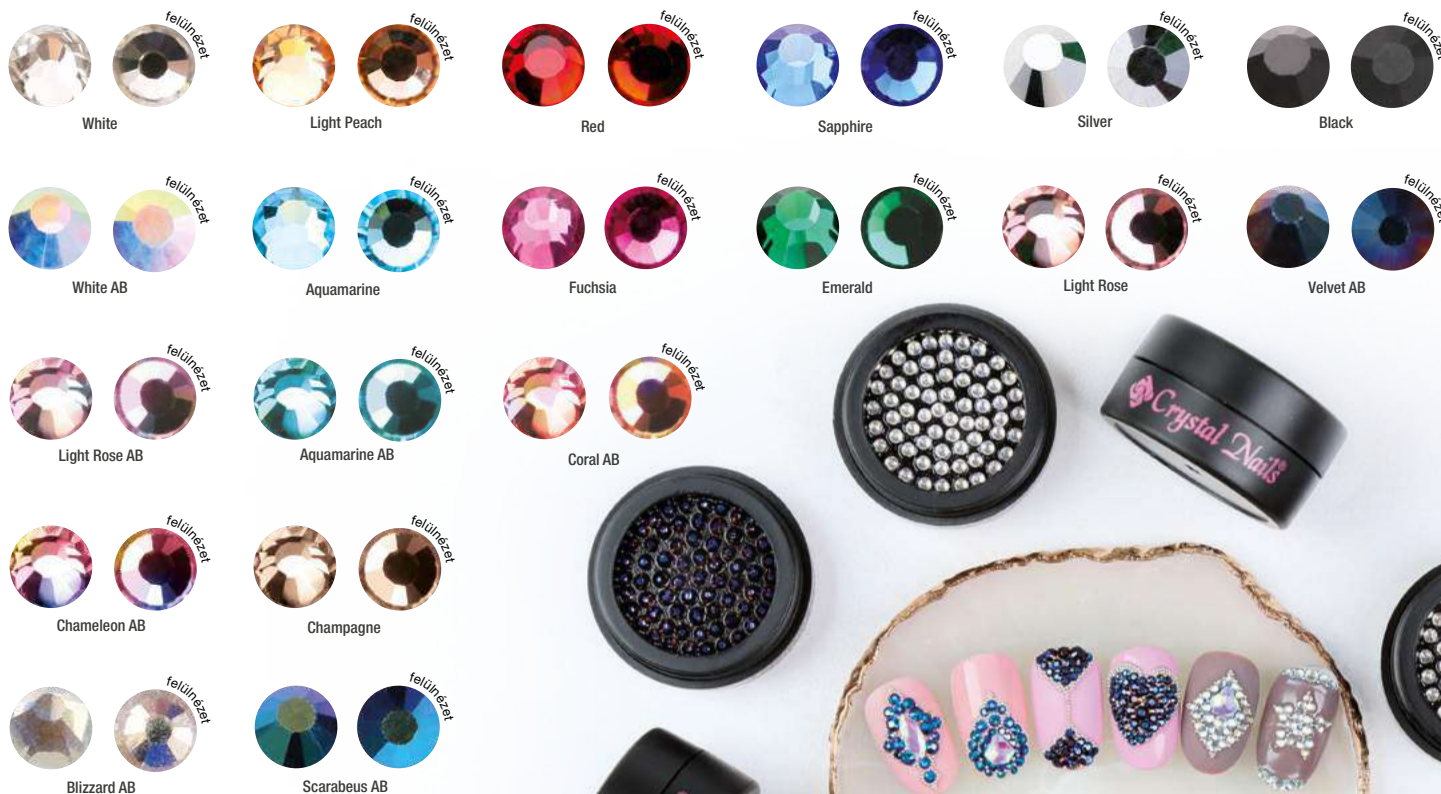
You will find 100 rhinestones in the elegant black jar. For the application of flat-bottomed stones, we recommend tip glue or Gem Glue Gel, cure the latter in a UV lamp for 2-3 minutes, in an LED for 1-2 minutes! To keep it from protruding from the plane, you should file the surface of the nail a little flatter (but not filing the C-curve) so the rhinestone lies better on it. Available in a total of 12 colors, 3 sizes per color (SS3, SS5, SS8).

1 jar=100 rhinestones SIZES: (There is one size in one jar.)



CN Advise: Contour the contiguous patterns (where many rhinestones come together) with top gel by a 0 Short brush for more lasting results.

NOVA CRYSTALS



NAIL ART

GEM GLUE GEL – soak-off glue gel for gluing the stones

Perfect consistence, easy-to-use, soak-off, cleansing glue gel. The stones, beads are not slipping away. It needs to be cured in UV/LED lamp, and the surface will be shiny when it cured.

Cure time

UV: 2-3min

LED: 1-2min



The stones
are not slipping
away



OPAL RHINESTONE IN MIXED SIZE - WHITE, PINK, BLUE

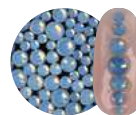
This milk-ish sparkling collection will be your companions even at the winter season. Create a cool Snow Queen style nails and make your customer trendy for every season. It comes with an elegant black jar, in different sizes: 40 pcs SS5, 30pcs SS8, 20pcs SS12, 10pcs SS16.



White



Pink



Blue



SMALL METAL BEADS

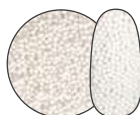
Durable small, metal beads (except the white, but the durability is the same). The diameter of them is approx. 0.6mm. The specialty of these beads that they are not just colored on the surface: the whole bead has the color what you can see. So basically the material has that color, so this way the color of this product will not fade, not even several weeks after the nail was made. If you would like to reach the maximum durability, use Gem Glue Gel, Compact Base Gel or Cool Top Gel Universal for a base material.



Silver



Rosegold



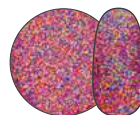
White



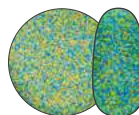
Onyx

CRYSTAL SUGAR POWDER

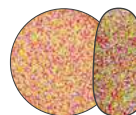
It's like sugar! Small random shaped particles, for Sugar-effect techniques. You can reach a special kind of sugar-effect if you use this product for the whole surface of the nail: it will look like if your customer would dip their nail into sugar. Apply it to a sticky layer and then cure it.



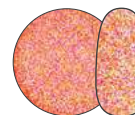
1



2



3



4



5



6



7



8



Sugar effect technique

The nail was made with the 3S132 CrystaLac and the 1# Sugarpowder by Roxána Sárközy-Eigner.



NAIL ART

FLASH

FLASH NEW! FLASH GLITTERS

AMAZING, SPECIAL, NEVER-BEFORE-SEEN GLITTER!

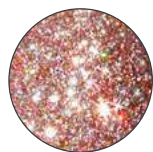
This magnificent light-reflecting sparkling powder is flashing under natural light, as the slightly shimmering surface of the water reflects the sunlight. But the most important feature is, you don't necessarily need the bright light to admire this amazing sparkle: this fascinating product can reflect the minimum amount of any light, so you can enjoy the shining when it's not too sunny as well. We recommend you to use it with the Sugar Effect technique for reach more magical results, also we suggest to use the following gels for a base to this impressive sparkling powder: Gem Glue Gel, Compact Base Gel Clear, Cool Top Universal or Cool Top 4Dark. Apply one of these gels on the surface of the nail, and without curing, sprinkle the powder onto the material and cure it. You don't need a top gel for this product. We have 4 popular colors: Silver, Rosegold, Pink, Turquoise



Flash Glitters 1



Flash Glitters 2



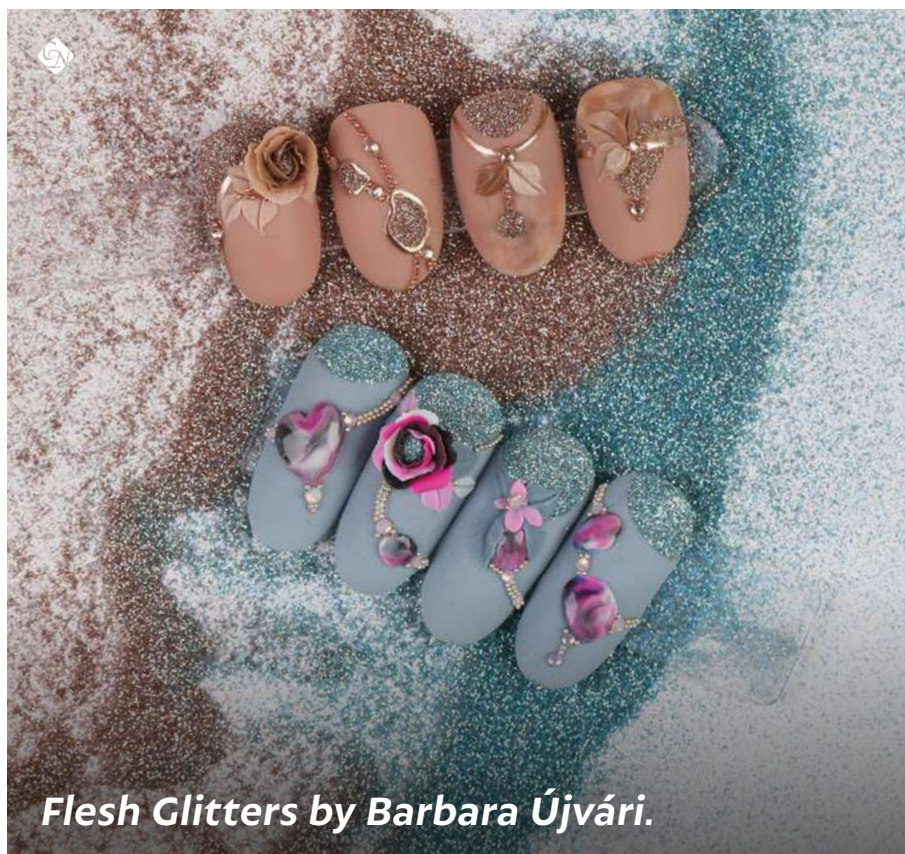
Flash Glitters 3



Flash Glitters 4



CN Advise: You can take amazing photos with your phone's flash.



Flesh Glitters by Barbara Újvári.



Flash Glitters - amazin shine

The nail was made with the Xterme Fusion AcrylGel Cover Pink, Compact Base Gel Clear, rosegold and turquoise Flash Glitters with sugar effect technique by Edina Sikari.

SWAROVSKI PIXIE SHADES - SWAROVSKI SPRAY CRYSTALS

The Crystal Pixie family is expanded with new shades. With the very tiny, delicate Swarovski crystals, you can create spectacular and shiny surfaces. You can even use it on the entire nail surface! Fix them with Gem Glue Gel.



FUN & FORM GEL

Specifically designed for stones. Non cleansing, clear, soft decoration gel in a practical tube. From the tube it can be easily pressed into the silicone mold to work faster and cleaner. The soft texture of the product makes easy to blend in any decorative element. After printing out of the silicone mold, its surface is smooth and shiny. It's not recommended to cover it because loses its edges.

Cure time:

LED: 1-2min

UV: 2-3min



AQUARELL PALETTE

12 pcs - Essential Create unique designs with the new generation of Aquarell Palette! This version of the product is easier to handle and work with. You can find 12 magical, vivid colors. They're not fading, you can create transitions and wiped decorations with it. This art paint is water based, which means it dries on air, you don't have to cure it. Important: always work with this on an extra smooth matte surface (Cool Top Gel Universal 20-30 sec cure time, and matte it with fine buffer)! After you're done, cover it with Cool Top Gel Universal. Use a brush with natural hair, i.g. Aquatic I. and Aquatic II.



NAIL ART

UNIQUE CRYSTAL NAILS STAMPING PLATES

Unique and special, and they covering the whole surface of the nail.



Fallen Leaves



Tropical



Abstract



Lace



Textures



Floral



Polygons



Paradise



Mandala



Renaissance



Botanic

STAMPING LACQUER

Nail polishes especially developed for stamping. They dry quickly and cover perfectly. The consistency is more thick, more pigmented polishes developed for the application of the nail stamp patterns: with them, even the smallest pattern can be applied, as it flows into the gaps of the plate.

4ml

♥ **CN advise:**
Use Skin Guard
on the skin
around the nail!

♥ **CN advise:**
use these
polishes with
the Crystal Nails
Stamping Plates!



White



Black



Pink



Red



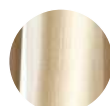
Burgundy



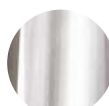
Blue



Chrome Rosegold



Chrome Gold



Chrome Ezüst



Chrome Pink



LINT ROLLER KIT - FOR STAMPING TECHNIQUE

Practical Roller kit for cleaning the surface of the Stamp itself. If you cleaning the surface of the Stamp with any kind of liquid, the material of the product could lose the ability to picking up the lacqers from the plate. Using this, you could avoid that unfortunate issue.

The kit contains: 1 roll and 1 spare roll-head



SKIN GUARD LIQUID SKIN PROTECTION LIQUID

Skin Guard Liquid Skin Protection Liquid, peel off skin protector material, which protects the fingers against the nail polish or gels. It can be very useful in case of nail art. Easy to use: apply it around the nail, let it dry (the time of the drying could be different, depends on how thick is the layer and the temperature of the room). Make the decoration on the nail, and then peel off the product of your finger. 8ml



ARTLAC-WATERBASED COLORS

From now on the Crystal Nails quality polishes are available in a decor edition: traditional lacquer are available in a water based version as well. There are slim, needle-sharp, super precision brushes for these technique, which are suitable for draw any kind of decoration or pattern.

3ml



CRYSTAL NAILS STAMPING PLATE ALBUM - BLACK

For 6*12cm plates. Also you can use for holding your stickers as well.



CLEAR STAMP



BIG STAMP, CLEAR

The diameter of this silicone product is 3,5cm. Thanks to the clear material, it's easier to apply the pattern to the nail. Recommended for longer nails and bigger patterns.



CARD FOR STAMPING TECHNIQUE



BIG STAMP, CLEAR - SPARE PILLOW

The diameter of this clear silicone product is 3,5cm.



STAMPING PLATE KIT, PURPLE



NAIL STAMPING PLATE CLEANER LIQUID

Nail stamping plate cleaner liquid removes stamping lacquer from your nail stamping plates. Gentle, does not damage nail stamping plates. Comes in a spray bottle for convenient use. Lemon scented. 100ml



NAIL ART

SENS SKETCH PEN

0.03-thin black felt needle that can be used to sketch patterns for gel polish painting, or to complement and make the nail design stand out and unique. If you find it difficult to draw with gel, the felt needle offers you a “stress-free” solution, as it is always easier to draw lines rather than paint. This makes creating the design enjoyable and fun. The felt needle will give you even lines thickness when you draw, so the lines will be spotless and evenly overlapping. Use a shiny top coat eg. Cool Top, cure then buff the surface with a 180 buffer to take off the shine, cleanse, use the pen to create your design, then apply a shiny top coat. It is not recommended to use a matte gel top coat straight after using the pen so it avoids dragging the pen design because of the consistency of the matte top coat. Applying a lighter, shiny top coat first, then a matte top coat would work best if you would like a matte effect at the end. We recommend SENS Top Gel to cover it.



SENS NAIL ART PEN

Nail art needle pen for sharp lines and unique designs

This product is 0.03mm thin, black nail art needle pen which can help you prepare the patterns you want to draw on the nail as a decoration; or it can make the already decorated nail surface more unique. This product is a big help for anyone who has difficulties drawing with gel polish, working with this could make the decoration process stress-free because drawing is always easier than painting. This pen provides you the possibility of the constant line, so it would be gap free and the line wouldn't break at any point. This product can make the whole decoration process fun and joyful. Recommended usage: On the top of the fully cured top gel, matte the surface with a #180 file. We don't recommend to use this after a Matte Top Gel, but if you insist to use it anyway, the best you can do is work with a very fine movement and a massive material usage.



ACRYL PAINT RETARDER LIQUID

This colorless liquid can be mixed with a relatively fast-drying acryl paint to slow down the drying process. Drip it on the palette to your ink - the more you drip, the slower it will dry. The liquid makes the texture of the paint soft and creamy, so the edges of the flower petal will not be fibrous. A huge help in the heat!



ACRYL PAINT RETARDER LIQUID

This colorless liquid can be mixed with a relatively fast-drying acryl paint to slow down the drying process. Drip it on the palette to your ink - the more you drip, the slower it will dry. The liquid makes the texture of the paint soft and creamy, so the edges of the flower petal will not be fibrous. A huge help in the heat!



JAR SET

Decorative holder and display jar set.



MIXING JAR

In clear and white color



ROUND HOLDER FOR RHINESTONES



RHINESTONE HOLDER SQUARE

12 sections



RHINESTONE HOLDER SQUARE

7 sections



RHINESTONE HOLDER

28 pcs



Crystal
Nails®

ELECTRONICS

BY CRYSTAL NAILS



ELECTRONICS BY CRYSTAL NAILS

LEDEXTREME+ UVLED LAMP

A clean, lightweight UVLED lamp designed for every day salon work. High capacity and reliable, fast switching are not an issue. With its optimally placed high-performance UVLED bulbs and removable mirror panel at the bottom, all the materials can cure quickly and safely under the light. Thanks to the magnetic fixed, easily removable lower mirror panel, maintenance and pedicure are also possible. It makes the everyday salon work easier with a several practical functions: button and motion sensor control, 5 types of timers, "LOW HEAT MODE" and new "SLEEPING MODE" functions. This not only makes it an essential help at work, but also minimizes unnecessary energy consumption thanks to its new "SLEEPING MODE" function. For the uniqueness, you can easily enhance the atmosphere of your table with the help of a replaceable silicone top.

LOW HEAT MODE "- reduces the burning sensation during curing.

"SLEEPING MODE" - an automatic power saving function that takes effect after 30 minutes when the unit is not in use.

Features:

- Power: max. 48W
- UVLED: 33 pcs
- Control: touch buttons and motion sensor
- Timing: 10/30/60/90 sec and 120 sec.
- Light wavelength: 365+405nm
- Other extras: "LOW HEAT" and "SLEEPING" mode functions, button lighting.
- Accessories: charger

There is no blind sport, the light reaches the nail from all directions in a way that does not disturb the eye

NEW „SLEEPING MODE" energy saving function.

LOW HEAT MODE "- reduces the burning sensation during curing.

For professional usage

Motion sensors for turn in/off



LEDEXTREME MINI UVLED LAMP

Our latest device is our first UVLED lamp with a built-in fan function. The operation of the quiet fan cool down the UVLED bulbs, extending their service lifetime and it is a good help in the drying process of the air-drying materials. Make no mistake, our new lamp is a modified, improved version of our beloved LEDExtreme Party UVLED lamp. What's changed? It has been given a new snow white look and fan function. What's remained? Reliable performance, digital display, motion sensor function, timing, touch panel, inner mirror surface bottom panel and small, clean exterior. Thus, our latest little lamp has been enriched with even more useful features. It is designed for medium use. Feel free to try.

Features:

- Power: up to 36W
- UVLED Bulbs: 21pcs
- Wavelength: 365+405nm
- Control: Touch Panel / Motion Detector
- Timer: 10/30/60 sec
- Other Extras: Fan, digital display
- Accessories: charger



Fan, digital display

Motion detector function

There is no blind sport, the light reaches the nail from all directions in a way that does not disturb the eye



LEDEXPRESS+ UVLED LAMP

Easy to use, small sized, snow white, pearl colored UV/LED lamp with great power (36W), which could easily cures any kind of material. Semi-circular shape, open back, lamp with high performance 18 UV/LED bulbs. Optional with motion sensor or push button off and on. Perfect choice for beginners, students and professionals, too and you can use for pedi as well.

Specs:

- Power: 36W
- UV/LED bulbas: 18pcs
- Wavelength: 365+405nm
- Control: button, motion detector
- Timer: 30/60sec and 100sec
- Accessories: charger



XPRESS LED - 5 FINGER LAMP

Practical, small, it cures classic materials faster due to its super strong LEDs – It cures CrystaLac in 30-60 seconds. The head can be rotate by 180° and the angle can be changed as well. Thanks to the strong LED bulbs, you cure the nails faster.

Specs:

- Power: 6W
- UV/LED bulbs: 30pcs
- Control: button
- Timer: 30/60sec
- Other extras: 180 ° rotatable
- Accessories: charger



UFO UV LAMP HT1

This small, white, easy-to-use lamp may be the perfect choice for the beginners but the professionals are adore it as well. The perfect locations of the 2 short bulbs and the mirrors inside of it, makes the curing process fast and safe.

Specs:

- Power: 18W
- UV bulbs: 2pcs (short)
- Wavelength: 365nm
- Timer: 3min and timeless
- Extra: start button
- Accessories: 2pcs of 9W UV bulbs



CN advise:
Try it with UFO+
UVLED bulb



We gave to all of our UV lamps a bulb with special plastic holders and stronger cable-holders for the most professional result.

ELECTRONICS BY CRYSTAL NAILS

CRYSTAL UV LAMP H-M/2.2

PINK, BLACK, ECRU

Exclusive exterior, available in pink, ecru and black. It was developed for professionals and for all-day-long salon work. It can be easy to control, thanks for the digital control panel. The perfect locations of the bulbs and the mirrors inside of it, makes the curing process fast and safe. You can minimize the heat (and make faster the curing process for some material) with the optional fan function. The bottom of the product can be removed which can be a huge help for pedi, maintenance or changing the bulbs.

Specs:

- Power: 36W
- UV bulbs: 4pcs
- Wavelength: 365nm
- Control: button
- Timer: 3 min and continuous working
- Other extras: 180 ° rotatable
- Accessories: charger



For professional
usage

CN Advise:

Try it with
UV/LED bulb



UNIVERSAL UVLED BULB

Makes the curing process faster, easily can change, double wavelength. This lamp will cure all kinds of material fast and safe. You can use it with identical bulbs or you can mix the simple UV bulbs.

Find your best matches!

- Power: 9W
- LED bulbs: 12pcs
- Wavelength: 365+405nm
- Suitable: Crystal/Tube/Euro UV lamps



UVLED

UFO+ UVLED BULB

All of our UVLED bulbs has double wavelength (365+405), so using this all of our light-sensitive products can cure fast and safely. Use them combined with UV bulbs or 4 identical at the same time. You don't have to worry about which material will cure in under your lamp.

Specs:

- Power: 9W
- LED bulbs: 12 pcs
- Wavelength: 365+405nm
- Suitable: UFO Lamps



UVLED

CRYSTAL UV BULB - LONG

Long, replaceable 9W bulb for lamps with 4 or 1 bulbs.

Specs:

- Power: 9W
- Wavelength: 365nm
- Suitable for Crystal/Tube/Euro UV lamps



UV

UFO UV BULB - SHORT

Specs:

- Power: 9W
- Wavelength: 365nm
- Suitable: UFO UV lamp

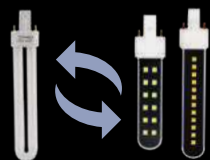


UV

All of our UVLED bulbs has double wavelength (365+405), so using this all of our light-sensitive products can cure fast and safely. Use them combined with UV bulbs or 4 identical at the same time. You don't have to worry about which material will cure in under your lamp

BULB-CHANGE GUIDE

UV/LED csőre cserélnéd a lámpád csőveit? Segítünk!



...you do mostly
gellac...

...you mostly
sculpting...

| | | | | |
|----|------------------------------------|-----------------------------------------------------------------------------------|-----------------|-----------------|
| If | you have Tunnel lamp... |  | 4 pcs UV/LED | 2 pcs UV/LED |
| | you have a Crystal UV Lamp.. |  | 4 pcs UV/LED | 2 pcs UV/LED |
| | if you have an euro lamp.. |  | 1 pcs UV/LED | 1 pcs UV/LED |
| | if you have an UFO lamp...* |  | 2 pcs UV/LED | 2 pcs UV/LED |

...of UVLED bulbs, you will need.

HOW CAN I CHANGE MY BULBS IN MY LAMPS TO LED/UVLED BULBS? (FOR 4 BULBS LAMPS)

Combined usage



Note: Option A recommended in case of LED bulbs. Option A and B both recommended in case of UVLED bulbs.

Single use - when using 4 identical tubes



Note: option C is NOT recommended in case of LED bulbs if you using material which are don't cure in LED light. Option C is recommended in case of UVLED bulbs.

DOESN'T RECOMMENDED USAGE - switched applications



Note: option E and F could cause malfunctions

LED
or
UV/LED
bulb

UV bulb



All of our UVLED bulbs has double wavelength (365+405), so using this all of our light-sensitive products can cure fast and safely. Use them combined with UV bulbs or 4 identical at the same time. You don't have to worry about which material will cure in under your lamp.

CHECKING THE BULBS

It's important that you check the effectiveness of your UV, LED, UVLED bulbs for the more efficient work.

WHY IS IT IMPORTANT?

If the the bulbs are weak or if you are working with a lowpowered lamp, mistakes can occur or the results won't be durable: CrystaLac won't cure properly, get matte or rip off. Gels nails might cure well, but the result won't be long-lasting.

HOW CAN I TEST IT?

Apply 1 layer of Cool Top Gel to the nail or tip. If the edges are sticky after 2 min curing, where the lights are not direct, then the bulbs are weak. Important: in case of everyday salonwork, the UV, LED, UVLED bulbs need to be changed approximately every 6 months.

WHAT SHOULD I KNOW ABOUT LED, UVLED BULBS/LAMPS?

Even if you working with combined lamps (that means you put LED or UVLED bulbs to the Crystal UV Lamp) or the newest LED/UVLED lamps, you should consider the following facts and take our advises.

- Some white or light material (CrystaLac, Color Gels, some Top Gels) could turn yellow after curing in LED or UVLED lamps. This phenomenon caused by a chemical reaction but after approximately 10 minutes it will disappear after the product has cooled down and you will get the required color.
- We recommend you to keep your jars in a safe distance from your lamp. If you have a lamp which has a back, you can keep it behind it, if you have a backless lamp, keep it next to it with some distance because the light could get through the wall of the jars and damage the material inside. So make sure that you have your gels out of the light what comes from your lamp.
- Some materials will not cure in the light of LED. These are: Builder Clear Gel 1, Pink Builder Hard Gel, Builder Pink 1, Builder Pink 2, Antifungal Pedi Gel, and some of the color gels: most of the 200, 500, 600; Supernova, Fly-Brill, Moonlight Gels.
- The Tiger Eye Gels, the 3 Step colors, the Water Pro and 1 Step CrystaLacs are love the LED light. That means they don't flow around;
- the pattern on the surface of the Tiger Eye which was made with magnet;
- the dropped color-pattern on WaterPro CrystaLac;
- The 1 Step and 3 Step colors demand the LED or UVLED light for curing because of their consistency and pigments.

IMPORTANT: Know your lamp's qualities! Experiment before you get to use them on your everyday salonwork. It's crucial in case of ChroMirror Pigment Powders, Transferfoil Gels and other thick non-cleansing decorating material. Try to avoid the under-curing which means that you don't keeping your nails inside the lamp enough time to cure the materials. In these cases the products could be slippery or they could fall off from the nail plate. Also, you have to avoid the over-curing, because they could break easily.

CN advise:

Never stop checking your lamp or the bulbs in your lamp (depends on the lamp's type)! The best method is when you test your lamp at the first time, observe how much time does it takes to cure your builder gel! Usually it supposed to take 10-15sec. This is not a full cure time, this is for to make the material to that consistency to not to move for the working process. We recommend you to test your products in a monthly basis and if the curing time reaches the 20-30sec the bulbs/product needs to be changed. **IMPORTANT:** the test should have taken with already warmed up bulbs.

CURING TIME IN UV, LED, UVLED LAMPS

BASE GELS AND TOP GELS**

| | UV Lamps and bulbs | LED Lamps and bulbs | UV/LED Lamps and bulbs |
|------------------------------------------|-----------------------|---------------------------|------------------------------|
| Base Gel | 2-3 min | 1-2 min | 1-2 min |
| Builder Base Gel | 2-3 min | 1-2 min | 1-2 min |
| Cool Top Gel Universal | 2-3 min | 1-2 min | 1-2 min |
| Xtreme Top Shine | 2-3 min | 1-2 min | 1-2 min |
| Top Seal | 2-3 min | 1-2 min | 1-2 min |
| ONE STEP CrystaLac 0* | 2-3 min | 1-2 min | 1-2 min |
| CrystaLac Clear/Top 0 | 2-3 min | 1-2 min | 1-2 min |
| Easy Off Top | 2-3 min | 1-2 min | 1-2 min |
| MattEver Matt Top Gel | 2-3 min | 1-2 min | 1-2 min |
| Cool Top 4 Dark | 2-3 min | 1-2 min | 1-2 min |
| Confetti Top Gel Matte black és white | 2-3 min | 1-2 min | 1-2 min |
| Aurora Top Gel | 2-3 min | 1-2 min | 1-2 min |
| Glam Top Gel / Rainbow Rose | 2-3 min | 1-2 min | 1-2 min |
| Milky Top Gel | 2-3 min | 1-2 min | 1-2 min |
| Sens Top Gel | 2-3 min | 1-2 min | 2-3 min |

SOAK-OFF GELS**

| | UV Lamps and bulbs | LED Lamps and bulbs | UV/LED Lamps and bulbs |
|------------------------------|-----------------------|---------------------------|------------------------------|
| Compact Base Gel PLUS | 2-3 min | 1-2 min | 1-2 min |
| Compact Base Gel | 2-3 min | 1-2 min | 1-2 min |
| Easy Off Hardener Gel | 2-3 min | 1-2 min | 1-2 min |
| 3 STEP CrystaLac | 2-3 min | 1-2 min | 1-2 min |
| ChroMe CrystaLac | 3-4 min | 3-4 min | 3-4 min |
| ChroMe Top* | 2-3 min | 1-2 min | 1-2 min |
| Tiger Eye CrystaLac | 2-3 min | 1-2 min | 1-2 min |
| Tiger Eye Infinity CrystaLac | 2-3 min | 1-2 min | 1-2 min |
| Angora CrystaLac | 2-3 min | 1-2 min | 1-2 min |
| Chromatic CrystaLac | 2-3 min | 1-2 min | 1-2 min |
| My Glow CrystaLac | 2-3 min | 1,5-2 min | 1,5-2 min |
| Glassy CrystaLac | 2-3 min | 1-2 min | 1-2 min |
| CoverPRO CrystaLac | 2-3 min | 1-2 min | 1-2 min |
| ONE STEP CrystaLac* | 2-3 min | 1-2 min | 1-2 min |
| Elasty Hardener Gel | 2-3 min | 1-2 min | 1-2 min |
| Sens Base Gel | 2-3 min | 1-2 min | 1-2 min |

COLOR GELS AND DECORATING GELS**

| | UV Lamps and bulbs | LED Lamps and bulbs | UV/LED Lamps and bulbs |
|---------------------|-----------------------|--------------------------------------------------------|------------------------------|
| Color Gel | 2-3-4 min | 1-2-3 min (Fly-Brill, Brilliant nem köt LED-ben) | 1-2-3 min |
| Royal Gel* | 2-3 min | 1-2 min | 1-2 min |
| Lace Gel | 2-3 min | 1-2 min | 1-2 min |
| Art Gel | 3-4 min | 2-3 min | 2-3 min |
| Art Gel PRO | 3-4 min | 2-3 min | 2-3 min |
| 3D Gel | 2-3 min | 1-2 min | 1-2 min |
| Stamping Color Gel | 2-3 min | 1-2 min | 1-2 min |
| RoyalCream | 2-3 min | 1-2 min | 1-2 min |
| Bubblegum Color Gel | 2-3 min | 1-2 min | 1-2 min |
| Desert Gel | 2-3 min | 1-2 min | 1-2 min |
| Ornament Gel | 2-3 min | 1-2 min | 1-2 min |
| Highlight Gel | 3-4 min | 2-3 min | 2-3 min |
| Sens Plasty Gel | 2-3 min | 1-2 min | 2-3 min |



Xtreme Fusion AcrylGel Rose quartz effect

The nail was made with the Xtreme Fusion AcrylGel Shimmer
Latte and the Rose quartz shade by Virág Halász.

* These materials will be shiny and hard after curing.

** All the cure times depends on the performance, frequency of usage of the UV, LED, UVLED lamps/bulbs and the using method of the material. Recommended to change the bulbs every 6 months in case of everyday salon work.

CURING TIME IN UV, LED, UVLED LAMPS

BUILDER GELS

| | UV Lamps and bulbs | LED Lamps and bulbs | UVLED Lamps and bulbs |
|-------------------------------------------------------|-----------------------|------------------------|--------------------------|
| Gelly Cover Pink Gel | 2-3 min | 1-2 min | 1-2 min |
| Cool Gel | 2-3 min | 1-2 min | 1-2 min |
| Cool (Remove) Clear | 2-3 min | 1-2 min | 1-2 min |
| Titanium Gel | 2-3 min | 1-2 min | 1-2 min |
| Xtreme Clear | 2-3 min | 1-2 min | 1-2 min |
| Gumi zselé | 2-3 min | 1-2 min | 1-2 min |
| Builder Clear I. | 2-3 min | - | 1-2 min |
| Builder Clear II. | 2-3 min | 1-2 min | 1-2 min |
| Xtreme Superior Cover Pink Builder Gel | 2-3 min | 1-2 min | 1-2 min |
| Xtreme Cover Pink | 2-3 min | 1-2 min | 1-2 min |
| Cover Pink | 2-3 min | 1-2 min | 1-2 min |
| Rocky Cover LightGel | 2-3 min | 1-2 min | 1-2 min |
| Cover Refill Gel | 2-3 min | 1-2 min | 1-2 min |
| Cover Refill Hard Gel | 2-3 min | 1-2 min | 1-2 min |
| Cover Refill Hard Tan Gel | 2-3 min | 1-2 min | 1-2 min |
| Cover Refill Hard Crystal Gel | 3-4 min | 2-3 min | 2-3 min |
| Xtreme White | 3-4 min | 2-3 min | 2-3 min |
| Builder White II. | 3-4 min | 2-3 min | 2-3 min |
| BabyBoomer-White Gel | 2-3 min | 1-2 min | 1-2 min |
| Xtreme Pink | 2-3 min | 1-2 min | 1-2 min |
| Builder Pink II. | 2-3 min | - | 1-2 min |
| Antifungal Pedi Gel | 2-3 min | 1-2 min | 1-2 min |
| Xtreme Superior Builder Gel | 2-3 min | 1-2 min | 1-2 min |
| BabyBoomer 2 | 2-3 min | 1-2 min | 1-2 min |
| Flexi French Gel | 2-3 min | 1-2 min | 1-2 min |
| Xtreme Pudding+ Builder Gel | 2-3 min | 1-2 min | 1-2 min |
| Babyboomer Crystal (Jégkristály) White Builder Gel | 2-3 min | 1-2 min | 1-2 min |

| | LED LAMPS AND BULBS | UV/LED Lamps and bulbs |
|---------------------------------------------|------------------------|---------------------------|
| Xtreme Fusion AcrylGel Shimmer Latte* | 1-2 min | 2-3 min |
| Xtreme Fusion AcrylGel Clear* | 1-2 min | 2-3 min |
| Xtreme Fusion AcrylGel Cover Pink* | 1-2 min | 2-3 min |
| Xtreme Fusion AcrylGel Transparent Pink* | 1-2 min | 2-3 min |
| Xtreme Fusion AcrylGel White* | 1-2 min | 2-3 min |
| Xtreme Fusion AcrylGel Extra White* | 2-3 min | 4-5 min |
| Xtreme Fusion AcrylGel Mermaid Latte | 1-2 min | 2-3 min |
| Xtreme Fusion AcrylGel Rose Quartz | 1-2 min | 2-3 min |

*In case of UV lamp the curing time take 4-5 min



ONE STEP CrystaLacs
in deep shades

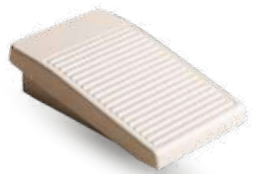
The nail was made with the 1S110, 1S111 and 1S112 ONE
STEP CrystaLacs by Edina Sikari.

XTREME DRILL 3

This precise, premium dentist-tech quality machine developed specifically for every day salon work. Very quiet, vibration free and doesn't warm up easily. The dust could hardly get into the handpiece, thanks to the design and development of the product. The transition between the RPM stages is very smooth, almost unnoticeable and you can change the direction of the rotation (reverse/forward). You can change the drill bits with one firm move.

Specs:

- RPM: max 30000 RPM
- Rotation setting: yes
- Drill bit holder: 18 pcs
- Foot panel: no (it can be purchased separately)
- Accessories: handpiece holder, handpiece key



PEDAL

The pedal is also available separately



X1

This little white, clean-designed machine could be the perfect choice for occasional use or beginners. It has a low vibration, it can perform on an average standard level, also you can change the rotation reverse and forward.

Specs:

- RPM: max 15000
- Rotation setting: yes
- Accessories: table
- handpiece holder



ELECTRONICS BY CRYSTAL NAILS

NEW! TRAVEL EXTRA NAIL DRILL MACHINE

IT HAS 2 METALLIC COLOR: SILVER AND PINK.

It doesn't just small but smart as well. Due to its unique design the work with this product is not just comfortable, but effective too. It is perfect for removing CrystalLacs, for manicure and pedicure and for small corrections as well. We gave a multifunctioning controller to the adapter and it made the product more easy to handle. The transition between the RPM phases is very smooth, almost unnoticeable. You can change directions of the rotations (reverse/forward) and it is very easy to change the drill bits you need only one firm move for that (it has a chuck). It also has a control panel with a LED light. Due to its compact size, you can carry it anywhere with you. It was developed for medium level of working.

SPECS:

- RPM: max. 20 000 RPM
- Power: max. 24W
- Chuck: yes
- Rotation settings: yes
- Speed setting: yes
- On/Off switch: yes
- Other extras: control panel with LED light, sleep mode, 3 spot terminal for the power supply.
- Accessories: charge cable, hand piece holder, drill bit kit



TRAVEL DRILL

We developed this very light and small e-file for occasional use, especially for quick corrections, travel and practice.

Specs:

- RPM: max 15000
- Rotation setting: no
- Drill bit holder: no
- Foot panel: no
- Accessories: drill bit kit, charger



CARBID BITS

CARBIDE EXTRA-FINE

Fine surfaced Carbide Strong drill bit. Although it has a fine surface, you can still remove a large amount of material with it thanks to the convex-shaped sides. Since it's fine notched, you will never experience any material damage. This bit has a narrowing body and a rounded end, so it does not hurt the skin. It is recommended for modern gel polish refilling or removing aerations in artificial nails, for those who don't know how to use stronger bits properly. Thanks to the deep developed grooves of the bit, even left or right-handed technicians can use this product easily. The cooling of the bit is perfect so it does not heat up if you use it properly.

LEFT AND
RIGHT
HANDED



NEW! CARBIDE CONE - MEDIUM

Medium-strength, cone-shaped drill bit. Developed for making straight-sided surfaces. This bit has a narrowing body and a rounded end, so it does not hurt the skin and completely resonates with it. Allowed to use it on all three substances and in modern gel polish fillings too. Thanks to the deep grooves of the bit, you can use it easily even if you are left or right-handed. The cooling of the bit is perfect so it does not heat up if you use it properly.

LEFT AND
RIGHT
HANDED



EASY REFILL CARBIDE DRILL BIT

Developed for equalize the level during the buliding or filling process with gel and acrylic products, near the lateral nail fold. Also, this bit is perfect for removing a strenghtened gel polish with bits. Thanks for the special developed grooves of the bit, be left or right handed, you can use this product easily.

LEFT AND
RIGHT
HANDED



SURFACE REFINER BIT

Big, parallel, round shaped top. This product can create a very fine surface and it doesn't harm the skin.



BIG CONE L SOFT DRILL BIT

Cone shaped, big sized drill bit. The blunt top makes the useage more safer. Leghtwise grooves. For gel and acrylic product.



BIG CONE

For preparing manicure and pedicure and artificial nails.



SMALL CONE

Preparing the pedicure and manicure. Lozenge grooves



XTREME BITS WITH TITANIUM COAT

SMALL DRILL BIT - CONE

Developed for cleaning the cuticle and remove the dead skin from the nail. The special blunt edge cannot make any injury, using in a horizontal position, the lowest RPM possible. For advanced professionals only!



MEDIUM DRILL BIT - CONE

Medium, thinner bit. This is the strongest bit in our repertoire. Developed fast, painless gel and acrylic product removal. Recommended for right handed people because of the direction of the grooves.



LARGE DRILL BIT - CONE

Big, cone shaped drill bit. This is the most popular and extra strong drill bit. Developed for fast, painless gel and acrylic product removal. Be left or right handed, this product is for everyone. It won't heaten up. For advanced professional use only.



LEFT AND RIGHT
HANDED

ELECTRONICS BY CRYSTAL NAILS

DIAMOND POWDER BITS FOR MANICURE

DEEP CLEAN DRILL BIT 1.

BIG SIZE, MEDIUM STRENGTH

Lance shaped, deep cleaning big/medium strenght drill bit with diamond coat. After the cuticle was cut off, this bit can clean deeper the cuticle and remove the remaining skin pieces. In case of small nails we can use it for lift the skin as well.



DEEP CLEAN DRILL BIT 2. /

OLD NAME: MINI POINTY CYLINDER BIT

Cone shaped deep cleaning medium sized, strong drill bit with diamond coat. After the skin was cut we can clean deeper the cuticle area and remove the remaining dry skin pieces in case of big amount and hardly lifted skin.



DEEP CLEAN DRILL BIT 3

Lance shaped, deep cleaning small, medium strenght drill bit with medium strenght diamond dust coat. After the skin was cut off, it can clean the cuticle area at the deepest level. It can remove the remaining small amount of dry skin pieces in case of normal depth rising skin.



DEEP CLEAN DRILL BIT 4.

Lance shaped, deep cleaning mini sized medium strenght drill bit with medium strenght diamond dust coat. After the skin was cut it can clean the cuticle area at the deepest level. It can remove the deepest tiniest dry skin pieces.



REFINE DRILL BIT

Barrel shaped big sized drill bit for the skin with fine diamond dust coat. After the skin was cut off we can smoothen the skin with this bit.



EASY CUT DRILL BIT 2.

DRILL BIT FOR THE SKIN MEDIUM STRENGTH AND SIZE

Cone shaped medium drill bit for the skin with diamond dust coat. Developed for removing the already lifted medium amount of skin and removing the hard skin from the cross area between the proximal and the lateral nail fold.



JOKER MANICURE BIT - CONE

Cone shaped, multifunctional drill bit. Big, medium strong in a diamond dust coat. We can use this bit in several stage of our work: lifting cuticle, preparing the natural nail, thicker skin. The rounded top will protect your customer from injuries. The long, cone shape assures the safe and effective work on the cuticle.



LIFT-UP BIT 1.

CUTICLE LIFTING DRILL BIT - BIG, STRONG

Lance shaped, cuticle lifting drill bit. Big and strong bit with a diamond dust coat, which is perfect for lifting a big amount of skin from the nail in the cuticle area; also good for the cleaning of the cross area between the proximal and the lateral nail fold.



LIFT-UP BIT 2.

CUTICLE LIFT-UP BIT - MEDIUM, STRONG

Lance shaped, cuticle lifting medium drill bit with diamond dust coat, which is perfect for lifting a medium amount of skin from the nail in the cuticle area. Also good for the cleaning of the cross area between the proximal and the lateral nail fold.



LIFT-UP BIT 3.

OLD NAME: LENGHTENED CONE BIT

Lance shaped, cuticle lifting big drill bit with diamond dust coat, which is perfect for lifting a small amount of skin from the nail in the cuticle area. Also good for the cleaning of the cross area between the proximal and the lateral nail fold.



EASY CUT DRILL BIT 1.

DRILL BIT FOR THE SKIN STRONG/BIG

Barrel shaped, big drill bit for the skin with diamond dust coat. Developed for removing the already lifted big amount of skin and removing the hard skin from the cross area between the proximal and the lateral nail fold.



DRY PEDICURE WITH E-FILES DRILL BITS - EFFECTIVE TOOLS SPHERE SMALL AND BIG



CERAMIC DRILL BITS

CERAMIC REMOVE DRILL BIT - CONE

The most popular cone shaped drill bit. With this bit, the gel and acrylic product removing process will be faster. The product will not warming up.



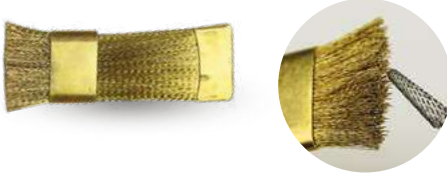
CERAMIC SURFACE SOFT DRILL BIT - CYLINDER

Big, parallel, rounded top, strong drill bit. Developed for gel and acrylic product remove in filling technique. Because of the rounded shaped top, it won't harm the skin. This drill bit won't warming up.



DRILL BIT CLEANING BRUSH

Changeable copper drill bit cleaning brush for carbide, diamond, ceramic bits.
6*2*0,37cm



DRILL BIT CLEANING BIT

Strong bristle mini cleaning bit. It can clean the bits easily and you can use it for cleaning the lateral nail fold.



PEDICURE DIAMOND BIT KIT



DRILL BIT RINGS - 3 LEVEL

Disposable, strong and durable texture, for removing and shaping gel and acrylic product. Fine, average and strong level.



DRILL BIT RING HOLDER



DRY MANICURE DRILL BIT KIT FOR DRY MANICURE

This is the newest kit. Making the preparation with this kit could be slowing down the regrowing process.

The purposes of the bits:

1. Classic fine-buffing bit: cleaning the small cracks nad fine-buffing the skin
2. Small sphere: Deeper cleaning
3. Big sphere: removing the thicker and hard skin
4. Cylinder: the already done checking cleaning
5. Thin cylinder: removing the cuticle and the skin from the nail plate
6. Pointy Cylinder: cleaning the lateral nail fold



RHINESTONE REMOVING BIT

With this bit, you can easily remove the stones from the nail. You can use this on the whole surface without harming the skin.



ELECTRONICS BY CRYSTAL NAILS

ATTRACTIVE DUST COLLECTOR 2. 3.

Great performance, developed for 2 hands, clean design.
White faux-leather cover, alloy-steel protective bars.
Accessories: Dust bag - 2pcs



For professional usage



CRYSTAL DUST - DOUBLE STRONG DUST EXTRACTION HANDREST

UNIQUE CRYSTAL NAILS DESIGN

Multiple power of suction combined with a unique, girly look. Renewed one handed, thinner design, unique protective bars and easy handling make it even more attractive. With the smaller collecting area, the efficiency and the safety with the new protective bars has increased. Thanks to the thinner, one handed design, it becomes even more practical to place on the table. It removes dust even from the air around your workstation. Makes the salon work high efficient, and providing even cleaner working conditions. With a clean, soft, padded textile leather exterior, comfort is not negligible either. We continue to provide a 3-year warranty. Accessories: 1 dust bag, power adapter.



For professional usage



CRYSTAL DUST - DESKTOP VACUUM CLEANERS

WITH LACQUER AND SKIN SURFACE

Multiple suction power combined with a practical, built-in, clean design. Renewed unique protective grille and easy operation, which makes them even more attractive. With their smaller collecting area and with the new protective bars the extraction efficiency and the safety has been increased. Thanks to their built-in design, they do not take up unnecessary space on the table and can be placed directly under the hand. The floating dust, generated during the salon work is removed with the high efficiency of this product, which providing even cleaner working conditions. With the thick-wall and washable dustbag with a special filter in it, efficiency is not lost. And for uniqueness, you can choose from two surfaces: glossy lacquer and soft leather.

We continue to provide a 3-year warranty.

Accessories: 1 dust bag, 1 power adapter.

Built-in sheet size: 290 * 170 * 6mm



For professional usage



ATTRACTIVE DUST BAG

Developed for the Attractive just Collector, it can be washed.



XTREME STRONG DUST BAG

Developed for the Xtreme strong Dust Collector. Rubber banded top can help you with the smoot happy to the machine.



CRYSTAL DUST THICK-WALLED BAGS

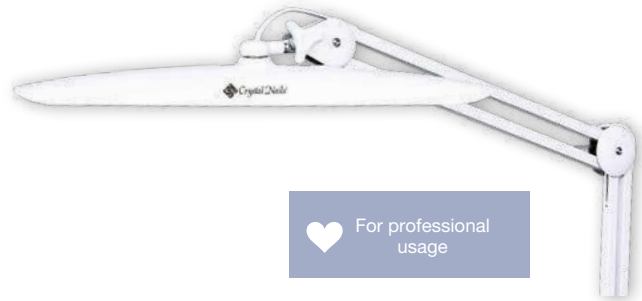
(available also separately)



GIGALED - TABLE LED LAMP

GIGALED TABLE LAMP DESK LAMP

Adjustable brightness - 25%, 50%, 75%, 100% light intensity settings - 24W lamp, thanks to a wide headlight it illuminates the whole work surface. „Power Memory function (when power is switched off, the previously set brightness switches back on again). The head of the lamp can be twisted in 360 degrees laterally and in 180 degrees up and down. The neck can be twisted in 180 degrees. Can be attached to a table.



SMART LAMP LED TABLE LAMP

Smart lamp. Characteristics:

- LED light source - can be warm / cool color temperature (2700K, 5300)
- Six gradual brightness control (3 hot and 3 cold)
- Three point bend fixture
- hinge, positioned head

Accessories: adapter and mounting panel (for table top mounting)



TABLE LED LAMP - FOR LIGHTING

Narrow design, flexible at the neck, modern design. Light the whole table evenly. You can fix it to the table, so it will stay steady. It does not cure the gel! Energy saving LED technology.



XPRESS LIGHT MAGNIFYING DESK LED LAMP PERFECT FOR STAND

Adjustable on three points, lightweight frame, snow white colored, magnifying desk lamp with bright LED lighting. Pivoting positioned head which can turn up and down in 180 degrees and rotate side to side in 360 degrees. With touch brightness controller: increase or decrease the brightness with pressing the switch longer. The lamp magnifies the things three times bigger, not distort.



SUPER BRIGHTNESS -

SUPER BRIGHTNESS MAGNIFYING LED LAMP

Our favorite magnifying lamp has finally been renewed after a long time. It has a built-in 18 pcs SMDLED lighting panel and a removable power adapter, making it more energy efficient. Its practical size and flexibly adjustable design, as well as its reduced-distortion 3D magnifying lens. Thus, even with a more modern interior, it remains an excellent helper during meticulous, detailed work. Accessory: adapter.



ELECTRONICS BY CRYSTAL NAILS

XTREMEPRO ULTRASONIC CLEANER

If you want your metal tools as clean as new, you can stop looking! With this product, the cleaning process will be more comfortable, practical and fast. We developed these machines to make easier your everyday salonwork: you can clean several tools at once. The design is practice, simple and clean. The container itself made of stainless steel. The program will lasts 5 minutes, and you can actually see the difference after.

HOW IT WORKS?

Fill up the container with liquid or water and the ultrasonic waves willvibrate the tools and the liquid itself, and these will loosen up the stubborn contamination from the tools and it will remove the lighter contaminations easily. We recommend to us this machine for products what are waterproof and unscratched.

♥ Container
Capacity: max
450ml
Timer: max 5
minutes

♥ Performance:
max. 15W
In 2 awesome
color White /
Sweet pink

White

Sweet
Pink

PRO-WAX 100 PARAFFIN HEATER

Compact wax heater machine with several stages.



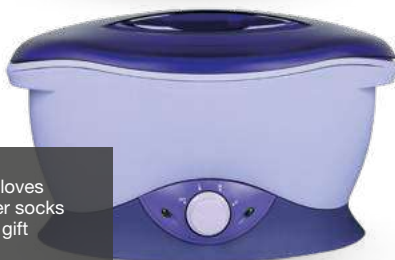
DIGITAL PINK PARAFFIN MACHINE

Digital adjustable temperature 2,5 litre paraffin machine. We can adapt the temperature required by our clients.



PURPLE PARAFFIN MACHINE

Modern design and color (purplepink), 3 stages



With gloves
and finger socks
as a gift

PARAFFINS

6 intense scents: jasmine, peach, tea tree, orange, levander, rose. 450g



ACCESSORIES



ACCESSORIES

AURORA BAGS

Are you fan of the fabulous Aurora ChroMirror? Are you staring your nails if they're made of these products? From now on, the effect of our favorite chrome powder can be found on our small bags. Use it for carrying your favorite manicure and nail art tools.

Sizes:
10*10*13cm (Big);
4*8*13cm (Small)



COLOR MIXING SHEET

Let's paint! The surface of the new white, matte laminated sheet is for the colors to be mixed for painting, You can see the smeared colors more clearly on it. Its 15x10 cm waterproof, homogeneous surface will be a great help when painting with gel polish and for Art Gel patterns as well.



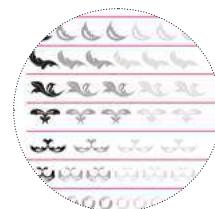
CRYSTALMASK BLACK WITH WHITE LOGO

2-layer washable, ironable Crystal Nails face mask with rubberized string at the ear. For hygienic reasons before first use it is recommended to wash and iron at high temperature.



NEW! PRACTICE SHEETS FOR NAIL DECORATION (ORNAMENT PATTERNS)

Practice booklet which contains seven pages with the most trendy inda decorations. The pages are wrapped in mat foil making them easy to clean therefore you can re-use them and perfect your technique. They assist you while you use indazselék (Ornament Gel) . A5 Size.



The patterns on the practice sheets were designed by Mész Alexandra.

BLACK&WHITE APRON

New, stylish Crystal Nails apron in black and white color with white Crystal Nails logo.



BLACK&PINK APRON

Pink – black Crystal Nails apron with the ordinary Crystal Nails quality and design. New, very stylish formation with pink logo.



HONEYSUCKLE APRON

The original Crystal Nails quality and design. In a popular honeysuckle color with a white Crystal Nails logo.



APRON WITH RHINESTONE LOGO

Due to its impregnated (water resistant) material, it protects the clothes underneath.



NEW! SENS APRON GOLD & BLACK

The new water repellent apron with the gold logo has a modern fit, making each nail artist look even more stylish!



NEW!

Front

CN PILLOW



MINI FAUX-LEATHER HAND HOLDER

Holder with Crystal Nails logo in pink and white colors.



FAUX-LEATHER HAND HOLDER



Back

ACCESSORIES

MINI FAUX-LEATHER HAND HOLDER

Holder with Crystal Nails logo.



CN TERRY CLOTH TOWEL

100% cotton.



CN TERRY CLOTH TOWEL

100% cotton.



TERRY CLOTH GLOVES



CN TOWEL - WITH MOLDING

50*100cm



PREMIUM DUST BRUSH

Its compact, thick head removes the dust completely after filing. Gentle to the skin so it gives the client a pleasant feeling. Its ergonomic design makes it an easy-touse hand tool and allows four fingers to be dusted at the same time.



TERRY CLOTH SOCKS



DUST BRUSH

Pink, with holder



DUST BRUSH WITH HOLDER



HALF MOON DUST BRUSH



DUST BRUSH - MINI



MAGIC BRUSH DUST BRUSH

Double-sided nail brush that attracts dust, so the nail bed and its surroundings can be completely dusted. Its surface looks rough, but touching is fine, like a gentle massage. To remove nail powder (gel, acryl, AcrylGel) dust this brush is the most effective. The dust does not sit between the fibers, easy to clean with soapy water and disinfectant alcohol or with disinfectant spray.



DUST REMOVE SPRAY 600ML



SAFETY GLASSES



MIXING PALETTE

Lockable, practical mixing palette with 12 separate metal washers. You can easily store and deliver the paints which you do not need every day after painting of a throw unused amount. The metal pads are magnetic, such disassembly and individually cleaned with ease. With Crystal Nails logo.



TOOL SANITIZER BOX



MANICURE BOWL



METAL PLATES FOR MIXING PALETTES

10 pcs/pack



FINGER PROTECTING TAPE



LONG COLOR PALETTE

You can display your colors to the client, so she can choose according to her preference. Available in transparent and white.



FAN PALETTE

The colors are easily changeable, you can try them on the client's finger. 23 pcs / display



ACCESSORIES

WHITE COLOR DISPLAY WITH METAL RING 50PCS/PACKAGE



CLEAR COLOR DISPLAY WITH METAL RING 50PCS/PACKAGE



BLACK COLOR DISPLAY WITH METAL RING, 50 PCS/PACKAGE

The black version of our 50 pcs display tips. Its advantage is that the nail technician do not have to paint the tips black prior to painting the designs. Makes the practice and presentation of some decorating techniques easier and faster. It's really easy to hold the tips by their handle and the practical metal ring keeps the finished tips together.



METAL MIXING PALETTE

Its uniform surface makes it possible to mix several materials simultaneously (e.g. pigment powders with light gels, beads, etc.). Thanks to its metal surface, it is extremely easy and quick to clean. Size: 14,8x10 cm.



NUDE MOPS TIP ON METAL RING

50 PCS/PACKAGE

Natural mops tip which easy to handle. It has a practical metal ring which bring together the tips.



OVAL DISPLAYS

In transparent or white color, oval.



FAN TIP DISPLAY

120 PCS, NATURAL AND CLEAR

Capacity: 120 pcs tips



CRYSTAL NAILS COLOR DISPLAY RING

Practical ring to display the color better. Just click it on the silver bottle. It makes the choice easier to your client and you can find the colors easier too. 50pcs



RING MIXING PALETTE

Product for mixing colors. Finger-lockable, easy to use for mixing in parallel with staining.



PRACTICING HAND

Life-like practical hands with a flexible holder. Rubber, vivid skin color, movable fingers. Can be fixed on a table.



PRACTICING HAND

Life-like practical hands with a flexible holder. Rubber, vivid skin color, movable fingers. With holding pad.



PRACTICING FINGER

1. plug in tip
2. sticky tip



AQUAINK HOLDER

Stable, black with a Crystal Nails Logo in it. Silicone.



MAGNETIC TIP DISPLAY (5PCS)

It works as a stand when making tips or the table can be decorated with the most successful works.



MAGNETIC TIP DISPLAY (WHITE 5PCS)

White console for Magnetic Tip Display to match the color scheme of the decorative tips.



DRILL MACHINE HEAD HOLDER

It is designed to hold 16 pieces of head, which makes it easy to transport and to store them on table and to disinfect them simultaneously.



PUMP DISPENSER JAR

You can store cleanser or polish remover in it, so it is easier to use. 120ml.



TIPFIX PLASTICINE GLUE

Pre-cut fasteners for attaching decorative tips to displays. There are 78 small cubes in one package. Multiple reusable, durable, temporary glue that thanks to its quality material keeps its shape even after UV / LED lightning. 50g

POLYGON JAR



GLASS JAR WITH GLASS TOP



ACRYLIC JAR for liquidid, lockable



ACCESSORIES

CRYSTAL DEMO PLATE OVAL, SQUARE

Prepare your favourite tips because the Crystal Demo Plates has arrived! Apply your decorated tips on it easily and you're ready to make some pics for any social media or even if you just show them in person to your customers! The Crystal Demo Plate is the perfect way for you to organize your tips and most importantly, you can make easier to choose for your customers. The size of the Oval Demo Plate is usually 9cm diameter (the size of the pieces of this shape can be different from each other).



Square



Oval

1. PIPETTE

For Acryl Remover and liquid



2. ORANGE TREE WAND



3. STRASS PICKER-UP PENCIL



4. STRASS PICKER-UP AND REMOVER WAX PEN - IN A PRACTICAL CASE



SILICONE TIPTAPE

Silicone Tape for nail art tips. Double sided tape, reusable. The length is 1 meter, the thickness is 1mm. This is the perfect choice for display books and our new Crystal Demo Plate. CN advise: If the tape what you using has lost of the stickiness you only have to do is wipe it or wash it and it will be good as new!



APPOINTMENT CARD

Elegant card on which you can write the date your clients next appointment along with other helpful notes



TABLE COVER 50 PCS

A3 size (29,7x42 cm), with Crystal Nails logo. Perfect background for reveal shots or tutorials and marketing videos.

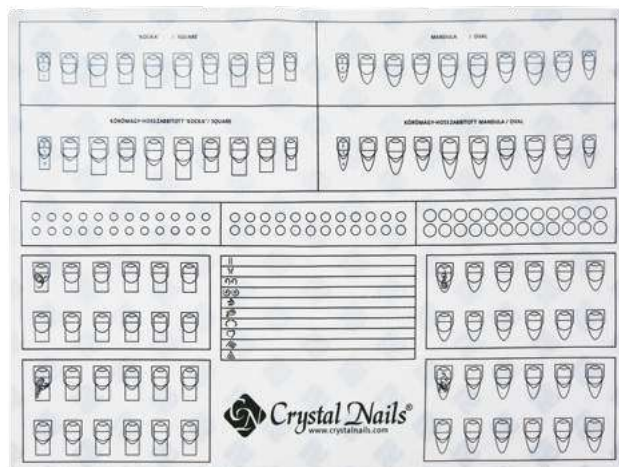
CRYSTAL NAILS COPYBOOK

Whatever comes to your mind, you do not have to use paper or postits. Beautiful, stylish bookie with nail photos of our Champions. It has 100 pages. One side of it is square lattice and the other side is smooth.



CRYSTAL NAILS SILICONE PRACTICE PAD

Two sided Silicone practice pad that is suitable for practicing sculpting, perfecting your lines and handmade patterns. Made with unique graphics. Easy to clean and also protects the table from getting dirty. Remove the uncured gel with a cleanser pad or fiber free towels saturated with cleanser. The cleaning is suggested with soapy warm water on the silicone part. Size: 30x40 cm



Crystal
Nails®

HAND AND FOOT CREAMS



HAND AND FOOT CREAMS

MOISTURISING HAND, FOOT AND BODY LOTION KRÉMEK

Our newest rich lotion product line contains shea butter. the oil level is more high, the absorption is slower and because of that, the skin care quality is more effective.

1. APRICOT LOTION - RICH

Contains: shea butter, jojoba oil, cocoa oil, vitamins with a scent of peach

2. RASPBERRY LOTION - RICH

Contains: shea butter, jojoba oil, cocoa oil, vitamins with a scent of raspberry

3. PAPAYA LOTION - RICH

Contains: shea butter, jojoba oil, cocoa oil, vitamins with a scent of papaya.

4. GRAPEFRUIT LOTION - RICH

Contains: shea butter, jojoba oil, cocoa butter, vitamins with a scent of a grapefruit.



New:

The 30 ml pack is now available in a practical, pumped package, so you can easily extract the cream from it to the last drop.

5. STRAWBERRY LOTION - RICH

Contains: shea butter, cocoa butter and vitamins with a scent of strawberry.

6. VANILLA LOTION - RICH

Contains: shea butter, cocoa butter and vitamins with a scent of vanilla.





Crystal
Nails® 

With the charm of eternal renewal

**We wish you a lot of success and many demanding
guests to work with Crystal Nails!**

www.crystalnails.com

Crystal
Nails[®] 

sens

by  *Crystal Nails*[®]